



NOTICE TO MARINERS

382 (T) of 2023

Issued by Cairns Maritime Region on 22 August 2023

Area: Karumba pilotage area
Locality: Karumba Channel – Elbow Bank
Activity: Channel extents and aids to navigation

Mariners are advised that:

The Karumba channel at Elbow Bank has been altered after the completion of dredging operations. The port and starboard extents of the channel at Elbow Bank are below.

Point	Latitude	Longitude
RC01(P)	17° 26.3024'S	140° 44.5905'E
RC01(S)	17° 26.3280'S	140° 44.5686'E
RC02(P)	17° 26.5630'S	140° 44.8214'E
RC02(S)	17° 26.5885'S	140° 44.7995'E
RC03(P)	17° 26.6579'S	140° 44.9994'E
RC03(S)	17° 26.6900'S	140° 44.9898'E
RC03(P)Int	17° 26.6709'S	140° 45.2602'E
RC03(S)Int	17° 26.7034'S	140° 45.2584'E
RC04(P)	17° 26.6709'S	140° 45.3458'E
RC04(S)	17° 26.7125'S	140° 45.3542'E

To aid mariners navigate the shoaling in the Karumba channel the following aid to navigation changes have occurred:

Six special mark buoys in the below approximate positions have been permanently withdrawn.

Navigation Aid	Latitude	Longitude
EB1	17° 26.703' S	140° 44.943' E
EB2	17° 26.602' S,	140° 44.900' E
EB3	17° 26.719' S	140° 45.079' E
EB4	17° 26.646' S	140° 45.073' E
EB5	17° 26.723' S	140° 45.170' E
EB6	17° 26.658' S	140° 45.167' E

Beacon #8 in approximate position latitude 17°26.361'S, longitude 140° 44.730'E has been altered and is now a special mark, light characteristics Fl Y 4.3s.

Beacon #7 in approximate position latitude 17° 26.413'S, longitude 140° 44.703'E has been altered and is now a port mark, light characteristics Fl R 4s.

The following aids to navigation have been established in approximate positions:

Navigation Aid	Latitude	Longitude	Light Characteristics
EB1 - Green Starboard Lateral Buoy	17° 26.472'S	140° 44.663'E	Fl G 4s
EB2 - Red Port Lateral Buoy	17° 26.580'S	140° 44.867'E	Fl R 4s
EB3 - Green Starboard Lateral Buoy	17° 26.656'S	140° 44.838'E	Fl G 4s
EB4 - Red Port Lateral Buoy	17° 26.635'S	140° 44.955'E	Fl R 4s
EB5 - Green Starboard Lateral Buoy	17° 26.709'S	140° 44.941'E	Fl G 4s
EB6 - Red Port Lateral Buoy	17° 26.657'S	140° 45.158'E	Fl R 4s
EB7 - Green Starboard Lateral Buoy	17° 26.722'S	140° 45.160'E	Fl G 4s

Mariners can refer to the attached Map S11-655-1.

Mariners are to navigate with caution.

Refer to notice: 304(T) of 2023

Cancel notice: 304(T) of 2023

AUS charts affected: 6

Latitude and longitude positions are on WGS84 horizontal datum and are compatible with GDA2020 datum.

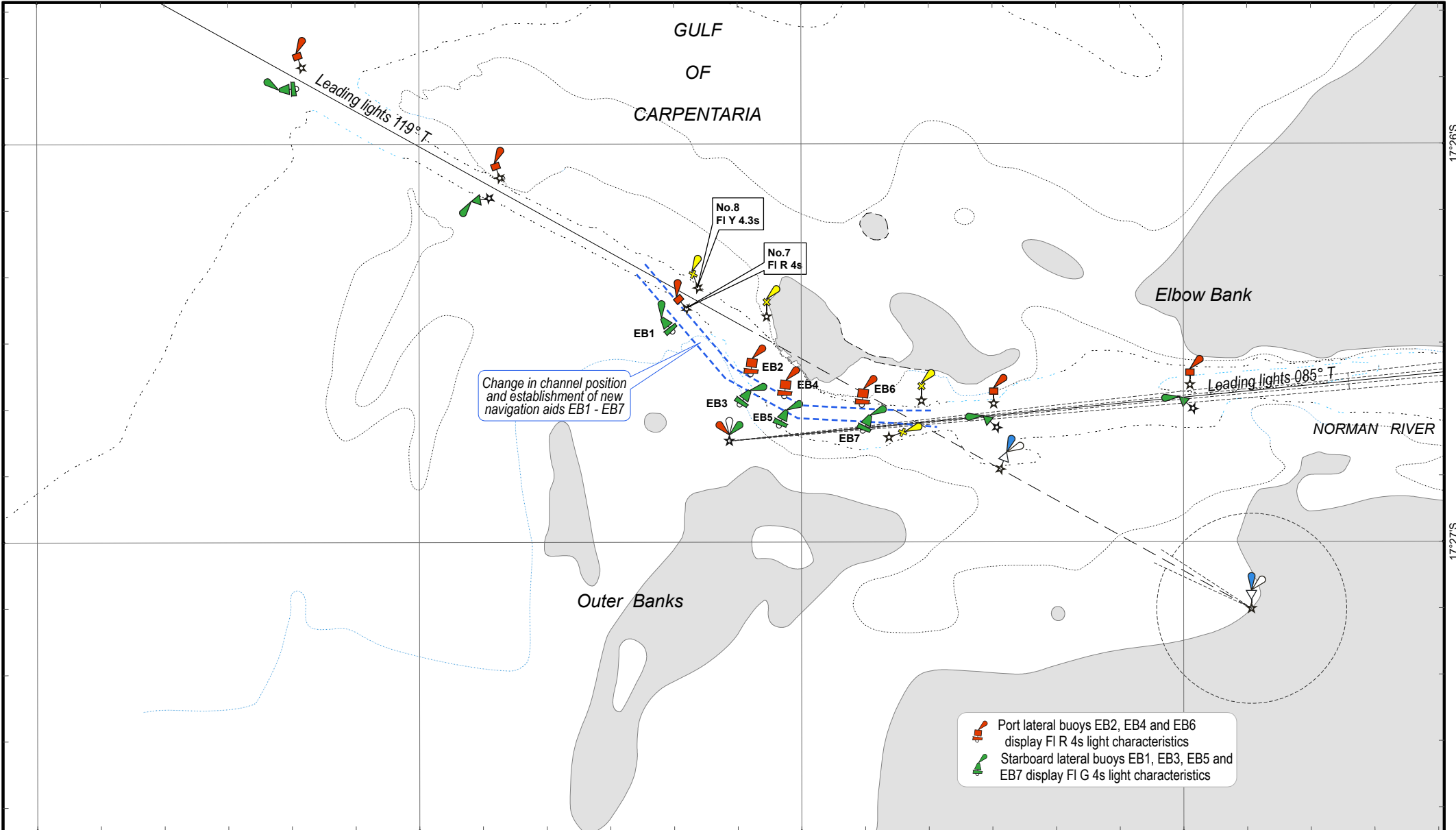
For further information about this notice, please contact:

The Cairns Regional Harbour Master's office:



Phone 07 4052 7400

Email: vtscairns@msq.qld.gov.au

Notice authorised by: Regional Harbour Master (Cairns) - Maritime Safety Queensland



Change in channel position and establishment of new navigation aids EB1 - EB7

 Port lateral buoys EB2, EB4 and EB6 display FI R 4s light characteristics
 Starboard lateral buoys EB1, EB3, EB5 and EB7 display FI G 4s light characteristics

To be used with appropriate NTM
 © The State of Queensland 2023
 Transport and Main Roads



Prepared 21 August 2023
 Maritime Safety Queensland
 Spatial Services

QUEENSLAND NOTICE TO MARINERS

Issued by Maritime Safety Queensland

KARUMBA CHANNEL - ELBOW BANK

Change in channel and new navigation aids

QNTM updates also available from www.msq.qld.gov.au
 Datum: GDA2020 horizontal. LAT vertical
 Map projection: UTM (MGA zone 54)

Map S11-655-1

