

# NOTICE TO MARINERS



## 616 of 2024

---

Issued by Brisbane Maritime Region on 20 December 2024

**Area:** Southport pilotage area  
**Locality:** Gold Coast Broadwater  
**Activity:** Anchorage prohibition

Mariners are advised that:

The anchoring of all ships in the Southport mega yacht berth swing basin, between the Southport Yacht Club mega yacht berth, to S16 channel mark, to S15 Channel mark, west to a buoy on the 3.5m contour line, then north to a buoy on the 3.5m contour line, then east to S13 channel mark, then east to S14 Channel mark then south east to D-Arm Southport Yacht Club, then south to B-Arm Southport Yacht Club, then south east to the commencement point off the Southport Yacht Club mega yacht berth will be prohibited from 2 January 2025 without prior authorisation of Maritime Safety Queensland, as defined in the schedule and chartlet C7-483-1.

Two buoys will be placed at Latitude 27° 58.289' S, Longitude 153° 25.300' E and Latitude 27° 58.452' S Longitude 153° 25.332' E to mark the western extremity of the no anchoring zone.

Mariners should note this anchorage prohibition.

**Refer to notice:** none

**Cancel notice:** none

**AUS charts affected:** AUS814

**ENC Cells affected:** AU428153

---

Latitude and longitude positions are on WGS84 horizontal datum and are compatible with GDA2020 datum.

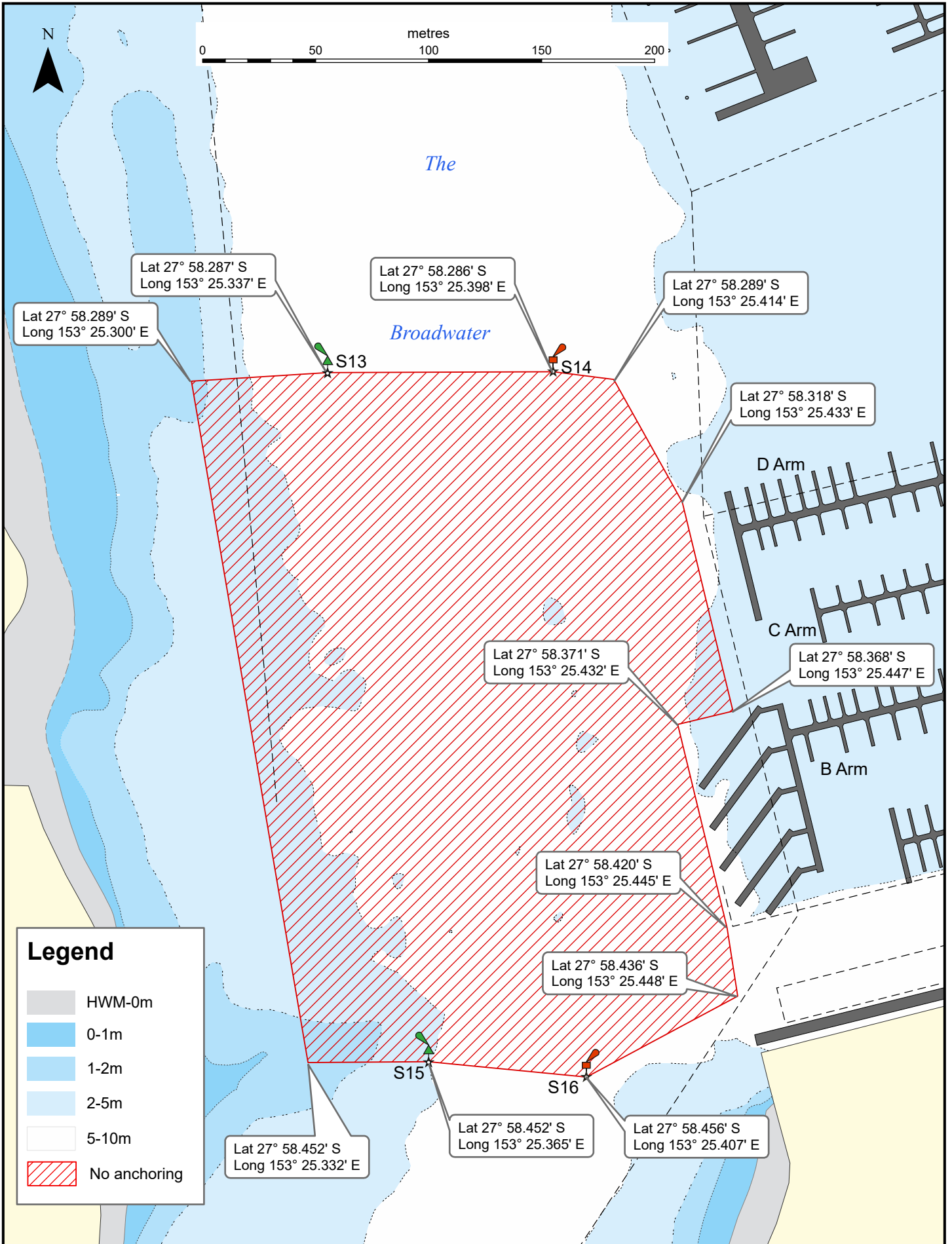
**For further information about this notice, please contact:**

The Brisbane Regional Harbour Master's office:

Phone: 07 3632 7500

Email: [vtsbrisbane@msq.qld.gov.au](mailto:vtsbrisbane@msq.qld.gov.au)

**Notice authorised by:** Regional Harbour Master (Brisbane) - Maritime Safety Queensland



**Map: C7-483-1**

Horizontal datum: GDA2020  
 Map projection: UTM (MGA zone 56)  
 Prepared 12 September 2024  
**Maritime Safety Queensland**  
 Port Operations and VTS - Spatial Services

Navigation constraints issued by Regional Harbour Master (Brisbane)

**SWING BASIN**  
**NO ANCHORING**

THE BROADWATER - GOLD COAST

© The State of Queensland 2024  
 Transport and Main Roads

