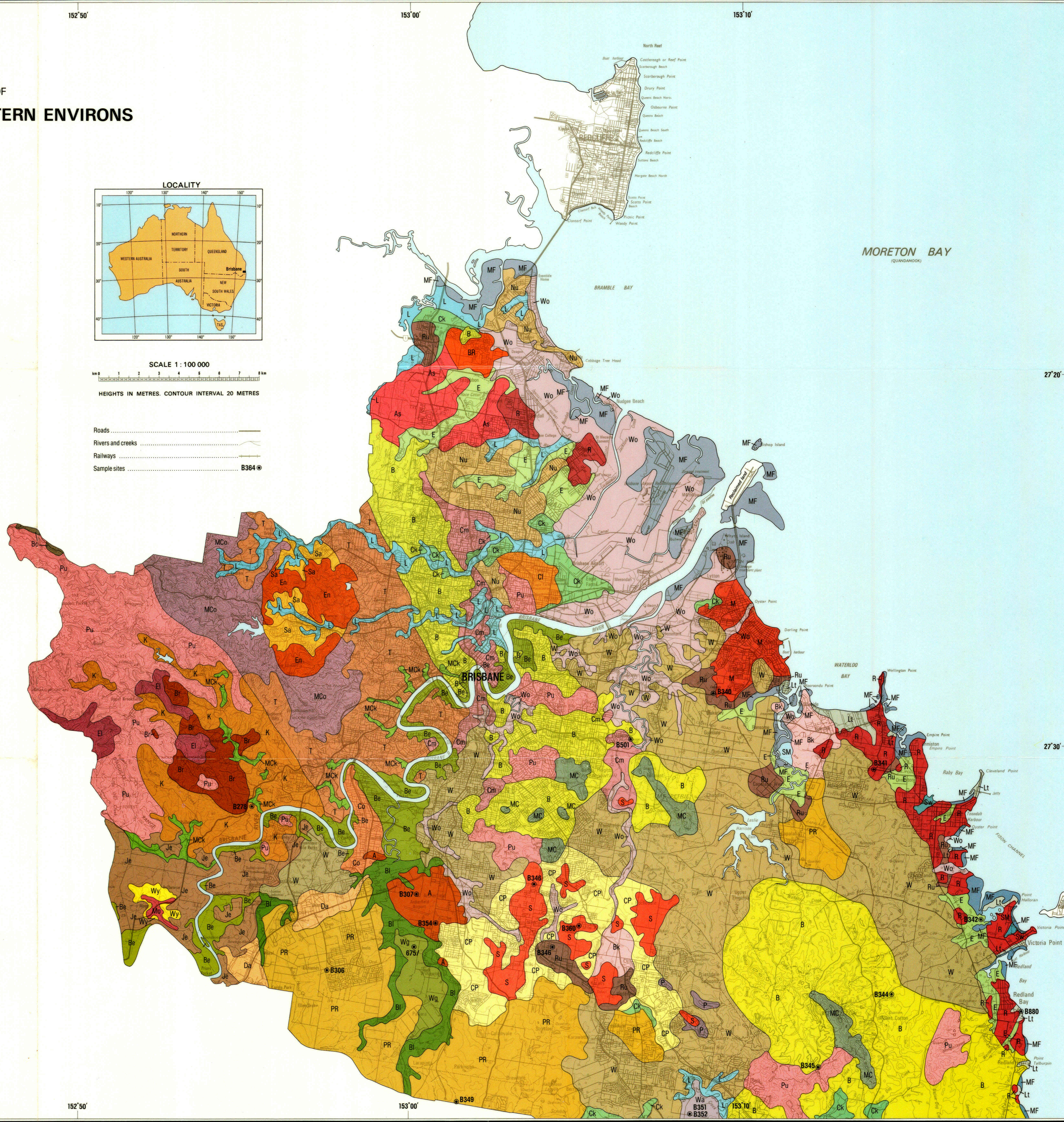
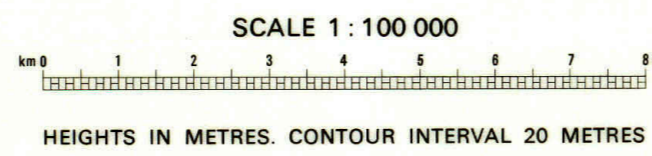
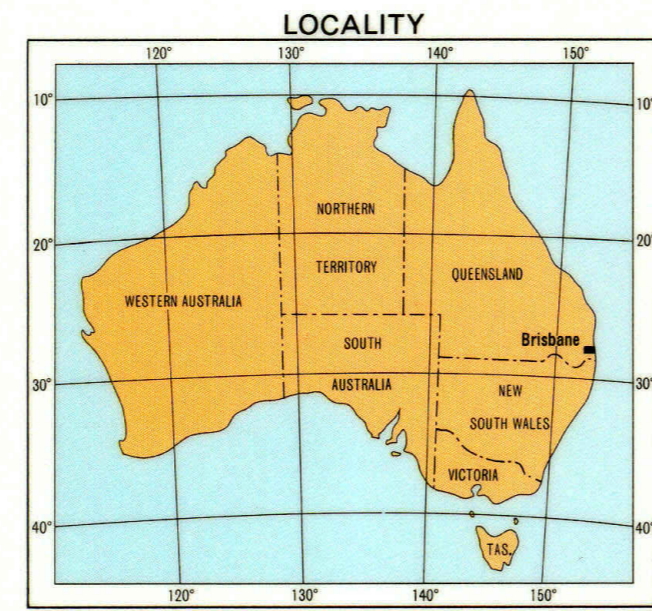




THE SOIL LANDSCAPES OF BRISBANE AND SOUTH-EASTERN ENVIRONS QUEENSLAND

MAP LEGEND

SOIL LANDSCAPE	DOMINANT SOIL GROUPS	LANDSCAPE AND PARENT ROCK
SOILS SHOWING LITTLE PROFILE DEVELOPMENT		
LOWLANDS		
L	LOGAN	Low terraces and flood plains of river sediment.
MF	MUDFLATS	Tidal flats of estuarine muds.
SM	SALT MARSH	Low coastal plains of estuarine sediments.
HIGH HILLS AND STEEPLY SLOPING AREAS		
Cm	CHEMERSIDE	Low hills of rhyolitic tuff.
En	ENOGGERA	Steep hills of granite.
MCo	MT COOT-THA	Steep high hills of phyllite and hornfels.
MC	MT COTTON	High hills of quartzite.
P	PRIESTDALE	Steep hills of coarse sandstone.
Pu	PULLENVALE	Low hills of greywackes, shales, phyllites, etc.
SOILS SHOWING WEAK PROFILE DIFFERENTIATION		
A	ARCHERFIELD	Low hills of basalt and plains of clay alluvium.
Be	BRISBANE RIVER	Low undulating plain and terrace remnants of sandy alluvium.
Br	BROOKFIELD	Hills of basic volcanic rock.
Ru	RUNCORN	Low hills of highly weathered basalt.
Wa	WATERFORD	Terraces of clay alluvium.
SOILS DOMINATED BY SESQUIOXIDES		
As	ASPLEY	Hills of clays and sandy clays.
Bk	BIRKDALE	Low hills of weathered basalt.
BR	BRACKEN RIDGE	Low hills of ferruginous sandstone.
Cl	CLAYFIELD	Low undulating surface on gravelly clays and sandstone.
Co	CORINDA	Low hills and undulating surface of sandstones and clays.
EI	ELPHINSTONE	Steep hills of basic volcanic rocks.
M	MANLY	Gently undulating plateau surface and low hills of sandstone and basalt.
Mo	MOGILL	Plateau remnants of deeply weathered sandstone and gravel beds.
R	REDLANDS	Low hills of deeply weathered (lateritized) basalt and clay.
S	SUNNYBANK	Undulating plateau and slopes on Tertiary sediments.
SOILS WITH MARKEDLY DIFFERENTIATED PROFILES		
B	BEENLEIGH	Low hills of greywacke, phyllite, shale etc.
Bo	BOOMBANA	Steep hills of granodiorite.
Ck	CARBROOK	Low terraces and flood plains of alluvium.
CP	COOPERS PLAINS	Dissected plateau edge, on sandy clays and sandstones.
Da	DARRA	Undulating surface on mudstone, siltstone and sandstone.
Je	JAMBOREE	Low hills of deeply weathered sandstone and conglomerate.
K	KENMORE	Hills of greywackes, siltstones and shales.
Nu	NUNDAH	Low hills of sandstones, shales and clay.
PR	PARK RIDGE	Low hills and undulating surface on sandstone with shale and conglomerate.
Sa	SAMFORD	Low hills of granodiorite.
T	TOOWONG	Low hills of phyllite.
Wy	WITTY	Hills of gravel beds, clays and weakly consolidated sandstone.
W	WOODRIDGE	Low hills of sandstones and shales.
SOILS SHOWING THE INFLUENCE OF POOR DRAINAGE		
Bl	BLUNDER	Flood plains of sandy alluvium.
E	EPRAPAH	Low terraces of silty alluvium and flood plains of coastal streams.
Lt	LOTA	Low plains and beach ridges of sands.
MCK	MOGGILL CK	Creek flats of sandy and clayey alluvium.
Sw	SWAMP	Depressions on low coastal plains of sandy and clayey alluvium.
Wg	WILLAWONG	Low-lying undulating plain and low terraces of sand and clayey alluvium.
Wo	WOONGOOLBA	Low coastal plains and narrow valley floors of alluvium.



MORETON BAY (QUANDAMOOK)

Note: A soil landscape is a natural area of land in which the soils are derived from a limited range of rock types and have a specific relation to topography, each soil landscape has a characteristic drainage pattern, expressed as the "drainage net". Only the major soils of the unit are shown.

This map is a compilation based on geological and soil information, extended by air-photo interpretation. Except at widely separated points the unit boundaries were not mapped in the field, the units are based on an interpretation of soil distribution before disturbance by man.

Compiled by G. G. Beckmann, G. D. Hubble, C. H. Thompson, K. J. Smith, (1976).

The original map was compiled on the Geological Map of Brisbane (Tucker and Houston 1967) and the Beenleigh 1 mile military map (Australian Survey Corps, 1947, No. 193, Beenleigh 1 mile series, second edition). The boundaries have been transferred to a base at 1:100,000. This base map is Crown Copyright and has been reproduced by permission of the Director, Division of National Mapping, Department of Resources and Energy and by the Queensland Department of Mapping and Surveying.

This map is a scanned image and some detail may be illegible or lost. All rights are reserved and no part of this publication covered by copyright may be reproduced or copied in any form or by any means except with the written permission of CSIRO Division of Land and Water. To the extent permitted by law, CSIRO excludes all liability to any person or organization for expenses, losses, liability and costs arising directly or indirectly from using this publication (in whole or in part) and any information or material contained in it. The publication must not be used as a means of endorsement without the prior written consent of CSIRO.