





INGLEWOOD-TALWOOD-GLENMORGAN-TARA REGION

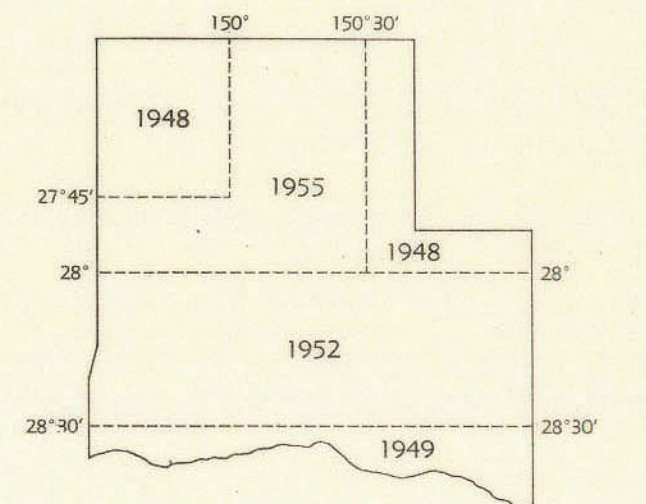
QUEENSLAND

MAP SHOWING CULTIVATED LAND, CLEARED AND UNCLEARED BRIGALOW AND BELAH
This map has been compiled from ground traverses and aerial photographs

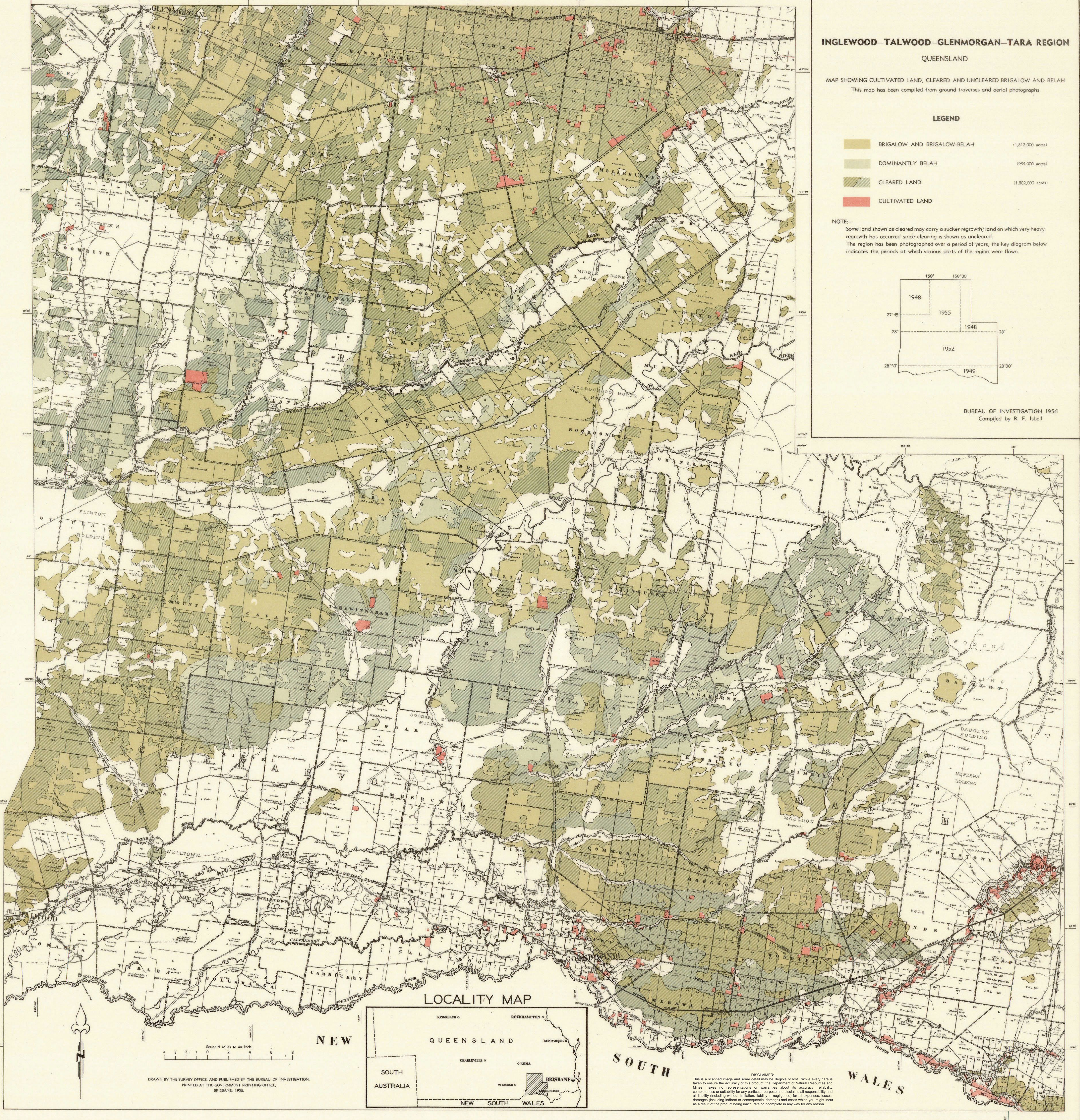
LEGEND

-  BRIGALOW AND BRIGALOW-BELAH (1,812,000 acres)
-  DOMINANTLY BELAH (984,000 acres)
-  CLEARED LAND (1,802,000 acres)
-  CULTIVATED LAND

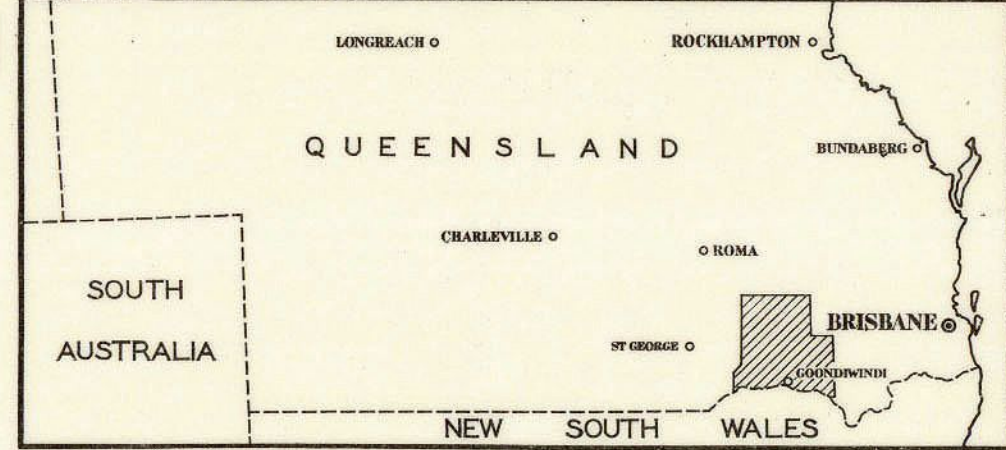
NOTE—
Some land shown as cleared may carry a sucker regrowth; land on which very heavy regrowth has occurred since clearing is shown as uncleared.
The region has been photographed over a period of years; the key diagram below indicates the periods at which various parts of the region were flown.



BUREAU OF INVESTIGATION 1956
Compiled by R. F. Isbell



LOCALITY MAP



DRAWN BY THE SURVEY OFFICE, AND PUBLISHED BY THE BUREAU OF INVESTIGATION.
PRINTED AT THE GOVERNMENT PRINTING OFFICE,
BRISBANE, 1956.

DISCLAIMER:
This is a scanned image and some detail may be illegible or lost. While every care is taken to ensure the accuracy of this product, the Department of Natural Resources and Mines makes no representations or warranties about its accuracy, reliability, completeness or suitability for any particular purpose and disclaims all responsibility and all liability (including without limitation, liability in negligence) for all expenses, losses, damages (including indirect or consequential damage) and costs which you might incur as a result of the product being inaccurate or incomplete in any way for any reason.