

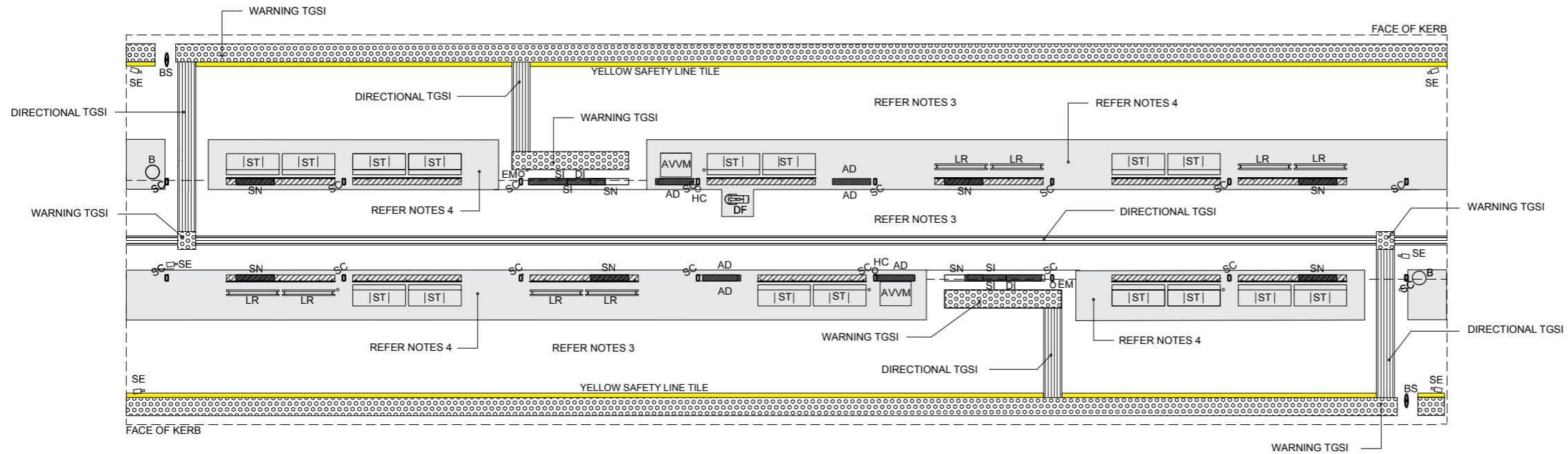
BUS STATION - SINGLE PLATFORM

NOTES

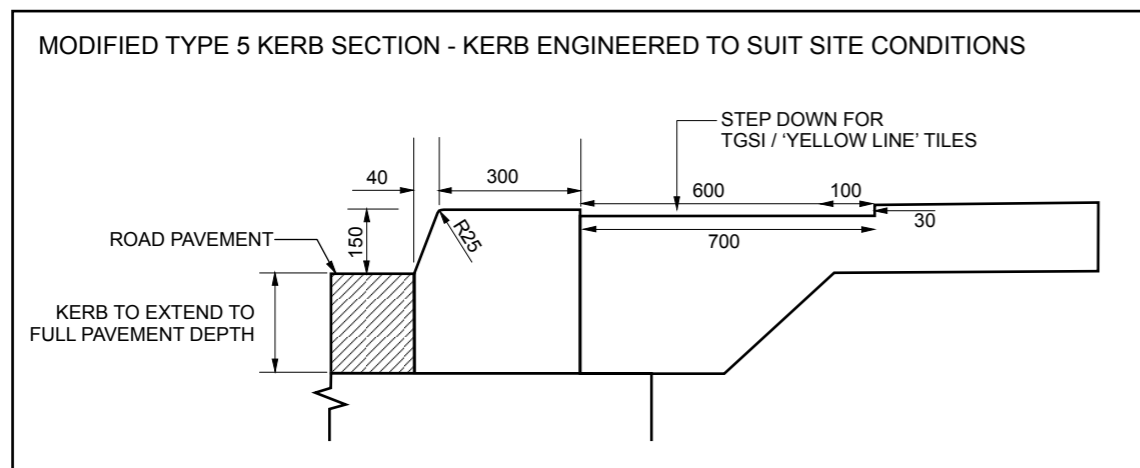
1. ALL DIMENSIONS ARE IN MILLIMETRES UNLESS NOTED OTHERWISE.
2. ALL MATERIALS AND WORKMANSHIP SHALL BE IN ACCORDANCE WITH THE RELEVANT DISABILITY AND AUSTRALIAN STANDARDS.
3. HONED CONCRETE FINISH ON MAIN PLATFORMS & WALKWAYS - HANSON 'COLORADO' COLOUR (OR APPROVED EQUIVALENT) SEALED WITH MINIMUM R11 SLIP RESISTANCE.
4. HONED CONCRETE FINISH UNDER SEATS, BINS, ETC - HANSON 'RACONA' COLOUR (OR APPROVED EQUIVALENT) SEALED WITH MINIMUM R11 SLIP RESISTANCE.
5. YELLOW SAFETY LINE TILE: PLATFORM DELINEATING STRIP TILE SHALL BE 'CTA SLPDST112' IN 200MM X 100MM X 10MM FORMAT MANUFACTURED FROM TOUGHENED GLAZED PORCELAIN IN SAFETY YELLOW COLOUR PMS CODE 143C. LOCATED DIRECTLY BEHIND TGSIs.
6. TACTILE GROUND SURFACE INDICATORS (TGSIs) - GRANITO 'CHARCOAL' / 'BLACK' COLOUR PAVERS (OR APPROVED EQUIVALENT) SEALED WITH MINIMUM R11 SLIP RESISTANCE. TGSIs TO MAINTAIN MINIMUM 30% LUMINANCE CONTRAST TO ADJACENT FINISHES.
7. CONCRETE KERB TO BE MODIFIED TYPE 5 KERB 300MM WIDE WITH NO COLOUR ADDITIVE.

LEGEND

- AD ADVERTISING (FUTURE)
- B RUBBISH BIN
- BS BUS STOP SIGN
- DI DIRECTIONAL INFORMATION SIGN
- SN STATION NAME SIGN
- SI SERVICE INFORMATION DISPLAYS
- EM EMERGENCY CALL POINT
- HC HOSE COCK
- PID ELECTRONIC PASSENGER INFORMATION DISPLAY
- SE SECURITY CAMERA
- SC STEEL SHELTER COLUMN
- ST 1750MM LONG SEAT WITH BACK & ARM RESTS
- LR 1750MM LONG LEAN RAIL



BUS STATION - DOUBLE PLATFORM

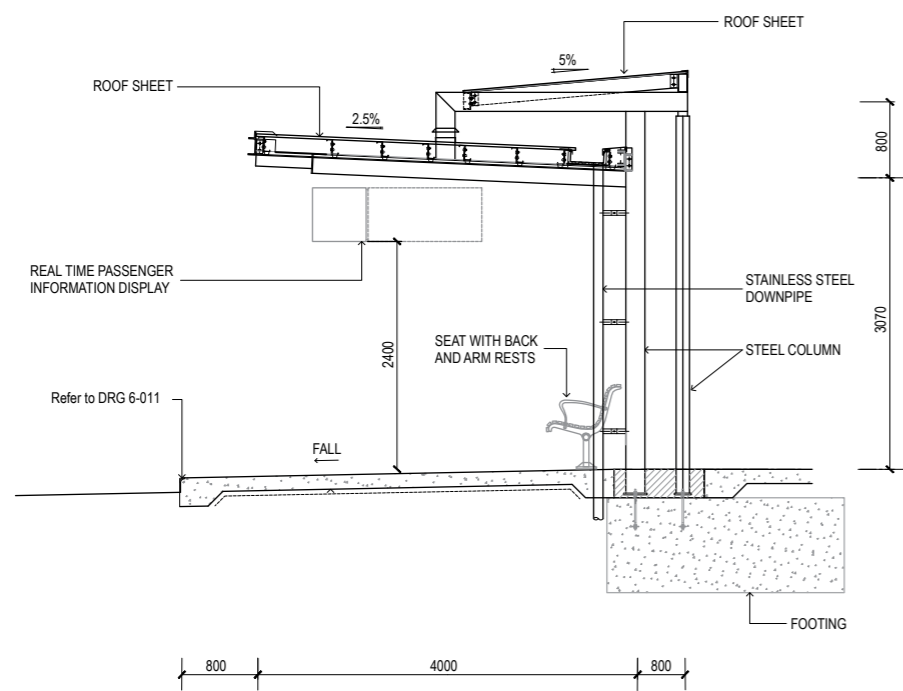


THIS IS A INDICATIVE DESIGN ONLY. SITE CONDITIONS MAY VARY. DESIGN MUST BE CARRIED OUT TO SUIT ACTUAL LOCATION. DRAWING SHOWS TYPICAL PLAN, ELEVATIONS AND DETAILS ONLY

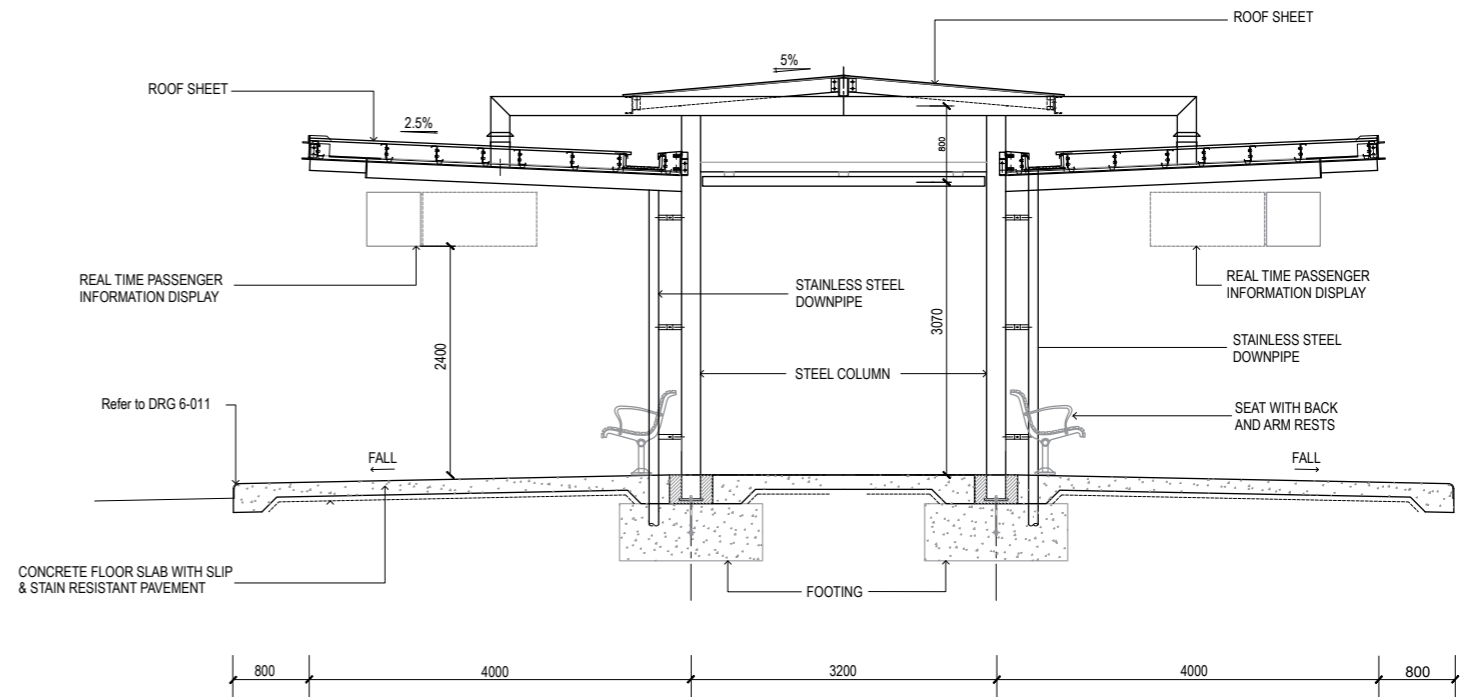


PTIM, BUS STATION INFRASTRUCTURE CHAPTER
TYPICAL SINGLE & DOUBLE PLATFORM REQUIREMENTS

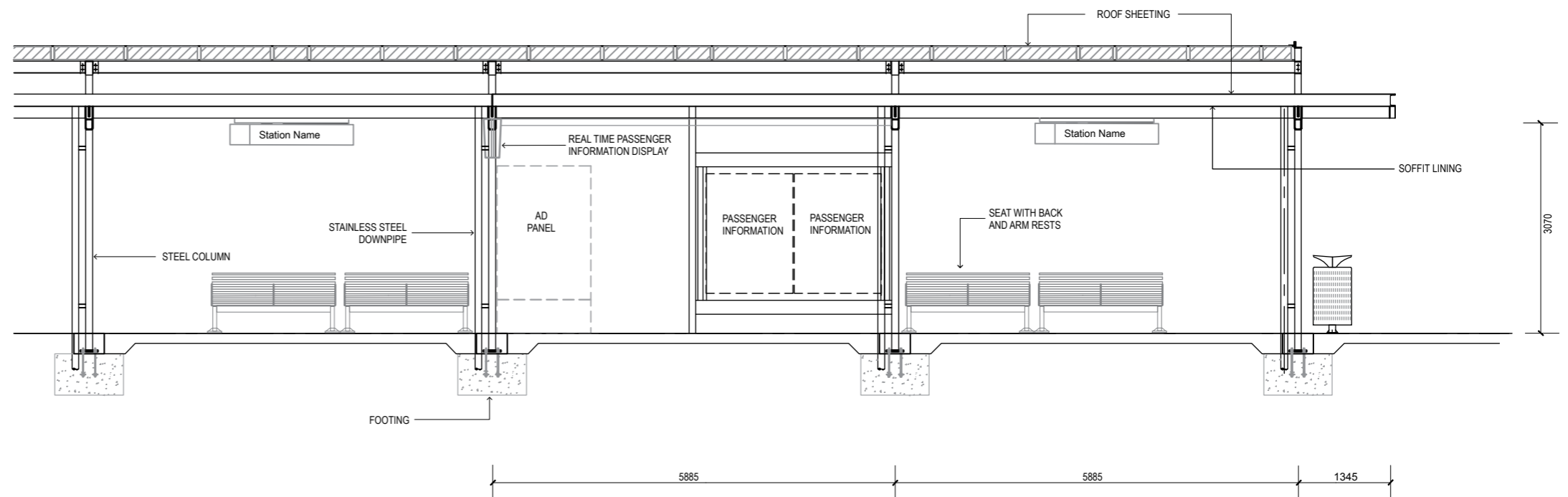
SCALE:	Not to Scale	DRG 6-011
DATE:	November 2014	A



END ELEVATION
SINGLE SHELTER



END ELEVATION
DOUBLE SHELTER WITH CENTRAL WALKWAY



FRONT ELEVATION

NOTES:

1. COLOUR AS PER TRANSLINK'S INFRASTRUCTURE COLOUR PALETTE.
2. STATION FACILITIES TO COMPLY WITH CURRENT DISABILITY STANDARDS.
3. STATION PLATFORMS TO USE CPTED PRINCIPLES.
4. REFER TO PTIM FOR GUIDANCE ON PLATFORM CAPACITY AND LOS
5. PAVEMENT TO BE SLIP AND STAIN RESISTANT.
6. INSTALL APPROPRIATE CONDUITS FOR POWER AND DATA (INCLUDES SHELTER LIGHTING, REAL TIME INFORMATION DISPLAYS, SECURITY CAMERAS, SIGNAGE AND ADVERTISING PANELS).
7. TGS1 TO BE INSTALLED AS SHOWN ON TRANSLINK DRAWINGS. LAYOUT TO BE REVIEWED BY TRANSLINK
8. SEATS, BINS & DRINKING FOUNTAINS AS PER TRANSLINK'S GUIDELINES.
9. DIMENSIONS IN MM.



PTIM, BUS STATION INFRASTRUCTURE CHAPTER
BUS STATION SHELTER (TYPICAL)

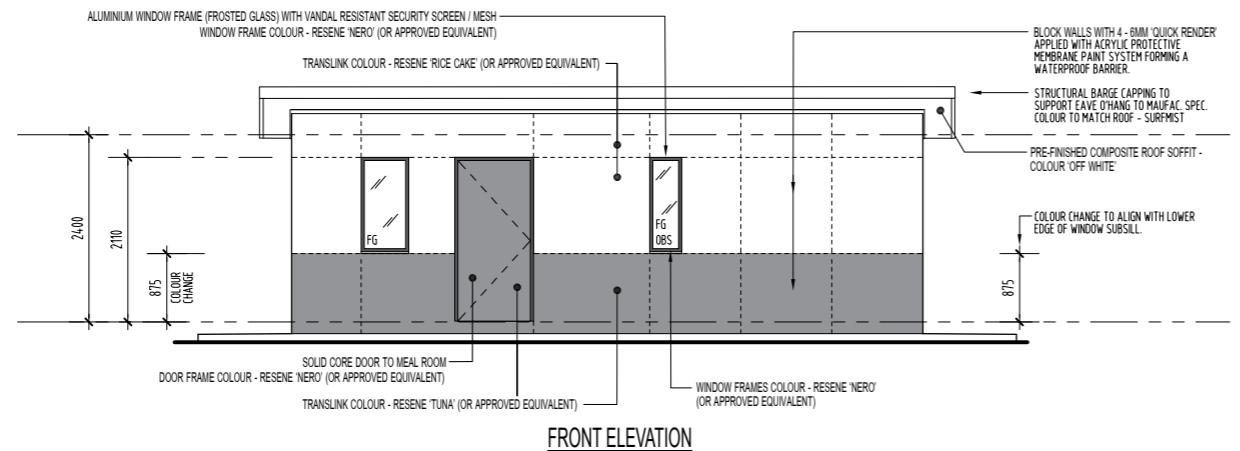
SCALE: NOT TO SCALE

DRG 6-101

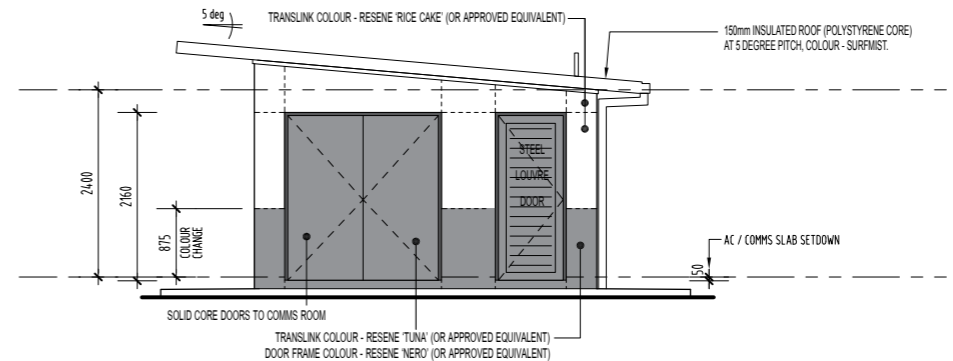
DRAWN:

DATE: JULY 2009

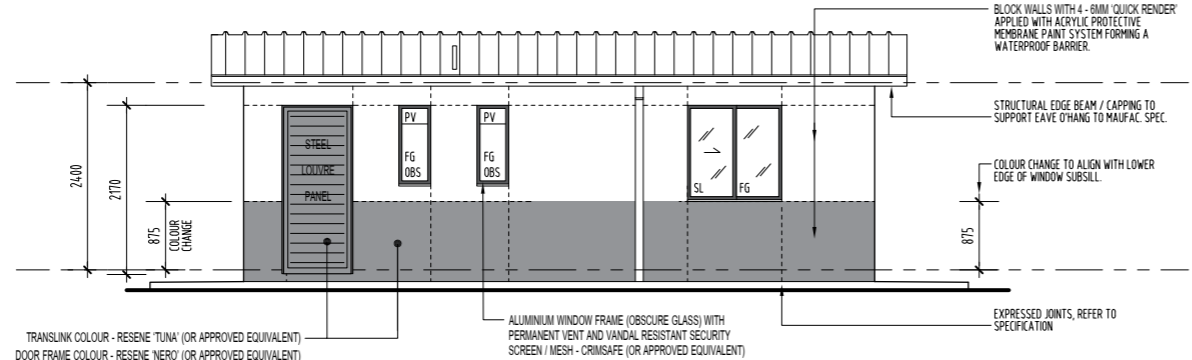
A



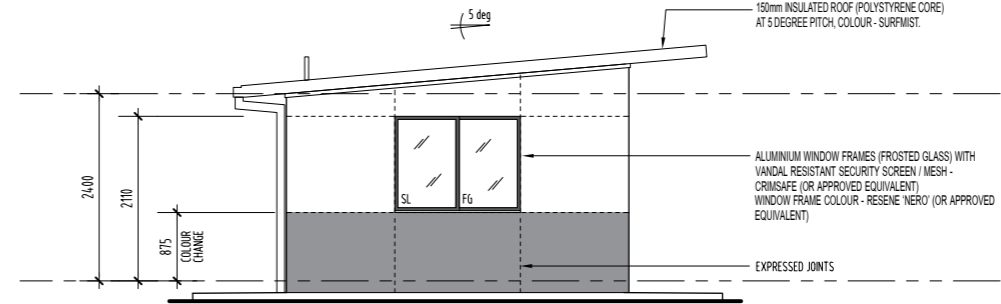
FRONT ELEVATION



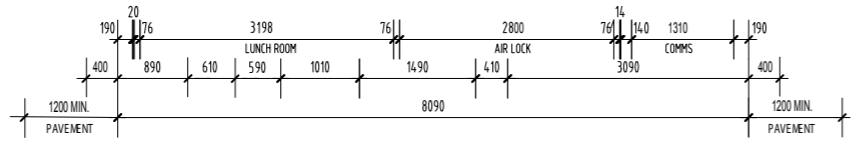
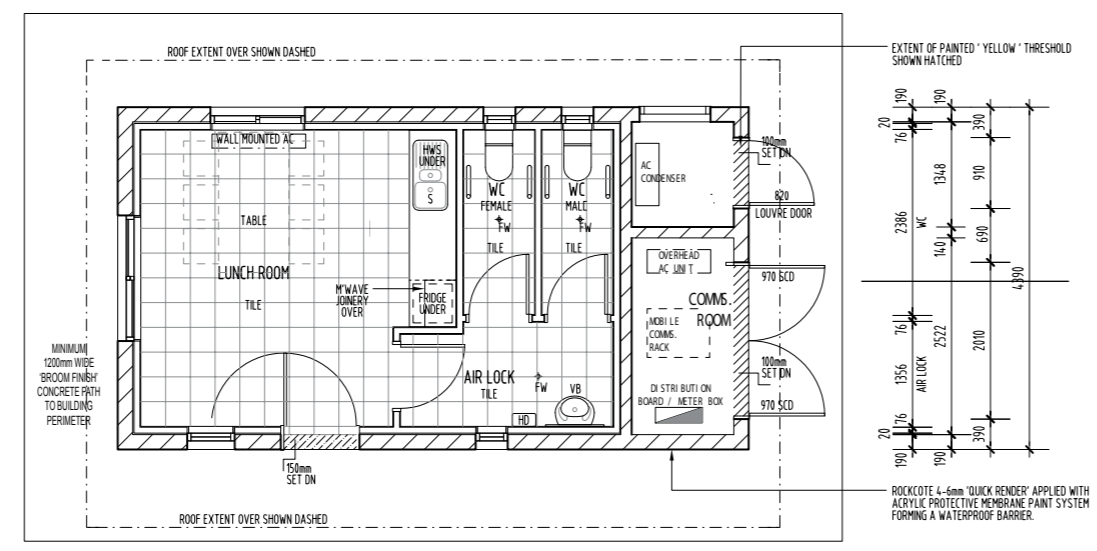
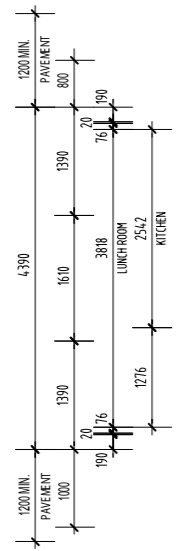
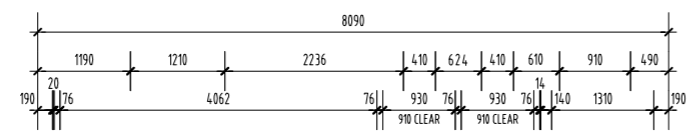
END ELEVATION



REAR ELEVATION



END ELEVATION



- NOTES:**
1. COLOURS AS PER TRANSLink'S INFRASTRUCTURE COLOUR PALETTE.
 2. COMPONENTS TO COMPLY WITH APPLICABLE DISABILITY STANDARDS.
 3. COMPONENTS TO USE CPTD PRINCIPLES (WHERE APPLICABLE).
 4. PAVEMENT TO BE SLIP AND STAIN RESISTANT.
 5. INSTALL APPROPRIATE CONDUITS FOR POWER AND DATA (INCLUDING LIGHTING & SECURITY CAMERAS).
 6. OPTION FOR ALTERNATIVE CONFIGURATION WHERE APPLICABLE
 7. WC AREA MUST BE SEPARATED FROM LUNCH ROOM BY AIRLOCK
 8. DIMENSIONS IN MM.

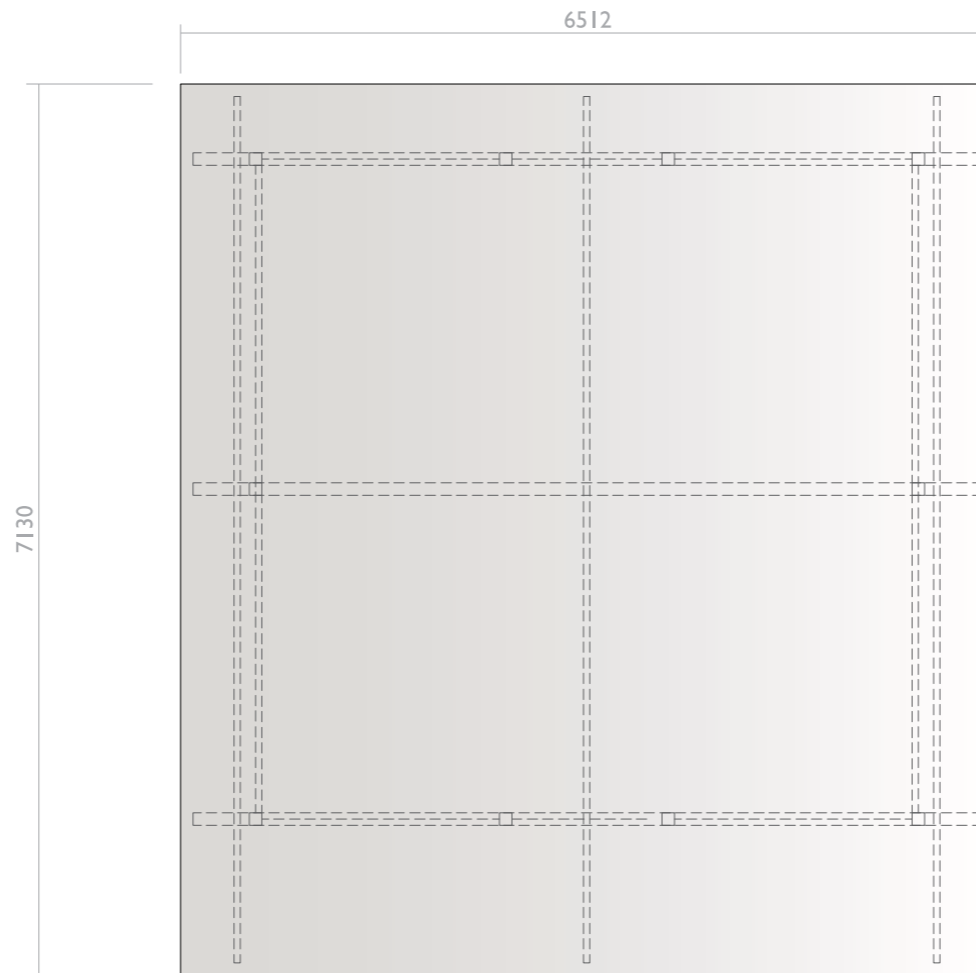


PTIM, BUS STATION INFRASTRUCTURE CHAPTER
DRIVER'S AMENITY ROOM (TYPICAL)

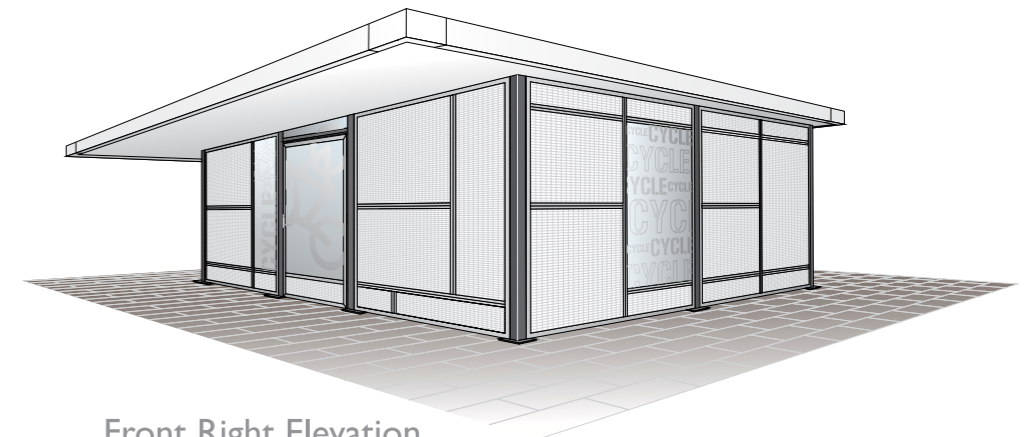
SCALE:	Not to Scale	DRG 6-201		
DATE:	JUNE 2014	A	B	C

NOTES:

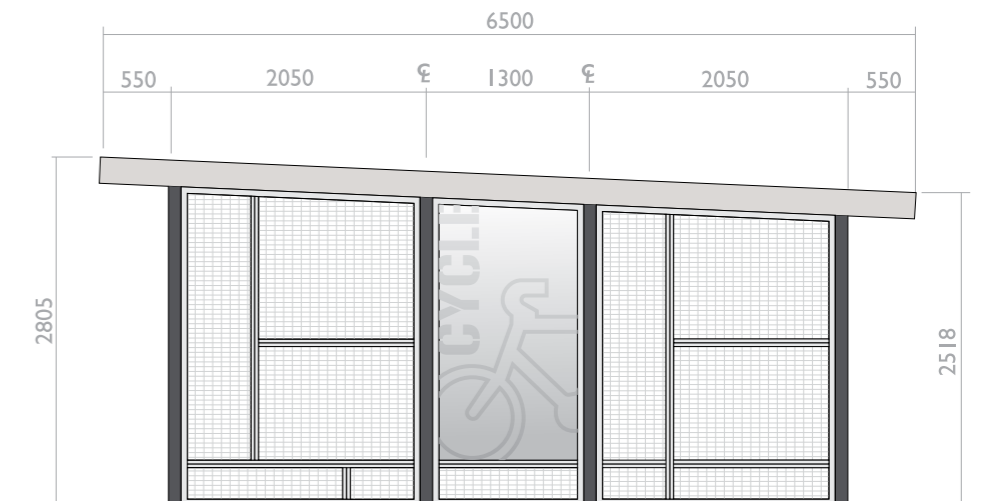
1. COLOURS AS PER TRANSLINK'S INFRASTRUCTURE COLOUR PALETTE.
2. COMPONENTS TO COMPLY WITH APPLICABLE DISABILITY STANDARDS.
3. COMPONENTS TO USE CPTED PRINCIPLES (IF APPLICABLE).
4. PAVEMENT TO BE SLIP AND STAIN RESISTANT.
5. ENCLOSURE SHOULD BE FULLY SECURED AND VANDALISM RESISTANT.
6. COMPACT BICYCLE RACKS SHOULD ALLOW BICYCLES TO BE FULLY SECURED. RACKS TO PREFERABLY BE STAINLESS STEEL OR POWDER COATED FINISH.
7. COMPACT BICYCLE RACKS SHOULD BE SPACED APPROPRIATELY.
8. SHELTER MUST PROVIDE SUITABLE WEATHER PROTECTION
9. FLOOR MUST DRAIN AWAY WITH NO POOLING OF WATER.
10. INSTALL APPROPRIATE CONDUITS FOR POWER AND DATA (INCLUDING LIGHTING & SECURITY CAMERAS).
11. 75MM INSULATED ROOFSHEETING COLOURBOND SURFMIST. FASCIA TO MATCH ROOF COLOUR (ROOF PITCH TO BE ORIENTATED TO SUIT SITE).
12. ALL STEEL WORK TO BE POWDER COATED IN DARK GREY OR APPROVED EQUIVALENT.
13. 2.5 THICK NO.4 FINISH 316 GRADE STAINLESS STEEL WITH ETCHED GRAPHICS (OR APPROVED EQUIVALENT). NOTE: PANEL MATERIAL AND GRAPHICS TO SUIT SITE AND DESIGN REQUIREMENTS.
14. SECURIFOR 358 MESH (OR APPROVED EQUIVALENT) TO BE POWDER COATED BLACK OR APPROVED EQUIVALENT DARK SHADE)
15. DIMENSIONS IN MM.



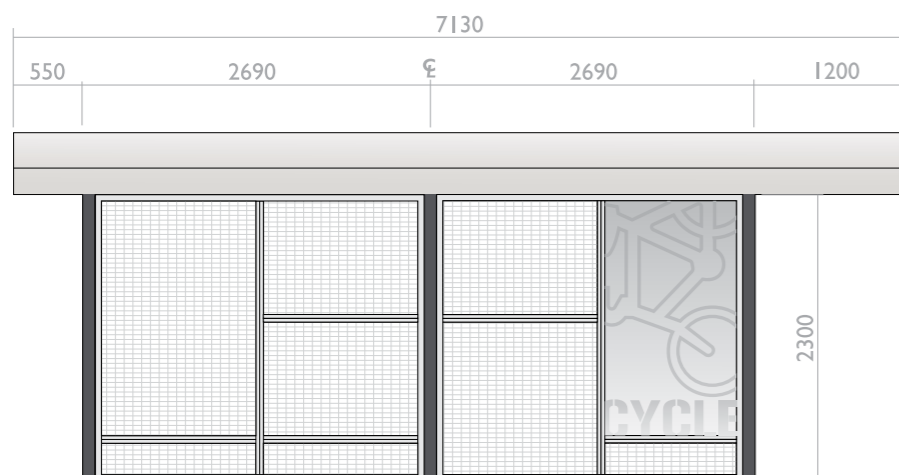
Top Elevation



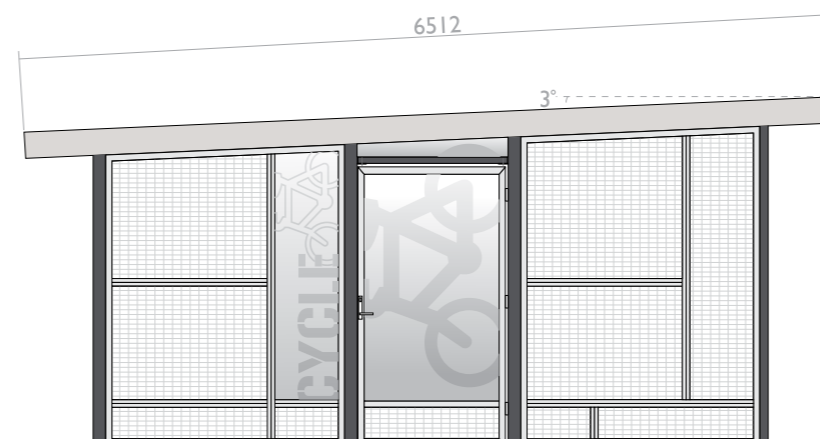
Front Right Elevation



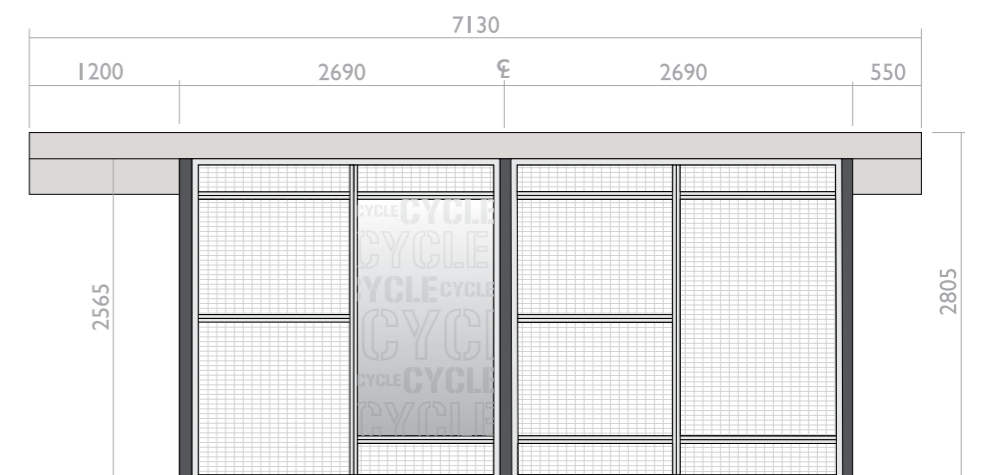
Rear Elevation



Left Elevation



Front Elevation



Right Elevation



PTIM, BUS STATION INFRASTRUCTURE CHAPTER
BICYCLE ENCLOSURE (TYPICAL)

SCALE: NOT TO SCALE

DRG 6-301

DRAWN:

DATE: SEPT 2011

A	B		
---	---	--	--