

NOTICE TO MARINERS



615 (T) of 2023

Issued by Brisbane Maritime Region on 21 December 2023

Area: Brisbane pilotage area
Locality: Mooloolah River Bar
Activity: shoaling

Mariners are advised that:

a hydrographic survey of the Mooloolah River and its coastal bar on Wednesday 20 December 2023, shows the white and green sectors of entrance channel indicated by the port entry light generally have depths in excess of the 2.5 metres design depth at Lowest Astronomical Tide. A shoal patch extends from the end of the eastern breakwater in a westerly direction toward the centre of entrance channel. The shoal patch on the eastern side of the entrance channel's red sector has a least depth of 1.5 metres at LAT.

Map S11-677 attached, shows the current channel. Copies of the survey plan are available from the Sunshine Coast office of Maritime Safety Queensland at Mooloolaba.

Masters of smaller recreational boats, personal watercraft, and passive craft like kayaks and canoes must remain mindful of the heightened risk to larger vessels navigating the river entrance and coastal bar. Except for entering and departing the river, these smaller vessels and passive craft should keep well clear of the coastal bar and not use it for recreational purposes.

Mariners must remain mindful that coastal bars are dynamic in nature with conditions constantly changing. Mariners must plan their crossing of the Mooloolah Bar, having careful consideration to prevailing conditions, the state of the tide, and the draught of their vessels. The coastal bar must be navigated with extreme caution.

Mariners are also reminded that the Mooloolah River entrance is defined as a coastal bar. This means that each person on board an open boat less than 4.8 metres in length must wear an appropriate life jacket while the boat is crossing the coastal bar.

Refer to notice: none
Cancel notice: 498(T) of 2023

AUS charts affected: 236

Latitude and longitude positions are on WGS84 horizontal datum and are compatible with GDA2020 datum.

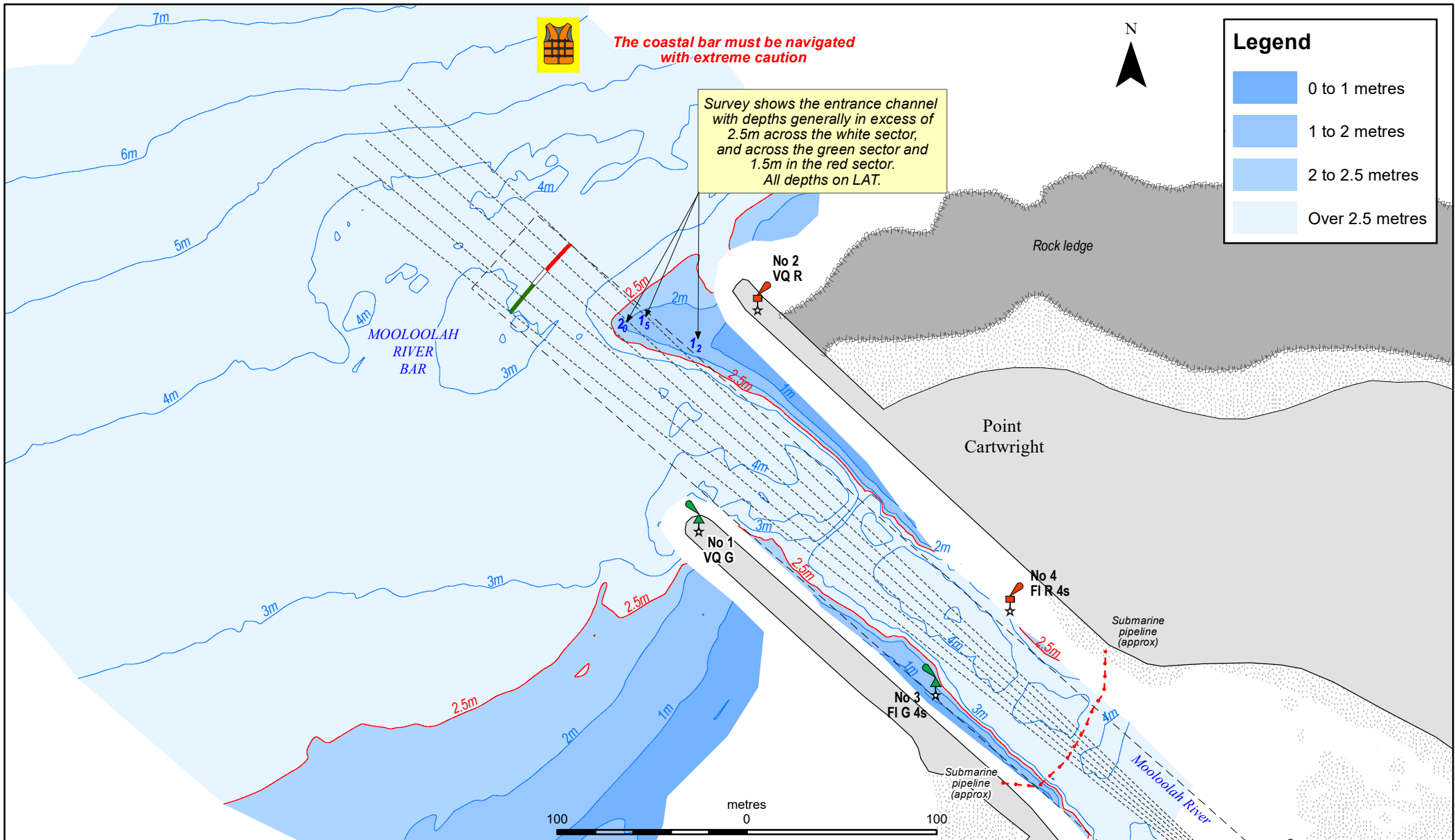
For further information about this notice, please contact:

The Brisbane Regional Harbour Master's office:

Phone: 07 3632 7500

Email: vtsbrisbane@msq.qld.gov.au

Notice authorised by: Regional Harbour Master (Brisbane) - Maritime Safety Queensland



Legend

	0 to 1 metres
	1 to 2 metres
	2 to 2.5 metres
	Over 2.5 metres

To be used with appropriate NTM
 © The State of Queensland 2023
 Transport and Main Roads



Prepared 21 December 2023
 Maritime Safety Queensland
 Spatial Services

QUEENSLAND NOTICE TO MARINERS

Issued by Maritime Safety Queensland

MOOLOOLAH RIVER BAR

Surveyed 20 December 2023

QNTM updates also available
 from www.msq.qld.gov.au
 Datum: GDA2020 horizontal. LAT vertical
 Map projection: UTM (MGA zone 56)

Map S11-677

