

NOTICE TO MARINERS



318 of 2023

Issued by Brisbane Maritime Region on 14 July 2023

Area: Brisbane pilotage area
Locality: Cowan Cowan, Moreton Island
Activity: Aids to Navigation

Mariners are advised that:

The Cowan Light in position latitude 27°08.4795'S longitude 153°21.8422'E with the characteristics Fl. WRG 2.0s 9m 10M has been altered.

The sector angles and intensity have been altered, refer to attached chartlet: C7-466-1.

Refer to notice: 314-2023 (T)

Cancel notice: none

AUS charts affected: 236

Latitude and longitude positions are on WGS84 horizontal datum and are compatible with GDA2020 datum.

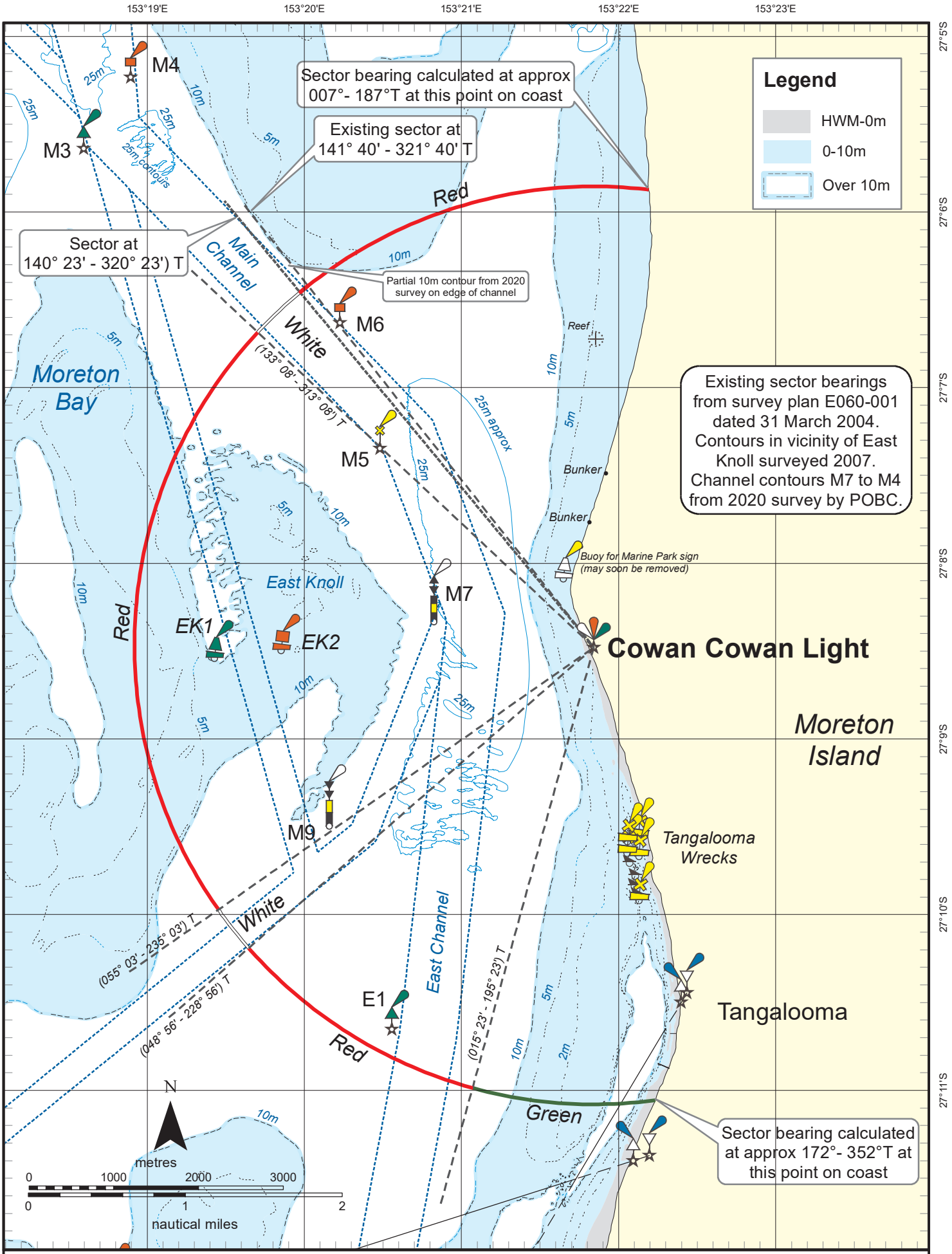
For further information about this notice, please contact:

The Brisbane Regional Harbour Master's office:

Phone: 07 3632 7500

Email: vtsbrisbane@msq.qld.gov.au

Notice authorised by: Regional Harbour Master (Brisbane) - Maritime Safety Queensland



Legend

- HWM-0m
- 0-10m
- Over 10m

Existing sector bearings from survey plan E060-001 dated 31 March 2004. Contours in vicinity of East Knoll surveyed 2007. Channel contours M7 to M4 from 2020 survey by POBC.

Sector at 140° 23' - 320° 23' T

Sector bearing calculated at approx 007° - 187°T at this point on coast

Existing sector at 141° 40' - 321° 40' T

Partial 10m contour from 2020 survey on edge of channel

Sector bearing calculated at approx 172° - 352°T at this point on coast

Map: C7-466-2

Horizontal datum: GDA94
Vertical datum: LAT
Projection: UTM (MGA zone 56)

Prepared 14 July 2023
Maritime Safety Queensland - Spatial Services

COWAN COWAN LIGHT UPGRADE

Moreton Island

© The State of Queensland 2023 (Transport and Main Roads)

