

NOTICE TO MARINERS

427 of 2023

Issued by Brisbane Maritime Region on 26 September 2023

Area: Brisbane pilotage area
Locality: Quarantine Flats Reach, Brisbane River
Activity: Aids to Navigation Established in position.

Mariners are advised that:

The following lead lights have been established in position:

No.	Latitude	Longitude	Light Characteristics
5F	27°24.7406'S	153°08.8669'E	Q.Bu.1s Q 1s (Day) & Fl.R.4s
5R	27°24.8429'S	153°08.8270'E	Iso.Bu.2s Iso.2s (Day) & Fl.Y.4s
6F	27°25.2150'S	153°08.5110'E	Q.Bu.1s Q 1s (Day) & Q.R
6R	27°25.1888'S	153°08.5778'E	Iso.Bu.2s Iso.2s (Day) & Fl.Y.4s

Refer to the accompanying map S11-656-1.

Mariners should navigate the area with caution.

Refer to notice: 426 of 2023

Cancel notice: 418T of 2023, 416T of 2023

AUS charts affected: none

Latitude and longitude positions are on WGS84 horizontal datum and are compatible with GDA2020 datum.

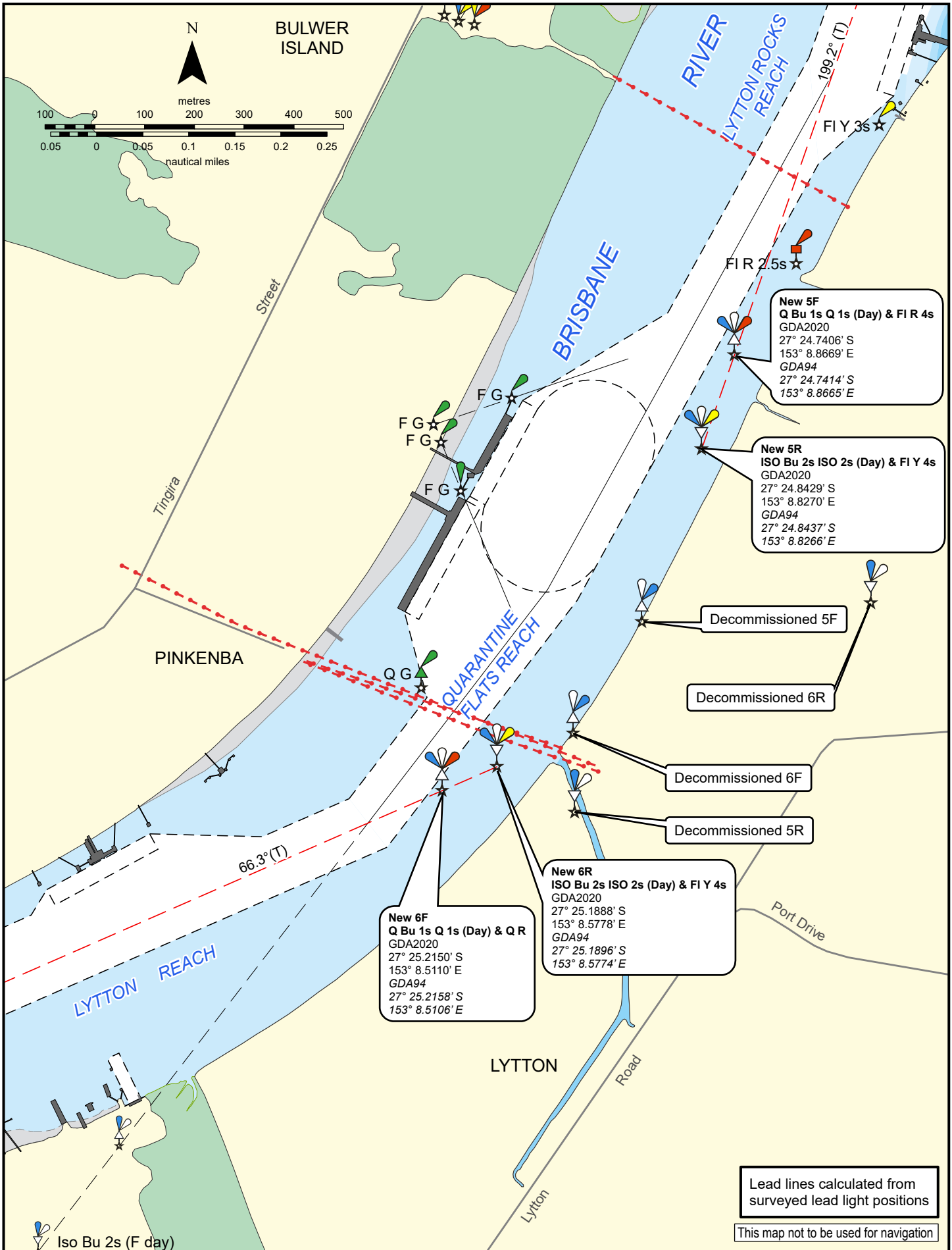
For further information about this notice, please contact:

The Brisbane Regional Harbour Master's office:

Phone: 07 3632 7500

Email: vtsbrisbane@msq.qld.gov.au

Notice authorised by: Regional Harbour Master (Brisbane) - Maritime Safety Queensland



Map: S11-656-1
 Horizontal datum: GDA2020
 Projection: UTM (zone 56)
 Prepared 26 September 2023
 Maritime Safety Queensland
 Spatial Services

QUARANTINE FLATS REACH

No. 5 and No. 6 LEADS RELOCATION

PORT OF BRISBANE

© The State of Queensland 2023
 Transport and Main Roads

