

Land cover change in the Cape York Natural Resource Management region

2010–11

Summary

The woody vegetation clearing rate for 2010–11 in the Cape York region was 1114 hectares per year (ha/yr) – a 14 per cent decrease from 2009–10, continuing the decreasing trend observed since 2006–07 era.

Clearing of woody remnant vegetation accounted for 91 per cent of the woody vegetation clearing in the region, at a rate of 1010 ha/yr which represented a decrease of 16 per cent from 2009–10.

The replacement land cover class of pasture accounted for 48 per cent of the clearing and mining accounted for 29 per cent of the clearing in this region.

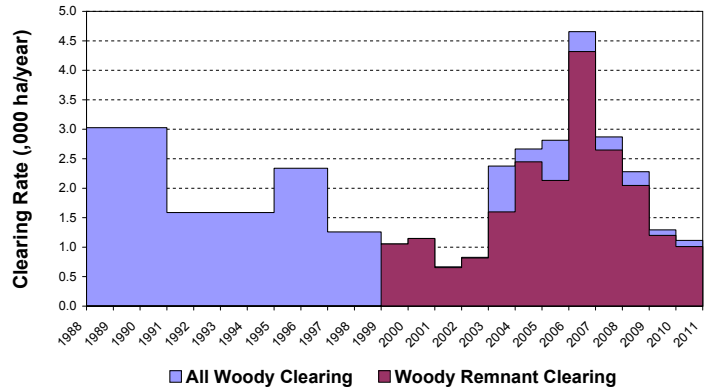


Figure 1. Woody vegetation clearing rates in the Cape York NRM region.

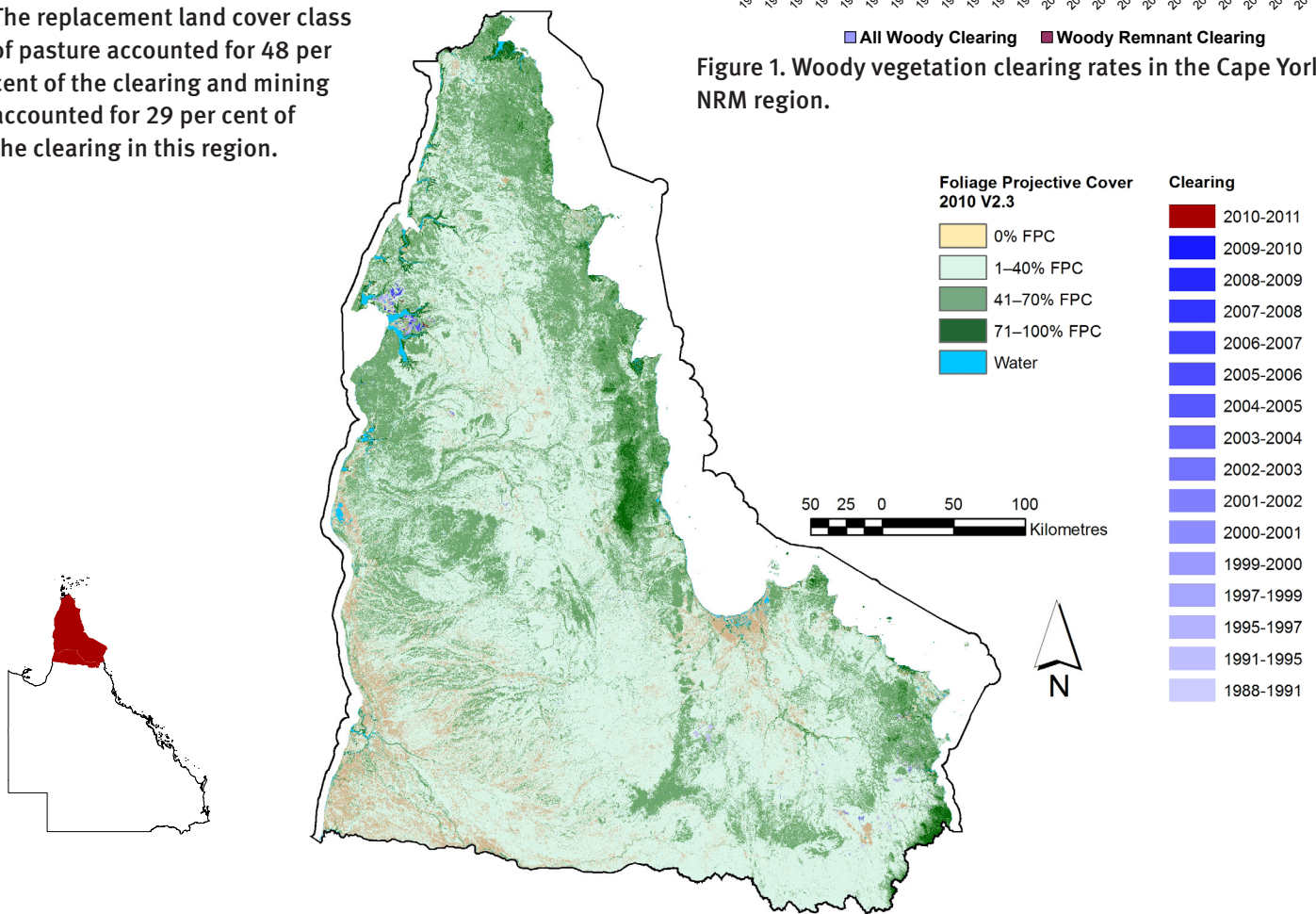


Figure 2. Woody vegetation clearing for each change period.

Note that the Cape York Natural Resource Management region overlaps the Northern Gulf Natural Resource Management region.

Woody vegetation clearing by remnant status

Table 1. Remnant and Non-remnant woody vegetation clearing Rates in the Cape York NRM region.

Period	Woody vegetation clearing rate (,000 ha/yr) of		
	Non-remnant woody	Remnant woody*	Total woody
1999–00	0.002	1.053	1.055
2000–01	0.000	1.147	1.147
2001–02	0.012	0.654	0.666
2002–03	0.013	0.816	0.828
2003–04	0.778	1.598	2.376
2004–05	0.218	2.448	2.666
2005–06	0.682	2.133	2.814
2006–07	0.337	4.319	4.656
2007–08	0.220	2.649	2.870
2008–09	0.234	2.047	2.281
2009–10	0.093	1.200	1.294
2010–11	0.104	1.010	1.114

* Regional ecosystem remnant mapping prior to 1999 not used in this analysis.

Woody vegetation clearing by tenure

Table 2. Woody vegetation clearing rates in the Cape York NRM region by tenure.

Period	Woody vegetation clearing rate (,000 ha/yr) on				
	Freehold	Leasehold	Reserves	Other tenures	Total
1988–91	0.408	1.528	0.073	1.018	3.027
1991–95	0.282	1.061	0.005	0.284	1.632
1995–97	0.525	0.888	0.034	0.892	2.339
1997–99	0.105	0.484	0.016	0.654	1.259
1999–00	0.181	0.214	0.002	0.658	1.055
2000–01	0.134	0.323	0.009	0.682	1.147
2001–02	0.168	0.480	0.002	0.016	0.666
2002–03	0.190	0.444	0.030	0.164	0.828
2003–04	0.888	0.659	0.072	0.756	2.375
2004–05	0.428	1.380	0.043	0.814	2.665
2005–06	0.139	1.595	0.066	1.015	2.814
2006–07	0.148	2.442	0.121	1.944	4.656
2007–08	0.023	0.942	0.008	1.896	2.870
2008–09	0.124	1.104	0.033	1.020	2.281
2009–10	0.075	0.577	0.019	0.622	1.294
2010–11	0.167	0.588	0.041	0.319	1.114

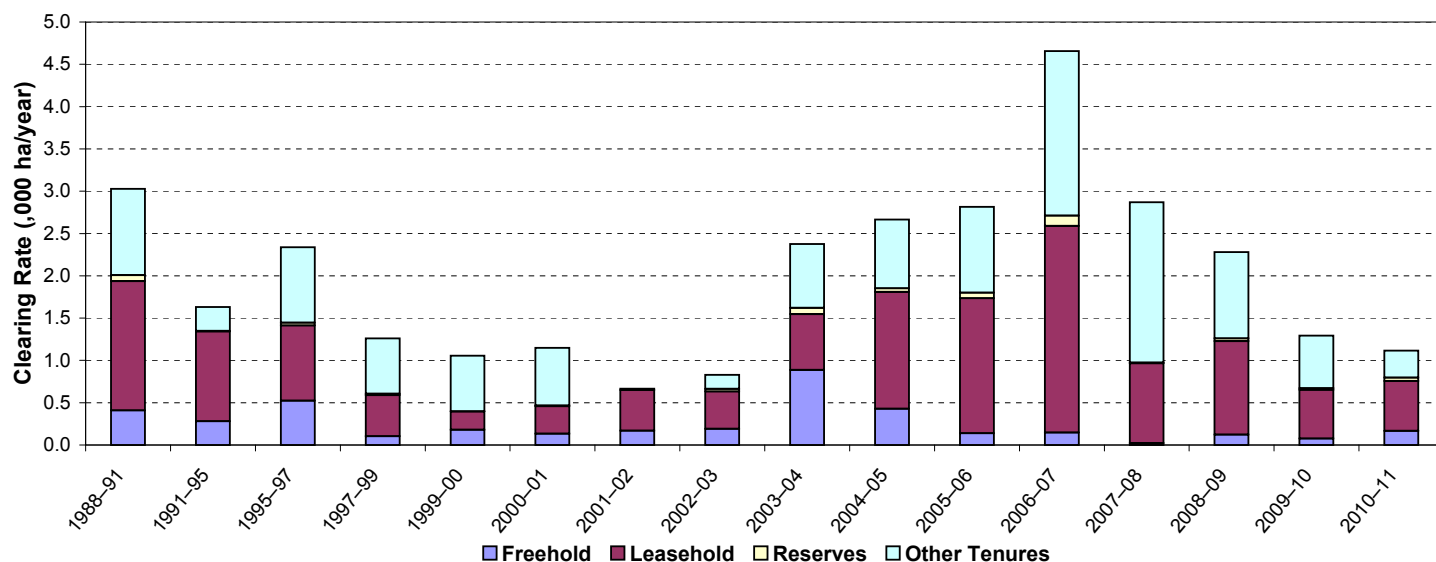


Figure 3. Woody vegetation clearing rates in the Cape York NRM region by tenure.

Woody vegetation clearing by subcatchment

Table 3. Woody vegetation clearing rates in the Cape York NRM region by subcatchment #.

Woody vegetation clearing rate (,000 ha/yr) for	Period				
	2006–07	2007–08	2008–09	2009–10	2010–11
Alice River	0.056	0.033	0.258	0.064	0.072
Archer River	0.106	0.121	0.104	0.004	0.095
Coen River	0.095	0.149	0.062	0.031	0.072
Coleman River	0.554	0.165	0.073	0.054	0.059
Ducie River	0.030	0.104	0.003	0.000	0.008
Edward River	0.134	0.040	0.026	0.019	0.040
Embley River	0.127	0.455	0.283	0.040	0.047
Endeavour River	0.116	0.000	0.044	0.019	0.038
Hann River	0.266	0.040	0.067	0.006	0.053
Holroyd River	0.106	0.069	0.063	0.005	0.003
Jacky Jacky Creek	0.000	0.000	0.000	0.000	0.000
Jardine River	0.105	0.011	0.016	0.000	0.000
Jeannie river	0.000	0.000	0.031	0.014	0.115
Kendall River	0.120	0.011	0.092	0.001	0.009
Lockhart River	0.044	0.003	0.000	0.003	0.001
McDonald River	0.000	0.000	0.013	0.000	0.000
Mission River	1.605	1.369	0.628	0.583	0.283
Mitchell River	0.212	0.040	0.007	0.172	0.046
Normanby River	0.443	0.025	0.111	0.137	0.118
Olive River	0.000	0.024	0.000	0.000	0.000
Palmer River	0.032	0.046	0.109	0.125	0.031
Pascoe River	0.016	0.002	0.000	0.003	0.008
Skardon River	0.000	0.000	0.000	0.000	0.000
Stewart River	0.097	0.000	0.007	0.000	0.014
Watson River	0.262	0.153	0.243	0.006	0.001
Wenlock River	0.132	0.009	0.042	0.007	0.003
Total	4.656	2.870	2.281	1.294	1.115

*includes overlap area

Please refer to Figure 26 of the main report (DSITIA, 2014) for the location of each subcatchment.

Remaining woody vegetation

Table 4. Remaining woody vegetation in the Cape York NRM region by subcatchment.

	Catchment area (,000 ha)	Area woody 2010 V2.3 (,000 ha)	% of catchment woody in 2010
Alice River	1294	1160	90
Archer River	1061	1000	94
Coen River	321	310	97
Coleman River	534	497	93
Ducie River	358	347	97
Edward River	752	639	85
Embley River	193	181	94
Endeavour River	210	206	98
Hann River	956	839	88
Holroyd River	544	526	97
Jacky Jacky Creek	296	285	97
Jardine River	328	320	98
Jeannie river	363	342	94
Kendall River	485	480	99
Lockhart River	288	282	98
McDonald River	271	263	97
Mission River	268	246	92
Mitchell River	861	613	71
Normanby River	1485	1406	95
Olive River	205	201	98
Palmer River	811	784	97
Pascoe River	212	211	99
Skardon River	44	41	94
Stewart River	274	264	96
Watson River	468	453	97
Wenlock River	752	726	97
Total	13643	12628	93

Woody vegetation clearing by replacement land cover

Table 5. Woody vegetation clearing rates in the Cape York NRM region by replacement land cover.

Period	Woody vegetation clearing rate (,000 ha/yr) for						Total*
	Pasture	Crop	Forestry	Mining	Infrastructure	Settlement	
1988-91	1.090	0.000	0.000	0.597	1.339	0.002	3.027
1991-95	0.520	0.608	0.000	0.368	0.089	0.001	1.587
1995-97	0.044	0.599	0.000	0.697	0.991	0.007	2.338
1997-99	0.154	0.655	0.000	0.018	0.431	0.002	1.260
1999-00	0.810	0.004	0.002	0.000	0.235	0.003	1.055
2000-01	0.918	0.000	0.000	0.000	0.229	0.000	1.147
2001-02	0.488	0.000	0.000	0.000	0.176	0.003	0.666
2002-03	0.718	0.000	0.000	0.005	0.105	0.000	0.828
2003-04	1.360	0.000	0.000	0.634	0.379	0.003	2.376
2004-05	0.735	0.000	0.000	0.833	1.086	0.012	2.666
2005-06	1.382	0.000	0.000	0.979	0.450	0.003	2.814
2006-07	2.309	0.000	0.000	1.841	0.491	0.015	4.656
2007-08	0.915	0.000	0.000	1.918	0.033	0.004	2.870
2008-09	0.891	0.000	0.000	0.732	0.656	0.002	2.281
2009-10	0.479	0.000	0.000	0.616	0.190	0.008	1.294
2010-11	0.535	0.000	0.000	0.328	0.248	0.003	1.114

* Total excludes natural tree death.

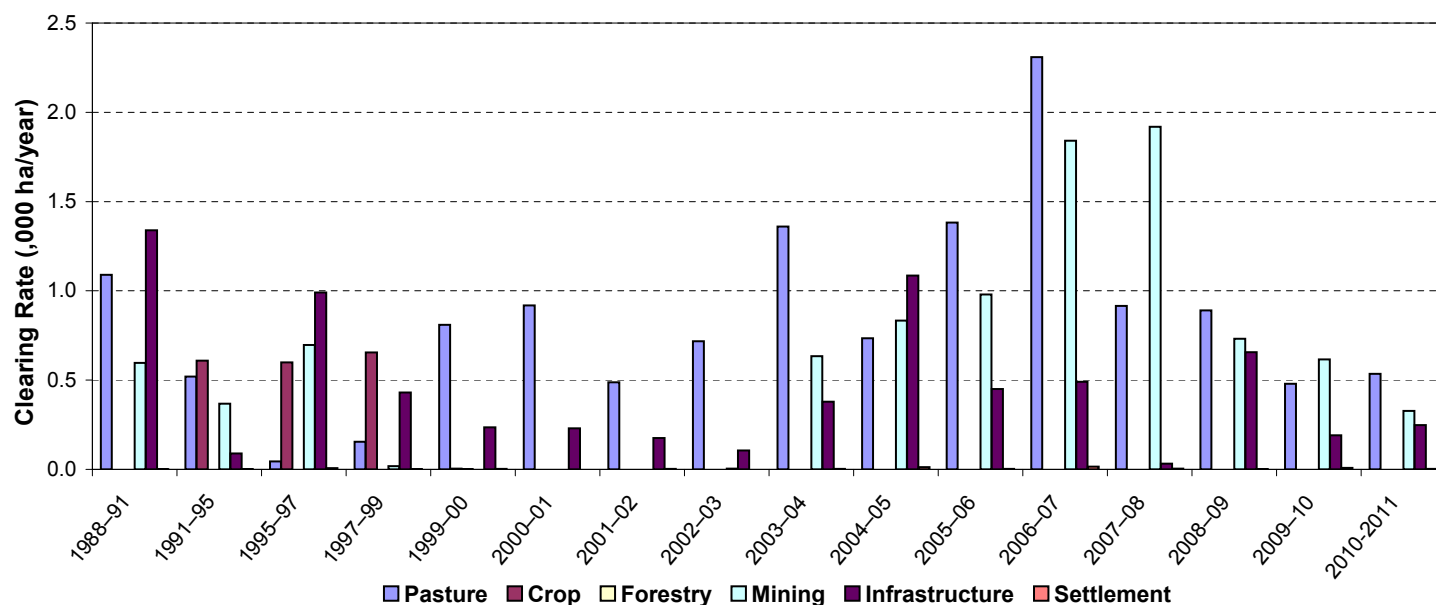


Figure 4. Woody vegetation clearing rates in the Cape York NRM region by replacement land cover.

This fact sheet is 2 of 13 in a series detailing land cover change in Queensland's Natural Resource Management Regions. These fact sheets are addenda to the report: Department of Science, Information Technology, Innovation and the Arts (2014). *Land cover change in Queensland 2010-11: a Statewide Landcover and Trees Study (SLATS) Report, 2014*. Department of Science, Information Technology, Innovation and the Arts, Brisbane.

Please refer to this report for further background, methods and explanatory notes.

The Queensland Government supports and encourages the dissemination and exchange of information. However, copyright protects this document. The State of Queensland has no objection to this material being reproduced, made available online or electronically, provided it is for your personal, non-commercial use, or use within your organisation; the material remains unaltered; and the State of Queensland is recognised as the owner.

© The State of Queensland 2014.

For further information:
 Statewide Landcover and Trees Study
 41 Boggo Road
 Dutton Park QLD 4102
 Phone: 61 7 3170 5686
 Email: siproductdelivery@dnrm.qld.gov.au