

Land cover change in the **Condamine Alliance** Natural Resource Management region

2010–11

Summary

For the 2010–11 era, the Condamine region clearing rate decreased to 1 769 hectares per year (ha/yr), 27 per cent lower than the previous era.

The clearing rate for remnant woody vegetation in the Condamine region in the 2010–11 era remained consistent with the previous era, accounting for 42 per cent of total clearing.

The dominant replacement land cover class continued to be pasture, representing 71 per cent of the total woody vegetation clearing in the region.

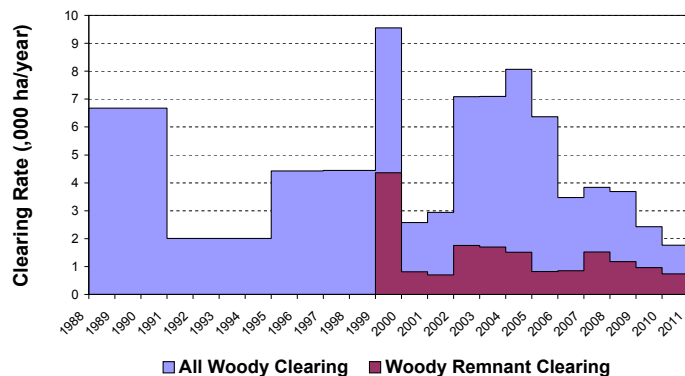


Figure 1. Woody vegetation clearing rates in the Condamine Alliance NRM region.

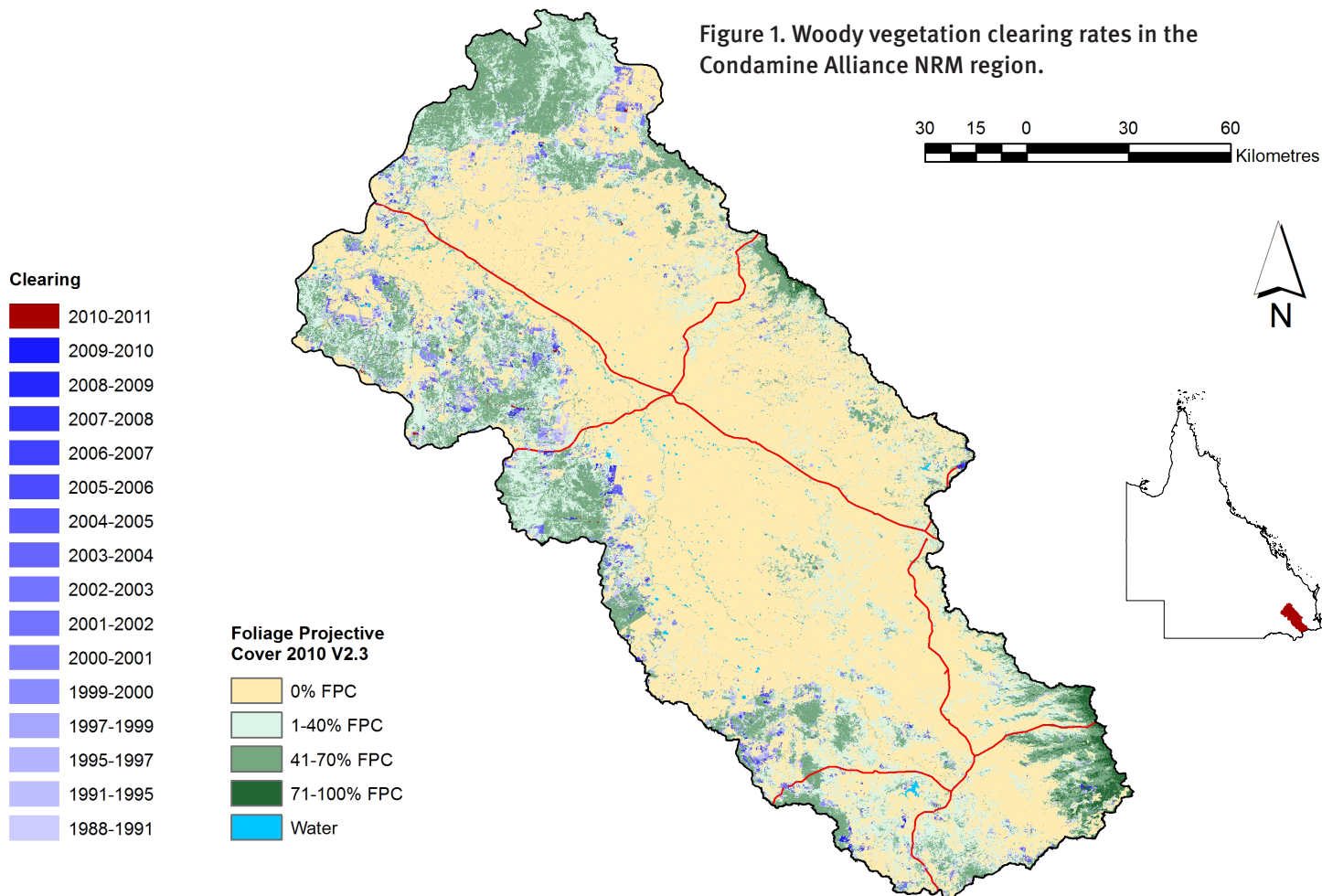


Figure 2. Woody vegetation clearing for each change period.

Woody vegetation clearing by remnant status

Table 1. Remnant and non-remnant woody vegetation clearing rates in the Condamine Alliance NRM region.

Period	Woody vegetation clearing rate (,000 ha/yr) of		
	Non-remnant woody	Remnant woody*	Total woody
1999–00	5.191	4.356	9.547
2000–01	1.765	0.810	2.576
2001–02	2.241	0.702	2.943
2002–03	5.329	1.758	7.087
2003–04	5.391	1.701	7.092
2004–05	6.553	1.515	8.068
2005–06	5.548	0.822	6.370
2006–07	2.620	0.853	3.473
2007–08	2.314	1.523	3.837
2008–09	2.510	1.176	3.686
2009–10	1.468	0.960	2.428
2010–11	1.020	0.748	1.768

* Regional ecosystem remnant mapping prior to 1999 not used in this analysis.

Woody vegetation clearing by tenure

Table 2. Woody vegetation clearing rates in the Condamine Alliance NRM region by tenure.

Period	Woody vegetation clearing rate (,000 ha/yr) on				
	Freehold	Leasehold	Reserves	Other tenures	Total
1988–91	6.119	0.464	0.086	0.006	6.675
1991–95	1.872	0.117	0.014	0.000	2.003
1995–97	4.214	0.183	0.028	0.003	4.428
1997–99	4.068	0.233	0.129	0.010	4.441
1999–00	9.338	0.129	0.080	0.000	9.547
2000–01	2.494	0.024	0.057	0.000	2.576
2001–02	2.716	0.128	0.094	0.000	2.938
2002–03	6.866	0.158	0.062	0.000	7.086
2003–04	6.875	0.149	0.068	0.000	7.092
2004–05	7.717	0.187	0.164	0.000	8.068
2005–06	5.994	0.296	0.079	0.000	6.369
2006–07	3.097	0.118	0.258	0.000	3.473
2007–08	3.297	0.144	0.397	0.000	3.837
2008–09	3.328	0.064	0.294	0.000	3.686
2009–10	1.978	0.062	0.388	0.000	2.428
2010–11	1.397	0.044	0.327	0.000	1.768

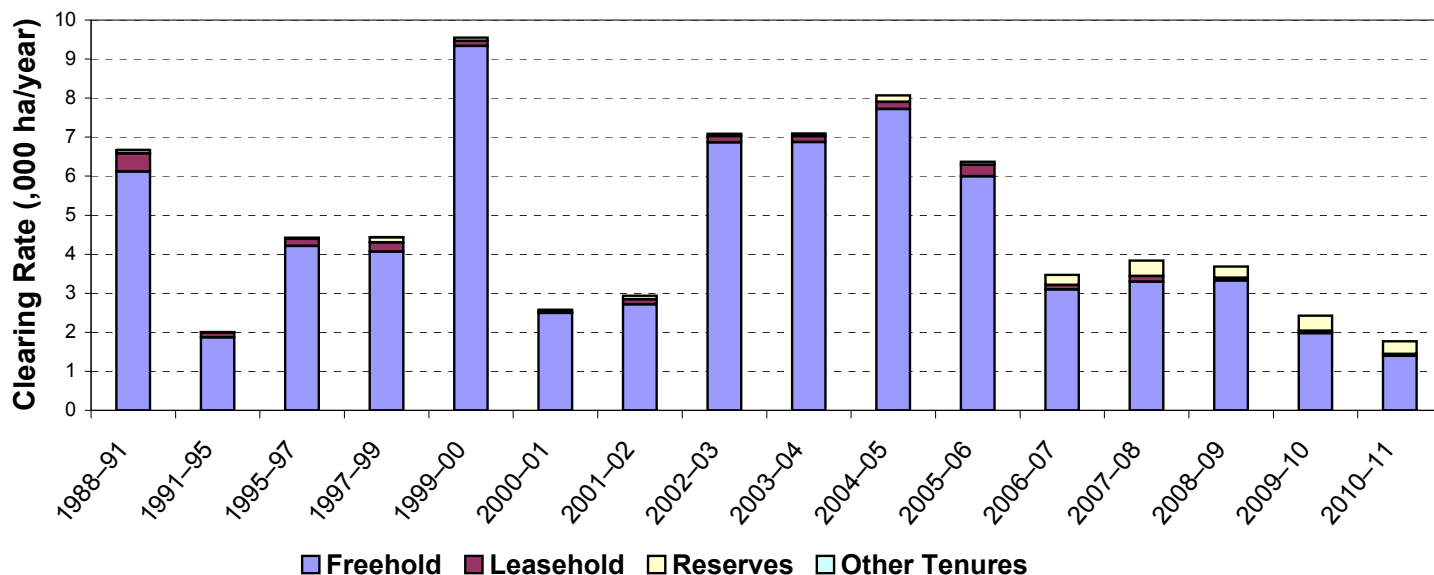


Figure 3. Woody vegetation clearing rates in the Condamine Alliance NRM region by tenure.

Woody vegetation clearing by subcatchment

Table 3. Woody vegetation clearing rates in the Condamine Alliance NRM region by subcatchment.

Woody vegetation clearing rate (,000 ha/yr) for	Period				
	2006–07	2007–08	2008–09	2009–10	2010–11
Balonne River	0.001	0.000	0.159	0.224	0.129
Condamine River	3.471	3.837	3.527	2.205	1.639
Total	3.473	3.837	3.686	2.429	1.768

Please refer to Figure 26 of the main report (DSITIA, 2014) for the location of each subcatchment.

Remaining woody vegetation

Table 4. Remaining woody vegetation in the Condamine Alliance NRM region by subcatchment.

	Catchment area (,000 ha)	Area woody 2010 V2.3 (,000 ha)	% of catchment woody in 2010
Balonne River	101	81	80
Condamine River	2443	918	38
Total	2544	999	39

Woody vegetation clearing by replacement land cover

Table 5. Woody vegetation clearing rates in the Condamine Alliance NRM region by replacement land cover.

Period	Woody vegetation clearing rate (,000ha/yr) for						Total*
	Pasture	Crop	Forestry	Mining	Infrastructure	Settlement	
1988–91	4.871	1.588	0.000	0.002	0.213	0.001	6.676
1991–95	1.888	0.029	0.022	0.001	0.057	0.006	2.004
1995–97	3.282	1.016	0.021	0.026	0.081	0.005	4.429
1997–99	3.650	0.485	0.053	0.000	0.252	0.001	4.441
1999–00	7.304	2.044	0.083	0.000	0.111	0.006	9.547
2000–01	1.535	0.828	0.034	0.024	0.154	0.001	2.576
2001–02	2.824	0.013	0.005	0.009	0.090	0.003	2.943
2002–03	7.033	0.000	0.000	0.000	0.032	0.022	7.087
2003–04	6.549	0.048	0.066	0.003	0.369	0.056	7.092
2004–05	7.184	0.007	0.253	0.242	0.375	0.008	8.068
2005–06	6.139	0.025	0.082	0.116	0.002	0.005	6.370
2006–07	2.607	0.000	0.567	0.094	0.197	0.006	3.473
2007–08	3.206	0.000	0.419	0.057	0.149	0.006	3.837
2008–09	2.868	0.002	0.297	0.072	0.443	0.004	3.686
2009–10	1.904	0.000	0.390	0.008	0.119	0.008	2.428
2010–11	1.260	0.022	0.325	0.104	0.053	0.005	1.769

* Total excludes natural tree death.

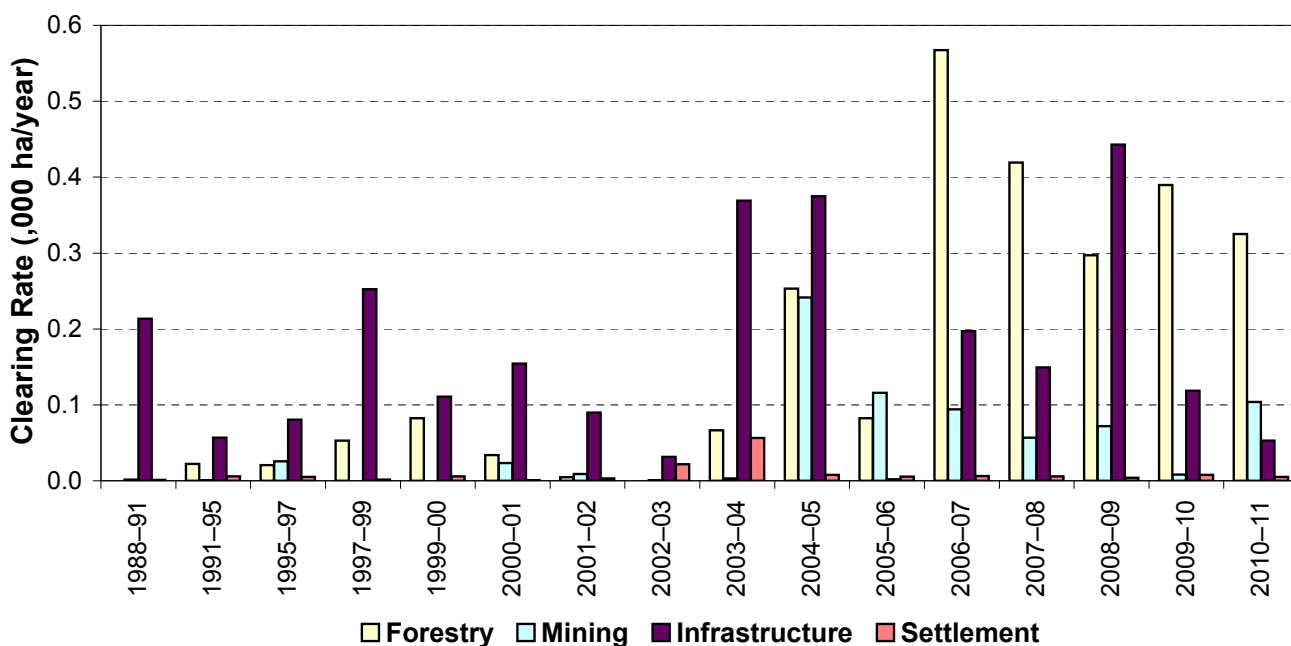
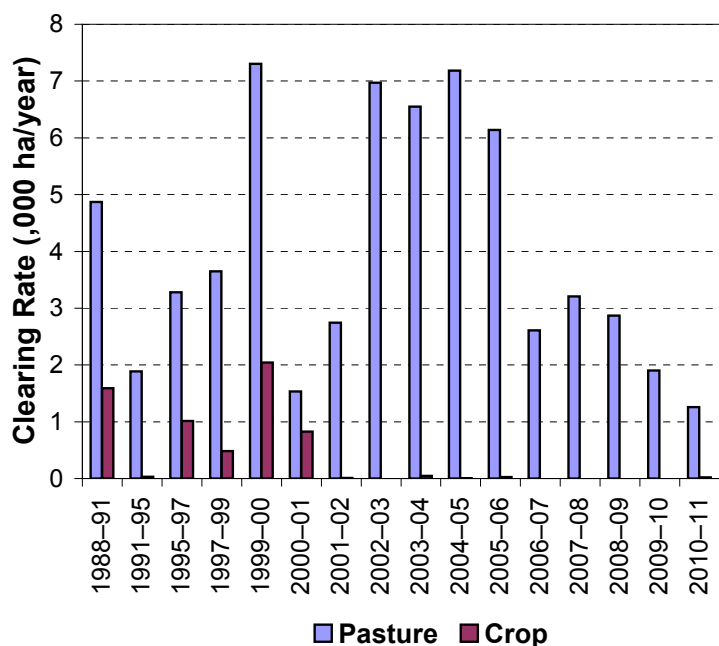


Figure 4. Woody vegetation clearing rates in the Condamine Alliance NRM region by replacement land cover.

This fact sheet is 3 of 13 in a series detailing land cover change in Queensland's Natural Resource Management Regions. These fact sheets are addenda to the report: Department of Science, Information Technology, Innovation and the Arts (2014). *Land cover change in Queensland 2010-11: a Statewide Landcover and Trees Study (SLATS) Report, 2014*. Department of Science, Information Technology, Innovation and the Arts, Brisbane.

Please refer to this report for further background, methods and explanatory notes.

The Queensland Government supports and encourages the dissemination and exchange of information. However, copyright protects this document. The State of Queensland has no objection to this material being reproduced, made available online or electronically, provided it is for your personal, non-commercial use, or use within your organisation; the material remains unaltered; and the State of Queensland is recognised as the owner.

© The State of Queensland 2014.

For further information:
 Statewide Landcover and Trees Study
 41 Boggo Road
 Dutton Park QLD 4102
 Phone: 61 7 3170 5686
 Email: siproductdelivery@dnrm.qld.gov.au