

NOTICE TO MARINERS



042 of 2025

Issued by Gladstone Maritime Region on 12 February 2025

Area: Maryborough pilotage area
Locality: Hook Point, Wide Bay
Activity: Altered port entry light characteristics

Mariners are advised that:

The light characteristics of Hook Point port entry light (PEL), in approximate position latitude 25° 47.030' S longitude 153° 04.728' E, have changed effective 12 February 2025.

The Hook Point PEL centreline will be on a bearing of 249.5 degrees true bearing. It is highly directional with a 5-degree beam width.

The characteristics of the Hook Point PEL looking towards the light are:

- 1 degree on centre line - white
- 0.5 degrees to 1.5 degrees starboard - Isophase green
- 1.5 degrees to 2.5 degrees starboard - fixed green
- 0.5 degrees to 1.5 degrees port - Isophase red
- 1.5 degrees to 2.5 degrees port - fixed red

The direction and light characteristics of the Hook Point PEL are displayed on the accompanying chartlet.

When navigating by the PEL, mariners should aim to remain with the white sector.

The current landfall light on Hook Point will remain in place and operational. The Hook Point Landfall light remains an all-round white light, flashing 3 seconds.

Refer to notice:

Cancel notice: 398 of 2024

AUS charts affected: 815,817

ENC Cells affected: AU426153

Latitude and longitude positions are on WGS84 horizontal datum and are compatible with GDA2020 datum.

For further information about this notice, please contact:

The Gladstone Regional Harbour Master's office:

Phone 07 4839 0208

Email: vtsgladstone@msq.qld.gov.au

Notice authorised by: Regional Harbour Master (Gladstone) - Maritime Safety Queensland

153°4'E

153°5'E

153°6'E

153°7'E

153°8'E



25°44'S

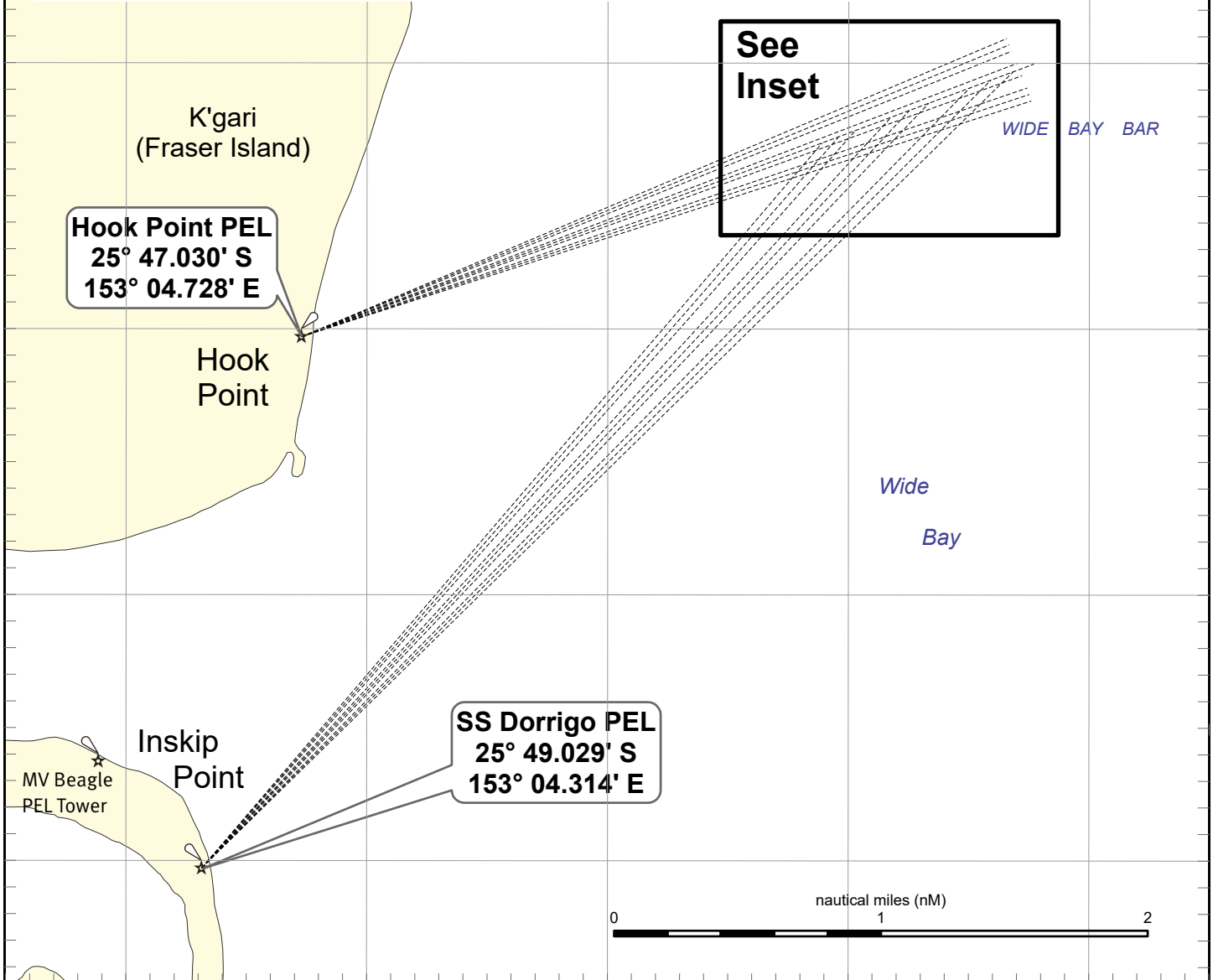
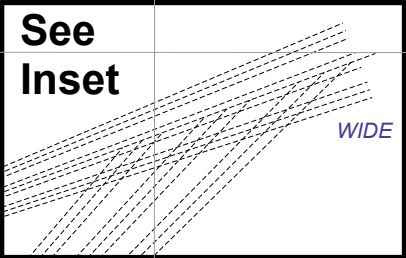
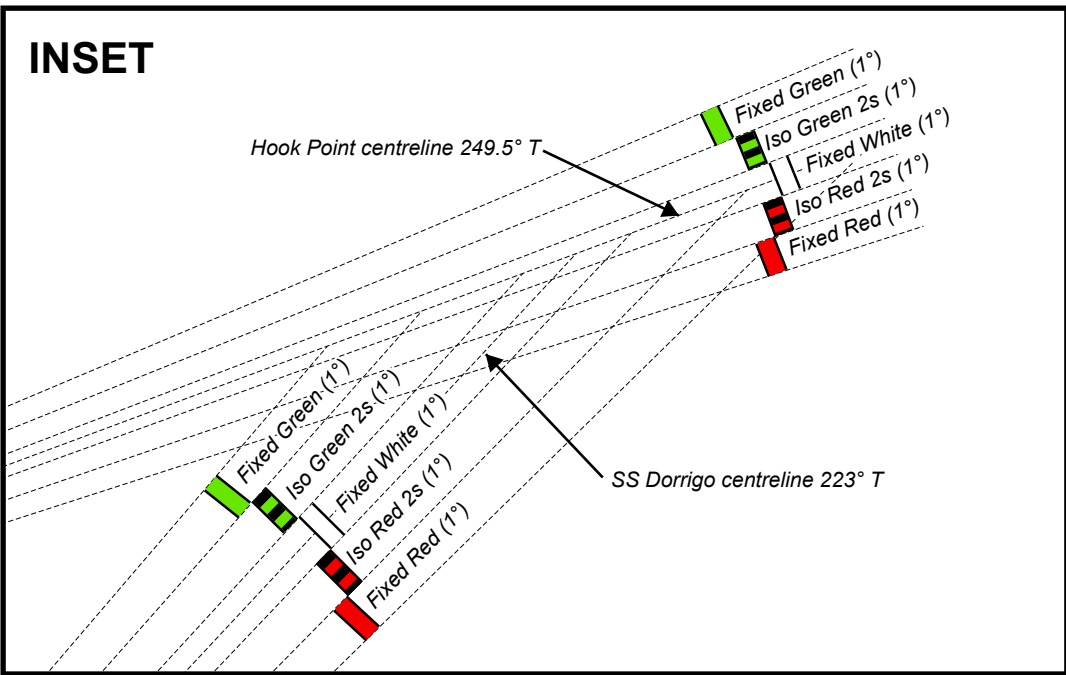
25°45'S

25°46'S

25°47'S

25°48'S

25°49'S



To be used with appropriate NTM
 © The State of Queensland 2025
 Transport and Main Roads



Prepared 6 February 2025
 Maritime Safety Queensland
 Port Operations and VTS - Spatial Services

QUEENSLAND NOTICE TO MARINERS
 Issued by Maritime Safety Queensland

**Change to directional lights sectors
 at Inskip Point and Hook Point
 WIDE BAY BAR**

QNTM updates also available
 from www.msq.qld.gov.au
 Datum: GDA2020 horizontal. LAT vertical
 Map projection: UTM (MGA zone 56)

Map S11-696-1



Queensland Government