

PORT OF BUNDABERG

VESSEL :

Pilotage Plan - Departure / Removal

Pilot		Pilot Card	yes	no
Date	Standby @	Defects	yes	no

Passage		TUG NAME	Bollard Pull	Position
Drafts in metres	FWD	AFT		

Tide	Time	Height	Range

UKC Calculation

Area	
Depth	
+ Tide	

Checklist : Departure / Removal

- Security Level
- Main Engine
- Steering
- Thruster? kW / BHP
- Whistle
- Gyro
- Both anchors cleared and ready for use?
- Doppler / GPS / EM Log
- Radars
- Aldis Lamp
- Constrained by draught
- Charts, ECDIS and publications
- Special Features?



Avail Depth	
- Draft	
SUKC	
(Minimum UKC is 0.9m)	

The Master and the Pilot certify that the Pilotage Plan has been agreed and discussed with the bridge team.

Date / Time _____
 Pilot _____
 Master _____

- Bundaberg Harbour Control listens continuously on VHF Ch 13 & 16.
- Should any emergency arise, call Bundaberg Harbour Control on VHF Ch13 for assistance.
- The bridge team must monitor vessels position as required by Maritime Safety Queensland and international regulations.

Departure Diagram

Alterations Outbound

Approx W/O position	New Crs	Distance
Clear of Oil or Sugar Wharf	348° T	0.2'
Bcn #20 transit with Bcn #22	020° T	0.2'
Bcn #22 transit with Inner Reach FDIR	049° T	0.4'
Bcn #18 transit with Middle Reach FDMR	072° T	0.6'
Bcn #16 abeam	081° T	0.3'
Bow approaching Bcn #14	090° T	4.8'

wharf

PORT OF BUNDABERG

VESSEL :

Pilotage Plan - Arrival

Pilot		Pilot Card	yes	no
Date	Standby @	Defects	yes	no

Passage		TUG NAME	Bollard Pull	Position
Drafts in metres	FWD	AFT		

Tide	Time	Height	Range

UKC Calculation

Area	
Depth	
+ Tide	

Checklist : Arrival

- Security Level
- Main Engine
- Steering
- Thruster? kW / BHP
- Whistle
- Gyro
- Both anchors cleared and ready for use?
- Doppler / GPS / EM Log
- Radars
- Aldis Lamp
- Constrained by draught
- Charts, ECDIS and publications
- Special Features?



Avail Depth	
- Draft	
SUKC	
(Minimum UKC is 0.9m)	

The Master and the Pilot certify that the Pilotage Plan has been agreed and discussed with the bridge team.

Date / Time _____
 Pilot _____
 Master _____

- Bundaberg Harbour Control listens continuously on VHF Ch 13 & 16.
- Should any emergency arise, call Bundaberg Harbour Control on VHF Ch13 for assistance.
- The bridge team must monitor vessels position as required by Maritime Safety Queensland and international regulations.

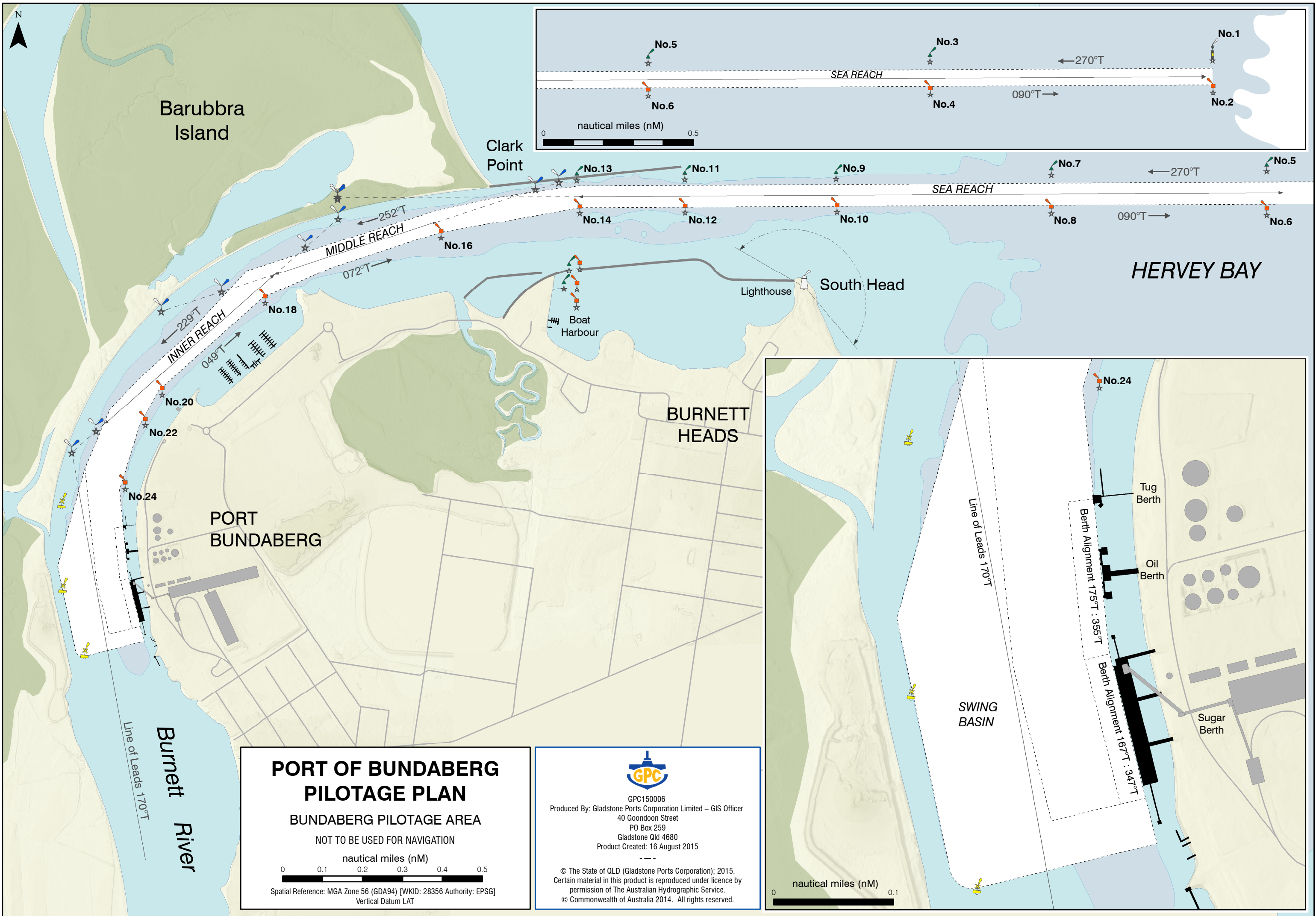
Arrival Diagram

Alterations Inbound

Approx W/O position	New Crs	Distance
Entrance Beacons	270° T	3.5'
Bcn #12 clear	261° T	0.6'
Bow approaching Bcn #16	252° T	0.3'
Sea Reach Leads abeam	229° T	0.5'
Bcn #20 transit with Bcn #22	218° T	0.2'
Bow approaching Bcn #22	200° T	0.2'
Bow approaching Bcn #24	170° T	0.3'

Courses as required to Oil or Sugar Berth

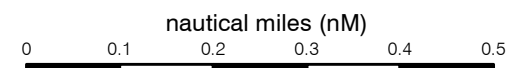
wharf



PORT OF BUNDABERG PILOTAGE PLAN

BUNDABERG PILOTAGE AREA

NOT TO BE USED FOR NAVIGATION



Spatial Reference: MGA Zone 56 (GDA94) [WKID: 28356 Authority: EPSG]
Vertical Datum LAT



GPC150006
Produced By: Gladstone Ports Corporation Limited – GIS Officer
40 Goondoon Street
PO Box 259
Gladstone Qld 4680
Product Created: 16 August 2015

© The State of QLD (Gladstone Ports Corporation); 2015.
Certain material in this product is reproduced under licence by permission of The Australian Hydrographic Service.
© Commonwealth of Australia 2014. All rights reserved.

