



**Beach Protection  
Authority  
Queensland**

COASTAL OBSERVATION PROGRAMME - ENGINEERING (COPE)

**GREEN ISLAND - CITY OF CAIRNS 1985**



**HARBOURS MARINE**

*Caring for our coast*

**COASTAL OBSERVATION PROGRAMME - ENGINEERING (COPE)**

**GREEN ISLAND - CITY OF CAIRNS**

**FOR THE YEAR 1985**

**REPORT NO. B.P.A. 20**

**Beach Protection Authority**

**October 1989**

This report has been prepared by the Coastal Management Program of the Department of Harbours and Marine on behalf of the Beach Protection Authority.

All reasonable care and attention has been exercised in the collection, processing and compilation of the wave data included in this report. However, the accuracy and reliability of this information is not guaranteed in any way by the Beach Protection Authority and the Authority accepts no responsibility for the use of this information in any way whatsoever.

**DOCUMENTATION PAGE**

**REPORT NO.:-** B.P.A. 20

**TITLE:-** Report - Coastal Observation Programme - Engineering (COPE),  
Green Island - City of Cairns 1985.

**DATE:-** October 1989

**TYPE OF REPORT:-** Technical Memorandum

**PREPARED BY:-** Coastal Management Program of the  
Department of Harbours and Marine on behalf  
of the Beach Protection Authority.

**ISSUING ORGANISATION:-** Beach Protection Authority  
G.P.O. BOX 2595  
BRISBANE QLD 4001  
AUSTRALIA

**DISTRIBUTION:-** Public Distribution

**ABSTRACT:-**

This report provides a summary of primary analyses of COPE data on currents, waves and beach processes observed at Green Island in the City of Cairns. The data was recorded by volunteer observers during the period January 1985 to December 1985.

## CONTENTS

	Page
1.0 INTRODUCTION	1
1.1 The Programme	1
1.2 Site Selection	1
1.3 Instrumentation	1
1.4 Observers	1
1.5 Accuracy	1
2.0 DATA	2
3.1 General	2
3.2 Waves	2
3.3 Longshore Current	3
3.0 ATTACHMENTS	
Tabulated data for stations A, B, C and D.	

## **1.0 INTRODUCTION**

### **1.1 The Programme**

The Beach Protection Authority requires basic data on the behaviour of Queensland's beaches in order to provide well founded advice on coastal management to Local Authorities. The COPE project aims to collect information on wind, waves and beach behaviour in areas where extensive investigations are not practical and where otherwise little or no data exist.

The project is based on the recruitment of volunteer observers who are prepared to record a series of basic parameters once or twice daily for at least a three year period.

### **1.2 Site Selection**

In selecting a site for a COPE station, consideration is given to:-

- (a) the general shoreline configuration and the possibility of extrapolation of data to other adjacent beaches;
- (b) the distribution of stations along Queensland's coastline;
- (c) the need to correlate the COPE data with planned or existing data collection programmes.

### **1.3 Instrumentation**

The COPE observers are supplied with a basic kit of recording instruments including:-

- 30 metre tape, wind meter, stop watch, 2.0 metre measuring sticks, recording forms and fluorescent dye.

### **1.4 Observers**

The majority of COPE observers are volunteers, who may be local business people, local residents or school children. Some stations are operated by Government and Local Authority employees who carry out the observations as part of their official duties.

### **1.5 Accuracy**

Individual observers differ in their subjective assessment of the various parameters recorded as part of the COPE programme. Wave parameters such as type, height, and angle of approach together with surf zone width and the location of the vegetation line all require visual assessment, the accuracy of which will vary from observer to observer and from recording to recording.

Although the Authority is confident that all observers make their observations to the best of their ability and accepts these observations without adjustment, the existence of random and non-random errors in the recorded data is to be expected.

Problems associated with the use of data containing these errors are minimised in two ways. Firstly, regular visits are made to the COPE stations by the Authority's COPE Field Officer to provide a check on any bias introduced into the recordings by incorrect observation procedures. Secondly, it has been found that, with a large number of observations taken on a regular basis, a reasonable assessment can be made of the average climatologies of the observed parameters provided the observation errors are random. A minimum recording period of three years has been adopted for the analysis and publication of the data. Five day moving averages are applied to observations of the various beach width and foreshore slope parameters to smooth out random errors.

For these reasons, the Authority is of the opinion that published COPE data can be used with confidence provided the above inherent limitations are recognised.

### 3.0 DATA

#### 3.1 General

COPE data for this station for the one year period January 1985 to December 1985 is presented on the attached tables. A brief description of each of the observed parameters is given below.

#### 3.2 Waves

The average and maximum breaker height (trough to crest) is usually estimated to the nearest 0.1 metre. From experience the estimate of average breaker height has been found to be comparable with the equivalent deep water significant wave height.

The observers estimate the wave period by recording the time taken for eleven wave crests (the duration of 10 waves) to pass a point.

Wave direction was recorded in degrees of a compass from March 1986. The direction recorded was then converted to a sector (see following paragraph regarding sector system).

The wave direction is estimated as one of five direction sectors indicating the angle to the shoreline alignment from which the waves are approaching the beach. These sectors have been selected as:-

Sector 1	-	0°	to	60°
Sector 2	-	61°	to	85°
Sector 3	-	86°	to	95°
Sector 4	-	96°	to	120°
Sector 5	-	121°	to	180°

Statistical representations of the observed wave data include:-

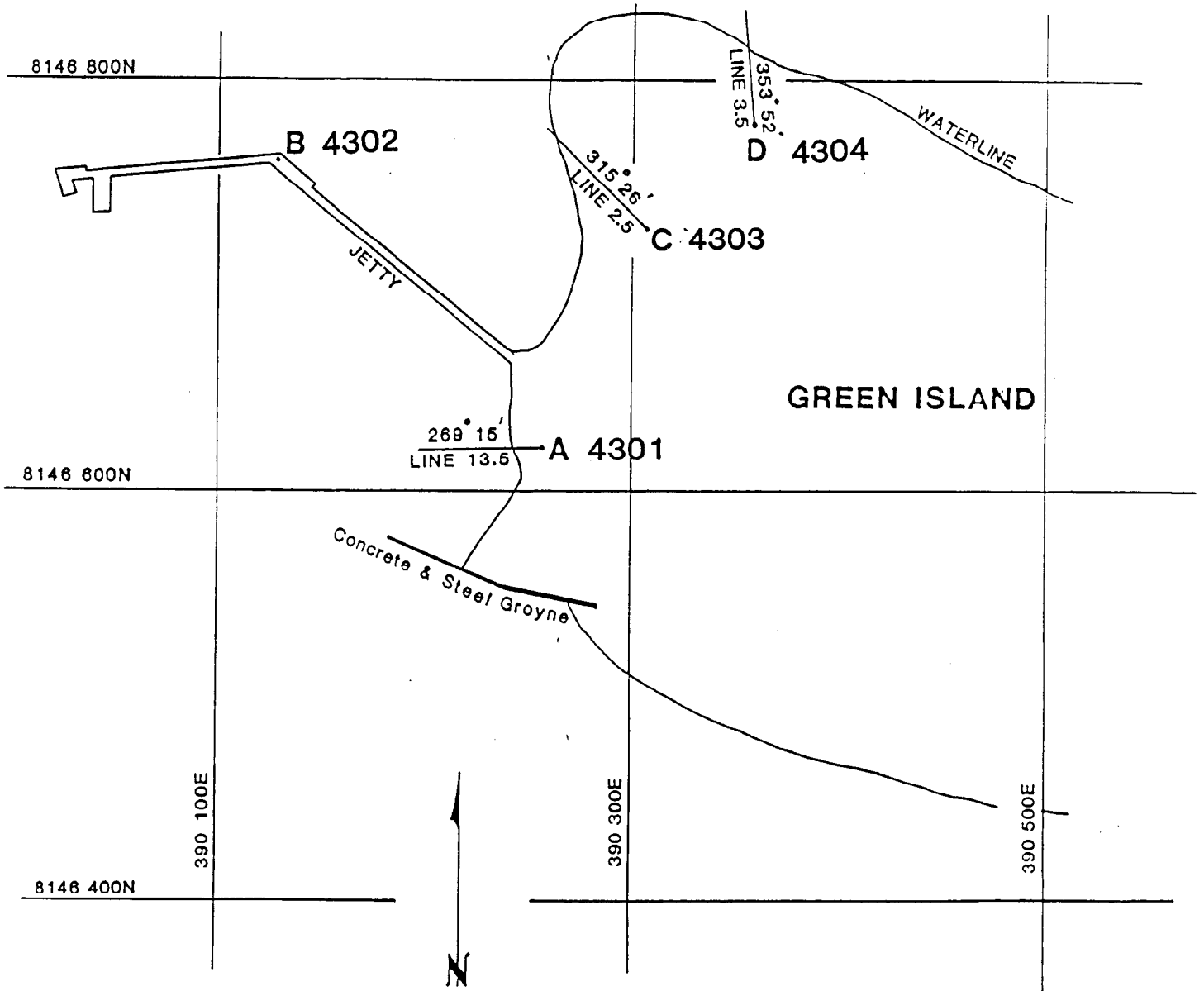
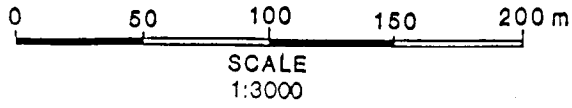
- (a) tabulation of the occurrence of various wave heights, period, types and directions

### 3.3 Longshore Currents

The observer measured the distance parallel to the shoreline that a dye patch in the surf zone moved in one minute. Current direction is either upcoast or downcoast, upcoast being to the left when facing the sea from the beach.

The readings are converted to a velocity which is plotted on a daily basis. Mean upcoast and downcoast components and the overall annual means are also presented.





Beach Protection Authority

LOCATION OF  
THE FOUR C.O.P.E. SITES



SITE A

BEACH PROTECTION AUTHORITY - COPECHECK OUTPUT

DATA READ FROM :

GREEN ISLAND SITE A CAIRNS CITY SITE NUMBER : 4301 OBSERVER CODE : 0

DATE DY MH YR	WAVE PERIOD	WAVE HT	WAVE DIRN	WAVE TYPE	SURF ZONE	OFFS BAR	WIND SPEED	WIND DIRN	WIND STATE OF TIDE	BERM ELEV	DIST TO BERM	DIST TO VEG	FORE- SHORE SLOPE	CURRENT DIRN	SPEED	SAND/S OR PHOTO	REMARK
3 1 85	0700	2.2	0.1	30	.	.	.	.	HIGH S	.	.	.	.	L	4	.	.
6 1 85	0700	3.6	0.1	30	.	.	.	.	HIGH R	.	.	.	.	L	2	.	.
7 1 85	0700	2.5	0.1	350	.	.	.	.	3/4 R	.	.	.	.	L	1	.	.
8 1 85	0700	2.6	0.1	340	.	.	.	.	3/4 R	.	.	.	.	L	5	.	.
9 1 85	0700	2.8	0.1	350	.	.	.	.	HALF R	.	.	.	.	L	1	.	.
10 1 85	0700	2.8	0.1	40	.	.	.	.	1/4 R	.	.	.	.	L	5	.	.
13 1 85	0700	2.0	0.1	50	.	.	.	.	LOW F	.	.	.	.	L	5	.	.
14 1 85	0700	4.4	0.2	45	.	.	.	.	3/4 F	.	.	.	.	L	6	.	.
16 1 85	0700	4.0	0.2	320	.	.	.	.	HIGH F	.	.	.	.	R	1	.	.
17 1 85	0700	3.5	0.5	310	.	.	.	.	HIGH S	.	.	.	.	R	1	.	.
18 1 85	0700	2.9	0.1	.	.	.	.	.	HIGH R	.	.	.	.	R	3	.	.
19 1 85	0700	1.7	0.2	310	.	.	.	.	3/4 R	.	.	.	.	L	2	.	.
21 1 85	0700	2.3	0.1	50	.	.	.	.	3/4 R	.	.	.	.	L	2	.	.
22 1 85	0700	1.8	0.1	355	.	.	.	.	HALF R	.	.	.	.	R	1	.	.
23 1 85	0700	1.5	0.1	45	.	.	.	.	HALF R	.	.	.	.	L	2	.	.
24 1 85	0700	1.9	0.1	45	.	.	.	.	HALF R	.	.	.	.	L	4	.	.
28 1 85	0700	1.4	0.1	20	.	.	.	.	1/4 R	.	.	.	.	R	5	.	.
29 1 85	0700	3.7	0.1	40	.	.	.	.	1/4 F	.	.	.	.	R	1	.	.
30 1 85	0700	2.4	0.1	350	.	.	.	.	3/4 F	.	.	.	.	L	2	.	.
31 1 85	0700	1.9	0.1	345	.	.	.	.	HIGH F	.	.	.	.	R	4	.	.
1 2 85	0700	2.6	0.1	340	.	.	.	.	HIGH F	.	.	.	.	R	4	.	.
2 2 85	0700	4.9	0.1	340	.	.	.	.	HIGH R	.	.	.	.	R	1	.	.
3 2 85	0700	5.3	0.1	335	.	.	.	.	HIGH R	.	.	.	.	R	1	.	.
4 2 85	0700	10.1	0.1	325	.	.	.	.	3/4 R	.	.	.	.	R	1	.	.

BEACH PROTECTION AUTHORITY - COPECHECK OUTPUT

GREEN ISLAND SITE A CAIRNS CITY										SITE NUMBER : 4301 OBSERVER CODE : 0				DATA READ FROM :		
DATE DY MH YR	WAVE PERIOD HT	WAVE WAVE DIRN	WAVE TYPE	SURF ZONE WIDTH	OFFS BAR	WIND SPEED	WIND DIRN	WIND STATE OF TIDE	BERM ELEV	DIST TO BERM	DIST TO VEG	FORE- SHORE SLOPE	CURRENT SPEED	DIURN	SAND/S OR PHOTO	REMARK
6 2 85	0700	5.4	0.1	330	*	*	*	HALF R	*	*	*	*	1	R	*	*
9 2 85	0700	2.8	0.1	25	*	*	*	1/4 R	*	*	*	*	2	R	*	*
11 2 85	0700	4.7	0.1	40	*	*	*	LOW R	*	*	*	*	1	R	*	*
12 2 85	0700	4.8	0.1	345	*	*	*	HALF F	*	*	*	*	3	R	*	*
16 2 85	0700	3.0	0.1	325	*	*	*	HIGH R	*	*	*	*	1	R	*	*
17 2 85	0700	2.7	0.1	325	*	*	*	HIGH R	*	*	*	*	5	R	*	*
18 2 85	0700	3.4	0.1	335	*	*	*	3/4 R	*	*	*	*	4	R	*	*
19 2 85	0700	3.5	0.1	340	*	*	*	3/4 R	*	*	*	*	3	R	*	*
20 2 85	0700	4.3	0.1	335	*	*	*	3/4 R	*	*	*	*	2	R	*	*
24 2 85	0700	2.2	0.1	35	*	*	*	HALF R	*	*	*	*	1	L	*	*
25 2 85	0700	2.4	0.1	25	*	*	*	HALF R	*	*	*	*	2	L	*	*
26 2 85	0700	1.8	0.1	25	*	*	*	3/4 R	*	*	*	*	2	L	*	*
27 2 85	0700	2.6	0.1	15	*	*	*	HIGH F	*	*	*	*	1	L	*	*
2 3 85	0700	5.1	0.1	35	*	*	*	HIGH F	*	*	*	*	0	O	*	*
3 3 85	0700	2.3	0.1	350	*	*	*	HIGH F	*	*	*	*	1	R	*	*
4 3 85	0700	2.8	0.1	345	*	*	*	HIGH R	*	*	*	*	0	-	*	*
5 3 85	0700	2.4	0.1	355	*	*	*	HIGH R	*	*	*	*	1	R	*	*
6 3 85	0700	2.6	0.1	5	*	*	*	3/4 R	*	*	*	*	5	L	*	*
9 3 85	0700	3.3	0.1	330	*	*	*	HALF R	*	*	*	*	1	R	*	*
10 3 85	0700	3.0	0.1	20	*	*	*	1/4 R	*	*	*	*	7	L	*	*
11 3 85	0700	2.3	0.1	45	*	*	*	1/4 R	*	*	*	*	2	L	*	*
12 3 85	0700	3.0	0.1	345	*	*	*	1/4 F	*	*	*	*	1	R	*	*
13 3 85	0700	2.8	0.1	345	*	*	*	3/4 F	*	*	*	*	5	R	*	*
16 3 85	0700	3.7	0.1	330	*	*	*	HIGH F	*	*	*	*	1	R	*	*

BEACH PROTECTION AUTHORITY - COPECHECK OUTPUT

DATA READ FROM :

GREEN ISLAND SITE A CAIRNS CITY

SITE NUMBER : 4301 OBSERVER CODE : 0

DATE DY MH YR	WAVE PERIOD HT	WAVE HT	WAVE DIRN	WAVE TYPE	SURF ZONE	OFFS BAR	WIND SPEED	WIND DIRN	STATE OF TIDE	BERM ELEV	DIST TO BERM	DIST TO VEG	FORE- SHORE SLOPE	CURRENT SPEED	DIRN	SAND/S OR PHOTO	REMARK
23 3 85	0700	4.3	0.1	30	*	*	*	*	3/4 R	*	*	*	*	0	O	*	
24 3 85	0700	3.8	0.1	335	*	*	*	*	HALF R	*	*	*	*	4	R	*	
25 3 85	0700	3.9	0.1	340	*	*	*	*	HALF R	*	*	*	*	2	R	*	
26 3 85	0700	3.4	0.1	340	*	*	*	*	3/4 R	*	*	*	*	0	O	*	
27 3 85	0700	5.6	0.1	340	*	*	*	*	3/4 R	*	*	*	*	0	O	*	
2 4 85	0700	2.8	0.1	315	*	*	*	*	HIGH F	*	*	*	*	1	R	*	
3 4 85	0700	1.3	0.2	320	*	*	*	*	HIGH F	*	*	*	*	5	R	*	
4 4 85	0700	1.6	0.1	345	*	*	*	*	3/4 R	*	*	*	*	2	R	*	
5 4 85	0700	2.5	0.1	350	*	*	*	*	3/4 R	*	*	*	*	3	R	*	
6 4 85	0700	2.8	0.1	355	*	*	*	*	3/4 R	*	*	*	*	3	R	*	
8 4 85	0700	3.7	0.3	50	*	*	*	*	HALF R	*	*	*	*	2	R	*	
9 4 85	0700	5.0	0.3	25	*	*	*	*	1/4 R	*	*	*	*	4	R	*	
12 4 85	0700	3.6	0.2	340	*	*	*	*	HALF F	*	*	*	*	4	R	*	
17 4 85	0700	1.9	0.2	355	*	*	*	*	HIGH S	*	*	*	*	1	L	*	
18 4 85	0700	1.5	0.2	355	*	*	*	*	3/4 R	*	*	*	*	0	O	*	
19 4 85	0700	2.8	0.2	350	*	*	*	*	3/4 R	*	*	*	*	5	R	*	
23 4 85	0700	4.4	0.2	25	*	*	*	*	HALF R	*	*	*	*	5	R	*	
1 5 85	0700	2.6	0.2	320	*	*	*	*	HIGH F	*	*	*	*	3	R	*	
2 5 85	0700	3.7	0.5	315	*	*	*	*	HIGH S	*	*	*	*	5	R	*	
3 5 85	0700	1.4	0.2	325	*	*	*	*	HIGH R	*	*	*	*	6	R	*	

BEACH PROTECTION AUTHORITY - COPECHECK OUTPUT

DATA READ FROM :

SITE NUMBER : 4301 OBSERVER CODE : 0

GREEN ISLAND SITE A CAIRNS CITY

DATE DY MH YR	TIME	WAVE PERIOD	WAVE HT	WAVE DIRN	WAVE TYPE	SURF ZONE WIDTH	OFFS BAR	WIND SPEED	WIND DIRN	STATE OF TIDE	BERM ELEV	DIST TO BERM	DIST TO VEG	FORE- SHORE SLOPE	CURRENT SPEED	DIRN	SAND/S OR PHOTO	REMARK
7	5 85	0730	4.0	0.1	345	*	*	*	*	HALF R	*	*	*	*	4	R	*	*
8	5 85	0730	3.0	0.1	15	*	*	*	*	1/4 R	*	*	*	*	2	R	*	*
10	5 85	0730	4.6	0.1	20	*	*	*	*	HALF F	*	*	*	*	4	R	*	*
14	5 85	0730	5.5	0.4	345	*	*	*	*	1/4 F	*	*	*	*	1	L	*	*
15	5 85	0730	3.6	0.2	355	*	*	*	*	HIGH F	*	*	*	*	7	R	*	*
16	5 85	0730	10.2	0.2	330	*	*	*	*	HIGH F	*	*	*	*	4	R	*	*
17	5 85	0730	3.7	1.6	330	*	*	*	*	HIGH S	*	*	*	*	13	R	*	*
18	5 85	0730	4.4	0.3	340	*	*	*	*	HIGH F	*	*	*	*	9	R	*	*
19	5 85	0730	3.6	0.2	335	*	*	*	*	HIGH F	*	*	*	*	4	R	*	*
23	5 85	0730	2.7	0.2	20	*	*	*	*	HALF R	*	*	*	*	6	R	*	*
24	5 85	0730	4.1	0.2	40	*	*	*	*	HIGH F	*	*	*	*	7	R	*	*
26	5 85	0730	4.2	0.3	345	*	*	*	*	3/4 F	*	*	*	*	4	R	*	*
29	5 85	0730	3.3	0.2	335	*	*	*	*	HALF F	*	*	*	*	7	R	*	*
30	5 85	0730	4.1	0.2	335	*	*	*	*	HALF F	*	*	*	*	4	R	*	*
31	5 85	0730	5.2	0.2	335	*	*	*	*	1/4 F	*	*	*	*	2	R	*	*
1	6 85	0730	2.5	0.2	335	*	*	*	*	1/4 S	*	*	*	*	9	R	*	*
6	6 85	0730	2.2	0.1	30	*	*	*	*	HALF R	*	*	*	*	10	R	*	*
7	6 85	0730	5.7	0.1	25	*	*	*	*	1/4 F	*	*	*	*	10	R	*	*
8	6 85	0730	0.8	0.1	20	*	*	*	*	3/4 F	*	*	*	*	10	R	*	*
12	6 85	0730	2.8	0.2	340	*	*	*	*	HALF F	*	*	*	*	5	R	*	*
13	6 85	0730	1.9	0.1	350	*	*	*	*	HALF F	*	*	*	*	8	R	*	*
14	6 85	0730	3.4	0.1	340	*	*	*	*	LOW F	*	*	*	*	7	R	*	*

BEACH PROTECTION AUTHORITY - COPECHECK OUTPUT

DATA READ FROM :

SITE NUMBER : 4301 OBSERVER CODE : 0

GREEN ISLAND SITE A CAIRNS CITY

DATE DY MH YR	WAVE PERIOD HT	WAVE HT	WAVE DIRN	WAVE TYPE	SURF ZONE	OFFS BAR	WIND SPEED	WIND DIRN	STATE OF TIDE	BERM ELEV	DIST TO BERM	DIST TO VEG	FORE- SHORE SLOPE	CURRENT SPEED	DIRN	SAND/S OR PHOTO	REMARK
15 6 85	0730	3.6	0.3	345	*	*	*	*	LOW F	*	*	*	*	9	R	*	
19 6 85	0730	3.0	0.2	340	*	*	*	*	HIGH R	*	*	*	*	8	R	*	
20 6 85	0730	3.4	0.2	25	*	*	*	*	3/4 R	*	*	*	*	5	R	*	
21 6 85	0730	3.7	0.2	50	*	*	*	*	3/4 R	*	*	*	*	7	R	*	
22 6 85	0730	3.6	0.2	30	*	*	*	*	1/4 R	*	*	*	*	5	R	*	
23 6 85	0730	3.1	0.1	15	*	*	*	*	LOW S	*	*	*	*	2	R	*	
25 6 85	0730	3.8	0.1	15	*	*	*	*	3/4 F	*	*	*	*	2	R	*	
26 6 85	0730	2.9	0.2	15	*	*	*	*	HALF F	*	*	*	*	7	R	*	
27 6 85	0730	3.4	0.3	330	*	*	*	*	1/4 F	*	*	*	*	4	R	*	
28 6 85	0730	3.1	0.3	330	*	*	*	*	1/4 F	*	*	*	*	3	R	*	
29 6 85	0730	4.2	0.4	340	*	*	*	*	HIGH F	*	*	*	*	5	R	*	
30 6 85	0730	3.7	0.5	335	*	*	*	*	HIGH F	*	*	*	*	9	R	*	
3 7 85	0730	3.1	0.3	345	*	*	*	*	3/4 R	*	*	*	*	5	R	*	
7 7 85	0730	2.4	0.1	20	*	*	*	*	LOW S	*	*	*	*	6	R	*	
10 7 85	0730	2.9	0.2	15	*	*	*	*	HALF F	*	*	*	*	3	R	*	
11 7 85	0730	3.0	0.1	15	*	*	*	*	HALF F	*	*	*	*	6	R	*	
12 7 85	0730	1.8	0.1	15	*	*	*	*	1/4 F	*	*	*	*	5	R	*	
13 7 85	0730	2.4	0.1	15	*	*	*	*	1/4 F	*	*	*	*	2	R	*	
14 7 85	0730	3.2	0.1	5	*	*	*	*	LOW F	*	*	*	*	5	R	*	
18 7 85	0730	3.4	0.2	340	*	*	*	*	3/4 R	*	*	*	*	9	R	*	
19 7 85	0715	2.9	0.2	20	*	*	*	*	3/4 R	*	*	*	*	3	R	*	
20 7 85	0710	3.9	0.2	30	*	*	*	*	HALF R	*	*	*	*	5	R	*	
22 7 85	0720	2.9	0.1	40	*	*	*	*	LOW R	*	*	*	*	0	O	*	
23 7 85	0730	3.0	0.1	30	*	*	*	*	LOW R	*	*	*	*	4	R	*	
27 7 85	0735	3.7	0.1	30	*	*	*	*	1/4 F	*	*	*	*	1	R	*	
28 7 85	0740	3.1	0.1	10	*	*	*	*	1/4 F	*	*	*	*	5	R	*	
31 7 85	0715	2.3	0.1	350	*	*	*	*	3/4 R	*	*	*	*	2	R	*	

BEACH PROTECTION AUTHORITY - COPECHECK OUTPUT

GREEN ISLAND SITE A CAIRNS CITY										SITE NUMBER : 4301			OBSERVER CODE : 0		DATA READ FROM :			
DATE	TIME	WAVE PERIOD	WAVE HT	WAVE DIRN	WAVE TYPE	SURF ZONE WIDTH	OFFS BAR	WIND SPEED	WIND DIRN	WIND STATE OF TIDE	BERM ELEV	DIST TO BERM	DIST TO VEG	FORE-SHORE SLOPE	CURRENT SPEED	DIRN	SAND/S OR PHOTO	REMARK
1	8 85	0730	2.9	0.1	0	.	.	.	.	HALF R	.	.	.	.	1	L	.	.
2	8 85	0730	3.5	0.3	350	.	.	.	.	HALF R	.	.	.	.	2	L	.	.
3	8 85	0730	3.2	0.2	30	.	.	.	.	HALF R	.	.	.	.	1	L	.	.
4	8 85	0725	2.6	0.1	20	.	.	.	.	HALF R	.	.	.	.	8	L	.	.
5	8 85	0745	1.4	0.1	30	.	.	.	.	1/4 R	.	.	.	.	9	L	.	.
7	8 85	0725	1.7	0.1	40	.	.	.	.	LOW R	.	.	.	.	2	L	.	.
8	8 85	0730	2.4	0.1	40	.	.	.	.	1/4 F	.	.	.	.	4	R	.	.
9	8 85	0735	2.5	0.1	40	.	.	.	.	HALF F	.	.	.	.	2	R	.	.
10	8 85	0730	2.2	0.1	10	.	.	.	.	HALF F	.	.	.	.	3	R	.	.
11	8 85	0730	2.0	0.1	340	.	.	.	.	HALF F	.	.	.	.	4	R	.	.
12	8 85	0751	3.3	0.1	45	.	.	.	.	3/4 F	.	.	.	.	2	L	.	.
14	8 85	0730	2.6	0.1	20	.	.	.	.	3/4 R	.	.	.	.	2	R	.	.
15	8 85	0730	4.0	0.1	50	.	.	.	.	3/4 R	.	.	.	.	0	O	.	.
16	8 85	0730	3.6	0.1	40	.	.	.	.	HALF R	.	.	.	.	0	O	.	.
17	8 85	0730	2.2	0.1	30	.	.	.	.	1/4 R	.	.	.	.	0	O	.	.
20	8 85	0730	3.9	0.1	50	.	.	.	.	LOW F	.	.	.	.	0	O	.	.
21	8 85	0730	2.7	0.1	70	.	.	.	.	LOW S	.	.	.	.	1	O	.	.
22	8 85	0730	2.6	0.1	30	.	.	.	.	3/4 F	.	.	.	.	1	L	.	.
23	8 85	0730	5.4	0.1	40	.	.	.	.	HALF F	.	.	.	.	0	O	.	.
24	8 85	0730	2.1	0.1	0	.	.	.	.	HALF F	.	.	.	.	3	R	.	.
27	8 85	0730	2.1	0.1	340	.	.	.	.	HIGH F	.	.	.	.	1	L	.	.
28	8 85	0730	3.4	0.1	340	.	.	.	.	3/4 R	.	.	.	.	1	R	.	.
29	8 85	0730	2.5	0.1	350	.	.	.	.	3/4 R	.	.	.	.	5	R	.	.
30	8 85	0730	3.5	0.1	350	.	.	.	.	HALF R	.	.	.	.	1	L	.	.
1	9 85	0730	2.3	0.1	0	.	.	.	.	HALF R	.	.	.	.	1	R	.	.
2	9 85	0730	2.4	0.1	10	.	.	.	.	3/4 R	.	.	.	.	2	R	.	.
3	9 85	0730	2.1	0.1	310	.	.	.	.	3/4 R	.	.	.	.	1	R	.	.
4	9 85	0730	2.7	0.1	30	.	.	.	.	HALF R	.	.	.	.	2	R	.	.
6	9 85	0730	3.0	0.1	40	.	.	.	.	1/4 R	.	.	.	.	0	O	.	.
7	9 85	0730	3.3	0.2	40	.	.	.	.	HALF F	.	.	.	.	1	R	.	.



BEACH PROTECTION AUTHORITY - COPECHECK OUTPUT

GREEN ISLAND SITE A CAIRNS CITY

SITE NUMBER : 4301 OBSERVER CODE : 0

DATA READ FROM :

DATE DY MH YR	WAVE PERIOD HT	WAVE HT	WAVE DIRN	WAVE TYPE	SURF ZONE	OFFS BAR	WIND SPEED	WIND DIRN	STATE OF TIDE	BERM ELEV	DIST TO BERM	DIST TO VEG	DIST TO SHORE	FORE- SHORE SLOPE	CURRENT SPEED	DIRN	SAND/S OR PHOTO	REMARK
8 9 85	0730	3.8	0.1	20	*	*	*	*	3/4 F	*	*	*	*	*	2	L	*	
11 9 85	0730	2.1	0.1	350	*	*	*	*	3/4 F	*	*	*	*	*	4	R	*	
12 9 85	0730	2.4	0.1	0	*	*	*	*	HIGH F	*	*	*	*	*	6	R	*	
13 9 85	0730	2.1	0.1	0	*	*	*	*	3/4 R	*	*	*	*	*	0	O	*	
14 9 85	0730	1.7	0.1	0	*	*	*	*	3/4 R	*	*	*	*	*	6	R	*	
15 9 85	0730	3.5	0.1	340	*	*	*	*	3/4 R	*	*	*	*	*	4	R	*	
16 9 85	0730	2.1	0.3	10	*	*	*	*	HALF F	*	*	*	*	*	3	R	*	
18 9 85	0730	2.3	0.1	20	*	*	*	*	HALF R	*	*	*	*	*	3	R	*	
19 9 85	0730	0.0	0.0	*	*	*	*	*	HALF R	*	*	*	*	*	0	O	*	
20 9 85	0730	3.3	0.1	0	*	*	*	*	HIGH R	*	*	*	*	*	0	O	*	
21 9 85	0730	1.8	0.1	10	*	*	*	*	3/4 F	*	*	*	*	*	0	O	*	
23 9 85	0715	4.5	0.1	45	*	*	*	*	HALF F	*	*	*	*	*	1	L	*	
25 9 85	0730	2.3	0.1	10	*	*	*	*	HIGH F	*	*	*	*	*	1	L	*	
26 9 85	0730	2.2	0.1	10	*	*	*	*	HIGH F	*	*	*	*	*	3	L	*	
27 9 85	0730	2.5	0.1	0	*	*	*	*	3/4 R	*	*	*	*	*	0	O	*	
28 9 85	0730	2.4	0.1	340	*	*	*	*	3/4 R	*	*	*	*	*	1	R	*	
29 9 85	0730	4.1	0.1	340	*	*	*	*	3/4 R	*	*	*	*	*	6	R	*	
2 10 85	0730	10.4	0.1	350	*	*	*	*	3/4 R	*	*	*	*	*	1	L	*	
3 10 85	0730	4.2	0.1	350	*	*	*	*	HALF R	*	*	*	*	*	0	O	*	
4 10 85	0745	4.2	0.1	40	*	*	*	*	HALF R	*	*	*	*	*	0	O	*	
5 10 85	0730	3.6	0.1	20	*	*	*	*	1/4 R	*	*	*	*	*	0	O	*	
6 10 85	0730	2.8	0.1	10	*	*	*	*	1/4 R	*	*	*	*	*	1	R	*	
7 10 85	0730	3.4	0.1	350	*	*	*	*	HALF F	*	*	*	*	*	0	O	*	
9 10 85	0700	2.2	0.1	350	*	*	*	*	HIGH F	*	*	*	*	*	3	R	*	
10 10 85	0730	3.4	0.1	0	*	*	*	*	3/4 F	*	*	*	*	*	0	O	*	
11 10 85	0730	4.6	0.1	0	*	*	*	*	HIGH F	*	*	*	*	*	1	R	*	
12 10 85	0715	1.9	0.1	40	*	*	*	*	HIGH F	*	*	*	*	*	1	R	*	
14 10 85	0715	2.4	0.1	30	*	*	*	*	3/4 R	*	*	*	*	*	1	R	*	
15 10 85	0730	2.9	0.1	50	*	*	*	*	HALF R	*	*	*	*	*	0	O	*	

BEACH PROTECTION AUTHORITY - COPECHECK OUTPUT

GREEN ISLAND SITE A CAIRNS CITY										SITE NUMBER : 4301 OBSERVER CODE : 0				DATA READ FROM :				
DATE	TIME	WAVE PERIOD	WAVE HT	WAVE DIRN	WAVE TYPE	SURF ZONE WIDTH	OFFS BAR	WIND SPEED	WIND DIRN	STATE OF TIDE	BERM ELEV	DIST TO BERM	DIST TO VEG	FORE-SHORE SLOPE	CURRENT SPEED	DIRN	SAND/S OR PHOTO	REMARK
16 10 85	0730	3.1	0.1	20	*	*	*	*	*	HALF R	*	*	*	*	1	L	*	
17 10 85	0730	3.5	0.1	30	*	*	*	*	*	HALF R	*	*	*	*	1	L	*	
18 10 85	0730	1.2	0.1	50	*	*	*	*	*	HALF R	*	*	*	4	L	*		
19 10 85	0730	2.8	0.1	10	*	*	*	*	*	1/4 R	*	*	*	1	L	*		
20 10 85	0730	2.7	0.1	30	*	*	*	*	*	3/4 F	*	*	*	1	L	*		
21 10 85	0730	1.3	0.1	30	*	*	*	*	*	HALF F	*	*	*	4	L	*		
23 10 85	0730	2.1	0.1	40	*	*	*	*	*	HIGH F	*	*	*	2	L	*		
24 10 85	0730	1.7	0.1	20	*	*	*	*	*	HIGH F	*	*	*	5	L	*		
25 10 85	0730	2.5	0.1	340	*	*	*	*	*	HIGH F	*	*	*	4	R	*		
26 10 85	0730	3.6	0.1	340	*	*	*	*	*	3/4 R	*	*	*	1	R	*		
27 10 85	0730	2.7	0.1	340	*	*	*	*	*	3/4 R	*	*	*	1	L	*		
28 10 85	0730	2.4	0.1	15	*	*	*	*	*	3/4 R	*	*	*	2	L	*		
30 10 85	0730	5.5	0.1	30	*	*	*	*	*	HALF R	*	*	*	1	L	*		
31 10 85	0730	2.9	0.1	20	*	*	*	*	*	HALF R	*	*	*	1	R	*		
1 11 85	0730	3.5	0.1	20	*	*	*	*	*	HALF R	*	*	*	2	R	*		
2 11 85	0730	3.2	0.1	40	*	*	*	*	*	HALF R	*	*	*	0	R	*		
3 11 85	0730	2.6	0.1	20	*	*	*	*	*	HALF R	*	*	*	2	R	*		
4 11 85	0730	3.1	0.1	30	*	*	*	*	*	HALF R	*	*	*	3	R	*		
5 11 85	0730	2.8	0.1	20	*	*	*	*	*	3/4 F	*	*	*	2	R	*		
6 11 85	0730	3.0	0.1	40	*	*	*	*	*	HALF F	*	*	*	3	R	*		
7 11 85	0730	4.2	0.1	30	*	*	*	*	*	HALF F	*	*	*	3	R	*		
8 11 85	0730	3.7	0.1	10	*	*	*	*	*	HALF F	*	*	*	2	R	*		
9 11 85	0730	3.2	0.1	0	*	*	*	*	*	HALF F	*	*	*	3	R	*		
10 11 85	0730	3.1	0.1	10	*	*	*	*	*	HIGH F	*	*	*	3	R	*		
11 11 85	0730	2.9	0.1	350	*	*	*	*	*	3/4 R	*	*	*	3	R	*		
12 11 85	0700	3.6	0.1	340	*	*	*	*	*	3/4 R	*	*	*	5	R	*		
15 11 85	0730	2.5	0.1	20	*	*	*	*	*	HALF R	*	*	*	0	O	*		
16 11 85	0730	2.2	0.1	*	*	*	*	*	*	HALF R	*	*	*	0	O	*		
17 11 85	0730	0.0	0.0	*	*	*	*	*	*	LOW R	*	*	*	0	O	*		
18 11 85	0700	0.9	0.1	40	*	*	*	*	*	3/4 F	*	*	*	1	L	*		
19 11 85	0700	1.4	0.2	40	*	*	*	*	*	HALF F	*	*	*	2	L	*		
20 11 85	0700	1.6	0.1	45	*	*	*	*	*	HALF F	*	*	*	1	L	*		
21 11 85	0700	1.7	0.1	45	*	*	*	*	*	HIGH F	*	*	*	2	L	*		
22 11 85	0700	1.8	0.3	45	*	*	*	*	*	HIGH F	*	*	*	6	L	*		
23 11 85	0700	1.3	0.1	45	*	*	*	*	*	HIGH F	*	*	*	4	L	*		

BEACH PROTECTION AUTHORITY - COPECHECK OUTPUT

DATA READ FROM :

GREEN ISLAND SITE A CAIRNS CITY SITE NUMBER : 4301 OBSERVER CODE : 0

DATE DY MH YR	TIME	WAVE PERIOD	WAVE HT	WAVE DIRN	WAVE TYPE	SURF ZONE	OFFS BAR	WIND SPEED	WIND DIRN	STATE OF TIDE	BERM ELEV	DIST TO BERM	DIST TO VEG	FORE- SHORE SLOPE	CURRENT SPEED	DIRN	SAND/S OR PHOTO	REMARK
25 11 85	0700	1.9	0.1	0	*	*	*	*	*	HIGH F	*	*	*	*	1	R	*	
26 11 85	0700	2.2	0.2	30	*	*	*	*	*	3/4 R	*	*	*	*	3	L	*	
27 11 85	0715	1.6	0.1	350	*	*	*	*	*	HIGH R	*	*	*	*	0	O	*	
28 11 85	0700	1.8	0.1	0	*	*	*	*	*	3/4 R	*	*	*	*	4	L	*	
29 11 85	0700	2.1	0.1	0	*	*	*	*	*	HIGH R	*	*	*	*	0	O	*	
30 11 85	0710	1.5	0.1	355	*	*	*	*	*	HALF R	*	*	*	*	1	L	*	
1 12 85	0700	1.8	0.1	30	*	*	*	*	*	HALF R	*	*	*	*	3	L	*	
2 12 85	0700	1.4	0.1	35	*	*	*	*	*	HALF R	*	*	*	*	1	L	*	
3 12 85	0700	1.7	0.1	35	*	*	*	*	*	1/4 R	*	*	*	*	1	L	*	
4 12 85	0715	1.9	0.1	25	*	*	*	*	*	LOW R	*	*	*	*	1	L	*	
5 12 85	0715	2.0	0.1	30	*	*	*	*	*	1/4 F	*	*	*	*	0	O	*	
6 12 85	0715	2.2	0.1	35	*	*	*	*	*	HALF F	*	*	*	*	1	L	*	
7 12 85	0715	2.1	0.1	30	*	*	*	*	*	3/4 F	*	*	*	*	0	O	*	
9 12 85	0700	3.0	0.1	345	*	*	*	*	*	HIGH R	*	*	*	*	2	R	*	
10 12 85	0715	2.3	0.1	0	*	*	*	*	*	3/4 R	*	*	*	*	2	L	*	
11 12 85	0715	2.1	0.3	0	*	*	*	*	*	3/4 R	*	*	*	*	1	R	*	
17 12 85	0730	1.3	0.1	40	*	*	*	*	*	1/4 R	*	*	*	*	2	L	*	
18 12 85	0730	1.2	0.1	40	*	*	*	*	*	1/4 F	*	*	*	*	5	L	*	
20 12 85	0730	1.9	0.1	50	*	*	*	*	*	3/4 F	*	*	*	*	1	L	*	
21 12 85	0715	2.2	0.1	80	*	*	*	*	*	HIGH F	*	*	*	*	1	L	*	
22 12 85	0715	1.9	0.1	0	*	*	*	*	*	HIGH F	*	*	*	*	2	L	*	
23 12 85	0715	1.7	0.1	5	*	*	*	*	*	HIGH F	*	*	*	*	2	L	*	
24 12 85	0730	1.6	0.1	10	*	*	*	*	*	3/4 R	*	*	*	*	1	L	*	
27 12 85	0715	1.7	0.1	15	*	*	*	*	*	3/4 R	*	*	*	*	0	O	*	
28 12 85	0715	1.8	0.1	20	*	*	*	*	*	3/4 R	*	*	*	*	1	L	*	
29 12 85	0715	1.7	0.1	15	*	*	*	*	*	HALF R	*	*	*	*	1	L	*	
30 12 85	0715	1.8	0.1	20	*	*	*	*	*	HALF R	*	*	*	*	0	O	*	
31 12 85	0715	1.7	0.1	15	*	*	*	*	*	HALF R	*	*	*	*	0	O	*	

SITE B

DATA READ FROM

DATE		WAVE PERIOD		WAVE HT		WAVE DIRN		WAVE TYPE		SURF ZONE WIDTH		OFFS BAR		WIND SPEED		WIND DIRN		STATE OF TIDE		BERM ELEV		DIST TO BERM		DIST TO SHORE		FORE-SLOPE		CURRENT DIRN		SAND/S OR PHOTO		REMARK						
3	1	85	0700	1.4	0.1	355	*	*	*	*	*	*	*	*	*	*	*	HIGH S	*	*	*	*	*	*	*	*	*	*	*	*	*							
6	1	85	0700	1.5	0.1	110	*	*	*	*	*	*	*	*	*	*	*	HIGH R	*	*	*	*	*	*	*	*	*	*	*	*	*	*						
7	1	85	0700	1.1	0.1	225	*	*	*	*	*	*	*	*	*	*	*	3/4 R	*	*	*	*	*	*	*	*	*	*	*	*	*	*	*					
8	1	85	0700	1.1	0.1	225	*	*	*	*	*	*	*	*	*	*	*	3/4 R	*	*	*	*	*	*	*	*	*	*	*	*	*	*	*	*				
9	1	85	0700	1.2	0.1	220	*	*	*	*	*	*	*	*	*	*	*	HALF R	*	*	*	*	*	*	*	*	*	*	*	*	*	*	*	*	*			
10	1	85	0700	0.8	0.1	130	*	*	*	*	*	*	*	*	*	*	*	1/4 R	*	*	*	*	*	*	*	*	*	*	*	*	*	*	*	*	*			
13	1	85	0700	1.1	0.1	215	*	*	*	*	*	*	*	*	*	*	*	LOW F	*	*	*	*	*	*	*	*	*	*	*	*	*	*	*	*	*			
16	1	85	0700	2.1	0.3	260	*	*	*	*	*	*	*	*	*	*	*	HIGH F	*	*	*	*	*	*	*	*	*	*	*	*	*	*	*	*	*	*		
17	1	85	0700	3.6	0.8	280	*	*	*	*	*	*	*	*	*	*	*	HIGH S	*	*	*	*	*	*	*	*	*	*	*	*	*	*	*	*	*	*		
18	1	85	0700	1.2	0.1	240	*	*	*	*	*	*	*	*	*	*	*	HIGH R	*	*	*	*	*	*	*	*	*	*	*	*	*	*	*	*	*	*		
19	1	85	0700	1.6	0.3	310	*	*	*	*	*	*	*	*	*	*	*	3/4 R	*	*	*	*	*	*	*	*	*	*	*	*	*	*	*	*	*	*	*	
21	1	85	0700	1.2	0.1	90	*	*	*	*	*	*	*	*	*	*	*	3/4 R	*	*	*	*	*	*	*	*	*	*	*	*	*	*	*	*	*	*	*	
22	1	85	0700	1.4	0.1	285	*	*	*	*	*	*	*	*	*	*	*	HALF R	*	*	*	*	*	*	*	*	*	*	*	*	*	*	*	*	*	*	*	
23	1	85	0700	1.1	0.1	30	*	*	*	*	*	*	*	*	*	*	*	HALF R	*	*	*	*	*	*	*	*	*	*	*	*	*	*	*	*	*	*	*	
24	1	85	0700	1.5	0.1	55	*	*	*	*	*	*	*	*	*	*	*	HALF R	*	*	*	*	*	*	*	*	*	*	*	*	*	*	*	*	*	*	*	*
28	1	85	0700	0.9	0.1	230	*	*	*	*	*	*	*	*	*	*	*	1/4 R	*	*	*	*	*	*	*	*	*	*	*	*	*	*	*	*	*	*	*	*
29	1	85	0700	1.6	0.1	105	*	*	*	*	*	*	*	*	*	*	*	1/4 F	*	*	*	*	*	*	*	*	*	*	*	*	*	*	*	*	*	*	*	*
30	1	85	0700	1.3	0.2	270	*	*	*	*	*	*	*	*	*	*	*	3/4 F	*	*	*	*	*	*	*	*	*	*	*	*	*	*	*	*	*	*	*	*
31	1	85	0700	1.8	0.3	*	*	*	*	*	*	*	*	*	*	*	*	HIGH F	*	*	*	*	*	*	*	*	*	*	*	*	*	*	*	*	*	*	*	*
1	2	85	0700	1.9	0.2	265	*	*	*	*	*	*	*	*	*	*	*	HIGH F	*	*	*	*	*	*	*	*	*	*	*	*	*	*	*	*	*	*	*	*
2	2	85	0700	2.3	0.1	255	*	*	*	*	*	*	*	*	*	*	*	HIGH R	*	*	*	*	*	*	*	*	*	*	*	*	*	*	*	*	*	*	*	*









BEACH PROTECTION AUTHORITY - COPECHECK OUTPUT

DATA READ FROM :

SITE NUMBER : 4302 OBSERVER CODE : 0

GREEN ISLAND SITE B CAIRNS CITY

DATE DY MH YR	WAVE PERIOD	WAVE HT	WAVE DIRN	WAVE TYPE	SURF ZONE	OFFS BAR	WIND SPEED	WIND DIRN	STATE OF TIDE	BERM ELEV	DIST TO BERM	DIST TO VEG	FORE- SHORE SLOPE	CURRENT SPEED	DIRN	SAND/S OR PHOTO	REMARK
29 5 85	0730	2.1	0.3	225	*	*	*	*	HALF F	*	*	*	*	*	*	*	*
30 5 85	0730	1.6	0.3	225	*	*	*	*	HALF F	*	*	*	*	*	*	*	*
31 5 85	0730	1.3	0.3	225	*	*	*	*	1/4 F	*	*	*	*	*	*	*	*
1 6 85	0730	2.3	0.6	265	*	*	*	*	1/4 S	*	*	*	*	*	*	*	*
6 6 85	0730	11.2	0.3	210	*	*	*	*	HALF R	*	*	*	*	*	*	*	*
7 6 85	0730	1.2	0.3	225	*	*	*	*	1/4 F	*	*	*	*	*	*	*	*
8 6 85	0730	1.2	0.3	230	*	*	*	*	3/4 F	*	*	*	*	*	*	*	*
12 6 85	0730	1.6	0.2	280	*	*	*	*	HALF F	*	*	*	*	*	*	*	*
13 6 85	0730	2.2	0.2	270	*	*	*	*	HALF F	*	*	*	*	*	*	*	*
14 6 85	0730	1.5	0.3	275	*	*	*	*	LOW F	*	*	*	*	*	*	*	*
15 6 85	0730	4.9	0.5	280	*	*	*	*	LOW F	*	*	*	*	*	*	*	*
19 6 85	0730	3.2	0.3	280	*	*	*	*	HIGH R	*	*	*	*	*	*	*	*
20 6 85	0730	1.1	0.2	230	*	*	*	*	3/4 R	*	*	*	*	*	*	*	*
21 6 85	0730	1.2	0.2	230	*	*	*	*	3/4 R	*	*	*	*	*	*	*	*
22 6 85	0730	1.1	0.3	230	*	*	*	*	1/4 R	*	*	*	*	*	*	*	*
23 6 85	0730	1.1	0.2	225	*	*	*	*	LOW S	*	*	*	*	*	*	*	*
25 6 85	0730	1.0	0.1	225	*	*	*	*	3/4 F	*	*	*	*	*	*	*	*
26 6 85	0730	1.1	0.2	225	*	*	*	*	HALF F	*	*	*	*	*	*	*	*
27 6 85	0730	1.5	0.3	250	*	*	*	*	1/4 F	*	*	*	*	*	*	*	*
28 6 85	0730	4.0	0.3	265	*	*	*	*	1/4 F	*	*	*	*	*	*	*	*



BEACH PROTECTION AUTHORITY - COPECHECK OUTPUT

DATA READ FROM :

GREEN ISLAND SITE B CAIRNS CITY

SITE NUMBER : 4302 OBSERVER CODE : 0

DATE DY MH YR	TIME	WAVE PERIOD HT	WAVE HT	WAVE DIRN	WAVE TYPE	SURF ZONE WIDTH	OFFS BAR	WIND SPEED	WIND DIRN	STATE OF TIDE	BERM ELEV	DIST TO BERM	DIST TO VEG	FORE- SHORE SLOPE	CURRENT SPEED	DIRN	SAND/S OR PHOTO	REMARK
3	8 85	0730	1.8	0.2	280	*	*	*	*	HALF R	*	*	*	*	*	*	*	*
4	8 85	0730	1.9	0.1	70	*	*	*	*	HALF R	*	*	*	*	*	*	*	*
5	8 85	0745	1.6	0.1	110	*	*	*	*	1/4 R	*	*	*	*	*	*	*	*
7	8 85	0730	0.9	0.1	310	*	*	*	*	LOW R	*	*	*	*	*	*	*	*
8	8 85	0730	1.1	0.1	230	*	*	*	*	1/4 F	*	*	*	*	*	*	*	*
9	8 85	0735	1.0	0.1	230	*	*	*	*	HALF F	*	*	*	*	*	*	*	*
10	8 85	0730	1.1	0.1	290	*	*	*	*	HALF F	*	*	*	*	*	*	*	*
11	8 85	0730	1.1	0.1	260	*	*	*	*	HALF F	*	*	*	*	*	*	*	*
12	8 85	0738	1.2	0.1	280	*	*	*	*	3/4 F	*	*	*	*	*	*	*	*
14	8 85	0730	1.2	0.1	240	*	*	*	*	3/4 R	*	*	*	*	*	*	*	*
15	8 85	0730	1.8	0.1	150	*	*	*	*	3/4 R	*	*	*	*	*	*	*	*
16	8 85	0730	1.4	0.1	110	*	*	*	*	3/4 R	*	*	*	*	*	*	*	*
17	8 85	0730	1.3	0.1	250	*	*	*	*	HALF R	*	*	*	*	*	*	*	*
20	8 85	0730	1.0	0.1	250	*	*	*	*	1/4 R	*	*	*	*	*	*	*	*
21	8 85	0730	1.7	0.1	220	*	*	*	*	LOW F	*	*	*	*	*	*	*	*
22	8 85	0730	1.7	0.1	90	*	*	*	*	LOW S	*	*	*	*	*	*	*	*
23	8 85	0730	1.1	0.1	290	*	*	*	*	3/4 F	*	*	*	*	*	*	*	*
24	8 85	0730	1.5	0.1	310	*	*	*	*	HALF F	*	*	*	*	*	*	*	*
25	8 85	0730	1.5	0.1	260	*	*	*	*	HALF F	*	*	*	*	*	*	*	*
27	8 85	0730	1.7	0.1	250	*	*	*	*	HIGH F	*	*	*	*	*	*	*	*
28	8 85	0730	1.4	0.1	250	*	*	*	*	3/4 R	*	*	*	*	*	*	*	*



BEACH PROTECTION AUTHORITY - COPECHECK OUTPUT

DATA READ FROM :

GREEN ISLAND SITE B CAIRNS CITY

SITE NUMBER : 4302 OBSERVER CODE : 0

DATE DY MH YR	WAVE PERIOD	WAVE HT	WAVE DIRN	WAVE TYPE	SURF ZONE WIDTH	OFFS BAR	WIND SPEED	WIND DIRN	STATE OF TIDE	BERM ELEV	DIST TO BERM	DIST TO VEG	FORE- SHORE SLOPE	CURRENT SPEED	DIRN	SAND/S OR PHOTO	REMARK
26 9 85	0730	1.5	0.1	300	.	.	.	.	HIGH F	.	.	.	.	.	.	.	.
27 9 85	0730	1.6	0.1	300	.	.	.	.	3/4 R	.	.	.	.	.	.	.	.
28 9 85	0730	1.7	0.1	280	.	.	.	.	3/4 R	.	.	.	.	.	.	.	.
29 9 85	0730	3.3	0.2	290	.	.	.	.	3/4 R	.	.	.	.	.	.	.	.
2 10 85	0730	1.8	0.1	250	.	.	.	.	3/4 R	.	.	.	.	.	.	.	.
3 10 85	0730	1.8	0.1	250	.	.	.	.	HALF R	.	.	.	.	.	.	.	.
4 10 85	0745	1.8	0.1	110	.	.	.	.	HALF R	.	.	.	.	.	.	.	.
5 10 85	0730	1.7	0.1	290	.	.	.	.	1/4 R	.	.	.	.	.	.	.	.
6 10 85	0730	1.4	0.1	300	.	.	.	.	1/4 R	.	.	.	.	.	.	.	.
7 10 85	0730	1.7	0.1	310	.	.	.	.	HALF F	.	.	.	.	.	.	.	.
9 10 85	0700	1.5	0.1	280	.	.	.	.	HIGH F	.	.	.	.	.	.	.	.
10 10 85	0730	1.8	0.1	310	.	.	.	.	3/4 F	.	.	.	.	.	.	.	.
11 10 85	0730	0.0	0.0	.	.	.	.	.	HIGH F	.	.	.	.	.	.	.	.
12 10 85	0715	1.7	0.1	150	.	.	.	.	HIGH F	.	.	.	.	.	.	.	.
14 10 85	0715	1.6	0.1	280	.	.	.	.	3/4 R	.	.	.	.	.	.	.	.
15 10 85	0730	1.6	0.1	290	.	.	.	.	HALF R	.	.	.	.	.	.	.	.
16 10 85	0730	1.8	0.1	300	.	.	.	.	HALF R	.	.	.	.	.	.	.	.
17 10 85	0730	1.3	0.1	310	.	.	.	.	HALF R	.	.	.	.	.	.	.	.
18 10 85	0730	1.1	0.1	340	.	.	.	.	HALF R	.	.	.	.	.	.	.	.
19 10 85	0730	1.6	0.1	350	.	.	.	.	1/4 R	.	.	.	.	.	.	.	.
20 10 85	0730	1.4	0.1	10	.	.	.	.	3/4 F	.	.	.	.	.	.	.	.
21 10 85	0730	1.5	0.2	330	.	.	.	.	HALF F	.	.	.	.	.	.	.	.



BEACH PROTECTION AUTHORITY - COPECHECK OUTPUT

DATA READ FROM :

GREEN ISLAND SITE B CAIRNS CITY

SITE NUMBER : 4302 OBSERVER CODE : 0

DATE DY MH YR	WAVE PERIOD	WAVE HT	WAVE DIRN	WAVE TYPE	SURF ZONE	OFFS BAR	WIND SPEED	WIND DIRN	STATE OF TIDE	BERM ELEV	DIST TO BERM	DIST TO VEG	DIST TO SHORE	FORE- SHORE SLOPE	CURRENT SPEED	DIRN	SAND/S OR PHOTO	REMARK
19 11 85	0715	1.5	0.3	15	*	*	*	*	HALF F	*	*	*	*	*	*	*	*	*
20 11 85	0700	1.4	0.1	15	*	*	*	*	HALF F	*	*	*	*	*	*	*	*	*
21 11 85	0715	1.7	0.1	15	*	*	*	*	HIGH F	*	*	*	*	*	*	*	*	*
22 11 85	0720	1.8	0.1	15	*	*	*	*	HIGH F	*	*	*	*	*	*	*	*	*
23 11 85	0715	1.4	0.1	10	*	*	*	*	HIGH F	*	*	*	*	*	*	*	*	*
25 11 85	0700	1.7	0.1	290	*	*	*	*	HIGH F	*	*	*	*	*	*	*	*	*
26 11 85	0700	2.0	0.3	*	*	*	*	*	3/4 R	*	*	*	*	*	*	*	*	*
27 11 85	0720	1.8	0.1	285	*	*	*	*	HIGH R	*	*	*	*	*	*	*	*	*
28 11 85	0715	1.9	0.1	290	*	*	*	*	3/4 R	*	*	*	*	*	*	*	*	*
29 11 85	0723	2.2	0.1	280	*	*	*	*	HIGH F	*	*	*	*	*	*	*	*	*
30 11 85	0730	1.4	0.1	295	*	*	*	*	HALF R	*	*	*	*	*	*	*	*	*
1 12 85	0715	1.3	0.1	120	*	*	*	*	HALF R	*	*	*	*	*	*	*	*	*
2 12 85	0715	1.2	0.1	335	*	*	*	*	HALF R	*	*	*	*	*	*	*	*	*
3 12 85	0720	1.5	0.1	34	*	*	*	*	1/4 R	*	*	*	*	*	*	*	*	*
4 12 85	0715	1.4	0.1	350	*	*	*	*	LOW R	*	*	*	*	*	*	*	*	*
5 12 85	0715	1.0	0.1	260	*	*	*	*	1/4 F	*	*	*	*	*	*	*	*	*
6 12 85	0715	1.1	0.1	330	*	*	*	*	HALF F	*	*	*	*	*	*	*	*	*
7 12 85	0715	1.2	0.1	345	*	*	*	*	3/4 F	*	*	*	*	*	*	*	*	*
9 12 85	0715	2.1	0.1	260	*	*	*	*	HIGH F	*	*	*	*	*	*	*	*	*
10 12 85	0715	2.1	0.1	320	*	*	*	*	3/4 R	*	*	*	*	*	*	*	*	*
11 12 85	0715	2.0	0.3	300	*	*	*	*	3/4 R	*	*	*	*	*	*	*	*	*
16 12 85	0730	0.0	0.0	*	*	*	*	*	1/4 R	*	*	*	*	*	*	*	*	*
17 12 85	0730	1.1	0.1	330	*	*	*	*	1/4 R	*	*	*	*	*	*	*	*	*
18 12 85	0730	1.1	0.1	350	*	*	*	*	1/4 F	*	*	*	*	*	*	*	*	*





SITE C

BEACH PROTECTION AUTHORITY - COPECHECK OUTPUT

DATA READ FROM

GREEN ISLAND SITE C				CAIRNS CITY				SITE NUMBER : 4303				OBSERVER CODE : 0					
DATE	WAVE PERIOD	WAVE HT	WAVE DIRN	WAVE TYPE	SURF ZONE WIDTH	OFFS BAR	WIND SPEED	WIND DIRN	WIND STATE OF TIDE	BERM ELEV	DIST TO BERM	DIST TO VEG	FORE SHORE SLOPE	CURRENT SPEED	DIRN	SAND/S OR PHOTO	REMARK
3 1 85	0715	2.3	0.1	355	.	.	.	.	HIGH S	.	.	.	.	1	L	.	.
6 1 85	0715	2.6	0.1	340	.	.	.	.	HIGH R	.	.	.	.	4	R	.	.
7 1 85	0715	4.2	0.1	300	.	.	.	.	3/4 R	.	.	.	.	2	R	.	.
8 1 85	0715	2.2	0.1	320	.	.	.	.	3/4 R	.	.	.	.	4	R	.	.
9 1 85	0715	2.4	0.1	310	.	.	.	.	HALF R	.	.	.	.	1	R	.	.
10 1 85	0715	2.5	0.1	15	.	.	.	.	1/4 R	.	.	.	.	1	R	.	.
13 1 85	0715	4.1	0.1	30	.	.	.	.	LOW F	.	.	.	.	0	O	.	.
14 1 85	0715	2.8	0.2	15	.	.	.	.	3/4 F	.	.	.	.	6	L	.	.
16 1 85	0715	5.0	0.3	290	.	.	.	.	HIGH F	.	.	.	.	4	R	.	.
17 1 85	0715	4.1	0.7	310	.	.	.	.	HIGH S	.	.	.	.	2	R	.	.
18 1 85	0715	3.5	0.1	300	.	.	.	.	HIGH R	.	.	.	.	1	R	.	.
19 1 85	0715	2.7	0.3	325	.	.	.	.	3/4 R	.	.	.	.	5	R	.	.
21 1 85	0715	2.7	0.1	10	.	.	.	.	3/4 R	.	.	.	.	3	L	.	.
22 1 85	0715	1.6	0.1	335	.	.	.	.	HALF R	.	.	.	.	2	R	.	.
23 1 85	0715	1.5	0.1	5	.	.	.	.	HALF R	.	.	.	.	3	L	.	.
24 1 85	0715	1.7	0.1	15	.	.	.	.	HALF R	.	.	.	.	1	R	.	.
28 1 85	0715	1.8	0.1	330	.	.	.	.	1/4 R	.	.	.	.	2	R	.	.
29 1 85	0715	3.9	0.1	300	.	.	.	.	1/4 F	.	.	.	.	1	L	.	.
30 1 85	0715	2.5	0.2	285	.	.	.	.	3/4 F	.	.	.	.	4	L	.	.
31 1 85	0715	1.9	0.3	310	.	.	.	.	HIGH F	.	.	.	.	4	R	.	.
1 2 85	0715	2.5	0.2	310	.	.	.	.	HIGH F	.	.	.	.	3	L	.	.
2 2 85	0715	3.6	0.1	300	.	.	.	.	HIGH S	.	.	.	.	2	L	.	.

BEACH PROTECTION AUTHORITY - COPECHECK OUTPUT

GREEN ISLAND SITE C CAIRNS CITY										SITE NUMBER : 4303 OBSERVER CODE : 0				DATA READ FROM :			
DATE DY MH YR	WAVE PERIOD	WAVE HT	WAVE DIRN	WAVE TYPE	SURF ZONE	OFFS BAR	WIND SPEED	WIND DIRN	STATE OF TIDE	BERM ELEV	DIST TO BERM	DIST TO VEG	FORE- SHORE SLOPE	CURRENT SPEED	DIRN	SAND/S OR PHOTO	REMARK
3 2 85	0715	4.5	0.2	300	.	.	.	.	HIGH R	.	.	.	.	1	R	.	.
4 2 85	0715	4.2	0.1	305	.	.	.	.	HIGH R	.	.	.	.	1	L	.	.
6 2 85	0715	4.5	0.1	310	.	.	.	.	HALF R	.	.	.	.	1	L	.	.
9 2 85	0715	2.3	0.1	305	.	.	.	.	1/4 R	.	.	.	.	1	L	.	.
11 2 85	0715	3.7	0.1	5	.	.	.	.	LOW R	.	.	.	.	2	L	.	.
12 2 85	0715	3.6	0.1	310	.	.	.	.	HALF F	.	.	.	.	3	L	.	.
16 2 85	0715	3.9	0.1	300	.	.	.	.	HIGH R	.	.	.	.	5	R	.	.
17 2 85	0715	2.5	0.3	300	.	.	.	.	HIGH R	.	.	.	.	6	R	.	.
18 2 85	0715	3.5	0.2	305	.	.	.	.	3/4 R	.	.	.	.	2	R	.	.
19 2 85	0715	3.7	0.1	305	.	.	.	.	3/4 R	.	.	.	.	6	R	.	.
20 2 85	0715	3.1	0.1	305	.	.	.	.	3/4 R	.	.	.	.	4	R	.	.
24 2 85	0715	2.8	0.2	10	.	.	.	.	HALF R	.	.	.	.	6	L	.	.
25 2 85	0715	2.0	0.1	350	.	.	.	.	HALF R	.	.	.	.	2	R	.	.
26 2 85	0715	1.8	0.1	355	.	.	.	.	3/4 R	.	.	.	.	2	R	.	.
27 2 85	0715	2.2	0.1	330	.	.	.	.	HIGH F	.	.	.	.	5	R	.	.
2 3 85	0715	3.9	0.1	355	.	.	.	.	HIGH F	.	.	.	.	0	O	.	.
3 3 85	0715	2.7	0.1	315	.	.	.	.	HIGH F	.	.	.	.	1	R	.	.
4 3 85	0715	2.4	0.1	310	.	.	.	.	HIGH R	.	.	.	.	4	R	.	.
5 3 85	0715	2.2	0.2	315	.	.	.	.	HIGH R	.	.	.	.	9	R	.	.
6 3 85	0715	2.5	0.2	320	.	.	.	.	HIGH R	.	.	.	.	3	L	.	.

BEACH PROTECTION AUTHORITY - COPECHECK OUTPUT

DATA READ FROM :

SITE NUMBER : 4303 OBSERVER CODE : 0

GREEN ISLAND SITE C CAIRNS CITY

DATE DY MM YR	TIME	WAVE PERIOD	WAVE HT	WAVE DIRN	WAVE TYPE	SURF ZONE	OFFS BAR	WIND SPEED	WIND DIRN	STATE OF TIDE	BERM ELEV	DIST TO BERM	DIST TO VEG	FORE- SHORE SLOPE	CURRENT SPEED	DIRN	SAND/S OR PHOTO	REMARK
9	3 85	0715	2.4	0.1	340	*	*	*	*	HALF R	*	*	*	*	4	R	*	
10	3 85	0715	2.4	0.1	345	*	*	*	*	HALF R	*	*	*	*	3	R	*	
11	3 85	0715	2.7	0.1	20	*	*	*	*	1/4 R	*	*	*	*	1	R	*	
12	3 85	0715	2.5	0.1	310	*	*	*	*	1/4 F	*	*	*	*	5	R	*	
13	3 85	0715	2.2	0.1	305	*	*	*	*	HALF F	*	*	*	*	2	R	*	
16	3 85	0715	3.9	0.2	305	*	*	*	*	HIGH F	*	*	*	*	4	R	*	
23	3 85	0715	3.5	0.1	305	*	*	*	*	3/4 R	*	*	*	*	2	R	*	
24	3 85	0715	2.9	0.1	305	*	*	*	*	HALF R	*	*	*	*	0	0	*	
25	3 85	0715	3.6	0.1	305	*	*	*	*	HALF R	*	*	*	*	1	R	*	
26	3 85	0715	3.6	0.1	310	*	*	*	*	3/4 R	*	*	*	*	0	-	*	
27	3 85	0715	3.1	0.1	310	*	*	*	*	3/4 R	*	*	*	*	0	0	*	
2	4 85	0715	3.1	0.1	290	*	*	*	*	HIGH F	*	*	*	*	1	R	*	
3	4 85	0715	1.9	0.2	305	*	*	*	*	HIGH F	*	*	*	*	7	R	*	
4	4 85	0715	1.6	0.1	320	*	*	*	*	3/4 R	*	*	*	*	2	R	*	
5	4 85	0715	2.5	0.1	310	*	*	*	*	3/4 R	*	*	*	*	2	R	*	
6	4 85	0715	2.7	0.2	325	*	*	*	*	3/4 R	*	*	*	*	2	R	*	
8	4 85	0715	3.0	0.2	325	*	*	*	*	HALF R	*	*	*	*	1	R	*	
9	4 85	0715	3.4	0.2	5	*	*	*	*	1/4 R	*	*	*	*	2	L	*	
12	4 85	0715	3.7	0.3	310	*	*	*	*	HALF F	*	*	*	*	*	*	*	
17	4 85	0715	2.1	0.2	315	*	*	*	*	HIGH S	*	*	*	*	2	R	*	

BEACH PROTECTION AUTHORITY - COPECHECK OUTPUT

GREEN ISLAND SITE C CAIRNS CITY													SITE NUMBER : 4303			OBSERVER CODE : 0			DATA READ FROM :		
DATE	WAVE PERIOD	WAVE HT	WAVE DIRN	WAVE TYPE	WAVE TYPE	SURF ZONE WIDTH	OFFS BAR	WIND SPEED	WIND DIRN	WIND STATE	BERM ELEV	DIST TO BERM	DIST TO VEG	FORE-TO-SHORE SLOPE	CURRENT SPEED	DIRN	SAND/S OR PHOTO	REMARK			
18 4 85	0715	1.8	0.2	320	*	*	*	*	*	3/4 R	*	*	*	*	1	R	*				
19 4 85	0715	1.7	0.2	310	*	*	*	*	*	3/4 R	*	*	*	*	3	R	*				
23 4 85	0715	3.7	0.3	310	*	*	*	*	*	HALF R	*	*	*	*	2	R	*				
1 5 85	0700	6.1	0.5	315	*	*	*	*	*	HIGH F	*	*	*	*	3	R	*				
2 5 85	0715	2.6	1.2	300	*	*	*	*	*	HIGH S	*	*	*	*	2	R	*				
3 5 85	0715	2.9	0.5	305	*	*	*	*	*	HIGH R	*	*	*	*	2	R	*				
7 5 85	0745	2.2	0.2	320	*	*	*	*	*	HALF R	*	*	*	*	1	R	*				
8 5 85	0745	2.3	0.1	340	*	*	*	*	*	1/4 R	*	*	*	*	2	L	*				
10 5 85	0745	2.3	0.1	310	*	*	*	*	*	HALF F	*	*	*	*	0	*	*				
14 5 85	0745	4.3	0.5	315	*	*	*	*	*	1/4 F	*	*	*	*	0	O	*				
15 5 85	0745	4.0	0.5	310	*	*	*	*	*	HIGH F	*	*	*	*	3	L	*				
16 5 85	0745	3.9	0.3	300	*	*	*	*	*	HIGH F	*	*	*	*	3	R	*				
17 5 85	0745	2.0	1.6	320	*	*	*	*	*	HIGH F	*	*	*	*	10	R	*				
18 5 85	0745	3.8	1.2	315	*	*	*	*	*	HIGH F	*	*	*	*	3	R	*				
19 5 85	0745	3.7	0.2	330	*	*	*	*	*	HIGH F	*	*	*	*	2	L	*				
23 5 85	0745	3.4	0.2	330	*	*	*	*	*	HALF R	*	*	*	*	0	O	*				
24 5 85	0745	3.2	0.2	325	*	*	*	*	*	HIGH F	*	*	*	*	4	L	*				
26 5 85	0745	4.3	0.3	335	*	*	*	*	*	3/4 F	*	*	*	*	3	R	*				

BEACH PROTECTION AUTHORITY - COPECHECK OUTPUT

DATA READ FROM :

GREEN ISLAND SITE C CAIRNS CITY

SITE NUMBER : 4303 OBSERVER CODE : 0

DATE DY MH YR	WAVE PERIOD	WAVE HT	WAVE DIRN	WAVE TYPE	SURF ZONE	OFFS BAR	WIND SPEED	WIND DIRN	STATE OF TIDE	BERM ELEV	DIST TO BERM	DIST TO VEG	FORE- SHORE SLOPE	CURRENT SPEED	DIRN	SAND/S OR PHOTO	REMARK
29 5 85	0745	2.5	0.3	315	.	.	.	.	HALF F	.	.	.	.	1	R	.	.
30 5 85	0745	3.1	0.5	310	.	.	.	.	HALF F	.	.	.	.	2	R	.	.
31 5 85	0745	3.9	0.6	310	.	.	.	.	1/4 F	.	.	.	.	1	R	.	.
1 6 85	0745	3.7	0.3	315	.	.	.	.	1/4 F	.	.	.	.	1	R	.	.
6 6 85	0745	1.2	0.1	300	.	.	.	.	HALF R	.	.	.	.	3	R	.	.
7 6 85	0745	0.7	0.1	310	.	.	.	.	1/4 S	.	.	.	.	1	R	.	.
8 6 85	0745	1.1	0.1	310	.	.	.	.	3/4 F	.	.	.	.	1	R	.	.
12 6 85	0745	2.1	0.2	310	.	.	.	.	HALF F	.	.	.	.	2	R	.	.
13 6 85	0745	2.5	0.3	310	.	.	.	.	HALF F	.	.	.	.	1	L	.	.
14 6 85	0745	3.4	0.2	315	.	.	.	.	1/4 R	.	.	.	.	2	L	.	.
15 6 85	0745	3.3	0.3	330	.	.	.	.	LOW F	.	.	.	.	5	R	.	.
19 6 85	0745	3.0	0.2	330	.	.	.	.	HIGH R	.	.	.	.	2	R	.	.
20 6 85	0745	3.1	0.2	330	.	.	.	.	3/4 R	.	.	.	.	3	R	.	.
21 6 85	0745	3.8	0.2	310	.	.	.	.	3/4 R	.	.	.	.	3	L	.	.
22 6 85	0745	2.4	0.2	290	.	.	.	.	1/4 R	.	.	.	.	3	R	.	.
23 6 85	0745	2.3	0.1	290	.	.	.	.	LOW S	.	.	.	.	3	R	.	.
25 6 85	0745	1.8	0.1	285	.	.	.	.	3/4 F	.	.	.	.	5	R	.	.
26 6 85	0745	2.3	0.1	300	.	.	.	.	HALF F	.	.	.	.	6	R	.	.
27 6 85	0745	2.9	0.3	310	.	.	.	.	HALF F	.	.	.	.	4	L	.	.
28 6 85	0745	3.8	0.5	335	.	.	.	.	1/4 F	.	.	.	.	3	L	.	.

BEACH PROTECTION AUTHORITY - COPECHECK OUTPUT

GREEN ISLAND SITE C CAIRNS CITY										SITE NUMBER : 4303			OBSERVER CODE : 0			DATA READ FROM :		
DATE	TIME	WAVE PERIOD	WAVE HT	WAVE DIRN	WAVE TYPE	SURF ZONE WIDTH	OFFS BAR	WIND SPEED	WIND DIRN	STATE OF TIDE	BERM ELEV	DIST TO BERM	DIST TO VEG	FORE-SHORE SLOPE	CURRENT SPEED	DIRN	SAND/S OR PHOTO	REMARK
29 6 85	0745	3.5	0.5	320	*	*	*	*	*	HIGH F	*	*	*	*	1	R	*	
30 6 85	0745	4.3	0.6	325	*	*	*	*	*	HIGH F	*	*	*	*	5	R	*	
3 7 85	0745	3.4	0.3	305	*	*	*	*	*	3/4 R	*	*	*	*	0	O	*	
7 7 85	0745	1.1	0.1	290	*	*	*	*	*	LOW S	*	*	*	*	4	L	*	
10 7 85	0745	2.4	0.1	350	*	*	*	*	*	HALF F	*	*	*	*	1	R	*	
11 7 85	0745	2.6	0.1	335	*	*	*	*	*	HALF F	*	*	*	*	2	R	*	
12 7 85	0745	1.8	0.1	340	*	*	*	*	*	1/4 F	*	*	*	*	2	L	*	
13 7 85	0745	1.6	0.1	335	*	*	*	*	*	1/4 F	*	*	*	*	2	R	*	
14 7 85	0745	2.4	0.2	295	*	*	*	*	*	LOW F	*	*	*	*	1	L	*	
18 7 85	0745	3.9	0.3	330	*	*	*	*	*	3/4 R	*	*	*	*	1	L	*	
19 7 85	0725	4.0	0.1	340	*	*	*	*	*	3/4 R	*	*	*	*	1	L	*	
20 7 85	0730	3.3	0.1	320	*	*	*	*	*	HALF R	*	*	*	*	1	L	*	
22 7 85	0735	5.6	0.1	350	*	*	*	*	*	LOW R	*	*	*	*	5	4	*	
23 7 85	0745	3.7	0.1	25	*	*	*	*	*	LOW R	*	*	*	*	7	L	*	
27 7 85	0745	3.7	0.1	350	*	*	*	*	*	1/4 F	*	*	*	*	2	L	*	
28 7 85	0740	3.0	0.1	340	*	*	*	*	*	1/4 F	*	*	*	*	1	L	*	
31 7 85	0725	3.0	0.1	300	*	*	*	*	*	3/4 R	*	*	*	*	1	R	*	
1 8 85	0745	3.1	0.1	320	*	*	*	*	*	HALF R	*	*	*	*	1	L	*	
2 8 85	0745	3.6	0.3	310	*	*	*	*	*	HALF R	*	*	*	*	3	L	*	

BEACH PROTECTION AUTHORITY - COPECHECK OUTPUT

DATA READ FROM :

SITE NUMBER : 4303 OBSERVER CODE : 0

GREEN ISLAND SITE C CAIRNS CITY

DATE DY MH YR	WAVE PERIOD	WAVE HT	WAVE DIRN	WAVE TYPE	SURF ZONE	OFFS BAR	WIND SPEED	WIND DIRN	WIND STATE OF TIDE	BERM ELEV	DIST TO BERM	DIST TO VEG	FORE- SHORE SLOPE	CURRENT SPEED	DIRN	SAND/S OR PHOTO	REMARK
3 8 85	0735	2.6	0.1	340	*	*	*	*	HALF R	*	*	*	*	3	L	*	
4 8 85	0730	2.9	0.1	340	*	*	*	*	HALF R	*	*	*	*	4	L	*	
5 8 85	0800	1.9	0.1	0	*	*	*	*	1/4 R	*	*	*	*	2	L	*	
7 8 85	0730	1.4	0.1	340	*	*	*	*	LOW R	*	*	*	*	1	L	*	
8 8 85	0735	1.6	0.1	290	*	*	*	*	1/4 F	*	*	*	*	1	R	*	
9 8 85	0740	1.9	0.1	320	*	*	*	*	HALF F	*	*	*	*	1	L	*	
10 8 85	0740	1.7	0.1	320	*	*	*	*	HALF F	*	*	*	*	0	O	*	
11 8 85	0745	2.0	0.1	340	*	*	*	*	HALF F	*	*	*	*	0	O	*	
12 8 85	0758	1.3	0.1	0	*	*	*	*	3/4 F	*	*	*	*	0	O	*	
14 8 85	0745	3.1	0.1	350	*	*	*	*	HIGH S	*	*	*	*	3	L	*	
15 8 85	0745	3.1	0.1	320	*	*	*	*	3/4 R	*	*	*	*	1	R	*	
16 8 85	0745	3.1	0.1	10	*	*	*	*	3/4 R	*	*	*	*	0	O	*	
17 8 85	0745	3.6	0.1	0	*	*	*	*	HALF R	*	*	*	*	1	L	*	
20 8 85	0745	2.0	0.1	0	*	*	*	*	1/4 R	*	*	*	*	5	L	*	
21 8 85	0745	2.7	0.1	10	*	*	*	*	LOW S	*	*	*	*	1	L	*	
22 8 85	0745	4.4	0.1	10	*	*	*	*	LOW R	*	*	*	*	1	L	*	
23 8 85	0745	2.6	0.1	30	*	*	*	*	3/4 F	*	*	*	*	6	L	*	
24 8 85	0745	2.5	0.1	350	*	*	*	*	HALF F	*	*	*	*	3	L	*	
25 8 85	0730	2.7	0.1	340	*	*	*	*	HALF F	*	*	*	*	0	O	*	
27 8 85	0745	2.9	0.1	300	*	*	*	*	HIGH F	*	*	*	*	1	R	*	
28 8 85	0745	3.3	0.1	300	*	*	*	*	3/4 R	*	*	*	*	2	R	*	
29 8 85	0745	2.9	0.1	320	*	*	*	*	3/4 R	*	*	*	*	1	L	*	
30 8 85	0745	3.9	0.1	310	*	*	*	*	HALF R	*	*	*	*	0	O	*	
1 9 85	0745	1.8	0.1	320	*	*	*	*	HALF R	*	*	*	*	0	O	*	



BEACH PROTECTION AUTHORITY - COPECHECK OUTPUT

GREEN ISLAND SITE C CAIRNS CITY										SITE NUMBER : 4303				OBSERVER CODE : 0				DATA READ FROM :			
DATE	TIME	WAVE PERIOD	WAVE HT	WAVE DIRN	WAVE TYPE	SURF ZONE WIDTH	OFFS BAR	WIND SPEED	WIND DIRN	WIND STATE OF TIDE	BERM ELEV	DIST TO BERM	DIST TO VEG	DIST TO SHORE	FORE-SLOPE	CURRENT SPEED	DIRN	SAND/S OR PHOTO	REMARK		
2	9 85	0745	2.2	0.1	340	.	.	.	.	3/4 R	.	.	.	.	.	0	0	.	.		
3	9 85	0730	1.6	0.1	340	.	.	.	.	3/4 R	.	.	.	.	.	7	L	.	.		
4	9 85	0745	2.6	0.1	350	.	.	.	.	HALF R	.	.	.	.	.	5	L	.	.		
6	9 85	0745	2.7	0.1	350	.	.	.	.	1/4 R	.	.	.	.	.	1	L	.	.		
7	9 85	0745	2.7	0.1	340	.	.	.	.	HALF F	.	.	.	.	.	1	R	.	.		
8	9 85	0730	3.8	0.1	330	.	.	.	.	3/4 F	.	.	.	.	.	3	L	.	.		
11	9 85	0745	1.8	0.1	330	.	.	.	.	3/4 F	.	.	.	.	.	0	0	.	.		
12	9 85	0745	2.8	0.1	310	.	.	.	.	HIGH F	.	.	.	.	.	1	L	.	.		
13	9 85	0745	3.9	0.1	320	.	.	.	.	HIGH F	.	.	.	.	.	1	L	.	.		
14	9 85	0745	2.7	0.2	315	.	.	.	.	3/4 R	.	.	.	.	.	3	R	.	.		
15	9 85	0745	1.8	0.1	320	.	.	.	.	3/4 R	.	.	.	.	.	0	0	.	.		
16	9 85	0745	2.1	0.3	320	.	.	.	.	HALF F	.	.	.	.	.	2	R	.	.		
18	9 85	0745	2.3	0.1	340	.	.	.	.	HALF R	.	.	.	.	.	2	R	.	.		
19	9 85	0745	2.3	0.1	0	.	.	.	.	HALF R	.	.	.	.	.	0	0	.	.		
20	9 85	0745	2.3	0.1	350	.	.	.	.	HIGH R	.	.	.	.	.	0	0	.	.		
21	9 85	0745	3.1	0.1	340	.	.	.	.	3/4 F	.	.	.	.	.	0	0	.	.		
23	9 85	0730	3.1	0.1	5	.	.	.	.	HALF F	.	.	.	.	.	1	R	.	.		
25	9 85	0745	1.4	0.1	330	.	.	.	.	HIGH F	.	.	.	.	.	1	L	.	.		
26	9 85	0745	2.1	0.1	340	.	.	.	.	HIGH F	.	.	.	.	.	2	L	.	.		
27	9 85	0745	2.3	0.1	330	.	.	.	.	3/4 R	.	.	.	.	.	0	0	.	.		
28	9 85	0745	1.9	0.1	320	.	.	.	.	3/4 R	.	.	.	.	.	1	R	.	.		

BEACH PROTECTION AUTHORITY - COPECHECK OUTPUT

DATA READ FROM :

SITE NUMBER : 4303 OBSERVER CODE : 0

GREEN ISLAND SITE C CAIRNS CITY

DATE DY MH YR	WAVE PERIOD	WAVE HT	WAVE DIRN	WAVE TYPE	SURF ZONE	OFFS BAR	WIND SPEED	WIND DIRN	STATE OF TIDE	BERM ELEV	DIST TO BERM	DIST TO VEG	FORE- SHORE SLOPE	CURRENT SPEED	DIRN	SAND/S OR PHOTO	REMARK
29 9 85	0745	4.3	0.2	320	*	*	*	3/4 R	*	*	*	*	*	1	L	*	*
2 10 85	0745	3.7	0.1	340	*	*	*	3/4 R	*	*	*	*	*	3	L	*	*
3 10 85	0745	4.1	0.1	310	*	*	*	HALF R	*	*	*	*	*	1	L	*	*
4 10 85	0800	4.4	0.1	10	*	*	*	HALF R	*	*	*	*	*	1	L	*	*
5 10 85	0745	3.8	0.1	10	*	*	*	1/4 R	*	*	*	*	*	1	L	*	*
6 10 85	0745	2.9	0.1	340	*	*	*	1/4 R	*	*	*	*	0	O	*	*	
7 10 85	0745	3.4	0.1	350	*	*	*	HALF F	*	*	*	*	1	R	*	*	
9 10 85	0715	1.9	0.1	320	*	*	*	HIGH F	*	*	*	*	1	L	*	*	
10 10 85	0745	2.1	0.1	330	*	*	*	3/4 F	*	*	*	*	1	L	*	*	
11 10 85	0745	2.9	0.1	0	*	*	*	HIGH F	*	*	*	*	1	L	*	*	
12 10 85	0730	3.6	0.1	350	*	*	*	HIGH F	*	*	*	*	0	O	*	*	
14 10 85	0730	2.8	0.1	340	*	*	*	3/4 R	*	*	*	*	1	L	*	*	
15 10 85	0745	2.6	0.1	340	*	*	*	HALF R	*	*	*	*	1	R	*	*	
16 10 85	0745	2.0	0.1	320	*	*	*	HALF R	*	*	*	*	5	R	*	*	
17 10 85	0745	2.6	0.1	330	*	*	*	HALF R	*	*	*	*	3	R	*	*	
18 10 85	0745	1.8	0.1	0	*	*	*	HALF R	*	*	*	*	3	L	*	*	
19 10 85	0745	2.5	0.1	0	*	*	*	1/4 R	*	*	*	*	9	L	*	*	
20 10 85	0745	2.6	0.1	350	*	*	*	3/4 F	*	*	*	*	4	L	*	*	
21 10 85	0745	1.6	0.2	340	*	*	*	HALF F	*	*	*	*	1	L	*	*	
23 10 85	0745	2.1	0.1	0	*	*	*	HIGH F	*	*	*	*	2	L	*	*	
24 10 85	0745	2.3	0.1	0	*	*	*	HIGH F	*	*	*	*	2	L	*	*	
25 10 85	0745	3.3	0.1	320	*	*	*	HIGH F	*	*	*	*	1	R	*	*	
26 10 85	0745	3.6	0.1	310	*	*	*	3/4 R	*	*	*	*	3	R	*	*	
27 10 85	0745	3.4	0.1	320	*	*	*	3/4 R	*	*	*	*	2	R	*	*	

BEACH PROTECTION AUTHORITY - COPECHECK OUTPUT

GREEN ISLAND SITE C										CAIRNS CITY										OBSERVER CODE : 0										DATA READ FROM :									
DATE	TIME	WAVE PERIOD	WAVE HT	WAVE DIRN	WAVE TYPE	SURF ZONE WIDTH	OFFS BAR	WIND SPEED	WIND DIRN	STATE OF TIDE	BERM ELEV	DIST TO BERM	DIST TO VEG	DIST TO SHORE	FORE-SLOPE	SPEED	CURRENT DIRN	SAND/S OR PHOTO	REMARK																				
28 10 85	0745	2.8	0.1	325						3/4 R						2	R	*																					
30 10 85	0745	3.0	0.1	320						HALF R						1	R	*																					
31 10 85	0745	3.8	0.1	340						HALF R						0	R	*																					
1 11 85	0745	3.3	0.1	0						HALF R						0	O	*																					
2 11 85	0745	4.2	0.1	0						HALF R						0	O	*																					
3 11 85	0745	2.9	0.1	330						HALF R						2	L	*																					
4 11 85	0745	2.6	0.1	340						HALF R						3	L	*																					
5 11 85	0745	3.2	0.1	330						3/4 F						4	L	*																					
6 11 85	0745	2.3	0.1	320						HALF F						2	L	*																					
7 11 85	0745	3.4	0.1	0						HALF F						2	L	*																					
8 11 85	0745	2.4	0.1	330						HALF F						1	L	*																					
9 11 85	0745	2.6	0.1	340						HALF F						2	L	*																					
10 11 85	0745	2.8	0.1	350						HIGH F						2	L	*																					
11 11 85	0745	3.1	0.1	320						3/4 R						1	L	*																					
12 11 85	0715	3.5	0.2	310						3/4 R						4	L	*																					
15 11 85	0745	1.7	0.1	340						HALF R						3	R	*																					
16 11 85	0745	2.2	0.1	0						HALF R						2	L	*																					
17 11 85	0745	1.5	0.1	0						LOW R						1	L	*																					
18 11 85	0715	1.9	0.1	0						3/4 F						5	L	*																					
19 11 85	0730	2.0	0.2	345						HALF F						3	L	*																					
20 11 85	0730	1.5	0.1	0						HALF F						2	L	*																					
21 11 85	0730	1.5	0.1	355						HIGH F						3	L	*																					
22 11 85	0730	1.9	0.2	355						HIGH F						2	L	*																					
23 11 85	0730	1.7	0.1	340						HIGH F						2	L	*																					

BEACH PROTECTION AUTHORITY - COPECHECK OUTPUT

DATA READ FROM :

SITE NUMBER : 4303 OBSERVER CODE : 0

GREEN ISLAND SITE C CAIRNS CITY

DATE DY MH YR	WAVE PERIOD	WAVE HT	WAVE DIRN	WAVE TYPE	SURF ZONE	OFFS BAR	WIND SPEED	WIND DIRN	STATE OF TIDE	BERM ELEV	DIST TO BERM	DIST TO VEG	FORE- SHORE SLOPE	CURRENT SPEED	DIRN	SAND/S OR PHOTO	REMARK
25 11 85	0715	2.2	0.1	325	*	*	*	*	HIGH F	*	*	*	*	2	L	*	*
26 11 85	0715	2.0	0.2	0	*	*	*	*	3/4 R	*	*	*	*	3	L	*	*
27 11 85	0730	2.4	0.1	310	*	*	*	*	HIGH R	*	*	*	*	2	L	*	*
28 11 85	0730	2.3	0.2	310	*	*	*	*	3/4 R	*	*	*	*	1	R	*	*
29 11 85	0730	1.6	0.1	320	*	*	*	*	HIGH F	*	*	*	*	7	R	*	*
30 11 85	0730	1.5	0.1	340	*	*	*	*	HALF R	*	*	*	*	3	L	*	*
1 12 85	0730	1.8	0.1	0	*	*	*	*	HALF R	*	*	*	*	3	L	*	*
2 12 85	0730	1.6	0.1	350	*	*	*	*	HALF R	*	*	*	*	4	L	*	*
3 12 85	0730	1.8	0.1	350	*	*	*	*	1/4 R	*	*	*	*	2	L	*	*
4 12 85	0730	2.3	0.1	0	*	*	*	*	LOW R	*	*	*	*	0	O	*	*
5 12 85	0730	1.8	0.1	300	*	*	*	*	1/4 F	*	*	*	*	5	R	*	*
6 12 85	0715	1.8	0.1	5	*	*	*	*	HALF F	*	*	*	*	1	R	*	*
7 12 85	0730	2.1	0.1	10	*	*	*	*	3/4 F	*	*	*	*	1	R	*	*
9 12 85	0720	2.8	0.1	330	*	*	*	*	HIGH F	*	*	*	*	1	L	*	*
10 12 85	0730	2.7	0.1	340	*	*	*	*	3/4 R	*	*	*	*	3	L	*	*
11 12 85	0730	2.1	0.3	330	*	*	*	*	3/4 R	*	*	*	*	2	R	*	*
16 12 85	0745	2.6	0.1	10	*	*	*	*	1/4 R	*	*	*	*	1	L	*	*
17 12 85	0745	1.6	0.1	10	*	*	*	*	1/4 R	*	*	*	*	4	L	*	*
18 12 85	0745	1.6	0.1	0	*	*	*	*	1/4 F	*	*	*	*	2	L	*	*
20 12 85	0750	1.5	0.1	350	*	*	*	*	3/4 F	*	*	*	*	4	R	*	*
21 12 85	0715	1.9	0.1	20	*	*	*	*	HIGH F	*	*	*	*	3	L	*	*
22 12 85	0730	2.1	0.1	330	*	*	*	*	HIGH F	*	*	*	*	2	L	*	*
23 12 85	0715	2.0	0.1	350	*	*	*	*	HIGH F	*	*	*	*	1	R	*	*
24 12 85	0745	2.0	0.1	350	*	*	*	*	3/4 R	*	*	*	*	1	R	*	*
27 12 85	0715	2.0	0.1	340	*	*	*	*	3/4 R	*	*	*	*	0	O	*	*

BEACH PROTECTION AUTHORITY - COPECHECK OUTPUT

GREEN ISLAND SITE C		CAIRNS CITY		DATA READ FROM :														
DATE	TIME	WAVE PERIOD	WAVE HT	WAVE DIRN	WAVE TYPE	SURF ZONE WIDTH	OFFS BAR	WIND SPEED	WIND DIRN	STATE OF TIDE	BERM ELEV	DIST TO BERM	DIST TO VEG	FORE-SHORE SLOPE	CURRENT SPEED	DIRN	SAND/S OR PHOTO	REMARK
28 12 85	0730	1.9	0.1	350	.	.	.	.	.	3/4 R	.	.	.	.	0	0	.	.
29 12 85	0730	1.8	0.1	345	.	.	.	.	.	HALF R	.	.	.	.	0	0	.	.
30 12 85	0730	1.9	0.1	350	.	.	.	.	.	HALF R	.	.	.	.	0	0	.	.
31 12 85	0730	1.8	0.1	350	.	.	.	.	.	HALF R	.	.	.	.	0	0	.	.

SITE NUMBER : 4303 OBSERVER CODE : 0

SITE D

BEACH PROTECTION AUTHORITY - COPECHECK OUTPUT

DATA READ FROM

SITE NUMBER : 4304 OBSERVER CODE : 0

GREEN ISLAND SITE D CAIRNS CITY

DATE DY MH YR	WAVE PERIOD HT	WAVE HT	WAVE DIRN	WAVE TYPE	SURF ZONE WIDTH	OFFS BAR	WIND SPEED	WIND DIRN	STATE OF TIDE	BERM ELEV	DIST TO BERM	DIST TO VEG	FORE- SHORE SLOPE	CURRENT SPEED	DIRN	SAND/S OR PHOTO	REMARK
3 1 85	0715	2.2	0.1	355	*	*	*	*	HIGH S	*	*	*	*	3	R	*	*
6 1 85	0715	1.9	0.1	50	*	*	*	*	HIGH R	*	*	*	*	3	L	*	*
7 1 85	0715	2.6	0.1	60	*	*	*	*	3/4 R	*	*	*	*	4	L	*	*
8 1 85	0715	2.0	0.1	60	*	*	*	*	3/4 R	*	*	*	*	2	L	*	*
9 1 85	0715	2.1	0.1	60	*	*	*	*	HALF R	*	*	*	*	2	L	*	*
10 1 85	0715	1.4	0.1	40	*	*	*	*	1/4 R	*	*	*	*	4	L	*	*
13 1 85	0715	1.3	0.1	65	*	*	*	*	LOW F	*	*	*	*	*	O	*	*
14 1 85	0715	4.3	0.2	50	*	*	*	*	3/4 F	*	*	*	*	2	R	*	*
16 1 85	0715	2.4	0.2	40	*	*	*	*	HIGH F	*	*	*	*	1	L	*	*
17 1 85	0715	3.5	0.3	50	*	*	*	*	HIGH S	*	*	*	*	3	L	*	*
18 1 85	0715	2.3	0.1	70	*	*	*	*	HIGH R	*	*	*	*	4	L	*	*
19 1 85	0715	3.1	0.2	330	*	*	*	*	3/4 R	*	*	*	*	2	R	*	*
21 1 85	0715	3.4	0.1	30	*	*	*	*	3/4 R	*	*	*	*	4	R	*	*
22 1 85	0715	4.2	0.1	320	*	*	*	*	HALF R	*	*	*	*	1	R	*	*
23 1 85	0715	1.0	0.1	5	*	*	*	*	HALF R	*	*	*	*	1	R	*	*
24 1 85	0715	1.3	0.1	350	*	*	*	*	HALF R	*	*	*	*	4	L	*	*
28 1 85	0715	2.1	0.1	70	*	*	*	*	1/4 R	*	*	*	*	3	L	*	*
29 1 85	0715	2.1	0.1	45	*	*	*	*	1/4 F	*	*	*	*	*	L	*	*
30 1 85	0715	2.0	0.2	70	*	*	*	*	3/4 F	*	*	*	*	5	L	*	*
31 1 85	0715	2.1	0.1	65	*	*	*	*	HIGH F	*	*	*	*	2	L	*	*
1 2 85	0715	2.7	0.1	55	*	*	*	*	HIGH F	*	*	*	*	1	R	*	*
2 2 85	0715	2.4	0.2	60	*	*	*	*	HIGH S	*	*	*	*	7	L	*	*
3 2 85	0715	3.2	0.2	60	*	*	*	*	HIGH R	*	*	*	*	6	L	*	*
4 2 85	0715	2.6	0.2	65	*	*	*	*	HIGH R	*	*	*	*	5	L	*	*
6 2 85	0715	2.2	0.1	45	*	*	*	*	HALF R	*	*	*	*	5	L	*	*
9 2 85	0715	2.4	0.1	55	*	*	*	*	1/4 R	*	*	*	*	5	L	*	*
11 2 85	0715	2.0	0.1	55	*	*	*	*	LOW R	*	*	*	*	5	L	*	*
12 2 85	0715	3.0	0.1	60	*	*	*	*	HALF F	*	*	*	*	4	L	*	*
16 2 85	0715	2.7	0.1	60	*	*	*	*	HIGH R	*	*	*	*	9	L	*	*

BEACH PROTECTION AUTHORITY - COPECHECK OUTPUT

GREEN ISLAND SITE D CAIRNS CITY													DATA READ FROM :				
SITE NUMBER : 4304 OBSERVER CODE : 0																	
DATE DY MH YR	WAVE PERIOD	WAVE HT	WAVE DIRN	WAVE TYPE	SURF ZONE	OFFS BAR	WIND SPEED	WIND DIRN	STATE OF TIDE	BERM ELEV	DIST TO BERM	DIST TO VEG	FORE- SHORE SLOPE	CURRENT SPEED	DIRN	SAND/S OR PHOTO	REMARK
17	2 85	0.1	60						HIGH R	*	*	*	*	2	L	*	
18	2 85	0.1	60						3/4 R	*	*	*	*	1	L	*	
19	2 85	0.1	65						3/4 R	*	*	*	*	1	L	*	
20	2 85	0.1	65						3/4 R	*	*	*	*	3	L	*	
24	2 85	0.1	350						HALF R	*	*	*	*	9	R	*	
25	2 85	0.1	340						HALF R	*	*	*	*	2	L	*	
26	2 85	0.1	340						3/4 R	*	*	*	*	6	R	*	
27	2 85	0.1	325						HIGH F	*	*	*	*	3	R	*	
2	3 85	0.1	60						HIGH F	*	*	*	*	5	L	*	
3	3 85	0.1	60						HIGH F	*	*	*	*	3	L	*	
4	3 85	0.1	55						HIGH R	*	*	*	*	1	R	*	
5	3 85	0.1	335						HIGH R	*	*	*	*	5	R	*	
6	3 85	0.1	335						HIGH R	*	*	*	*	8	R	*	
9	3 85	0.1	55						HALF R	*	*	*	*	6	L	*	
10	3 85	0.1	45						HALF R	*	*	*	*	4	L	*	
11	3 85	0.1	50						1/4 R	*	*	*	*	7	L	*	
12	3 85	0.1	50						1/4 F	*	*	*	*	8	L	*	
13	3 85	0.1	65						HALF F	*	*	*	*	2	L	*	
16	3 85	0.3	55						HIGH F	*	*	*	*	7	L	*	
23	3 85	0.2	65						3/4 R	*	*	*	*	5	L	*	
24	3 85	0.1	70						HALF R	*	*	*	*	7	L	*	
25	3 85	0.2	55						3/4 R	*	*	*	*	1	L	*	
26	3 85	0.2	55						3/4 R	*	*	*	*	1	L	*	
27	3 85	0.2	55						3/4 R	*	*	*	*	1	L	*	
2	4 85	0.1	60						HIGH F	*	*	*	*	1	L	*	
3	4 85	0.1	80						HIGH F	*	*	*	*	2	L	*	
4	4 85	0.1	80						3/4 R	*	*	*	*	1	R	*	
5	4 85	0.1	60						3/4 R	*	*	*	*	1	R	*	
6	4 85	0.1	60						3/4 R	*	*	*	*	1	R	*	
8	4 85	0.2	55						HALF R	*	*	*	*	2	L	*	
9	4 85	0.2	50						1/4 R	*	*	*	*	1	L	*	



BEACH PROTECTION AUTHORITY - COPECHECK OUTPUT

DATA READ FROM :

GREEN ISLAND SITE D CAIRNS CITY										SITE NUMBER : 4304				OBSERVER CODE : 0				
DATE	TIME	WAVE PERIOD	WAVE HT	WAVE DIRN	WAVE TYPE	SURF ZONE WIDTH	OFFS BAR	WIND SPEED	WIND DIRN	STATE OF TIDE	BERM ELEV	DIST TO BERM	DIST TO VEG	FORE-TO-SLOPE	CURRENT SPEED	DIRN	SAND/S OR PHOTO	REMARK
12 4 85	0715	1.4	0.2	60	*	*	*	*	*	HALF F	*	*	*	*	9	L	*	
17 4 85	0715	2.1	0.1	60	*	*	*	*	*	HIGH S	*	*	*	*	2	R	*	
18 4 85	0715	1.9	0.1	320	*	*	*	*	*	3/4 R	*	*	*	2	R	*		
19 4 85	0715	2.4	0.1	70	*	*	*	*	*	3/4 R	*	*	*	1	R	*		
23 4 85	0715	3.2	0.1	60	*	*	*	*	*	HALF R	*	*	*	5	L	*		
1 5 85	0700	2.4	0.3	60	*	*	*	*	*	HIGH F	*	*	*	2	L	*		
2 5 85	0715	2.6	0.3	60	*	*	*	*	*	HIGH S	*	*	*	1	L	*		
3 5 85	0715	3.3	0.3	55	*	*	*	*	*	HIGH R	*	*	*	6	L	*		
7 5 85	0745	2.3	0.1	70	*	*	*	*	*	HALF R	*	*	*	1	R	*		
8 5 85	0745	1.0	0.1	55	*	*	*	*	*	1/4 R	*	*	*	4	L	*		
10 5 85	0745	2.4	0.1	70	*	*	*	*	*	HALF F	*	*	*	1	L	*		
14 5 85	0745	4.3	0.2	50	*	*	*	*	*	1/4 F	*	*	*	7	L	*		
15 5 85	0745	1.8	0.3	80	*	*	*	*	*	HIGH F	*	*	*	8	L	*		
16 5 85	0745	11.1	0.2	30	*	*	*	*	*	HIGH F	*	*	*	8	L	*		
17 5 85	0745	3.6	0.3	50	*	*	*	*	*	HIGH F	*	*	*	6	R	*		
18 5 85	0745	11.7	0.3	65	*	*	*	*	*	HIGH F	*	*	*	7	L	*		
19 5 85	0745	9.1	0.2	70	*	*	*	*	*	HIGH F	*	*	*	6	L	*		
23 5 85	0745	6.2	0.2	70	*	*	*	*	*	HALF R	*	*	*	3	L	*		
24 5 85	0745	5.5	0.2	70	*	*	*	*	*	HIGH F	*	*	*	0	O	*		
26 5 85	0745	1.8	0.2	70	*	*	*	*	*	3/4 F	*	*	*	7	L	*		
29 5 85	0745	2.7	0.1	90	*	*	*	*	*	HALF F	*	*	*	2	L	*		
30 5 85	0745	2.4	0.1	75	*	*	*	*	*	HALF F	*	*	*	5	L	*		
31 5 85	0745	2.0	0.4	65	*	*	*	*	*	1/4 F	*	*	*	8	L	*		
1 6 85	0745	7.4	0.1	70	*	*	*	*	*	1/4 F	*	*	*	3	R	*		
6 6 85	0745	1.4	0.1	50	*	*	*	*	*	HALF R	*	*	*	1	L	*		
7 6 85	0745	2.7	0.1	60	*	*	*	*	*	1/4 S	*	*	*	5	L	*		
8 6 85	0745	2.4	0.1	70	*	*	*	*	*	3/4 F	*	*	*	0	O	*		
12 6 85	0745	6.3	0.1	70	*	*	*	*	*	HALF F	*	*	*	2	R	*		
13 6 85	0745	2.5	0.2	75	*	*	*	*	*	HALF F	*	*	*	2	L	*		
14 6 85	0745	4.2	0.2	75	*	*	*	*	*	1/4 R	*	*	*	6	L	*		
15 6 85	0745	2.6	0.2	50	*	*	*	*	*	LOW F	*	*	*	2	L	*		

BEACH PROTECTION AUTHORITY - COPECHECK OUTPUT

GREEN ISLAND SITE D CAIRNS CITY										SITE NUMBER : 4304			OBSERVER CODE : 0		DATA READ FROM :			
DATE	TIME	WAVE PERIOD	WAVE HT	WAVE DIRN	WAVE TYPE	SURF ZONE WIDTH	OFFS BAR	WIND SPEED	WIND DIRN	STATE OF TIDE	BERM ELEV	DIST TO BERM	DIST TO VEG	FORE-TO-SHORE SLOPE	CURRENT SPEED	DIRN	SAND/S OR PHOTO	REMARK
19	6 85	0745	4.9	0.1	70					HIGH R				*	4	L	*	
20	6 85	0745	1.9	0.1	70					3/4 R				*	6	L	*	
21	6 85	0745	1.7	0.1	70					3/4 R				*	7	L	*	
22	6 85	0745	2.5	0.1	60					1/4 R				*	3	L	*	
23	6 85	0745	2.1	0.1	60					LOW S				*	2	L	*	
25	6 85	0745	1.8	0.1	70					3/4 F				*	4	L	*	
26	6 85	0745	1.9	0.1	60					HALF F				*	1	L	*	
27	6 85	0745	1.8	0.2	60					HALF F				*	4	L	*	
28	6 85	0745	2.0	0.4	65					1/4 F				*	6	L	*	
29	6 85	0745	6.3	0.2	50					HIGH F				*	3	R	*	
30	6 85	0745	5.5	0.1	65					HIGH F				*	3	R	*	
3	7 85	0745	2.2	0.2	55					3/4 R				*	4	L	*	
7	7 85	0745	1.7	0.1	60					LOW S				*	2	L	*	
10	7 85	0745	1.8	0.1	70					HALF F				*	1	R	*	
11	7 85	0745	1.5	0.1	70					HALF F				*	1	L	*	
12	7 85	0745	1.2	0.1	50					1/4 F				*	3	L	*	
13	7 85	0745	1.4	0.1	70					1/4 F				*	4	L	*	
14	7 85	0745	1.6	0.1	65					LOW F				*	4	L	*	
18	7 85	0745	1.9	0.1	70					3/4 R				*	3	4	*	
19	7 85	0725	3.2	0.1	60					3/4 R				*	0	0	*	
20	7 85	0730	2.2	0.1	80					HALF R				*	2	L	*	
22	7 85	0740	3.2	0.1	70					LOW R				*	2	L	*	
23	7 85	0755	2.1	0.1	25					LOW R				*	2	L	*	
27	7 85	0745	1.9	0.1	60					1/4 F				*	9	L	*	
28	7 85	0745	2.5	0.1	70					1/4 F				*	1	4	*	
31	7 85	0725	2.3	0.1	60					3/4 R				*	1	L	*	
1	8 85	0745	1.4	0.1	70					HALF R				*	1	L	*	
2	8 85	0745	2.3	0.1	70					HALF R				*	8	L	*	
3	8 85	0735	2.0	0.1	70					HALF R				*	5	L	*	
4	8 85	0735	2.2	0.1	60					HALF R				*	2	L	*	
5	8 85	0800	1.4	0.1	55					1/4 R				*	6	L	*	
7	8 85	0735	2.4	0.1	330					LOW R				*	3	R	*	

BEACH PROTECTION AUTHORITY - COPECHECK OUTPUT

DATA READ FROM :

GREEN ISLAND SITE D CAIRNS CITY SITE NUMBER : 4304 OBSERVER CODE : 0

DATE DY MH YR	WAVE PERIOD HT	WAVE DIRN	WAVE TYPE	SURF ZONE WIDTH	OFFS BAR	WIND SPEED	WIND DIRN	STATE OF TIDE	BERM ELEV	DIST TO BERM	DIST TO VEG	FORE- SHORE SLOPE	CURRENT DIRN	SAND/S OR PHOTO	REMARK
8 8 85	1.4	0.1	70	*	*	*	*	1/4 F	*	*	*	*	R	*	*
9 8 85	1.9	0.1	70	*	*	*	*	HALF F	*	*	*	*	L	*	*
10 8 85	1.7	0.1	80	*	*	*	*	HALF F	*	*	*	*	O	*	*
11 8 85	1.8	0.1	50	*	*	*	*	HALF F	*	*	*	*	O	*	*
12 8 85	1.0	0.1	45	*	*	*	*	3/4 F	*	*	*	*	L	*	*
14 8 85	1.4	0.1	60	*	*	*	*	HIGH S	*	*	*	*	L	*	*
15 8 85	2.5	0.1	60	*	*	*	*	3/4 R	*	*	*	*	L	*	*
16 8 85	2.0	0.1	70	*	*	*	*	3/4 R	*	*	*	*	R	*	*
17 8 85	2.4	0.1	50	*	*	*	*	HALF R	*	*	*	*	L	*	*
20 8 85	2.6	0.1	60	*	*	*	*	1/4 R	*	*	*	*	L	*	*
21 8 85	1.9	0.1	70	*	*	*	*	LOW S	*	*	*	*	L	*	*
22 8 85	1.8	0.1	70	*	*	*	*	LOW R	*	*	*	*	L	*	*
23 8 85	3.5	0.1	30	*	*	*	*	3/4 F	*	*	*	*	L	*	*
24 8 85	4.4	0.1	40	*	*	*	*	HALF F	*	*	*	*	L	*	*
25 8 85	1.9	0.1	60	*	*	*	*	HALF F	*	*	*	*	L	*	*
27 8 85	2.1	0.1	340	*	*	*	*	HIGH F	*	*	*	*	L	*	*
28 8 85	1.9	0.1	70	*	*	*	*	3/4 R	*	*	*	*	L	*	*
29 8 85	2.7	0.1	50	*	*	*	*	3/4 R	*	*	*	*	R	*	*
30 8 85	2.0	0.1	70	*	*	*	*	HALF R	*	*	*	*	L	*	*
1 9 85	2.2	0.1	60	*	*	*	*	HALF R	*	*	*	*	O	*	*
2 9 85	1.8	0.1	70	*	*	*	*	3/4 R	*	*	*	*	L	*	*
3 9 85	1.9	0.1	70	*	*	*	*	3/4 R	*	*	*	*	L	*	*
4 9 85	2.6	0.1	70	*	*	*	*	HALF R	*	*	*	*	L	*	*
6 9 85	2.0	0.1	60	*	*	*	*	1/4 R	*	*	*	*	L	*	*
7 9 85	1.8	0.2	70	*	*	*	*	HALF F	*	*	*	*	L	*	*
8 9 85	1.9	0.1	70	*	*	*	*	3/4 F	*	*	*	*	L	*	*
11 9 85	4.4	0.1	70	*	*	*	*	3/4 F	*	*	*	*	R	*	*
12 9 85	4.8	0.1	0	*	*	*	*	HIGH F	*	*	*	*	R	*	*
13 9 85	3.1	0.1	80	*	*	*	*	HIGH F	*	*	*	*	R	*	*
14 9 85	5.0	0.1	80	*	*	*	*	3/4 R	*	*	*	*	O	*	*
15 9 85	2.6	0.1	70	*	*	*	*	3/4 R	*	*	*	*	L	*	*
16 9 85	2.6	0.1	65	*	*	*	*	HALF F	*	*	*	*	O	*	*
18 9 85	1.5	0.1	60	*	*	*	*	HALF R	*	*	*	*	L	*	*
19 9 85	1.2	0.1	0	*	*	*	*	HALF R	*	*	*	*	L	*	*
20 9 85	1.4	0.1	330	*	*	*	*	HIGH R	*	*	*	*	O	*	*

BEACH PROTECTION AUTHORITY - COPECHECK OUTPUT

GREEN ISLAND SITE D CAIRNS CITY										SITE NUMBER : 4304 OBSERVER CODE : 0				DATA READ FROM :				
DATE	TIME	WAVE PERIOD	WAVE HT	WAVE DIRN	WAVE TYPE	SURF ZONE WIDTH	OFFS BAR	WIND SPEED	WIND DIRN	STATE OF TIDE	BERM ELEV	DIST TO BERM	DIST TO VEG	FORE SHORE SLOPE	SPEED	CURRENT DIRN	SAND/S OR PHOTO	REMARK
21 9 85	0745	1.1	0.1	70	*	*	*	*	*	3/4 F	*	*	*	*	0	0	*	*
23 9 85	0730	1.1	0.2	60	*	*	*	*	*	HALF F	*	*	*	*	6	L	*	*
25 9 85	0745	3.6	0.1	340	*	*	*	*	*	HIGH F	*	*	*	*	1	R	*	*
26 9 85	0745	2.6	0.1	350	*	*	*	*	*	HIGH F	*	*	*	*	1	R	*	*
27 9 85	0745	2.5	0.1	340	*	*	*	*	*	3/4 R	*	*	*	*	4	L	*	*
28 9 85	0745	3.2	0.1	0	*	*	*	*	*	3/4 R	*	*	*	*	0	O	*	*
29 9 85	0745	1.6	0.1	80	*	*	*	*	*	3/4 R	*	*	*	*	7	L	*	*
2 10 85	0745	2.1	0.1	60	*	*	*	*	*	3/4 R	*	*	*	*	1	R	*	*
3 10 85	0745	2.3	0.1	60	*	*	*	*	*	HALF R	*	*	*	*	3	L	*	*
4 10 85	0800	2.3	0.1	70	*	*	*	*	*	HALF R	*	*	*	*	1	L	*	*
5 10 85	0745	3.1	0.1	60	*	*	*	*	*	1/4 R	*	*	*	*	4	L	*	*
6 10 85	0745	3.0	0.1	70	*	*	*	*	*	1/4 R	*	*	*	*	6	L	*	*
7 10 85	0745	4.1	0.1	60	*	*	*	*	*	HALF F	*	*	*	*	0	O	*	*
9 10 85	0715	3.2	0.1	70	*	*	*	*	*	HIGH F	*	*	*	*	1	R	*	*
10 10 85	0745	3.0	0.1	0	*	*	*	*	*	3/4 F	*	*	*	*	0	O	*	*
11 10 85	0745	3.9	0.1	40	*	*	*	*	*	HIGH F	*	*	*	*	7	R	*	*
12 10 85	0730	1.7	0.1	50	*	*	*	*	*	HIGH F	*	*	*	*	3	L	*	*
14 10 85	0730	2.1	0.1	50	*	*	*	*	*	3/4 R	*	*	*	*	4	L	*	*
15 10 85	0745	2.9	0.1	40	*	*	*	*	*	HALF R	*	*	*	*	6	L	*	*
16 10 85	0745	3.5	0.1	340	*	*	*	*	*	HALF R	*	*	*	*	4	L	*	*
17 10 85	0745	3.9	0.1	330	*	*	*	*	*	HALF R	*	*	*	*	3	L	*	*
18 10 85	0745	1.4	0.1	350	*	*	*	*	*	HALF R	*	*	*	*	5	R	*	*
19 10 85	0745	2.2	0.1	20	*	*	*	*	*	1/4 R	*	*	*	*	6	R	*	*
20 10 85	0745	2.9	0.1	0	*	*	*	*	*	3/4 F	*	*	*	*	6	R	*	*
21 10 85	0745	1.5	0.2	350	*	*	*	*	*	HALF F	*	*	*	*	1	R	*	*
23 10 85	0745	2.0	0.1	350	*	*	*	*	*	HIGH F	*	*	*	*	2	R	*	*
24 10 85	0745	2.0	0.1	350	*	*	*	*	*	HIGH F	*	*	*	*	1	R	*	*
25 10 85	0745	3.7	0.1	70	*	*	*	*	*	HIGH F	*	*	*	*	1	L	*	*
26 10 85	0745	2.6	0.1	70	*	*	*	*	*	3/4 R	*	*	*	*	1	L	*	*

BEACH PROTECTION AUTHORITY - COPECHECK OUTPUT

DATA READ FROM :

GREEN ISLAND SITE D CAIRNS CITY

SITE NUMBER : 4304 OBSERVER CODE : 0

DATE DY MH YR	WAVE PERIOD HT	WAVE DIRN HT	WAVE TYPE	SURF ZONE WIDTH	OFFS BAR	WIND SPEED	WIND DIRN	STATE OF TIDE	BERM ELEV	DIST TO BERM	DIST TO VEG	FORE- SHORE SLOPE	CURRENT SPEED	DIRN	SAND/S OR PHOTO	REMARK
27 10 85	2.0	0.1	70	*	*	*	*	3/4 R	*	*	*	*	0	0	*	*
28 10 85	1.8	0.2	65	*	*	*	*	3/4 R	*	*	*	*	2	R	*	*
30 10 85	1.8	0.1	65	*	*	*	*	HALF R	*	*	*	*	1	L	*	*
31 10 85	1.9	0.1	60	*	*	*	*	HALF R	*	*	*	*	8	L	*	*
1 11 85	1.6	0.1	60	*	*	*	*	HALF R	*	*	*	*	9	L	*	*
2 11 85	1.5	0.1	60	*	*	*	*	HALF R	*	*	*	*	6	L	*	*
3 11 85	3.4	0.1	60	*	*	*	*	HALF R	*	*	*	*	0	O	*	*
4 11 85	3.2	0.1	70	*	*	*	*	HALF R	*	*	*	*	3	L	*	*
5 11 85	3.3	0.1	70	*	*	*	*	3/4 F	*	*	*	*	3	L	*	*
6 11 85	2.6	0.1	60	*	*	*	*	HALF F	*	*	*	*	0	O	*	*
7 11 85	1.4	0.1	10	*	*	*	*	HALF F	*	*	*	*	4	L	*	*
8 11 85	2.0	0.1	70	*	*	*	*	HALF F	*	*	*	*	5	L	*	*
9 11 85	2.1	0.1	70	*	*	*	*	HALF F	*	*	*	*	1	L	*	*
10 11 85	2.2	0.1	60	*	*	*	*	HIGH F	*	*	*	*	2	L	*	*
11 11 85	2.8	0.1	70	*	*	*	*	3/4 R	*	*	*	*	2	L	*	*
12 11 85	2.4	0.2	60	*	*	*	*	3/4 R	*	*	*	*	4	L	*	*
15 11 85	2.5	0.1	340	*	*	*	*	HALF R	*	*	*	*	2	L	*	*
16 11 85	1.6	0.1	0	*	*	*	*	HALF R	*	*	*	*	2	R	*	*
17 11 85	1.3	0.1	350	*	*	*	*	LOW R	*	*	*	*	2	R	*	*
18 11 85	1.6	0.1	355	*	*	*	*	3/4 F	*	*	*	*	1	R	*	*
19 11 85	2.1	0.2	0	*	*	*	*	HALF F	*	*	*	*	9	R	*	*
20 11 85	1.5	0.1	10	*	*	*	*	HALF F	*	*	*	*	0	O	*	*
21 11 85	1.5	0.1	5	*	*	*	*	HIGH F	*	*	*	*	1	R	*	*
22 11 85	2.0	0.1	350	*	*	*	*	HIGH F	*	*	*	*	7	R	*	*
23 11 85	1.7	0.1	345	*	*	*	*	HIGH F	*	*	*	*	10	R	*	*
25 11 85	2.9	0.1	355	*	*	*	*	HIGH F	*	*	*	*	5	L	*	*
26 11 85	2.2	0.2	335	*	*	*	*	3/4 R	*	*	*	*	8	R	*	*
27 11 85	2.4	0.1	330	*	*	*	*	HIGH R	*	*	*	*	8	R	*	*
28 11 85	2.0	0.1	335	*	*	*	*	3/4 R	*	*	*	*	12	R	*	*
29 11 85	1.7	0.1	335	*	*	*	*	HIGH F	*	*	*	*	8	R	*	*
30 11 85	1.8	0.1	340	*	*	*	*	HALF R	*	*	*	*	7	R	*	*

BEACH PROTECTION AUTHORITY - COPECHECK OUTPUT

GREEN ISLAND SITE D CAIRNS CITY										SITE NUMBER : 4304			OBSERVER CODE : 0		DATA READ FROM :				
DATE DY MH YR	TIME	WAVE PERIOD	WAVE HT	WAVE DIRN	WAVE TYPE	SURF ZONE	OFFS BAR	WIND SPEED	WIND DIRN	STATE OF TIDE	BERM ELEV	DIST TO BERM	DIST TO VEG	DIST TO SHORE	FORE- SHORE SLOPE	CURRENT SPEED	DIRN	SAND/S OR PHOTO	REMARK
1	12 85	0730	1.5	0.1	35	.	.	.	.	HALF R	.	.	.	.	.	3	L	.	.
2	12 85	0730	1.6	0.1	345	.	.	.	.	HALF R	.	.	.	.	.	4	R	.	.
3	12 85	0730	1.9	0.1	325	.	.	.	.	1/4 R	.	.	.	.	.	4	R	.	.
4	12 85	0730	1.7	0.1	350	.	.	.	.	LOW R	.	.	.	.	.	4	R	.	.
5	12 85	0730	1.5	0.1	80	.	.	.	.	1/4 F	.	.	.	.	.	4	L	.	.
6	12 85	0715	1.6	0.1	350	.	.	.	.	HALF F	.	.	.	.	.	0	O	.	.
7	12 85	0730	2.0	0.1	355	.	.	.	.	3/4 F	.	.	.	.	.	1	R	.	.
9	12 85	0730	3.1	0.1	45	.	.	.	.	HIGH F	.	.	.	.	.	1	L	.	.
10	12 85	0730	3.7	0.1	.	.	.	.	.	3/4 R	.	.	.	.	.	1	R	.	.
11	12 85	0730	2.1	0.1	340	.	.	.	.	3/4 R	.	.	.	.	.	7	R	.	.
16	12 85	0745	1.9	0.1	30	.	.	.	.	1/4 R	.	.	.	.	.	2	R	.	.
17	12 85	0745	1.5	0.1	340	.	.	.	.	1/4 R	.	.	.	.	.	2	R	.	.
18	12 85	0745	2.0	0.1	350	.	.	.	.	1/4 F	.	.	.	.	.	5	R	.	.
20	12 85	0755	1.4	0.1	350	.	.	.	.	3/4 F	.	.	.	.	.	1	L	.	.
21	12 85	0730	1.9	0.1	30	.	.	.	.	HIGH F	.	.	.	.	.	1	L	.	.
22	12 85	0730	1.9	0.1	340	.	.	.	.	HIGH F	.	.	.	.	.	2	R	.	.
23	12 85	0715	2.1	0.1	350	.	.	.	.	HIGH F	.	.	.	.	.	2	R	.	.
24	12 85	0745	1.9	0.1	345	.	.	.	.	3/4 R	.	.	.	.	.	0	O	.	.
27	12 85	0730	1.8	0.1	340	.	.	.	.	3/4 R	.	.	.	.	.	1	R	.	.
28	12 85	0730	1.8	0.1	340	.	.	.	.	3/4 R	.	.	.	.	.	0	O	.	.
29	12 85	0730	1.8	0.1	340	.	.	.	.	HALF R	.	.	.	.	.	0	O	.	.
30	12 85	0730	1.8	0.1	340	.	.	.	.	HALF R	.	.	.	.	.	1	R	.	.
31	12 85	0730	1.8	0.1	335	.	.	.	.	HALF R	.	.	.	.	.	0	O	.	.