



NOTICE TO MARINERS

006 of 2025

Issued by Townsville Maritime Region on 6 January 2025

Area: North Queensland
Locality: Abbot Point Pilotage area, Great Barrier Marine Park and Coral Sea
Activity: Space Launch – Safety exclusion area/debris hazard area

Mariners are advised that:

Bowen Orbital Spaceport is expected to commence Space vehicle launch operations from January 2025. Prior to a launch, a safety exclusion area will be activated. Abbot Point VTS will broadcast when the safety exclusion area is activated and again to cancel the safety exclusion area via VHF Channels 11, 12 and 16.

Mariners are advised that a person must not anchor, berth, moor or operate a ship (other than a ship owned and/or operated by the entities listed in Schedule B) within the safety exclusion area as described in Schedule A below:

Schedule A

Part of the waters of Abbot Point Pilotage Area bound by the coordinates below.

Abbot Point Pilotage Area Launch Hazard Area	Latitude	Longitude	Launch dates and timings will be announced on www.gspace.com/missions Broadcasts on VHF Channel 12 and 16
	19° 55.608'S	148° 05.186'E	
	19° 50.442'S	148° 12.642'E	
	19° 54.930'S	148° 20.862'E	
	19° 57.492'S	148° 13.224'E	

And as shown on the map *S11-688 Space Launch - Debris Hazard Zone*

Schedule B

- (a) Queensland Police Service
- (b) Department of Transport and Main Roads, Maritime Safety Queensland
- (c) A ship authorised to assist with the monitoring and management of the safety exclusion area.

For the waters described in Schedule A above, the safety exclusion area shall commence one (1) hour prior to any space launch and remain active until 30 minutes after the space launch is completed (or as varied due to continuing hazards in the safety exclusion area). The safety exclusion area will similarly be rescinded if a programmed space launch is cancelled.

Mariners are also advised that the space launch hazard area extends beyond the safety exclusion area into that part of the waters of Australian Territorial Sea, Great Barrier Reef Marine Park (GBRMP) and the Coral Sea as described below;

Australian Territorial Sea, GBRMP and Coral Sea Waters	Latitude	Longitude	Launch dates and timings will be announced on www.gspace.com/missions
	Commencing at position;		
	19° 50.442' S	148° 12.642' E	
	19° 35.916' S	148° 31.572' E	

Space Launch Hazard Area	19° 11.412' S	149° 03.504' E	Broadcasts on VHF Channel 11, 14 and 16 (subject to VHF range)
	18° 26.448' S	150° 29.700' E	
	18° 52.956' S	150° 45.000' E	
	19° 32.094' S	149° 28.974' E	
	19° 48.636' S	148° 39.648' E	
	19° 54.930' S	148° 20.862' E	
	and back to the point of commencement		

And as shown on the map *S11-688 Space Launch - Debris Hazard Zone*.

For the waters described above as “Australian Territorial Sea, GBRMP and Coral Sea Space Launch Hazard Area”, the hazard area will commence one hour prior to the launch and shall remain active until 2 hours after the rocket launch is completed (or as varied due to continuing hazards in the safety exclusion area).

The safety exclusion area will similarly be rescinded if a programmed space launch is cancelled.

Mariners are advised that during a launch debris may fall within the safety exclusion area and the *Space Launch - Debris Hazard Zone*.

Mariners are advised to remain clear of the safety exclusion zone until the deactivation of the safety exclusion area.

Launch information will be broadcast on VHF channel 16, 12, 11 and 14 as follows

Launch – 6 hours. Initial alert, safety exclusion area active, launch scheduled, vessels advised to clear the area.

Launch – 1 hour. Warning - safety exclusion area active, launch imminent in 1 hour, vessels must clear the hazard area.

Launch – Count down commenced. Warning - safety exclusion area active - launch imminent.

Launch – completed – All Clear - safety exclusion area deactivated.

Launch information and updates will be provided at [Missions | Gilmour Space \(gspace.com\)](https://www.gspace.com)

Gilmore Space Launch Information is available on telephone **+61 7 56189043**

Mariners are advised to remain clear of an active safety exclusion area and to navigate with extreme caution.

Refer to notice:

Cancel notice:

AUS charts affected: AUS 255, AUS 826, AUS 4060

ENC Cells affected: AU5ABP01, AU320148, AU320149

Latitude and longitude positions are on WGS84 horizontal datum and are compatible with GDA2020 datum.

For further information about this notice, please contact:


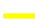



The Townsville Regional Harbour Master’s office:

Phone 07 4421 8100

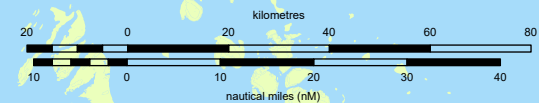
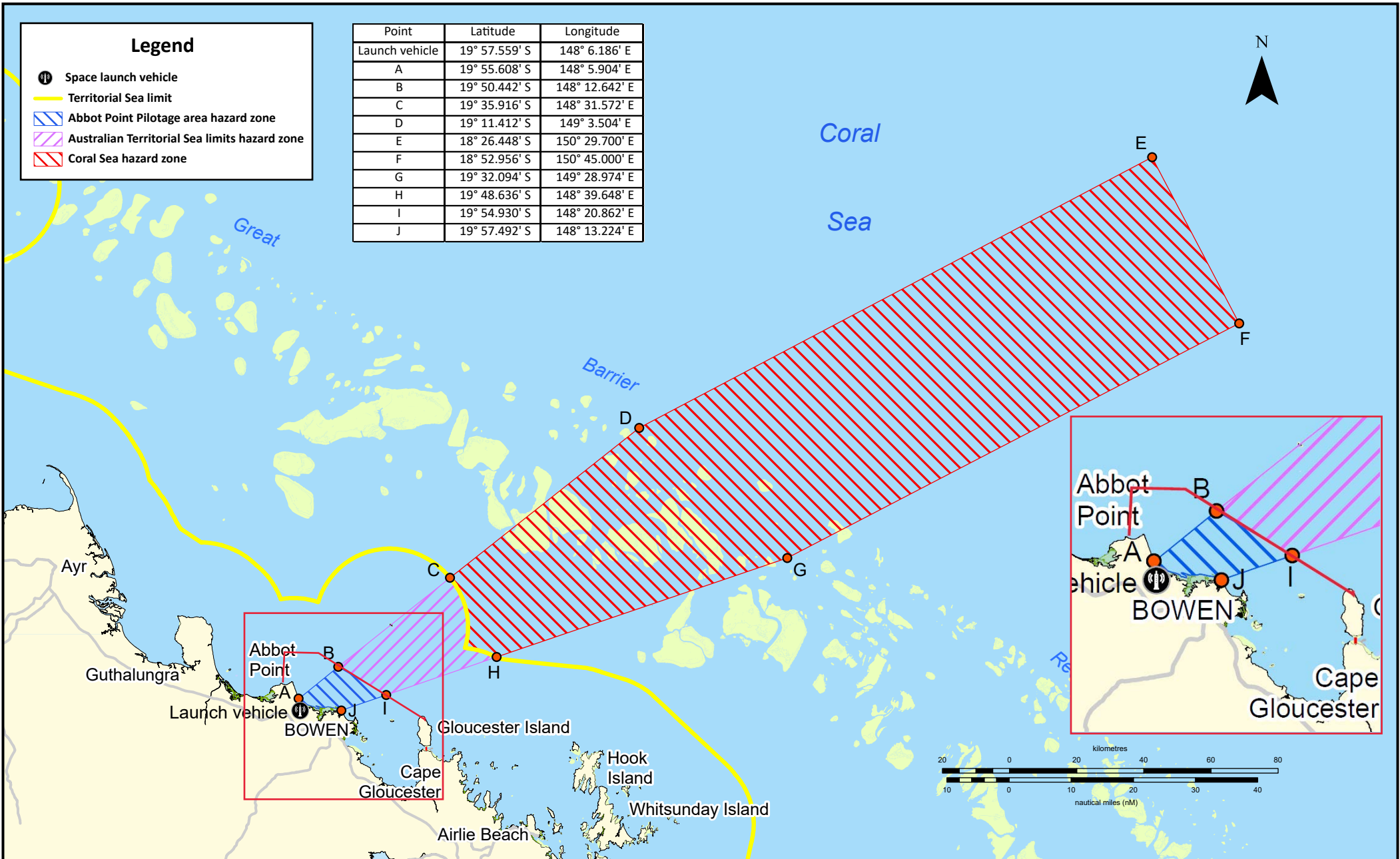
Email: vtstowns@msq.qld.gov.au

Notice authorised by: Regional Harbour Master (Townsville) - Maritime Safety Queensland

Legend

-  Space launch vehicle
-  Territorial Sea limit
-  Abbot Point Pilotage area hazard zone
-  Australian Territorial Sea limits hazard zone
-  Coral Sea hazard zone

Point	Latitude	Longitude
Launch vehicle	19° 57.559' S	148° 6.186' E
A	19° 55.608' S	148° 5.904' E
B	19° 50.442' S	148° 12.642' E
C	19° 35.916' S	148° 31.572' E
D	19° 11.412' S	149° 3.504' E
E	18° 26.448' S	150° 29.700' E
F	18° 52.956' S	150° 45.000' E
G	19° 32.094' S	149° 28.974' E
H	19° 48.636' S	148° 39.648' E
I	19° 54.930' S	148° 20.862' E
J	19° 57.492' S	148° 13.224' E



Map S11-688

Map Datum: GDA2020
Projection: UTM (MGA Zone 55)

Prepared 16 April 2024
Maritime Safety Queensland
Port Operations and VTS - Spatial Services

Navigation constraints issued by Regional Harbour Master (Townsville)

SPACE LAUNCH - DEBRIS HAZARD ZONE ABBOT POINT

© The State of Queensland 2024
Transport and Main Roads

