

REFERENCE

Mapping Unit Code	Series Affiliation	Major Attributes of Dominant Soil*	Great Soil Group	Main Principal Profile Forms
-------------------	--------------------	------------------------------------	------------------	------------------------------

SOILS OF THE BURDEKIN AND HAUGHTON RIVER ALLUVIAL PLAINS

LOW LYING FLATS

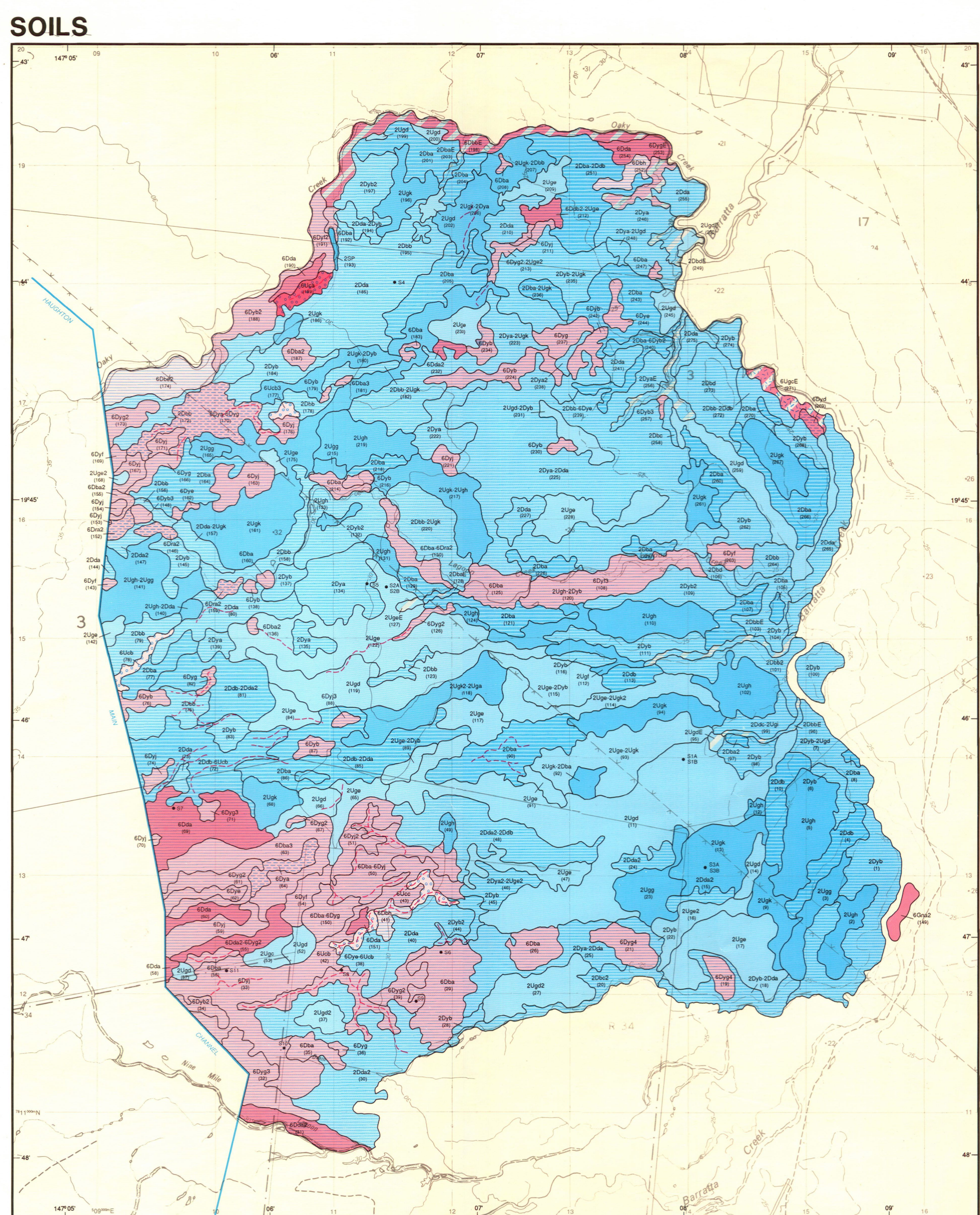
2Uga	Barratta	0.01-0.02 m weak to moderate self mulch over grey to dark medium to heavy clay to 0.05-0.10 m over alkaline grey to dark medium to heavy clay to 1.00-1.25 m over brown medium to heavy clay to 1.50+ m. Normal gilgai, less than 0.10 m vertical interval.	Grey clay - black earth	Ug5.20 Ug5.17
2Ugb	Barratta	Weakly self mulching to hard setting surface over bleached, brown-mottled grey to dark light to light medium clay to 0.05-0.15 m over neutral to moderately alkaline grey medium to heavy clay to 1.20 m over moderately to strongly alkaline brown light to light medium clay to 1.50+ m. Normal gilgai, 0.05-0.20 m vertical interval.	(bleached)** grey clay - (bleached) black earth	Ug3.2 Ug3.1
2Ugc	Barratta	Weakly self mulching to hard setting surface over bleached, brown-mottled grey to brown light to light medium clay to 0.10-0.25 m over brown-mottled grey to brown medium clay to 1.00-1.20 m over grey to brown light medium to medium heavy clay to 1.50+ m, strongly alkaline at and below 0.90-1.20 m. Normal gilgai, 0.10-0.30 m vertical interval.	(bleached) grey and brown clay	Ug3.2 Ug3.3
2Ugd	Barratta	Weakly self mulching to hard setting surface over frequently bleached, brown-mottled grey to brown or dark light to light medium clay to 0.05-0.25 m over brown-mottled grey to brown medium to medium heavy clay to 0.80-1.30 m over brown light medium to medium clay to 1.50+ m, strongly alkaline above or at 0.60 m. Normal gilgai, 0.05-0.30 m vertical interval.	(bleached) grey clay - grey and brown clay - black earth	Ug3.2 Ug3.25 Ug3.3 Ug5.17
2Uge	Barratta	0.01-0.02 m moderate self mulch over brown-mottled grey medium clay to 0.05-0.20 m over brown-mottled grey medium heavy clay to 1.20-1.50+ m over grey to brown medium clay to 1.50+ m, strongly alkaline at 1.20-1.50 m. Normal gilgai, 0.10-0.50 m vertical interval.	Grey clay	Ug5.25 Ug5.28
2Ugf	Barratta	0.01-0.02 m moderate self mulch over occasionally bleached, brown-mottled grey to dark medium clay to 0.10-0.20 m over grey medium to medium heavy clay to 0.80-1.20 m over brown to yellow-brown light to medium clay to 1.50+ m, strongly alkaline at and below 0.60-0.90 m. Normal gilgai, 0.10-0.30 m vertical interval.	Grey clay - (bleached) grey clay-black earth	Ug5.26 Ug3.2 Ug5.17
2Ugh	Barratta, Yalinga	0.01-0.02 m moderate to strong self mulch over brown-mottled grey medium to medium heavy clay to 0.10-0.15 m over grey medium to medium heavy clay to 1.00-1.50+ m over brown light to medium heavy clay to 1.50+ m, strongly alkaline at and below 0.30 m. Normal gilgai, 0.10-0.30 m vertical interval.	Grey clay	Ug5.29 Ug5.28 Ug5.25
2Ugi	Barratta	Normal gilgai 0.10-0.30 m vertical interval. Mounds 0.01-0.02 m weak to strong self mulch over grey to dark medium to medium heavy clay to 1.00-1.50+ m over brown to yellow-brown light medium to medium clay D horizon to 1.50+ m, strongly alkaline at and below 0.30-0.60 m. Depression: Weakly cracking, hard setting surface over bleached, brown-mottled grey to dark light to light medium clay to 0.05-0.10 m over brown-mottled grey light medium to medium clay to 0.30-0.60 m over grey to yellow-brown medium clay to 0.70-1.20 m over brown to yellow-brown light to light medium clay D horizon to 1.50+ m, strongly alkaline at and below 0.60-0.90 m.	Grey clay - black earth (bleached) grey clay - (bleached) black earth	Ug5.2 Ug5.29 Ug5.17 Ug3.2 Ug3.1

SLIGHTLY ELEVATED FLATS

2Dba	Dowie	0.05-0.12 m brown loam, fine sandy to clay loam A horizon bleached throughout or near base over brown medium clay B horizon to 0.70-1.50+ m over brown to yellow-brown light to light medium clay D horizon to 1.50+ m, strongly alkaline at and below 0.30 m.	Solodic-solodized solonetz	Dd1.33 Dd1.43
2Dbb	Oakey	0.05-0.15 m dark to brown loam, fine sandy to clay loam A1 horizon over bleached A2 horizon to 0.12-0.20 m over brown medium clay B horizon to 0.70-1.50+ m over brown to yellow-brown light to light medium clay D horizon to 1.50+ m, strongly alkaline at and below 0.60 m.	Solodic-solodized solonetz	Dd1.33 Dd1.43
2Dbc	Oakey	0.05-0.25 m dark to grey loam, fine sandy to clay loam A horizon over bleached A2 horizon to 0.20-0.25 m over brown-mottled grey to brown medium clay B horizon to 0.70-1.30 m over brown to yellow-brown fine sandy clay to light medium clay D horizon to 1.50+ m, strongly alkaline at and below 0.90-1.20 m.	Solodic-solodized solonetz	Dd1.33 Dd1.43
2Dbd	Oakey	0.10-0.20 m brown-mottled dark to brown loam, fine sandy to clay loam A1 horizon over bleached A2 horizon to 0.20-0.35 m over dark to brown medium clay B horizon to 0.70-1.00 m over brown to yellow-brown fine sandy clay to medium clay D horizon to 1.50+ m, strongly alkaline at and below 0.60 m.	Solodic-solodized solonetz	Dd1.33 Dd1.43
2Dbe	Oakey	0.05-0.12 m brown-mottled dark to brown loam, fine sandy to clay loam A horizon bleached throughout or near base over frequently brown-mottled grey to brown medium clay B horizon to 0.60-1.20 m over brown to yellow-brown fine sandy clay to light medium clay D horizon to 1.50+ m, strongly alkaline at and below 0.60 m. Frequently normal gilgai, less than 0.10 m vertical interval.	Solodic-solodized solonetz	Dd1.33 Dd1.43 Dd1.33 Dd1.43
2Dbf	Oakey	0.05-0.10 m brown-mottled dark to brown loam, fine sandy to clay loam A1 horizon over bleached A2 horizon to 0.12-0.30 m over dark to grey medium to medium heavy clay B horizon to 0.60-1.20 m over brown to yellow-brown fine sandy clay to light medium clay D horizon to 1.50+ m, strongly alkaline above or at 0.60 m.	Solodic-solodized solonetz	Dd1.33 Dd1.43 Dd1.33
2Dbg	Oakey	0.05-0.12 m brown-mottled dark to brown loam, fine sandy to clay loam A horizon over bleached A2 horizon to 0.20-0.30 m over dark to grey medium to medium heavy clay B horizon to 0.60-1.20 m over brown to yellow-brown fine sandy clay to light medium clay D horizon to 1.50+ m, strongly alkaline at and below 0.60-0.90 m.	Solodic-solodized solonetz	Dd1.33 Dd1.43 Dd1.33
2Dbh	Dowie	0.05-0.12 m brown-mottled dark to brown loam, fine sandy to clay loam A horizon bleached throughout or near base over dark to grey medium to medium heavy clay B horizon to 0.60-1.00 m over brown to yellow-brown light to medium clay D horizon to 1.50+ m, strongly alkaline at and below 0.30 m.	Solodic-solodized solonetz	Dd1.33 Dd1.33
2Dbi-2Ugi		Linear gilgai complex. Vertical interval of gilgai less than 0.05 m, 60-70% depression. Depression (D2c): 0.05-0.20 m brown-mottled dark clay loam A1 horizon over bleached A2 horizon to 0.20-0.35 m over strongly alkaline dark to grey medium to heavy clay B horizon to 0.80-1.20 m over grey to brown medium to heavy clay B horizon to 1.00-1.40 m over yellow-brown light medium to medium heavy clay D horizon to 1.50+ m. Mounds (2Ugi): 0.01-0.02 m moderate to strong self mulch over grey to brown medium to heavy clay to 0.10-0.20 m over strongly alkaline grey to brown medium to heavy clay to 1.00-1.30 m over yellow-brown light to light medium clay D horizon to 1.50+ m.	Solodic-solodized solonetz	Dd1.33 Dd1.33

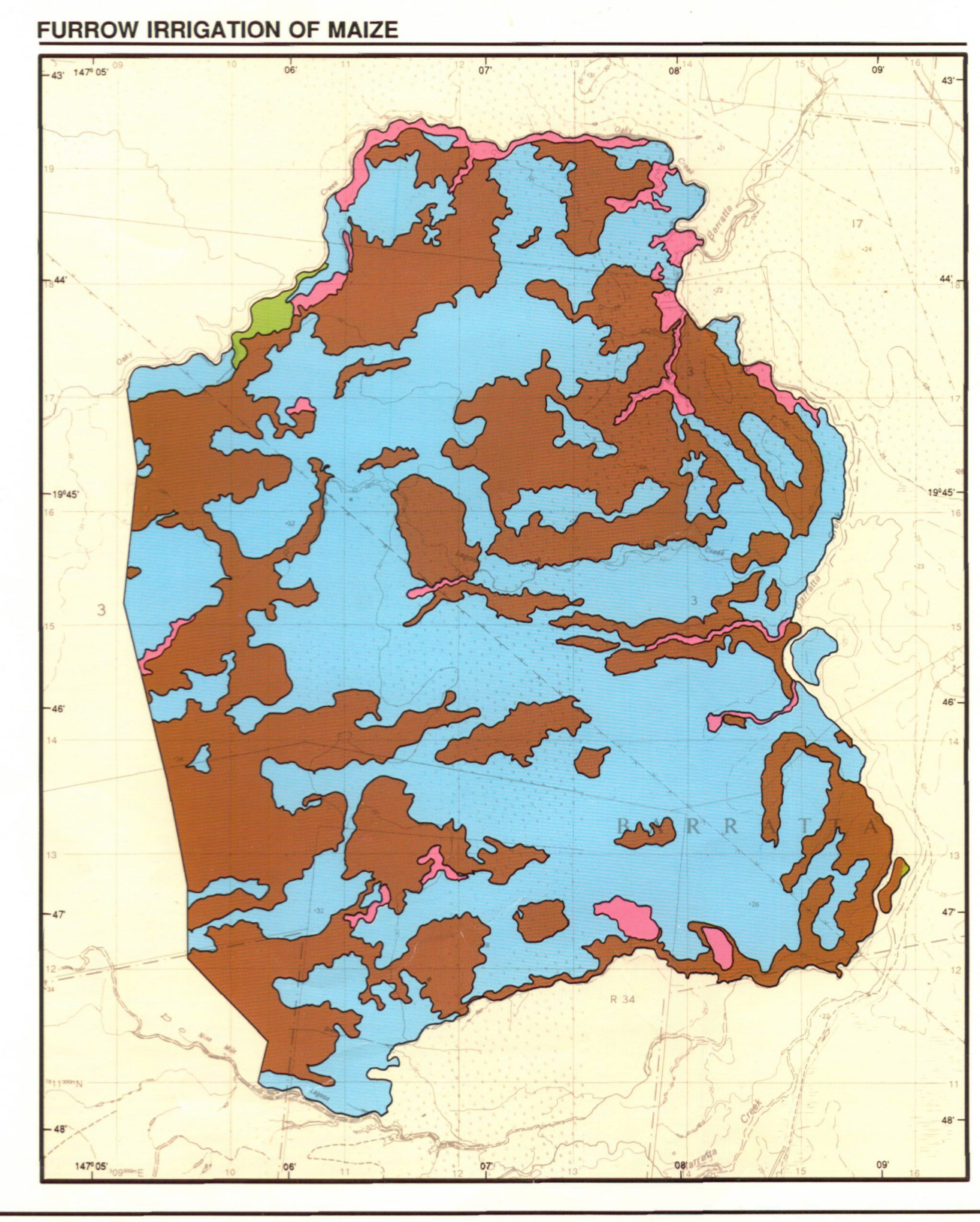
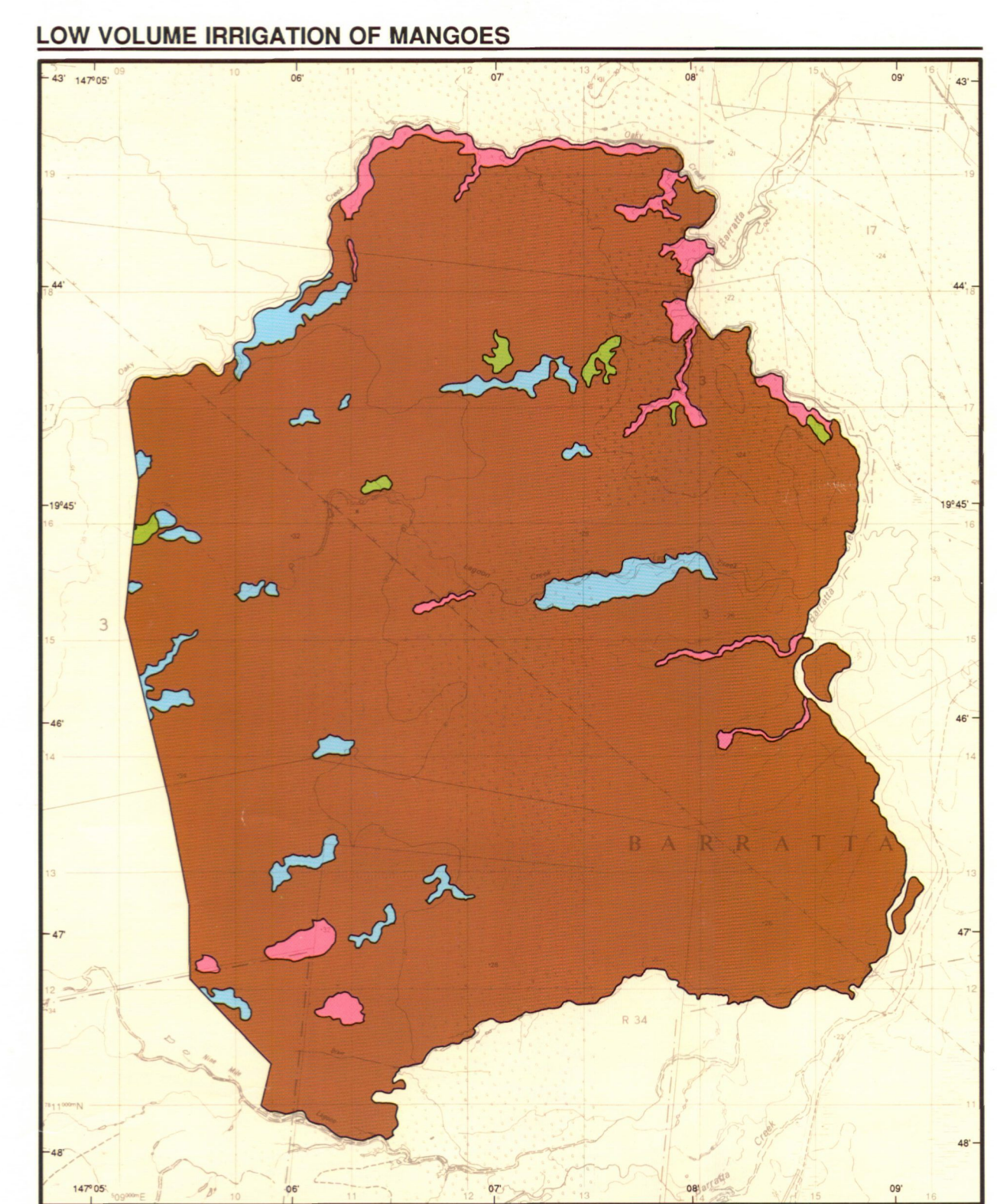
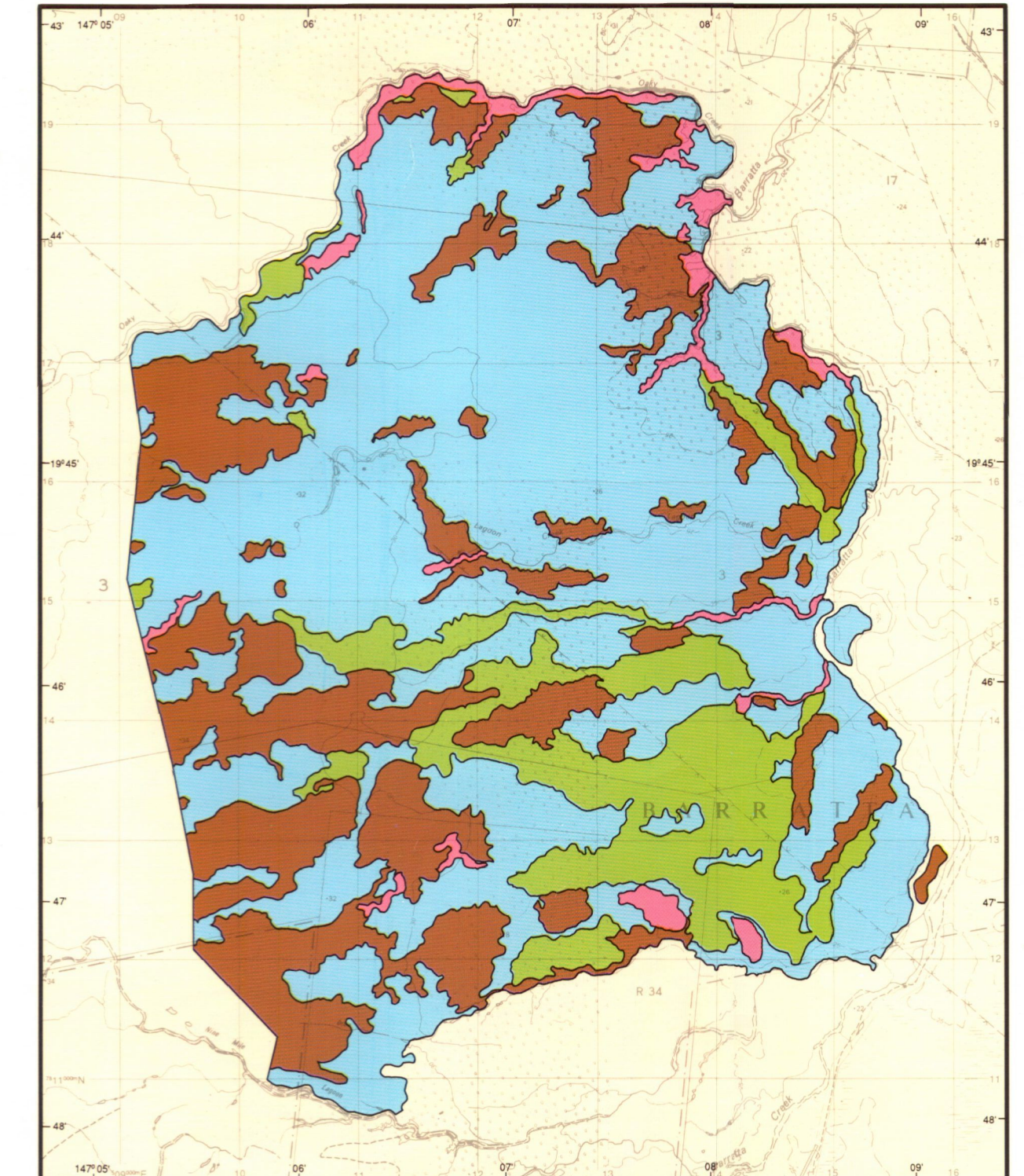
SOILS OF MISCELLANEOUS ALLUVIAL LANDFORMS

6Lca	Yellabinn	0.10-0.30 m dark coarse sand to sandy loam A horizon over acid to neutral brown to yellow-brown coarse sand to sandy loam B horizon to 0.80-1.07 m over brown-mottled coarse sand D horizon to 1.50+ m.	No suitable group, alluvial with earthy sand.	Uc5.11 Uc5.21 Uc5.23
6Lcb	Hyle	0.20-0.30 m dark to grey or brown coarse sand to sandy loam A1 horizon over bleached A2 horizon to 0.50-0.60 m over acid to neutral frequently yellow or brown-mottled yellow-brown to brown coarse sand to sandy loam B horizon to 1.50+ m.	No suitable group, alluvial with siliceous sand and earthy sand.	Uc2.21 Uc2.22 Uc3.21
6Lcc	Burdekin	0.05-0.50 m dark to brown coarse sand to fine sandy loam A1 horizon over grey, brown or yellow A2 or A3 horizon to 0.50-1.0 m over acid to neutral brown to yellow sand to light sandy clay loam A3 or B horizon to 1.50+ m.	No suitable group, alluvial with siliceous sand or earthy sand.	Uc5.21 Uc5.11 Uc5.23 Uc4.21

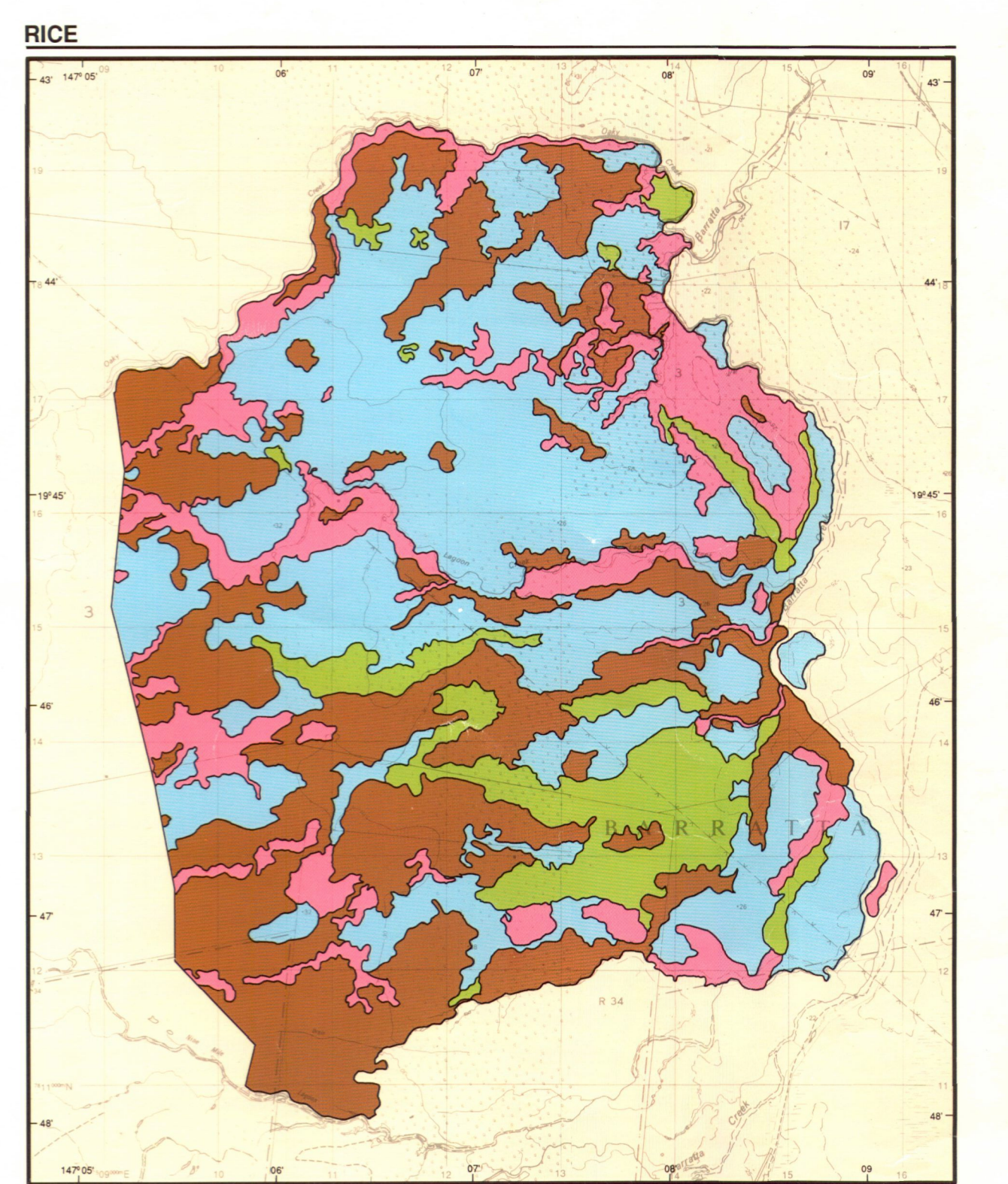
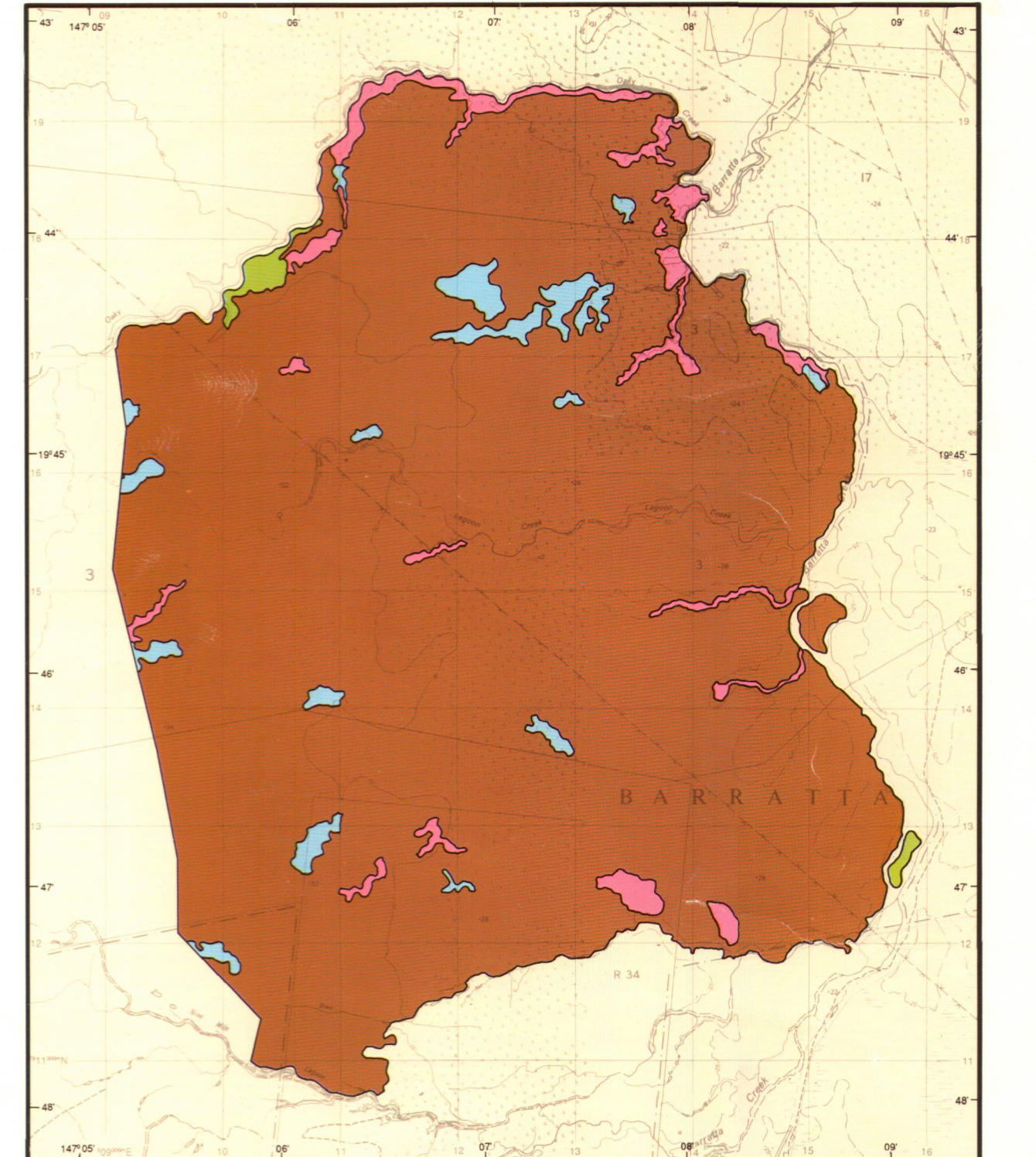


Mapping Unit Code	Series Affiliation	Major Attributes of Dominant Soil*	Great Soil Group	Main Principal Profile Forms	Mapping Unit Code	Series Affiliation	Major Attributes of Dominant Soil*	Great Soil Group	Main Principal Profile Forms
6Lca	Yellabinn	0.10-0.30 m dark coarse sand to sandy loam A horizon over acid to neutral brown to yellow-brown coarse sand to sandy loam B horizon to 0.80-1.07 m over brown-mottled coarse sand D horizon to 1.50+ m.	No suitable group, alluvial with earthy sand.	Uc5.11 Uc5.21 Uc5.23	6Lcb	Hyle	0.20-0.30 m dark to grey or brown coarse sand to sandy loam A1 horizon over bleached A2 horizon to 0.50-0.60 m over acid to neutral frequently yellow or brown-mottled yellow-brown to brown coarse sand to sandy loam B horizon to 1.50+ m.	No suitable group, alluvial with siliceous sand and earthy sand.	Uc2.21 Uc2.22 Uc3.21
6Lcc	Burdekin	0.05-0.50 m dark to brown coarse sand to fine sandy loam A1 horizon over grey, brown or yellow A2 or A3 horizon to 0.50-1.0 m over acid to neutral brown to yellow sand to light sandy clay loam A3 or B horizon to 1.50+ m.	No suitable group, alluvial with siliceous sand or earthy sand.	Uc5.21 Uc5.11 Uc5.23 Uc4.21	6Lcd	Burdekin	0.15-0.30 m dark to grey or brown coarse sand to sandy clay loam A1 horizon over bleached A2 horizon to 0.25-0.50 m over strongly alkaline frequently brown-mottled grey to yellow-brown or yellow light medium to medium clay B horizon to 0.70-1.20 m over brown-mottled yellow-brown to grey clay loam to light medium clay D horizon to 1.50+ m.	Solodic soil	Dd1.43 Dd1.33 Dd1.43

LAND SUITABILITY



LAND SUITABILITY



INTENSITY STATEMENT
This assessment uses the results of a high intensity soil survey. The soil survey was based on aerial photograph interpretation and ground observations of the order of one observation to an area of 4-6 hectares.

REFERENCE

Class 1	Suitable land with negligible limitations
Class 2	Suitable land with slight limitations
Class 3	Suitable land with moderate limitations
Class 4	Currently unsuitable land
Class 5	Unsuitable land

NOTE
This assessment uses the results of a high intensity soil survey. The soil survey was based on aerial photograph interpretation and ground observations of the order of one observation to an area of 4-6 hectares.

DISCLAIMER
This is a scanned image and some detail may be illegible or lost. While every care is taken to ensure the accuracy of this product, the Department of Natural Resources and Mines makes no representations or warranties about its accuracy, reliability, completeness or suitability for any particular purpose and disclaims all responsibility and all liability (including without limitation, liability in negligence) for all expenses, losses, damages (including indirect or consequential damage) and costs which you might incur as a result of the product being inaccurate or incomplete in any way for any reason.