


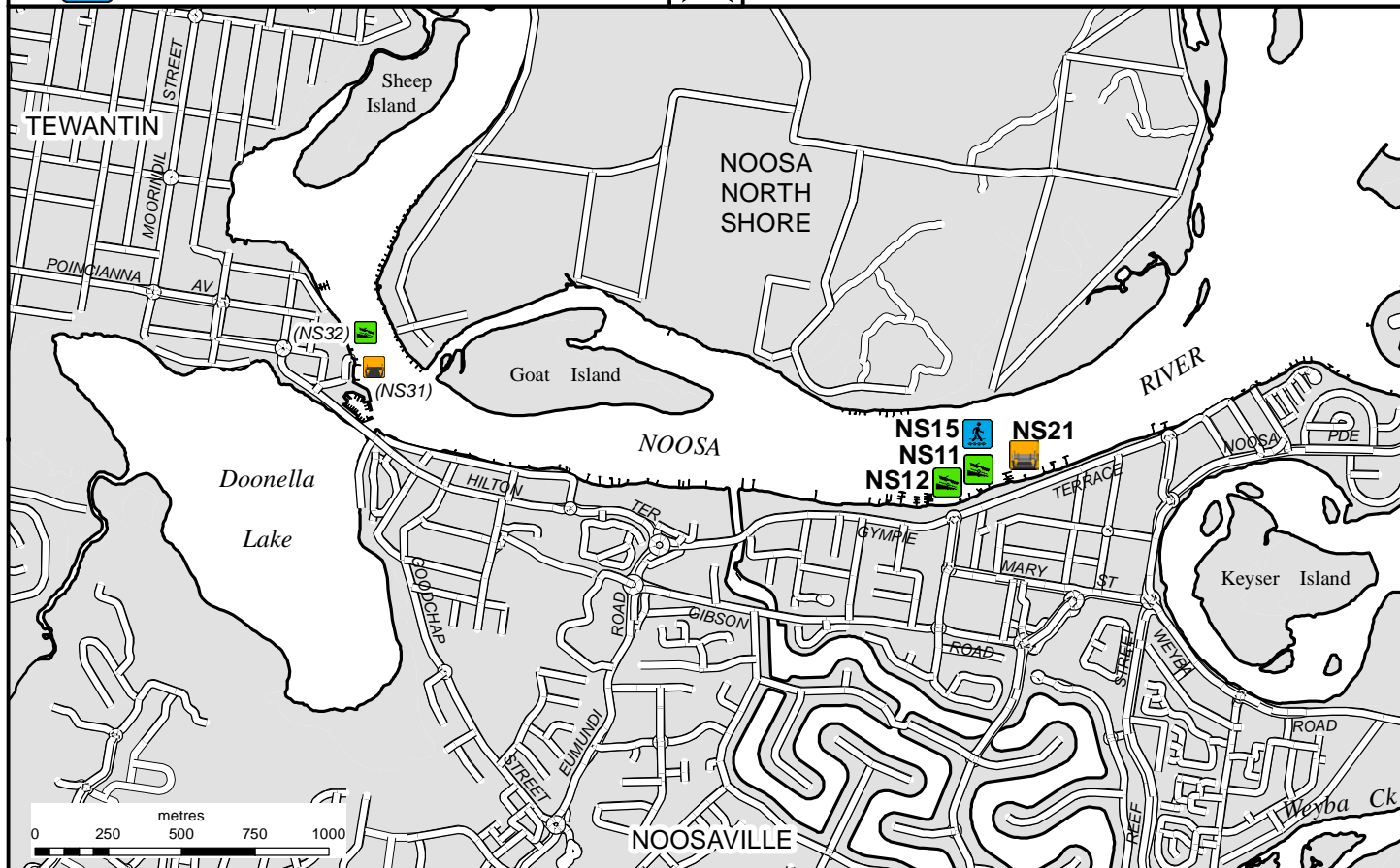


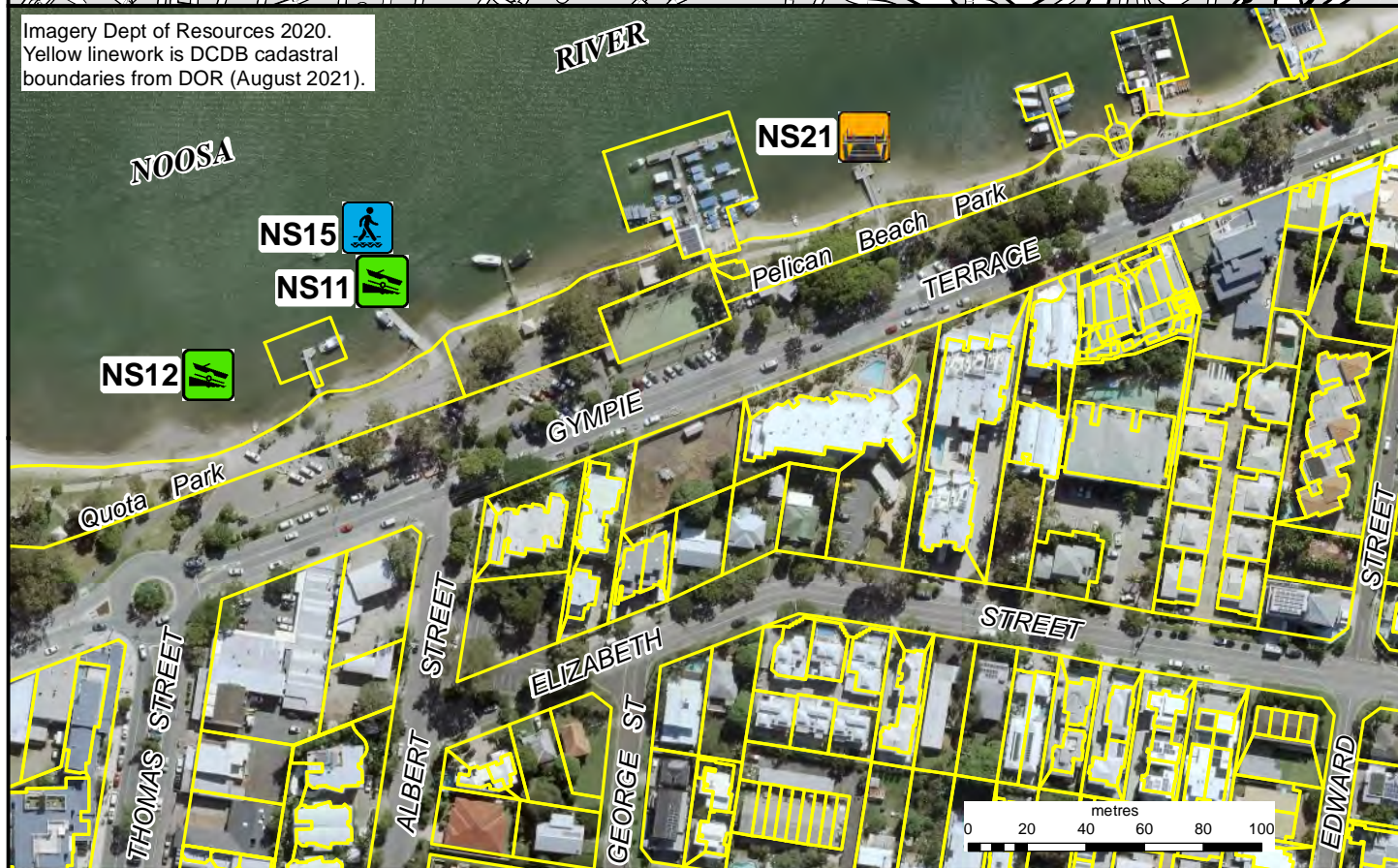
-  Public boat ramps
-  Floating walkway
-  Public jetty



NOOSAVILLE
(Thomas and Albert Street)



Imagery Dept of Resources 2020.
Yellow linework is DCDB cadastral boundaries from DOR (August 2021).



© The State of Queensland
(Transport and Main Roads) 2021



Managing Authority

**Noosa Shire
Council**

Facility code

**NS11 NS12
NS15 NS21**

L-1-92-1B



Prepared 12 October 2021
Maritime Safety Queensland