

Intensive Case Management (ICM) is a targeted intervention to address multiple factors that impact chronic juvenile offending, including problematic substance use. The program aims to enhance family and kinship connections and promote engagement in educational and training initiatives through integrating a range of supports.

INTENSIVE SUPPORT OFFERED BY ICM THROUGH 2018-22 TO...



66% (88) IDENTIFY AS INDIGENOUS

Young people and families received cognitive behavioural therapies, family sessions, mentoring support and case planning for an **average 9-month duration.**

THE BENEFITS OF ICM ARE MULTI-LAYERED

Program costs

\$7.4m

FY19-FY22

Savings

\$8.1-15.7m

reduced frequency and severity of offending, and time in custody

Benefit-to-cost ratio

1.1- 2.1

to the criminal justice system

REDUCED REOFFENDING

reduced frequency and severity of offending

EARLY INTERVENTION WITH SIBLINGS

decreased risk profile of siblings potentially diverting from youth justice

CHANGED ACCESS TO GOVERNMENT SERVICES

improved engagement with government services or independence from

IMPROVED FAMILY FUNCTIONING

enhanced parental capacity and home environment

42%

of former clients have not reoffended (as at 31 July 2022)

53%

of these are Indigenous

HOW DOES ICM ACHIEVE SUPERIOR REDUCTIONS IN REOFFENDING?

FOCUSSED CASELOADS ENABLE A HIGH LEVEL OF SERVICE

5 high-risk young people and families per case manager delivers improved intervention intensity.

Weekly contact:

- 2-3 x offence-focused sessions (cognitive behavioural therapy)
- 1-2 x family work sessions
- 1-2 x youth support/mentoring sessions

PROVEN EVIDENCE-BASED PRACTICE FRAMEWORKS

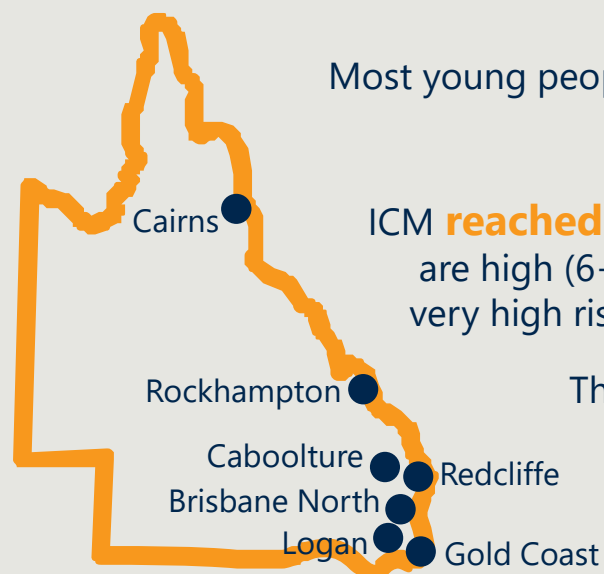
Strengths-based approach underpinned by Multisystemic Therapy, Collaborative Family Work, Good Lives Model and Strengthening Families Protective Factors framework

Tailored service response plans informed by criminogenic analysis

COLLABORATIVE APPROACH PROVIDING WRAPAROUND SUPPORT

Fostering **therapeutic alliances** to provide the right support.

A **multi-agency approach** coordinated by the ICM case manager



Most young people were high risk, with a **median SROI of 5.8**

ICM **reached 17%** of the cohort who are high (6+) SROI and moderate to very high risk, at evaluated locations

There is an opportunity to reach more clients

REDUCTION IN FREQUENCY

The median outcome is a **51% reduction** in the frequency of offending

Which is **22% more effective** than alternative Youth Justice supports (29% reduction)

REDUCTION IN SEVERITY

The median outcome is a **72% reduction** in the proportion of 'crimes against the person'*

Which is **59% more effective** than alternative Youth Justice supports (13% reduction)

*Note: crimes against the person includes common assault, break and enter, theft, armed robbery.