

# Maritime Safety Queensland



Manly Boat Harbour

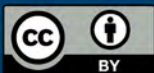
# Beacon to Beacon Guide

## Southern Moreton Bay

### Published by

Maritime Safety Queensland

© Copyright The State of Queensland  
(Department of Transport and Main Roads) 2016



To view a copy of this licence, visit  
<http://creativecommons.org/licenses/by/3.0/au>

### For commercial use terms and conditions

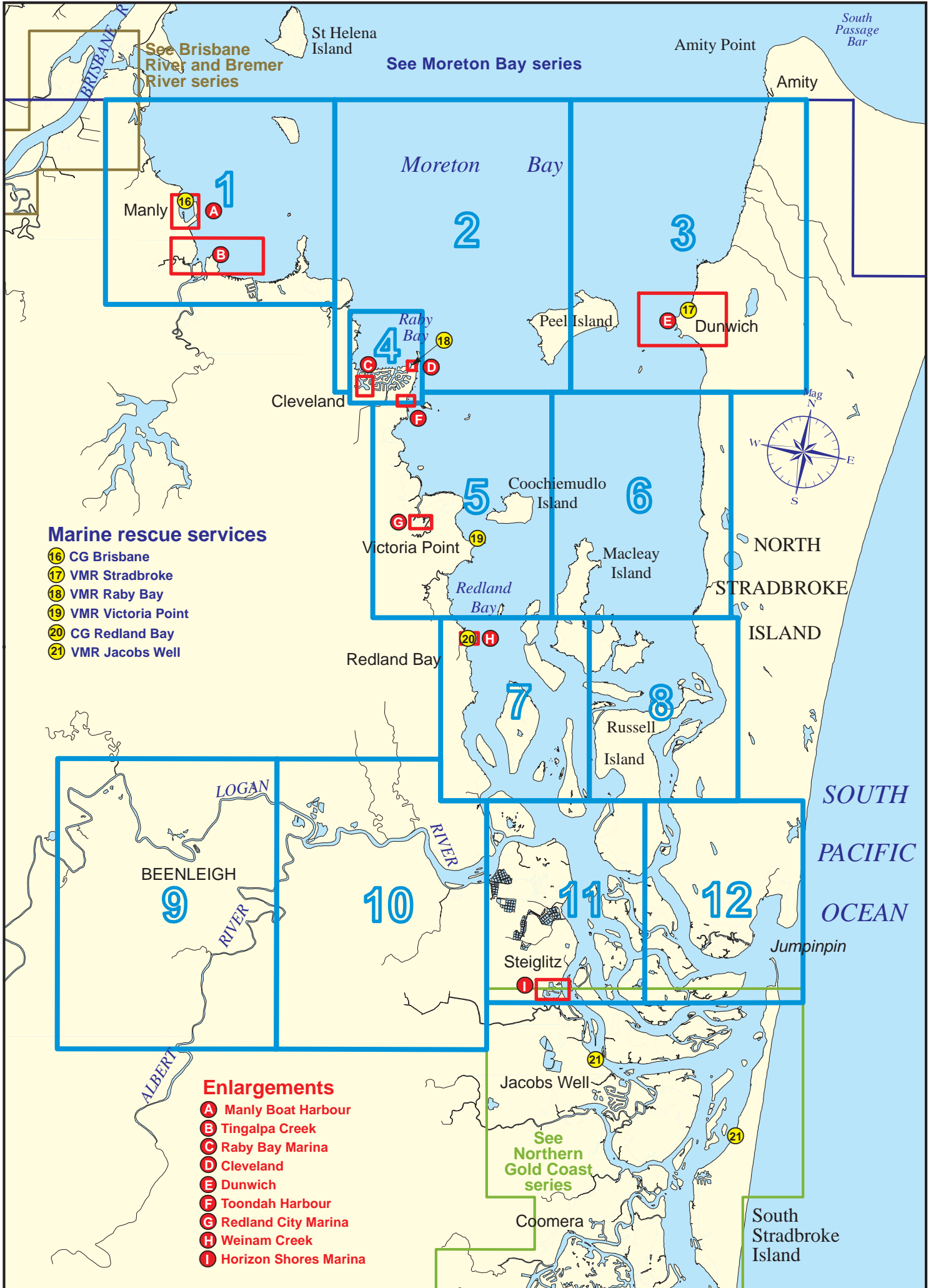
Please visit the Maritime Safety Queensland website at [www.msq.qld.gov.au](http://www.msq.qld.gov.au)

### 'How to' use this guide

Use this Beacon to Beacon Guide with the 'How to' and legend booklet available from [www.msq.qld.gov.au](http://www.msq.qld.gov.au)

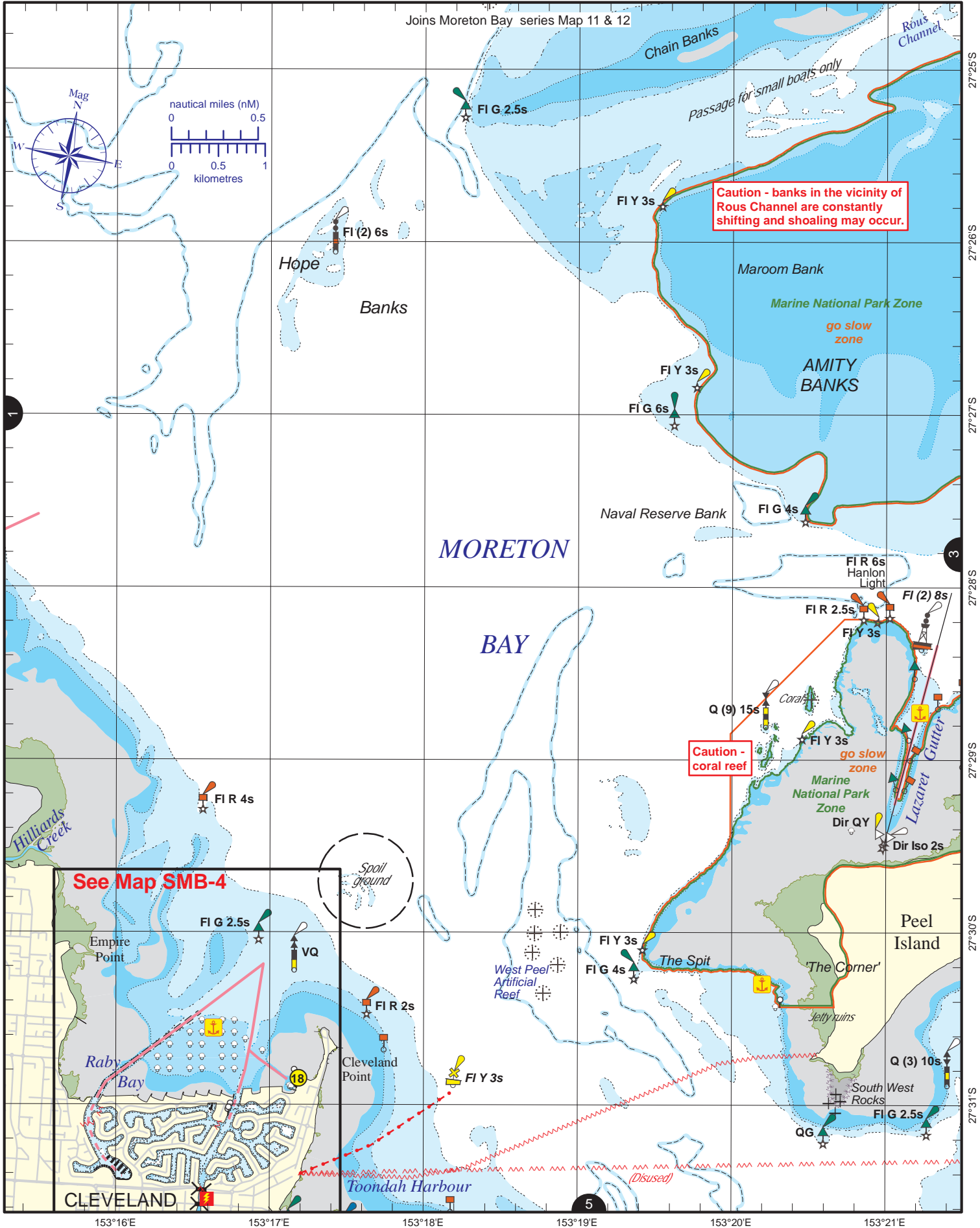
# Southern Moreton Bay

# Key Sheet







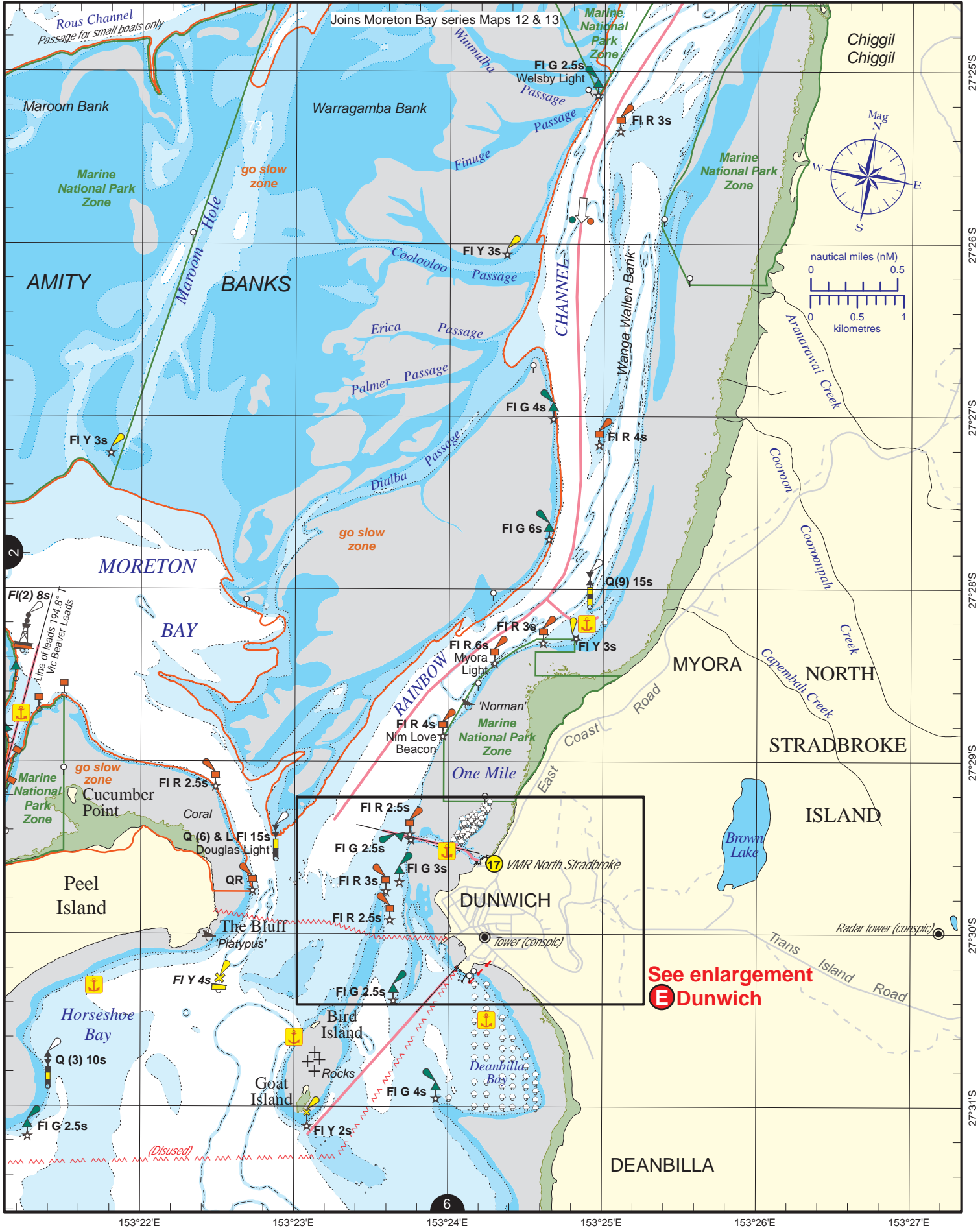


Always keep a proper lookout when boating.  
**Look up and live** for power and cable crossings that may not be shown on these maps due to scale or recent construction.  
**CAUTION: depth contours have not been re-surveyed in most areas since the 2011 and 2013 floods.**  
**Exercise care when travelling outside suggested navigation tracks.**

Nautical information current to 9 May 2016





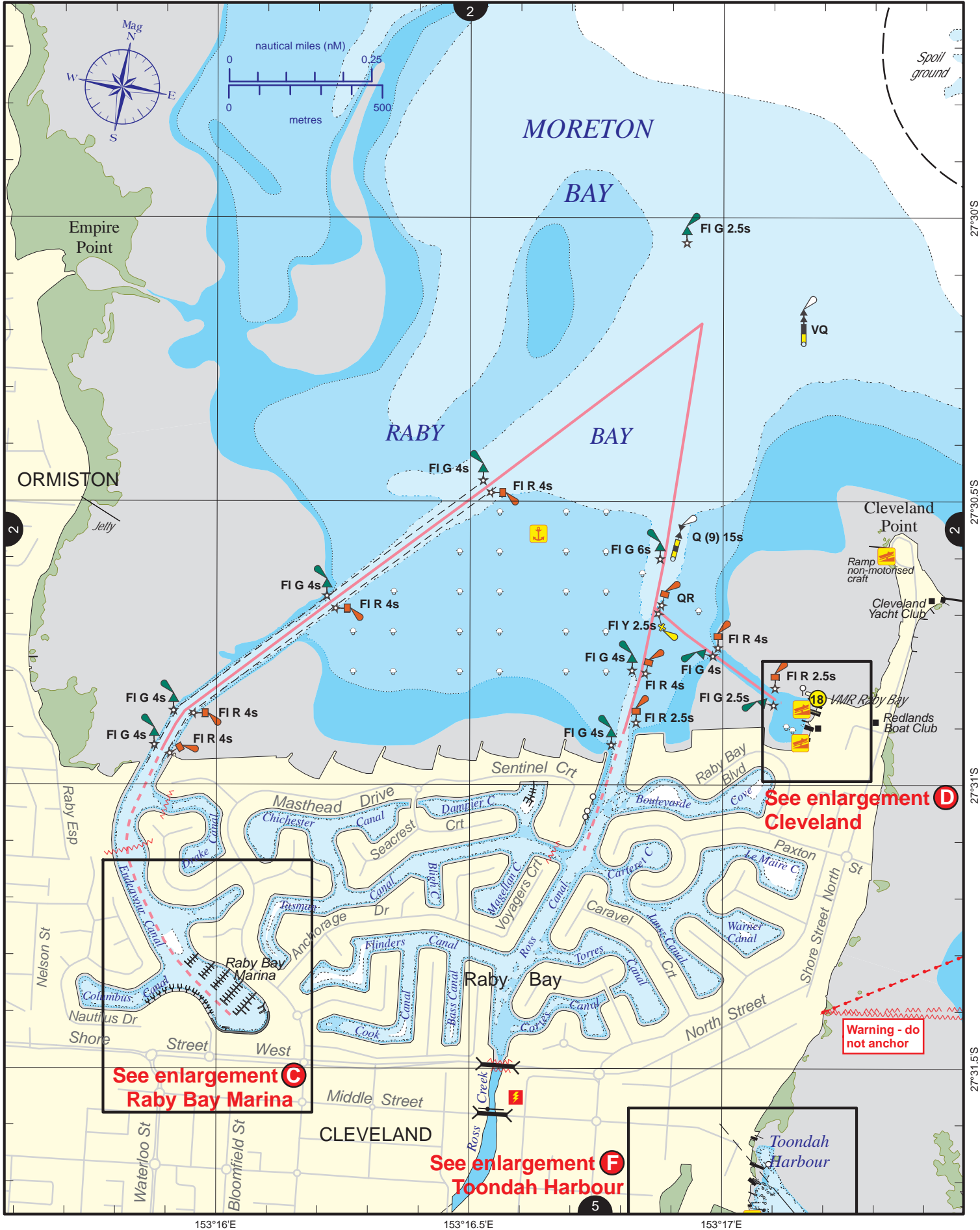


Always keep a proper lookout when boating.  
 Look up and live for power and cable crossings that may not be shown on these maps due to scale or recent construction.  
**CAUTION: depth contours have not been re-surveyed in most areas since the 2011 and 2013 floods.**  
 Exercise care when travelling outside suggested navigation tracks.

Nautical information current to 9 May 2016

© Copyright The State of Queensland 2016  
 Queensland Department of Transport and Main Roads - Maritime Safety Queensland.  
 To reproduce any map within this series, see terms and conditions at Maritime Safety Queensland's website ([www.msq.qld.gov.au](http://www.msq.qld.gov.au))

See enlargement **E** Dunwich



Always keep a proper lookout when boating. Look up and live for power and cable crossings that may not be shown on these maps due to scale or recent construction.

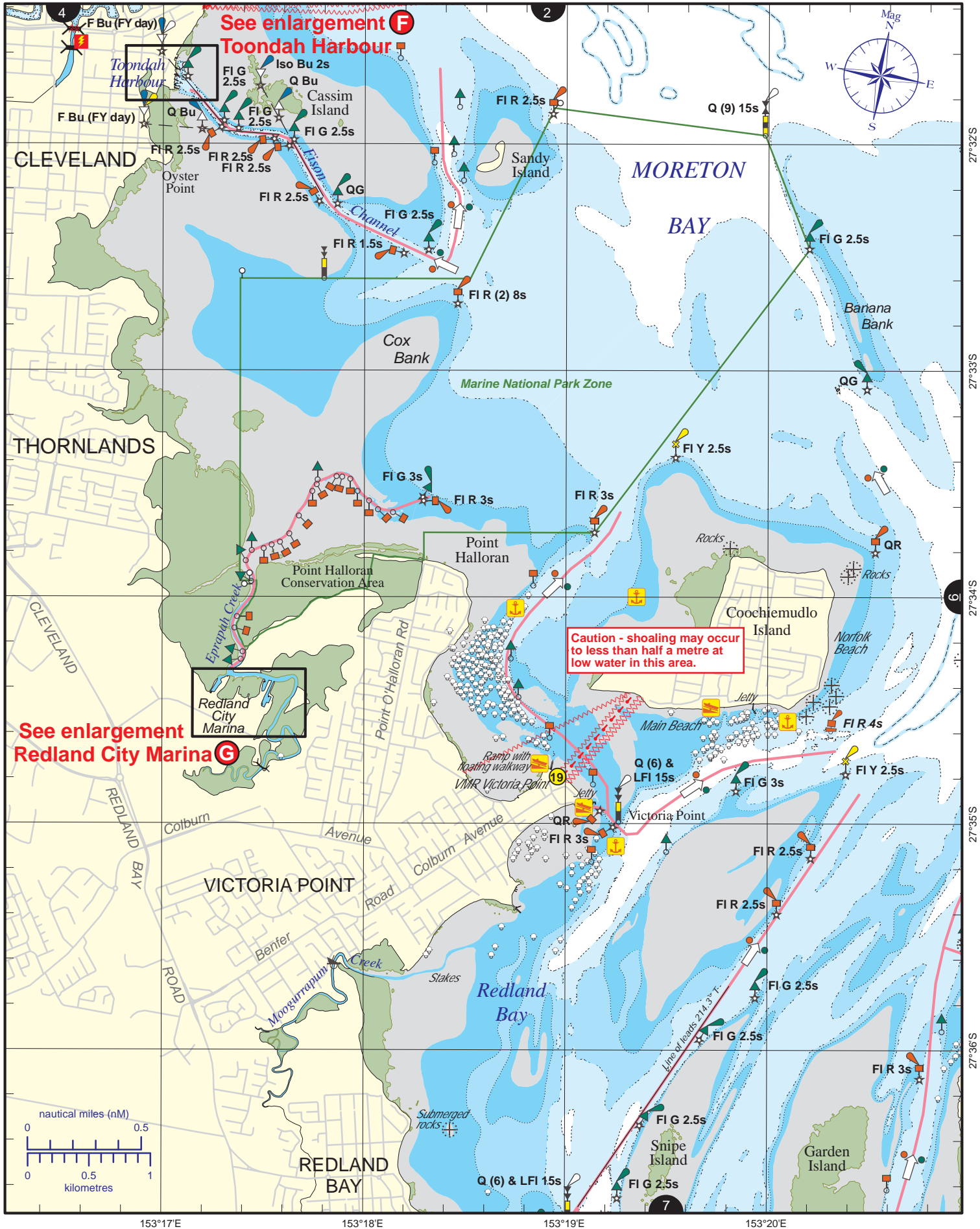
Nautical information current to 9 May 2016

**CAUTION: depth contours have not been re-surveyed in most areas since the 2011 and 2013 floods. Exercise care when travelling outside suggested navigation tracks.**

© Copyright The State of Queensland 2016  
Queensland Department of Transport and Main Roads - Maritime Safety Queensland.  
To reproduce any map within this series, see terms and conditions at Maritime Safety Queensland's website ([www.msq.qld.gov.au](http://www.msq.qld.gov.au))







Always keep a proper lookout when boating.

Nautical information current to 9 May 2016

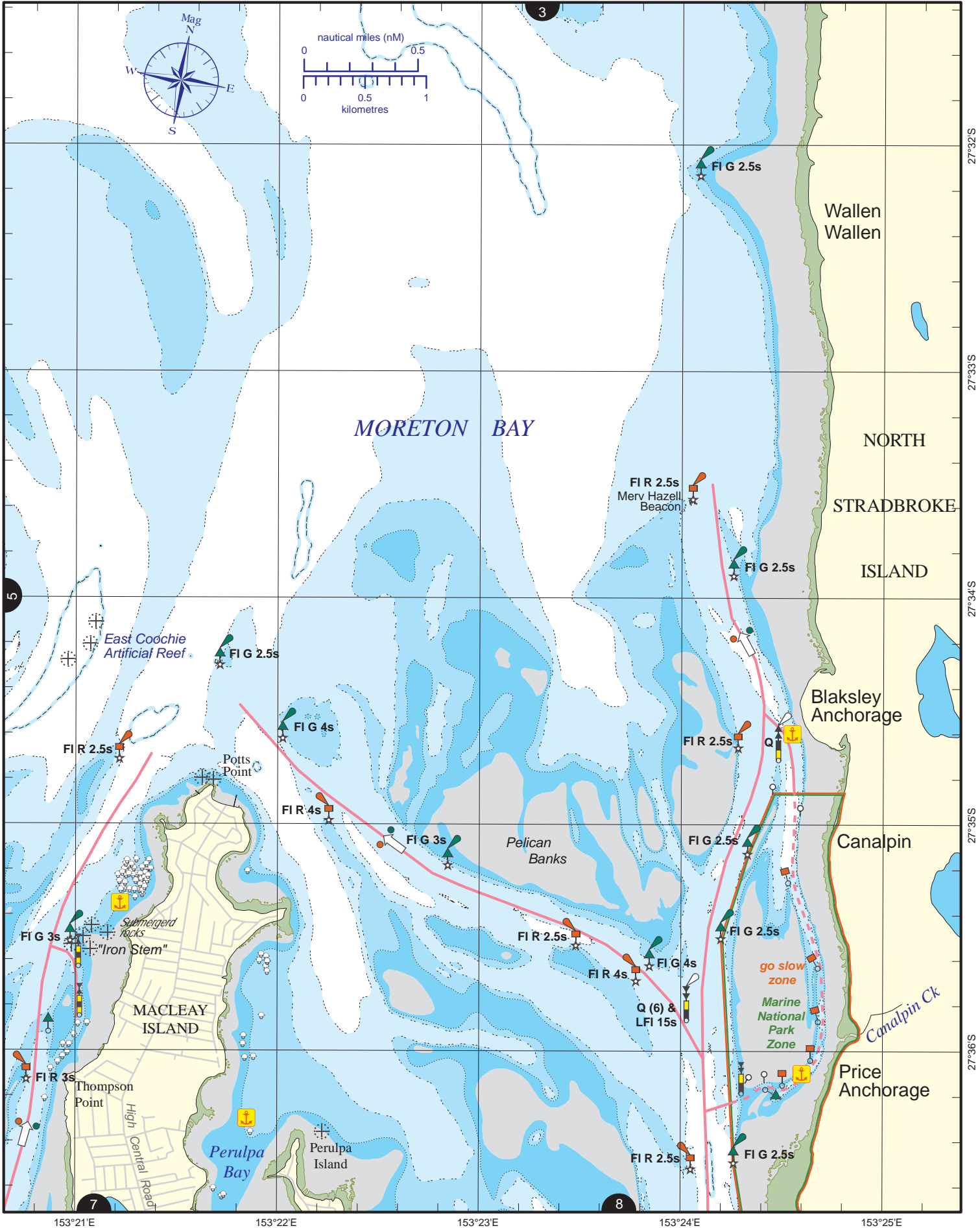
**Look up and live** for power and cable crossings that may not be shown on these maps due to scale or recent construction.

**CAUTION: depth contours have not been re-surveyed in most areas since the 2011 and 2013 floods.**

**Exercise care when travelling outside suggested navigation tracks.**

© Copyright The State of Queensland 2016  
 Queensland Department of Transport and Main Roads - Maritime Safety Queensland.  
 To reproduce any map within this series, see terms and conditions at Maritime Safety Queensland's website ([www.msq.qld.gov.au](http://www.msq.qld.gov.au))





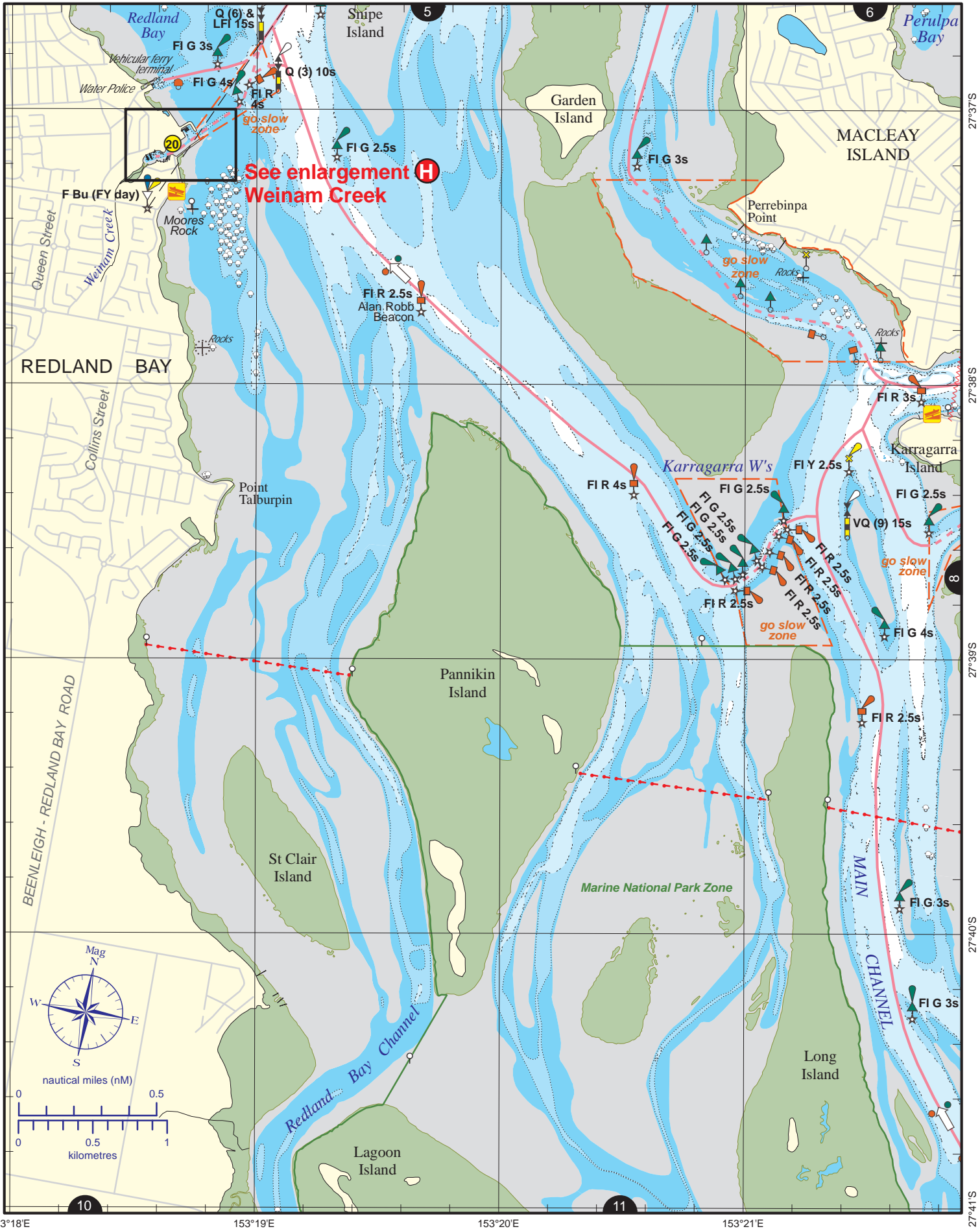
Always keep a proper lookout when boating.  
**Look up and live** for power and cable crossings that may not be shown on these maps due to scale or recent construction.  
**CAUTION: depth contours have not been re-surveyed in most areas since the 2011 and 2013 floods.**  
**Exercise care when travelling outside suggested navigation tracks.**

Nautical information current to 9 May 2016

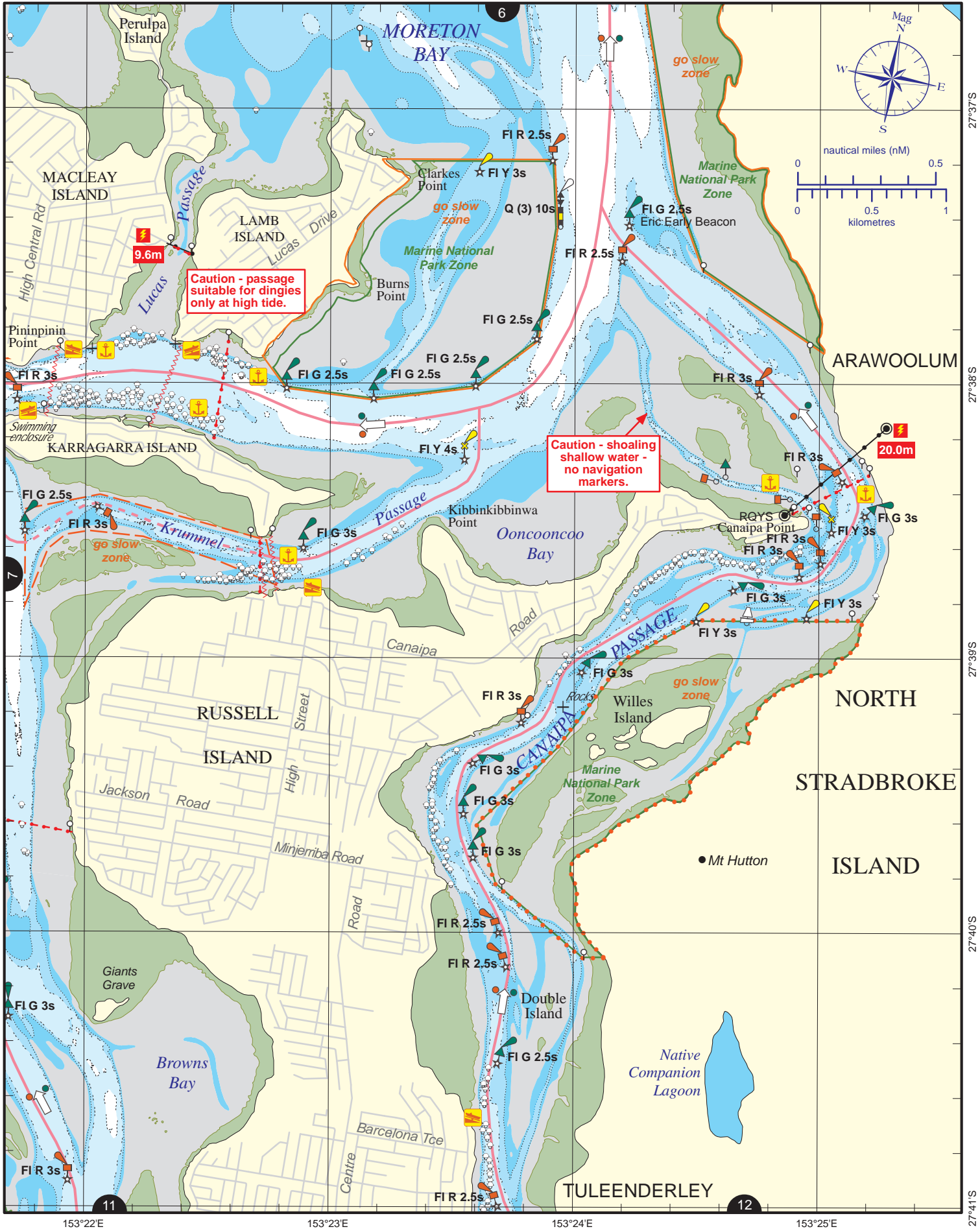
© Copyright The State of Queensland 2016  
 Queensland Department of Transport and Main Roads - Maritime Safety Queensland.  
 To reproduce any map within this series, see terms and conditions at Maritime Safety Queensland's website ([www.msq.qld.gov.au](http://www.msq.qld.gov.au))





**See enlargement  
Weinam Creek**



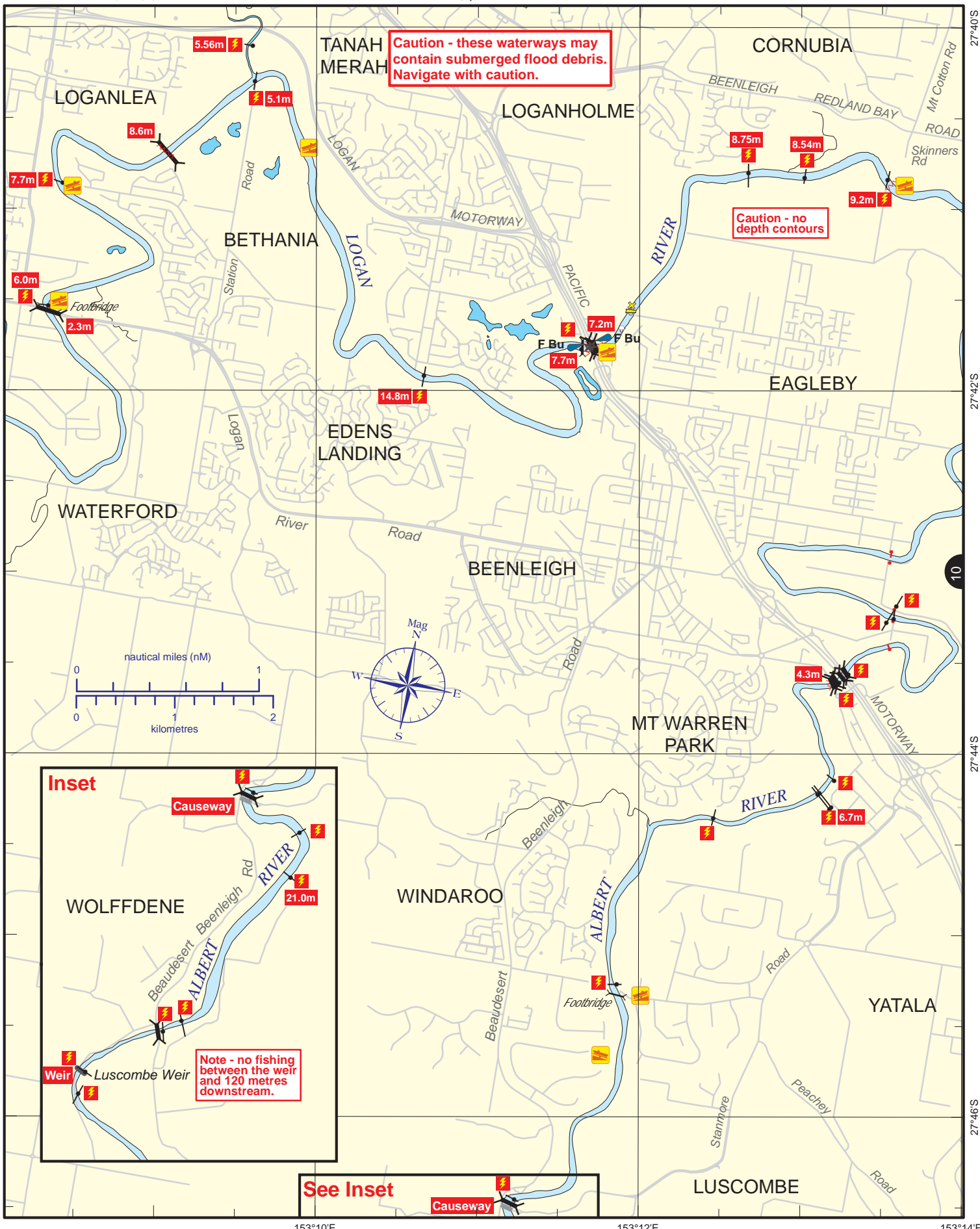
Always keep a proper lookout when boating.  
**Look up and live** for power and cable crossings that may not be shown on these maps due to scale or recent construction.  
**CAUTION: depth contours have not been re-surveyed in most areas since the 2011 and 2013 floods.**  
**Exercise care when travelling outside suggested navigation tracks.**

Nautical information current to 9 May 2016

© Copyright The State of Queensland 2016  
 Queensland Department of Transport and Main Roads - Maritime Safety Queensland.  
 To reproduce any map within this series, see terms and conditions at Maritime Safety Queensland's website ([www.msq.qld.gov.au](http://www.msq.qld.gov.au))







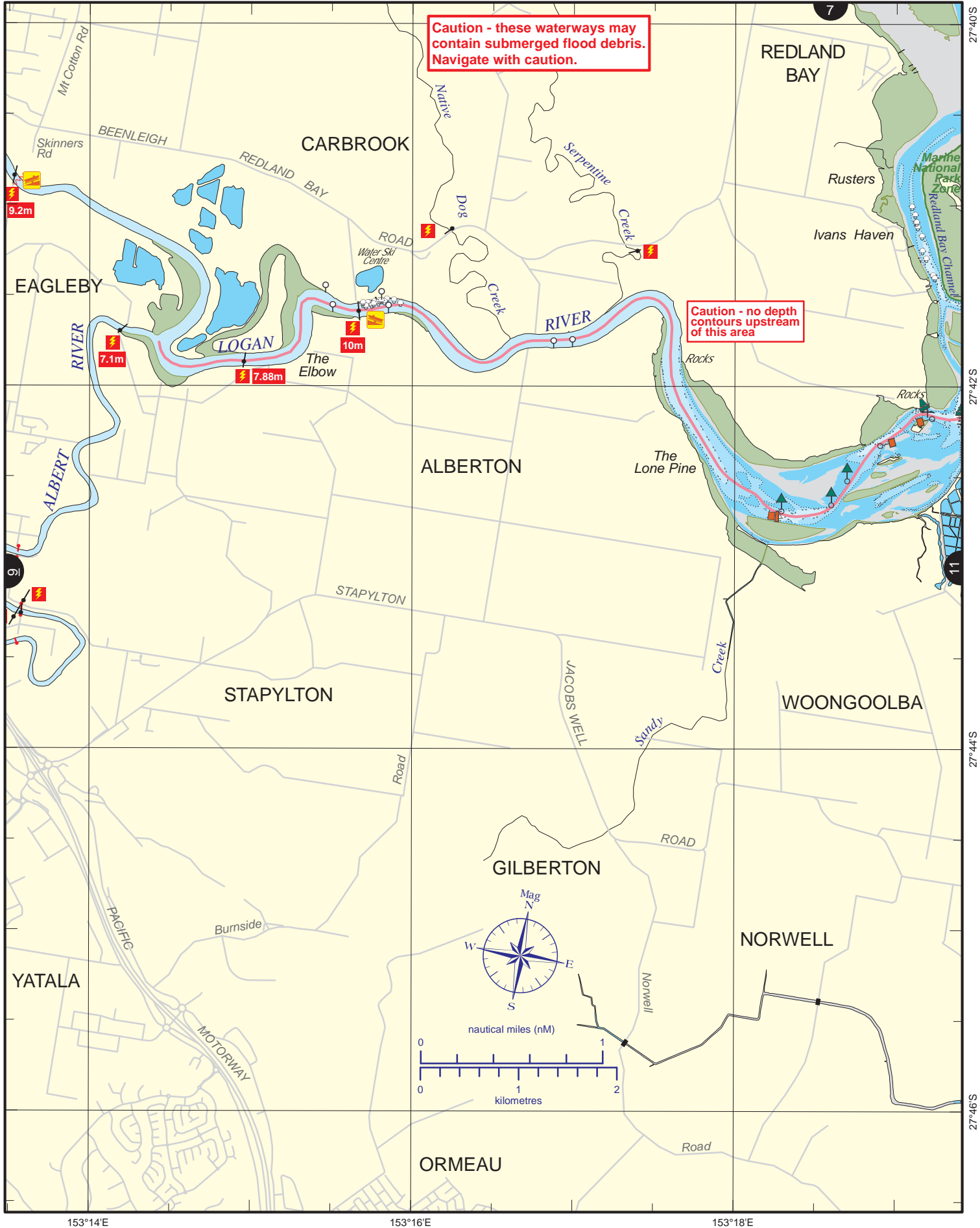
Always keep a proper lookout when boating.  
**Look up and live** for power and cable crossings that may not be shown on these maps due to scale or recent construction.  
**CAUTION: depth contours have not been re-surveyed in most areas since the 2011 and 2013 floods.**  
**Exercise care when travelling outside suggested navigation tracks.**

© Copyright The State of Queensland 2016  
 Queensland Department of Transport and Main Roads - Maritime Safety Queensland.  
 To reproduce any map within this series, see terms and conditions at Maritime Safety Queensland's website ([www.msq.qld.gov.au](http://www.msq.qld.gov.au))

Nautical information current to 9 May 2016

CC BY

Queensland Government



Always keep a proper lookout when boating.

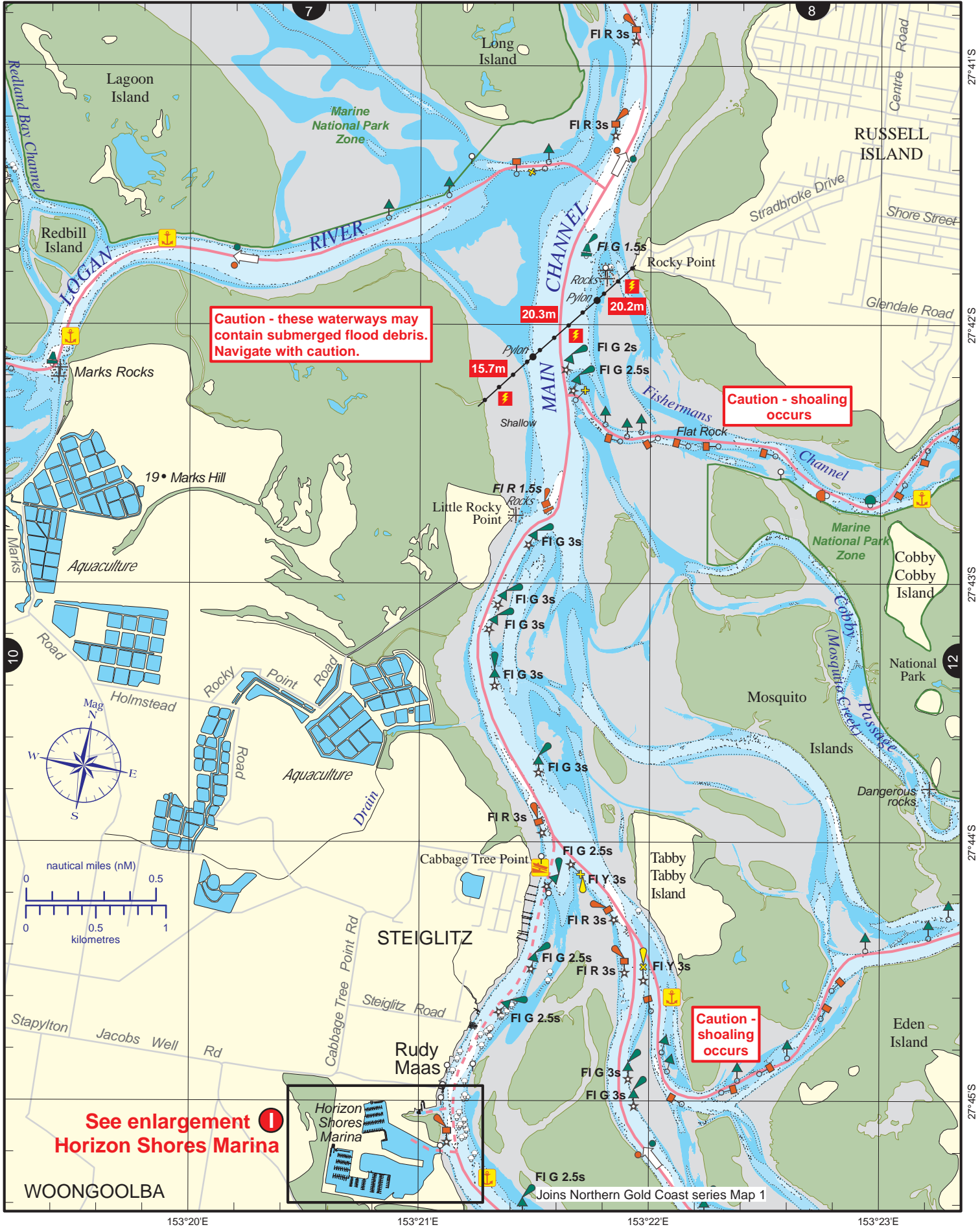
**Look up and live** for power and cable crossings that may not be shown on these maps due to scale or recent construction.

**CAUTION: depth contours have not been re-surveyed in most areas since the 2011 and 2013 floods.**

**Exercise care when travelling outside suggested navigation tracks.**

Nautical information current to 9 May 2016





Always keep a proper lookout when boating.

**Look up and live** for power and cable crossings that may not be shown on these maps due to scale or recent construction.

**CAUTION: depth contours have not been re-surveyed in most areas since the 2011 and 2013 floods.**

**Exercise care when travelling outside suggested navigation tracks.**

Nautical information current to 9 May 2016

© Copyright The State of Queensland 2016

Queensland Department of Transport and Main Roads - Maritime Safety Queensland.

To reproduce any map within this series, see terms and conditions at Maritime Safety Queensland's website ([www.msq.qld.gov.au](http://www.msq.qld.gov.au))





Always keep a proper lookout when boating.  
**Look up and live** for power and cable crossings that may not be shown on these maps due to scale or recent construction.  
**CAUTION: depth contours have not been re-surveyed in most areas since the 2011 and 2013 floods.**  
**Exercise care when travelling outside suggested navigation tracks.**

© Copyright The State of Queensland 2016  
 Queensland Department of Transport and Main Roads - Maritime Safety Queensland.  
 To reproduce any map within this series, see terms and conditions at Maritime Safety Queensland's website ([www.msq.qld.gov.au](http://www.msq.qld.gov.au))

Nautical information current to 9 May 2016

CC BY

Queensland Government





All lit beacons marking entrance to Manly Boat Harbour are synchronised

No anchoring within the boat harbour

Future marina support infrastructure and public areas (under construction)

Always keep a proper lookout when boating.  
**Look up and live** for power and cable crossings that may not be shown on these maps due to scale or recent construction.  
**CAUTION: depth contours have not been re-surveyed in most areas since the 2011 and 2013 floods.**  
**Exercise care when travelling outside suggested navigation tracks.**

© Copyright The State of Queensland 2016  
 Queensland Department of Transport and Main Roads - Maritime Safety Queensland.  
 To reproduce any map within this series, see terms and conditions at Maritime Safety Queensland's website ([www.msq.qld.gov.au](http://www.msq.qld.gov.au))

Nautical information current to 9 May 2016

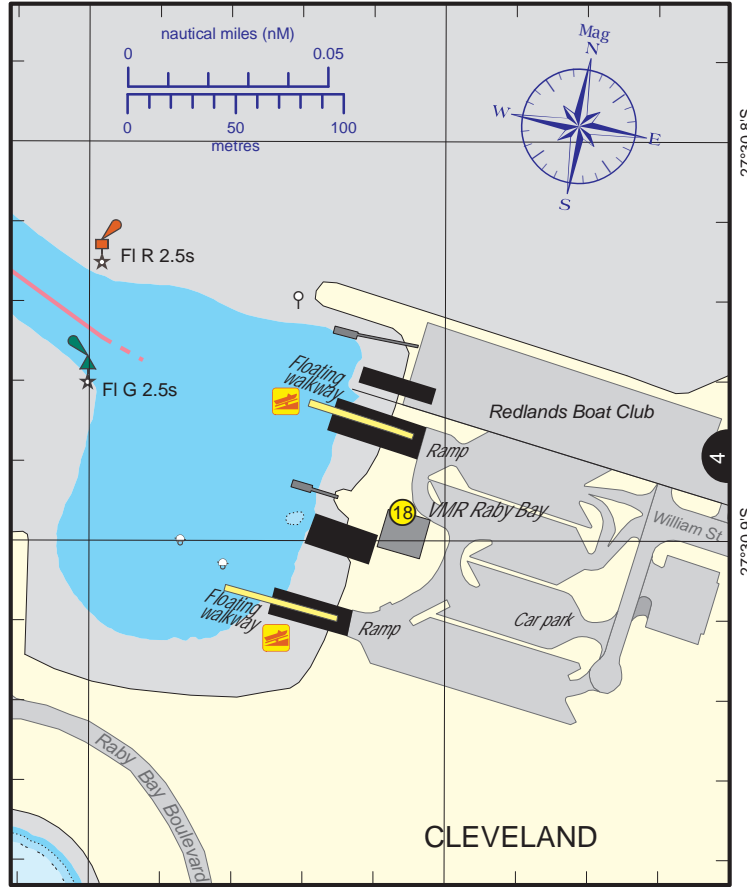
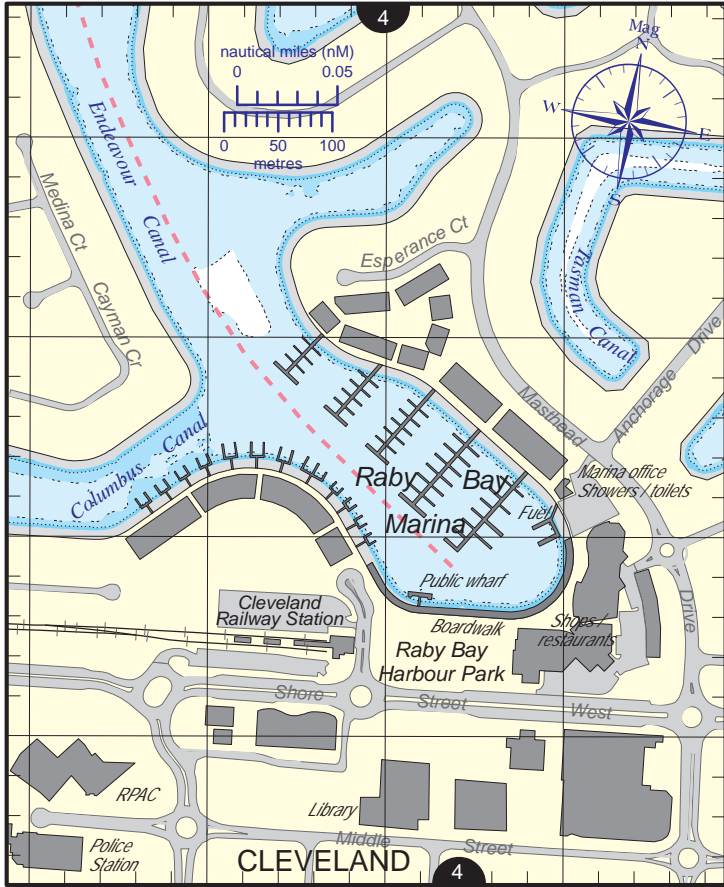
CC BY

Queensland Government

**C Raby Bay Marina**

VMR Raby Bay (0600 - 1800 Sat - Sun - p/h) (88-90, 16-67-21-73-81-82) ph 3821 2244

**D Cleveland**



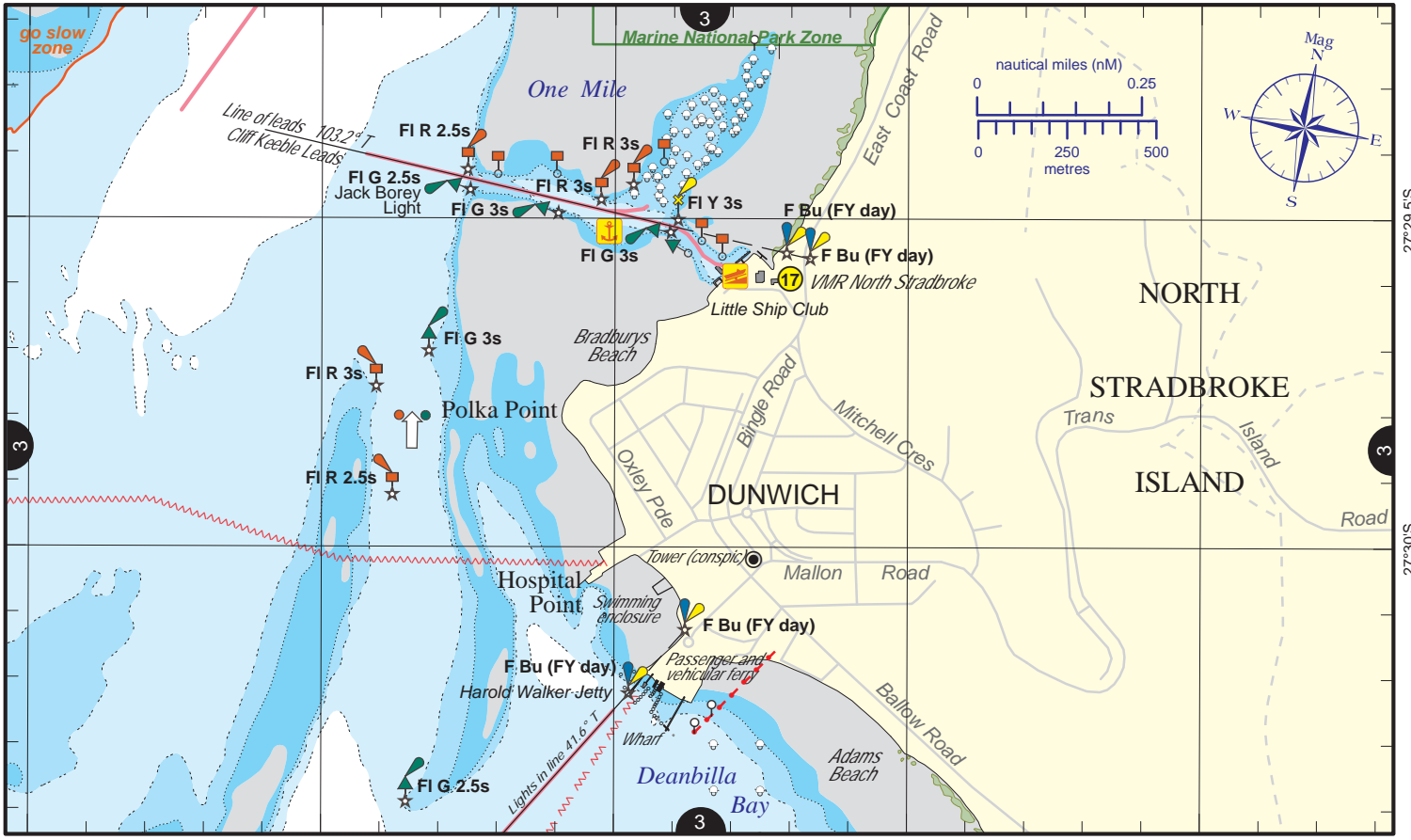
153°15.8'E 153°15.9'E 153°16'E 153°16.1'E

153°17.1'E 153°17.2'E

VMR North Stradbroke (0730 - 1630 Sat - Sun - p/h) (88-90, 16-67-12-13-80-81-82) ph 3409 9338

CG Brisbane (0600 - 2200 Sat - Sun - p/h) (88-90-91, 16-63-67-21-73-81, 2182-4125-6215-8291) ph 3396 5911

**E Dunwich**



153°23'E 153°23.5'E 153°24'E 153°24.5'E

153°25'E

Always keep a proper lookout when boating.  
**Look up and live** for power and cable crossings that may not be shown on these maps due to scale or recent construction.  
**CAUTION: depth contours have not been re-surveyed in most areas since the 2011 and 2013 floods.**  
**Exercise care when travelling outside suggested navigation tracks.**

© Copyright The State of Queensland 2016  
 Queensland Department of Transport and Main Roads - Maritime Safety Queensland.  
 To reproduce any map within this series, see terms and conditions at Maritime Safety Queensland's website ([www.msq.qld.gov.au](http://www.msq.qld.gov.au))

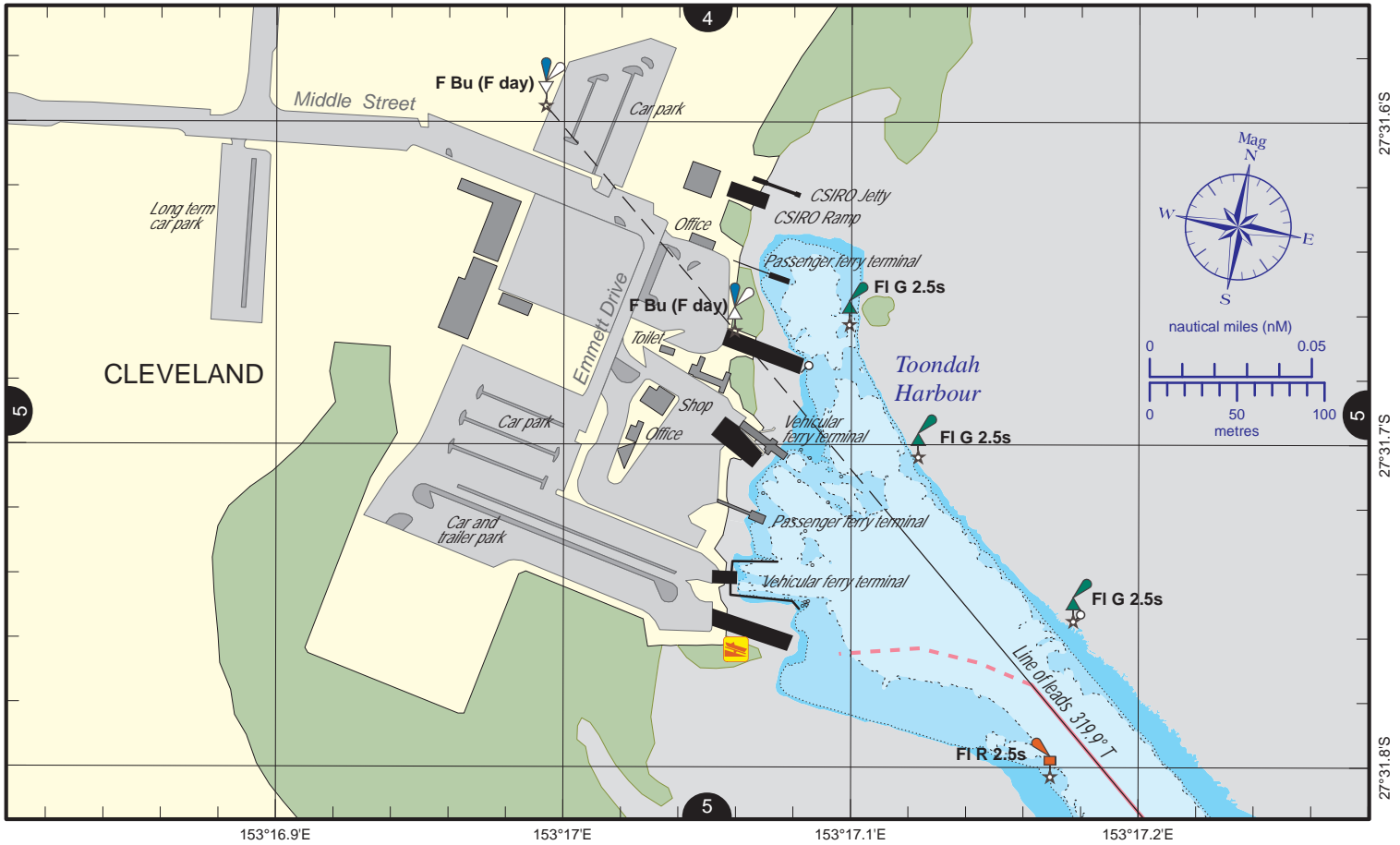
Nautical information current to 9 May 2016

CC BY



VMR Raby Bay (0600 - 1800 Sat - Sun - p/h) (88-90, 16-67-21-73-81-82) ph 3821 2244  
 VMR North Stradbroke (0730 - 1630 Sat - Sun - p/h) (88-90, 16-67-12-13-80-81-82) ph 3409 9338

**F Toondah Harbour**



VMR Victoria Point (0630 - 1700 Sat - Sun, 0700 - 1700 p/h) (88-90, 16-67-73-81-82) ph 3207 8717  
 CG Redland Bay (0600 (0700 winter) - 1700 Sat - Sun - p/h) (88-90, 16-67-13-63-73-81) ph 3206 7777

**G Redland City Marina**

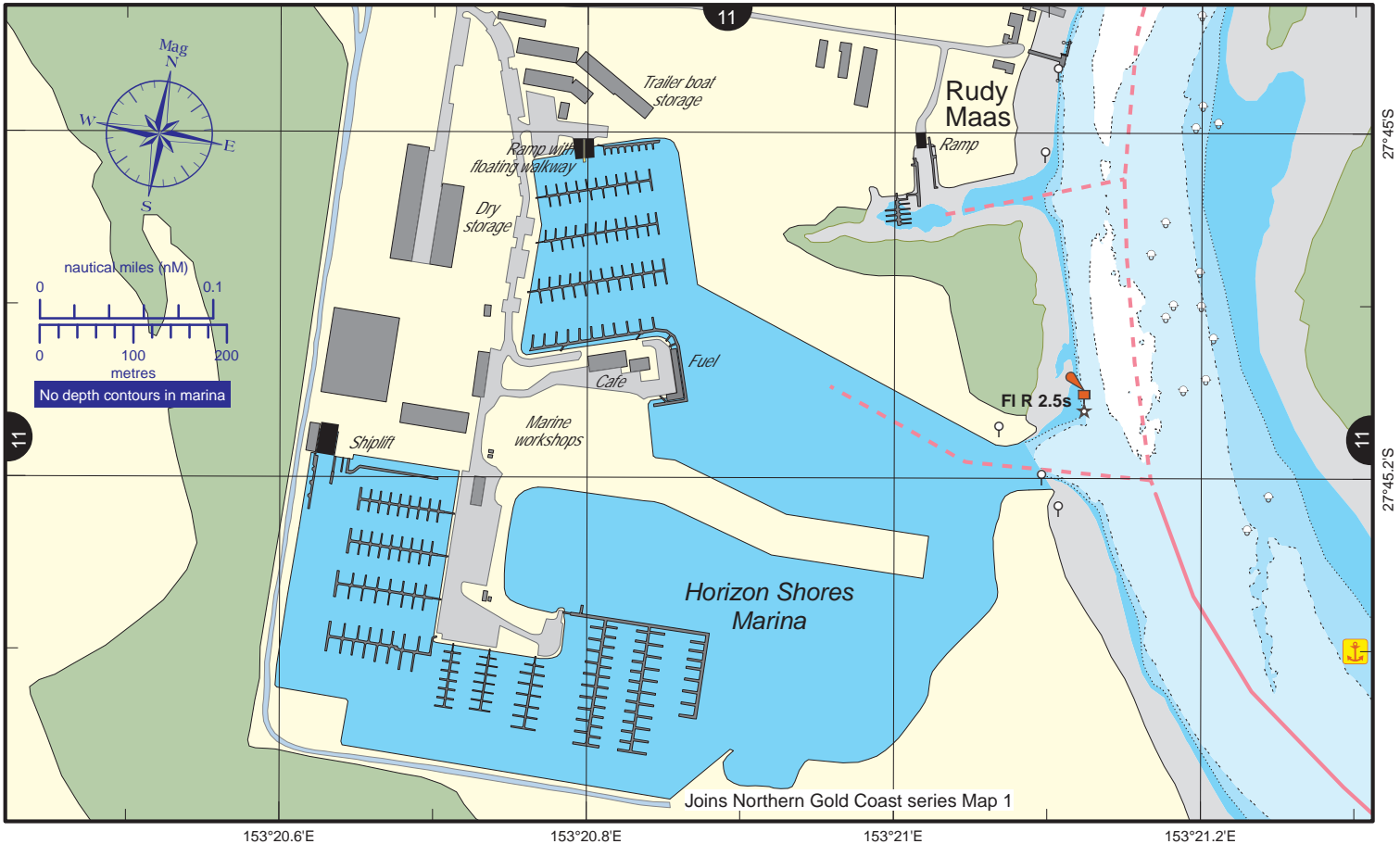
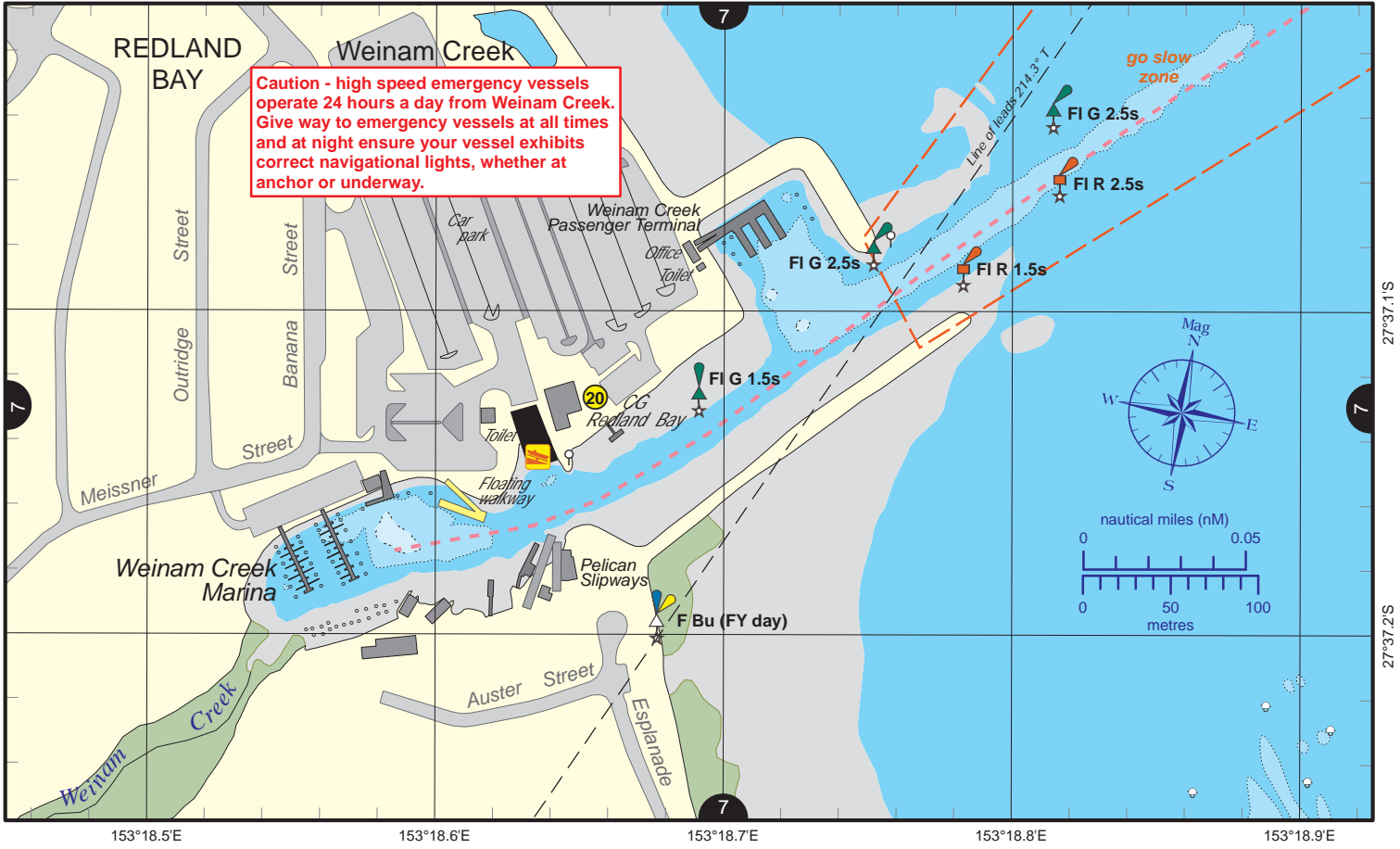


Always keep a proper lookout when boating.  
**Look up and live** for power and cable crossings that may not be shown on these maps due to scale or recent construction.  
**CAUTION: depth contours have not been re-surveyed in most areas since the 2011 and 2013 floods.**  
 Exercise care when travelling outside suggested navigation tracks.

Nautical information current to 9 May 2016

© Copyright The State of Queensland 2016  
 Queensland Department of Transport and Main Roads - Maritime Safety Queensland.  
 To reproduce any map within this series, see terms and conditions at Maritime Safety Queensland's website ([www.msq.qld.gov.au](http://www.msq.qld.gov.au))





Always keep a proper lookout when boating.

**Look up and live** for power and cable crossings that may not be shown on these maps due to scale or recent construction.

**CAUTION: depth contours have not been re-surveyed in most areas since the 2011 and 2013 floods.**

**Exercise care when travelling outside suggested navigation tracks.**

Nautical information current to 9 May 2016