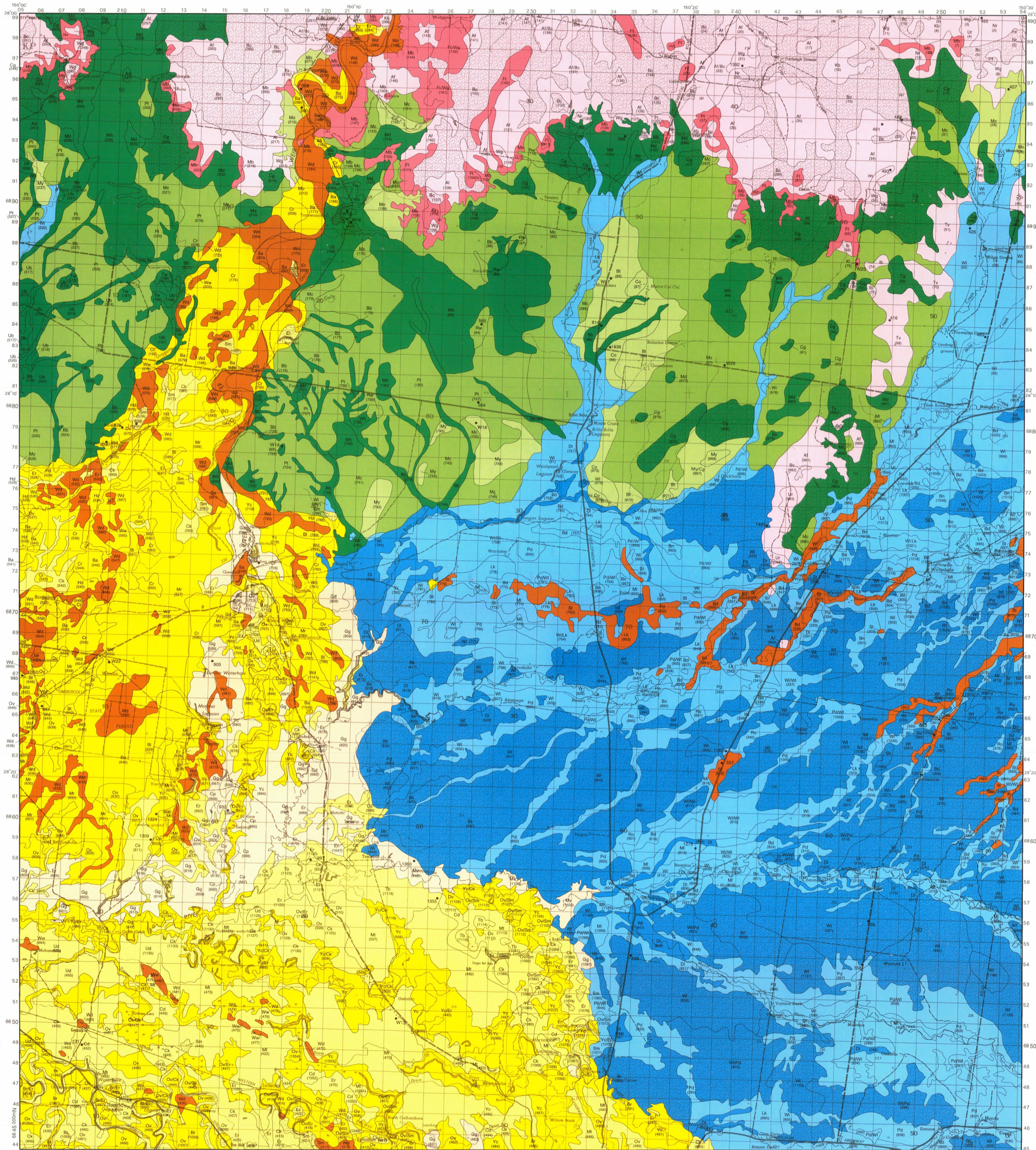


# SOILS

# LAND RESOURCE ASSESSMENT GOODAR AREA QUEENSLAND



## REFERENCE

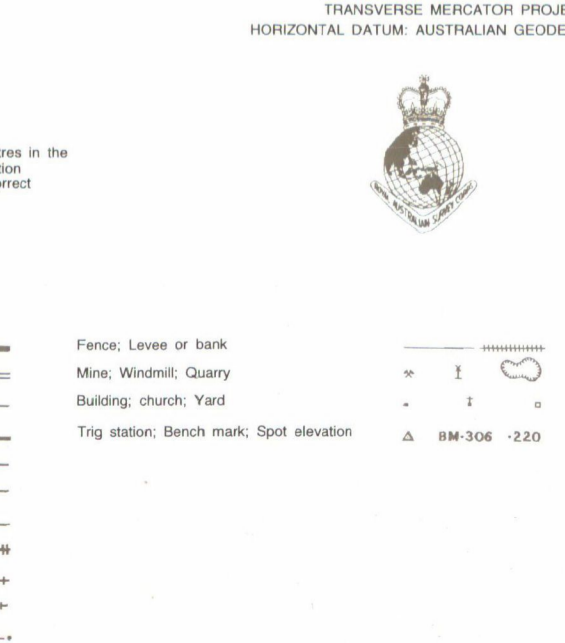
Mapping Unit	Major Characteristics of Dominant Soil	Great Soil Group	Principal Australian Profile Classification	Vegetation Dominant Species	Area (ha)
<b>SOILS OF THE VERY GENTLY UNUNDULATING PLATEAUS AND PLATEAU REMNANTS ON ALTERED TERTIARY ROCKS</b>					
Md	Mendilla Very shallow (<300mm), gravelly, red soil; rock outcrop	Lithosol	Uc1.21 Lepic Rudosol	Narrow leaved ironbark or grey box or wattles	3 185
Kr	Karubuh Very shallow (<400mm), gravelly, black soil; rock outcrop	Lithosol	Uc1.24 Lepic Rudosol	Narrow leaved ironbark or grey box or wattles	31
Fl	Flinton Loamy surface, with acid red massive subsoil	Red earth	Gnd.11 Red Kandosol	Narrow leaved ironbark or cypress pine or poplar box	1 626
<b>Texture contrast soils</b>					
Nr	Naren This surface (<120mm), bleached, over acid brown to black clay subsoil	Solich	Dd1.41 Black Kurosol	Grey box or belah or narrow leaved ironbark	935
Kb	Kagabilla Moderately thick surface (<600mm), bleached, over acid black clay subsoil	Solich	Dd1.41 Black Kurosol	Grey box or belah or narrow leaved ironbark	746
Wg	Widgwa Bleached surface, over acid red clay subsoil	Solich	Dd3.41 Red Sodosol	Grey box or poplar box or narrow leaved ironbark	1 146
Ar	Arrowsfield Bleached surface, over alkaline brown clay subsoil; blocky subsoil	Solich soil	Dd1.43 Brown Sodosol	Grey box or belah or poplar box	9 749
Ib	Iban Cobble surface, over alkaline brown clay subsoil	Solich soil	Dd1.23 Brown Sodosol	Grey box or belah or kurupang	344
Ur	Uranilla Bleached sandy surface, over alkaline red-brown clay subsoil; very coarse (>200mm) columnar subsoil structure	Solichized solonchalc	Dy2.43 Red Sodosol	Bulb oak or cypress pine or grey box	113
Bg	Bulgar Bleached loamy surface, over alkaline brown clay subsoil; coarse (100mm) columnar subsoil structure	Solichized solonchalc	Dy2.43 Brown Sodosol	Poplar box or grey box	91
Tv	Trevanna Bleached loamy surface, over alkaline brown clay subsoil; medium (50mm) columnar subsoil structure	Solichized solonchalc	Dd1.43 Brown Sodosol	Grey box or belah or poplar box	1 654
<b>Uniform clay soils</b>					
Bc	Barclay Grey or brown, neutral to acid, cracking clay; melonhole gilgai	Grey clay	Ug5.24 GreyVertisol Ug5.34 Vertisol	Belah or brigalow	10 651
<b>Texture contrast soils</b>					
Co	Coorang Hardsetting, bleached loamy surface, over brown clay subsoil	Solich soil	Dd1.43 Brown Sodosol	Poplar box or belah	896
Bt	Butler Thin (<100mm) clay loamy surface, bleached, over black clay subsoil	Solich soil	Dd1.43 Black Sodosol	Poplar box or belah	2 130
Mo	Morilla Clay loamy surface, sporadically bleached, over alkaline black clay subsoil; coarse (50mm) blocky subsoil structure	Solich soil	Dd1.33 Black Sodosol	Belah	1 505
My	Moruya Bleached clay loamy surface, over alkaline red clay subsoil	Red brown earth	Dy2.43 Red Chromosol	Belah or poplar box	1 606
<b>Self-mulching and cracking with tillage</b>					
Rw	Rockwood Thin (<100mm) clay loamy surface, over alkaline red clay subsoil; medium (15mm) blocky strongly structured subsoil	No suitable group	Dd2.13 Red Sodosol	Belah or brigalow or poplar box	359
Mt	Mt Carmel Thin (<100mm) clay loamy surface, over alkaline black or brown clay subsoil; coarse (30mm) blocky strongly structured subsoil	No suitable group	Dd1.33 Blackbrown Sodosol	Belah	19 610
Pt	Portwell Thin (<100mm) clay loamy surface, over alkaline brown or black clay subsoil; medium (15mm) blocky strongly structured subsoil; overlies sandstone or siltstone	No suitable group	Dd1.13 Brownblack Sodosol	Belah or brigalow	12 554
<b>Uniform clay soils</b>					
Uk	Ukabilla Linear gilgai association overlying sandstone with occasional rock outcrop; mounds: red-brown or black cracking clay; depressions: hardsetting, bleached, brown or black texture contrast soil	Redbrown earth	Ug5.37 Redblack Vertisol Ug5.13 Vertisol Dd1.43 Blackbrown Sodosol	Silver leaved ironbark or belah or poplar box	1 899
Ta	Tarewnabar Linear gilgai association overlying sandstone below 800mm; mounds: fine self-mulching black cracking clay; depressions: coarse self-mulching black cracking clay	Black earth	Ug5.12 Black Vertisol	Queensland blue grass	386
Wy	Wyndrii Self-mulching grey or brown cracking clay overlying sandstone or siltstone	Black earth	Ug5.12 Black Vertisol Ug5.32 Vertisol	Belah or brigalow	8 822
Bu	Bulbina Deep (>1500 mm) self-mulching black cracking clay	Black earth	Ug5.16 Black Vertisol	Belah or poplar box or myall	4 684
Ma	Maramba Deep (>1500 mm) grey or brown cracking clay, neutral to alkaline; occasional melonhole gilgai	Greybrown clay	Ug5.25 Greybrown clay Ug5.34 Vertisol	Brigalow or belah	3 973
Ca	Cairnguna Deep (>1500 mm) self-mulching grey cracking clay; melonhole gilgai	Grey clay	Ug5.25 Grey Vertisol	Belah or brigalow	8 444
Ar	Arden Deep (>1500 mm) self-mulching red cracking clay; normal gilgai	Red clay	Ug5.38 Red Vertisol	Belah or brigalow	263
<b>SOILS OF THE VERY GENTLY UNUNDULATING RIVERINE PLAINS</b>					
<b>Uniform sands</b>					
Sh	Shurt Deep (>1500mm) yellow brown sand	Earthy sand	Uc5.11 Arenic Rudosol	Cypress pine or tumble-down gum	2 914
<b>Texture contrast soils</b>					
Bs	Bendiside Thick (400-800mm) sandy surface, bleached, over mottled yellow-brown clay subsoil	Solichized solonchalc	Dy5.43 Grey Sodosol	Cypress pine or bulb oak	2 063
Ro	Roo Thin (<150mm) sandy surface, bleached, over brown clay subsoil	Solich soil	Dd3.43 Brown Sodosol	Poplar box or grey box	1 349
Mi	Moorookbar Loamy surface, bleached, over red-brown clay subsoil; medium (50mm) columnar subsoil structure	Solichized solonchalc	Dy2.43 Red Sodosol	Poplar box or cypress pine	2 573
Lk	Lankey Thin (<100mm) loamy surface, bleached, over brown clay subsoil; very coarse (>200mm) columnar subsoil structure	Solichized solonchalc	Dy2.43 Brown Sodosol	Poplar box or bulb oak	6 647
Wi	Wilge Thin (<100mm) loamy surface, bleached, over black clay subsoil; very coarse (>50mm) blocky subsoil structure	Solich soil	Dd1.43 Black Sodosol	Belah or poplar box	15 871
Pd	Pindari Clay loamy surface, bleached, over brown to red clay subsoil; coarse (20-50mm) blocky subsoil structure	Solich soil	Dd1.13 Brownblack Sodosol	Belah or poplar box or grey box	17 310
Yr	Yarril Silty surface, bleached, over brown or black clay subsoil	Solich soil	Dd1.43 Brown Sodosol	Poplar box	755
Bn	Banool Clay loamy surface, over brown or black clay subsoil; medium (10-20mm) blocky strongly structured subsoil	No suitable group	Dd1.33 Brown Chromosol	Belah	1 899
<b>Uniform clay soils</b>					
Dp	Dunlop Grey or black cracking clay	Grey clay/black earth	Ug5.24 Grey/black Vertisol	Belah	3 506
Wo	Wondall Self-mulching, grey cracking clay; alkaline, melonhole gilgai	Grey clay	Ug5.24 Grey Vertisol	Belah or brigalow	38 825
Bk	Bunker Brown or grey cracking clay; neutral to acid, melonhole gilgai	Brown/grey clay	Ug5.34 Brown/grey Vertisol	Belah or brigalow	5 217
<b>SOILS OF THE VERY GENTLY UNUNDULATING RIVERINE PLAINS</b>					
<b>Uniform sands</b>					
Wd	Wondooze Shallow (>1500mm) brown or yellow brown sand	Earthy sand	Uc5.21 Arenic Rudosol	Cypress pine or carbeem or river red gum	6410
Ww	Wai Wai Deep (>1500mm) red sand	Earthy sand	Uc4.21 Orthic Tanosol	Cypress pine or carbeem or long fruited bloodwood	255
<b>Uniform clay loams</b>					
Sl	Salmood Shallow (<500mm) brown soil, neutral, sandy to silty clay loam over layered sand and clay	Prairie soil/intergrade	Umlt.33 Brown Vertisol Umlt.12 Dermosol	River red gum or silver leaved ironbark	1 187
<b>Texture contrast soils</b>					
Bd	Brendle Moderately deep (>1000mm) texture contrast soil overlying sand and clay; sandy surface, over brown neutral sandy clay subsoil	No suitable group	Dd3.12 Brown Sodosol	Cypress pine or poplar box	1 333
Ba	Balin Moderately thick (600-500mm) sandy surface, bleached, over mottled yellow-brown clay subsoil	Solich soil	Dy3.43 Grey Sodosol	Cypress pine or poplar box	3 715
Ma	Marella Firm to hardsetting, loamy surface, sporadically bleached, over brown clay subsoil	Solich soil	Dd1.33 Brown Sodosol	Poplar box or cypress pine or silty surface	7 604
Hd	Herdan Thin (<120mm) loamy surface, bleached, over brown clay subsoil; coarse (>150 mm) columnar subsoil structure	Solichized solonchalc	Dd1.43 Brown Sodosol	Poplar box or bulb oak	1 153
Bl	Blackat Clay loamy surface, bleached, over black or brown clay subsoil	Solichized solonchalc	Dd1.43 Blackbrown Sodosol	Poplar box	857
Cr	Crane Thin (<100mm) clay loamy surface, bleached, over brown clay subsoil	Solich soil	Dd1.43 Brown Sodosol	Poplar box	5 755
On	Onosvale Loam to clay loamy surface (>100 mm), bleached, over brown clay subsoil	Solich soil	Dd1.43 Brown Sodosol	Poplar box or cypress pine	8 656
Yc	Yambouilly Silty surface, bleached, over black clay subsoil	Solich soil	Dd1.43 Black Sodosol	Poplar box or belah	10 183
Dv	Doolanvale Clay loamy surface over black or brown clay subsoil; medium (20mm) blocky strongly structured subsoil	No suitable group	Dd1.13 Brown Sodosol	Belah	242
<b>SOILS OF THE LEVEL RIVERINE PLAINS</b>					
<b>Uniform clay soils with neutral or acid subsoil</b>					
Gd	Goober Sporadically bleached, black non-cracking clay	No suitable group	U3 Black Dermosol	Poplar box	925
Gg	Gidd Gidd Sporadically bleached, grey-brown cracking clay	No suitable group	Ug3.2 Grey Vertisol	Coolbah	7 166
Mv	Mumvere Brown or grey cracking clay	Brown/grey clay	Ug5.34 Brown/grey Vertisol	Brigalow or belah	878
Co	Cooper Crusting, brown cracking clay	Brown clay	Ug5.34 Brown Vertisol	Brigalow or coolbah	249
<b>Uniform clay soils with alkaline subsoil</b>					
Gd	Gallandoon Black or grey cracking clay; normal gilgai	Aflinites with grey clay	Ug5.15 Blackgrey Vertisol Ug5.25 Vertisol	Coolbah or river red gum	1 548
Eu	Eureka Sporadically bleached, black or grey cracking clay	Aflinites with grey clay	Ug3.1 Blackgrey Vertisol	Coolbah or river red gum	3 378
Ma	Macintyre Black or grey cracking clay; very coarse (>50mm) blocky weakly structured subsoil	Aflinites with grey clay	Ug5.16 Blackgrey Vertisol	Hoop Mitchell grass	8 688
Cr	Crooked Coarse self-mulching, black or grey cracking clay	Aflinites with black earth	Ug5.16 Blackgrey Vertisol	Coolbah or belah	6 090
Ts	Testabar Coarse sandy, self-mulching, black cracking clay	Black earth	Ug 5.16 Black Vertisol	Belah	1 318
Un	Undabri Self-mulching, black cracking clay	Black earth	Ug5.16 Black Vertisol	Belah	1 889
St	Strathmore Grey or brown cracking clay; melonhole gilgai	Greybrown clay	Ug5.24 Greybrown Vertisol	Brigalow or belah	425
<p>• 293 • W13 Soil sampling sites (84) Unique map area (UMA) number</p>					

EDITION 1-AAS  
SERIES R631

**MAP ACCURACY:** The average accuracy of this map is (+/-) 25 metres in the horizontal direction of well defined detail and (+/-) 15 metres in elevation. The accuracy of the map is dependent on the accuracy of the data used and the reliability of the information shown on this map is correct to 1975.

**LEGEND:**

- Build-up area, National route marker
- Road sealed surface two or more lanes
- Road sealed surface one lane, Embankment
- Road sealed surface one lane, Cutting
- Road unsealed surface two or more lanes
- Road unsealed surface one lane, Cutting
- Vehicular track, Road bridge
- Gate, Cattle grid
- Railway multiple track, Station, Siding
- Railway single track, Railway bridge
- Light railway or tramway, Railway tunnel
- Power transmission line (across country)
- Fence: Leases or bank
- Mine, Windmill, Quarry
- Building, church, Yard
- Tri station; Bench mark; Spot elevation
- Orchard or vineyard; Mangrove
- Swamp perennial, intermittent
- Lake permanent, Seasonal/flowed
- Lake permanent, Stream intermittent
- Lake mainly dry, Stream mainly dry
- Bore or Well; Spring; Tank or small dam
- Saltine coastal lagoon; Freshwater lake
- Sand; Wharf exposed; Rock bare or awash
- Lighthouse; Breakwater; Pier; Wharf
- Cuevine expanse; Loggia; Reef



**SCALE 1 : 100 000**

TRANSVERSE MERCATOR PROJECTION  
HORIZONTAL DATUM: AUSTRALIAN GEODETIC DATUM 1986

SCALE 1 : 100 000

GREY NUMBERED GRID LINES INDICATE 1000 METRE INTERVALS OF THE AUSTRALIAN MAP GRID, ZONE 56  
GRID VALUES ARE SHOWN IN FULL ONLY AT THE SOUTH WEST CORNER OF THE MAP

**UNIVERSAL GRID REFERENCE**

TO GIVE A STANDARD REFERENCE ON THIS SHEET TO NEAREST 100 METRES

SAMPLE POINT: 218

1 Read down vertically 100 000 metre square in which the point lies.  
2 Read left horizontally 100 000 metre square in which the point lies.  
3 Estimate metres from grid line to point.

4 Locate first HORIZONTAL digit the SECOND digit read LASTLY. Square labelling the line in either the left or right margin, or on the line itself.

5 Estimate tenths from the grid line to the point.

SAMPLE REFERENCE: KP51311

6 Reporting figures '10' in any direction, prefix Grid Zone designation as: SLP251631

GRID COORDINATE  
1000 METRES  
100 METRES  
10 METRES

TRUE NORTH, GRID NORTH AND MAGNETIC NORTH ARE SHOWN DIAGRAMMATICALLY FOR THE CENTRE OF THE MAP. MAGNETIC NORTH IS CORRECT FOR 1975 AND MOVES EASTWARD BY 0.17° EACH YEAR IN ABOUT FOUR YEARS.



**INDEX TO ADJOINING MAPS**

FLINTON 842 MOORE 841 WAIR WARR 842

BUNDINGA 841 GOODAR 841 RYGA 841

MOORE 840 GOONDRINA 840 FERNBERG 840

NEW SOUTH WALES

**GOODAR SHEET 841  
QUEENSLAND**

**INTENSITY STATEMENT**

This is a low intensity soil survey. It is based on aerial photograph interpretation and recorded ground observations of the order of one observation to an approximate area of 170 ha.

**NOTES:**

- Mapping units are named after the dominant soil profile class. Where two soils occur as a complex, two symbols are used. For example A/B/C is a complex of Arrowsfield and Barclay.
- Great Soil Group after Black et al. (1985), A Handbook of Australian Soils.
- Principal Profile Form after Northcote, K.H. (1979), A Factual Key for the Recognition of Australian Soils.
- Australian Classification after Isenack, P.F. (1993), A Classification System for Australian Soils, 3rd Approximation.

**SURVEY BY:** D.J. Ross and A.J. Crane, Land Management Division, Department of Primary Industries, Queensland.

**CARTOGRAPHY BY:** D.O. Gooding, Land Management Division, Department of Primary Industries, Brisbane.

**BASE MAP:** compiled from the 1:100 000 Topographic Series (Goodar 8841) published by the Royal Australian Survey Corps.

**PRINTED BY:** GOVERNMENT PRINTERS, BRISBANE, 1985.

© The State of Queensland, Department of Primary Industries, 1985.

**DISCLAIMER:**

This is a scanned image and some detail may be illegible or lost. While every care is taken to ensure the accuracy of this product, the Department of Natural Resources and Mines makes no representations or warranties about its accuracy, reliability, completeness or suitability for any particular purpose and disclaims all responsibility and all liability (including without limitation, liability in negligence) for all expenses, losses, damages (including indirect or consequential damage) and costs which you might incur as a result of the product being inaccurate or incomplete in any way for any reason.

**LAND RESOURCE ASSESSMENT  
GOODAR AREA QUEENSLAND  
SOILS**  
DPI Ref No. 94-GDR-1-P3098