



**VARIATION OF CONDITIONS ATTACHED TO APPROVAL  
Bruce Highway, Cooroy to Curra (Section D, Woondum to Curra), east of  
Gympie, Queensland (EPBC 2017/7941)**

This decision to vary conditions of approval is made under section 143 of the *Environment Protection and Biodiversity Conservation Act 1999* (EPBC Act).

**Approved action**

---

<b>Person to whom the approval is granted</b>	Department of Transport and Main Roads ACN: 39 407 690 291
---	---

---

<b>Approved action</b>	To upgrade and realign an existing 26 kilometre section of the Bruce Highway, including a bypass between Cooroy and Curra, east of Gympie, Queensland.
------------------------	--

---

**Variation**

---

<b>Variation of conditions attached to approval</b>	The variation is:  Delete conditions 3 and 7 attached to the approval and substitute with the conditions specified in the table below  Add definitions of <b>Cat's Claw Creeper</b> and <b>Cat's Claw Creeper Survey and Control Program</b> specified in the table below
---	---

---

<b>Date of effect</b>	This variation has effect on the date the instrument is signed
-----------------------	--

---

**Person authorised to make decision**

---

<b>Name and position</b>	Declan O'Connor-Cox Assistant Secretary A/g Assessments (Vic, Tas) and Post Approvals Branch
--------------------------	--

---

<b>Signature</b>	
------------------	---

---

<b>Date of decision</b>	7 September 2020
-------------------------	------------------

---

Date of decision	ANNEXURE A – CONDITIONS OF APPROVAL
	<b>Part A – Conditions specific to the action</b>
Variation dated 20/4/2020	<p><b>Project requirements</b></p> <p>1. Within the <b>impact site</b>, the approval holder must not clear more than:</p> <ol style="list-style-type: none"> <li>2 hectares of <b>Lowland rainforest</b>;</li> <li>8.08 hectares of <b>Black-breasted Button-quail habitat</b>; and</li> <li>135.83 hectares of <b>Koala habitat</b>.</li> </ol>
Original dated 24/9/2019	<p>2. Prior to <b>commencement</b>, a <b>suitably qualified person</b> must undertake a baseline survey to determine the extent (in hectares) and <b>quality of Lowland rainforest</b> in the <b>riparian area</b> of Six Mile Creek. Surveys must be undertaken in accordance with the best practice guidelines in effect at the time of the surveys. The approval holder must publish the results of the baseline surveys in the first annual compliance report required under condition 20.</p>
As varied on the date this instrument was signed	<p>3. To encourage the continued ecological value of the <b>Lowland rainforest</b> in the <b>riparian area</b> of Six Mile Creek, the approval holder must, within four years of <b>commencement</b>, provide at least \$75 000 of funding to extend the duration and/or extent of the <b>Cat's Claw Creeper Survey and Control Program</b>.</p>
Original dated 24/9/2019	<p>4. Prior to <b>operation</b> of the action, the approval holder must establish <b>fauna connectivity structures</b> and <b>fauna exclusion fencing</b>. Once established, the <b>fauna connectivity structures</b> and <b>fauna exclusion fencing</b> must be maintained by the approval holder for the duration of the approval. <b>Exclusion fencing</b> must include gates that are secured at all times with padlocks or a similar break-proof securing mechanism.</p>
Original dated 24/9/2019	<p><b>Translocation requirements</b></p> <p>5. Prior to any translocation of <b>Pineapple zamia</b> plants, the approval holder must:</p> <ol style="list-style-type: none"> <li>record the number of <b>viable adult Pineapple zamia</b> plants at the <b>impact site</b>;</li> <li>collect enough seeds from <b>Pineapple zamia</b> plants at the <b>impact site</b> and, if necessary, from <b>alternative sites</b>, to enable replacement of no less than 48 per cent of the number of <b>adult Pineapple zamia</b> plants at the impact site; and</li> <li><b>legally secure the translocation site</b>.</li> </ol>
Original dated 24/9/2019	<p>6. Prior to <b>commencement</b> of <b>Contract 2</b>, the approval holder must translocate every <b>Pineapple zamia</b> plant from the <b>impact site</b> to the <b>translocation site</b>. Within 20 <b>business days</b> of removing the last <b>Pineapple zamia</b> plant from the <b>impact site</b>, the approval holder must notify the <b>Department</b> of the date the last <b>Pineapple zamia</b> plant was removed and the total number of <b>Pineapple zamia</b> plants removed (specifying the number of <b>adult Pineapple zamia</b> plants removed and the number of <b>seedling Pineapple zamia</b> plants removed).</p>
As varied on the date this instrument was signed	<p>7. The approval holder must ensure any <b>adult Pineapple zamia</b> plant that suffers mortality at the <b>translocation site</b>, within 5 years of the date the last <b>Pineapple zamia</b> plant was removed from the <b>impact site</b>, is replaced by 4 <b>Pineapple zamia</b> plants. Replacement plants must be sourced from</p>

Date of decision	<b>ANNEXURE A – CONDITIONS OF APPROVAL</b>
	propagation of seeds collected from the <b>impact site</b> or from <b>alternative sites</b> . Replacement plants must be planted within 3 years of the mortality of the plant they are replacing.
Original dated 24/9/2019	8. By one year before the end date of this approval, the approval holder must ensure that the number of <b>Pineapple zamia</b> plants that exist at the <b>translocation site</b> is at least 1.5 times the number of <b>Pineapple zamia</b> plants translocated from the <b>impact site</b> , as reported under condition 6.
variation dated 20/4/2020	<p><b>Koala and Black-breasted Button-quail Offset requirements</b></p> <p>9. To compensate for the loss of 135.83 hectares of <b>Koala habitat</b> and 8.08 hectares of <b>Black-breasted Button-quail habitat</b>, the approval holder must, prior to <b>commencement</b>, <b>legally secure</b> a minimum of 280.36 hectares at the <b>Koala offsets areas</b> and 32.15 hectares at the <b>Black-breasted Button-quail offset area</b>. Within 20 <b>business days</b> of securing the <b>Koala offset areas</b> and <b>Black-breasted Button-quail offset area</b>, and prior to <b>commencement</b>, the approval holder must provide the <b>Department</b> with evidence of the date(s) on which the <b>Koala offset areas</b> and <b>Black-breasted Button-quail offset area</b> were <b>legally secured</b> and electronic spatial data (<b>shapefiles</b>) and <b>offset attributes</b> of the <b>Koala offset areas</b> and <b>Black-breasted Button-quail offset area</b>.</p>
Original dated 24/9/2019	<p>10. Within 6 months of <b>legally securing</b> the <b>Koala offset areas</b> and <b>Black-breasted Button-quail offset area</b>, the approval holder must complete baseline surveys of the entire <b>Koala offset areas</b> and <b>Black-breasted Button-quail offset area</b>. The baseline surveys must be conducted by a <b>suitably qualified person</b> in accordance with the most recently published version of the <b>Department's survey guidelines</b> and include details of:</p> <ul style="list-style-type: none"> <li>a. the <b>quality</b> of <b>Black-breasted Button-quail habitat</b> and <b>Koala habitat</b>;</li> <li>b. <b>weed infestation</b>;</li> <li>c. <b>Koala density</b> and <b>Black-breasted Button-quail presence</b>; and</li> <li>d. <b>pest abundance</b>.</li> </ul>
Original dated 24/9/2019	<p>11. Within 1 year of legally securing the <b>Koala offset areas</b> and <b>Black-breasted Button-quail offset area</b>, the approval holder must publish on the <b>website</b> and provide to the <b>Department</b> a report detailing:</p> <ul style="list-style-type: none"> <li>a. the results of the baseline surveys required under condition 10;</li> <li>b. management measures, prepared by a <b>suitably qualified person</b> and subsequently reviewed by an independent <b>suitably qualified person</b>, (including timing, frequency and longevity) that will be implemented to deliver the outcomes required by condition 12, including: <ul style="list-style-type: none"> <li>i. performance and completion criteria for evaluating the success of the management measures and criteria for triggering remedial action (if necessary);</li> <li>ii. a program, including timelines, to monitor (capable of timely detection of triggers for corrective action) and report on the effectiveness of the management measures, and progress against the performance and completion criteria;</li> </ul> </li> </ul>

Date of decision	ANNEXURE A – CONDITIONS OF APPROVAL
	<ul style="list-style-type: none"> <li>iii. remediation measures to be implemented where monitoring of the performance criteria indicate failure to achieve the outcomes of condition 12; and</li> <li>iv. a description of potential risks to the successful implementation of the management measures and a description of the control measures that would be implemented to mitigate against these risks and residual risk ratings.</li> </ul>
Variation dated 20/4/2020	<p>12. The approval holder must:</p> <ul style="list-style-type: none"> <li>a. For the duration of the approval, ensure no net loss in the <b>quality</b> and extent of <b>Black-breasted Button-quail habitat</b> and the <b>Koala habitat</b> within the <b>Koala offset areas</b> and <b>Black-breasted Button-quail offset area</b> compared to the baseline survey data reported under condition 11a;</li> <li>b. Within 12 months of completing the baseline surveys required by condition 11a for the <b>Koala offset areas</b>, commence implementation of an ongoing <b>Koala food tree</b> replanting program in the <b>Koala offset areas</b>. The replanting program must be undertaken by a <b>suitably qualified person</b> and include measures to ensure the maintenance and survival of new <b>Koala food trees</b> in the <b>Koala offset areas</b>;</li> <li>c. Within 15 years of completing the baseline surveys required by condition 11a, demonstrate a 20% increase in <b>Koala food tree</b> recruitment over the entire <b>Koala offset areas</b> compared to the baseline survey results reported as required under condition 11a;</li> <li>d. Demonstrate the following reductions in <b>weed infestation</b> in all of the <b>Koala offset areas</b> and the <b>Black-breasted Button-quail offset area</b> compared to the baseline data reported as required under condition 11a: <ul style="list-style-type: none"> <li>i. 50% reduction within 3 years of completing the baseline surveys required by condition 11a;</li> <li>ii. 90% reduction within 10 years of completing the baseline surveys required by condition 11a;</li> </ul> </li> <li>e. Within 15 years of completing the baseline surveys required by condition 11a, demonstrate than an increase of at least 50% of <b>Koala density</b> has been achieved across the entirety of the <b>Koala offset areas</b> compared to the baseline data reported under condition 11a. To determine progress towards this outcome, <b>Koala density</b> surveys must be undertaken across the entirety of the <b>Koala offset areas</b> by a <b>suitably qualified person</b> within both 5 and 10 years respectively of completing the baseline surveys required by condition 11a. Contingency measures must be implemented to increase <b>Koala density</b> across the entire <b>Koala offset areas</b> where the results of these surveys indicate no or minimal increases in <b>Koala density</b>;</li> <li>f. Demonstrate a reduction across each of the <b>Koala offset areas</b> and the <b>Black-breasted Button-quail offset area</b>, maintained for at least 10 consecutive years from completion of the baseline surveys required by condition 11a, in <b>pest abundance</b> compared to the baseline data reported under condition 11a;</li> <li>g. Report to the <b>Department</b> in each <b>compliance report</b> required under condition 20, matters required under condition 11b, and progress towards and achievement of the outcome milestones specified in this</li> </ul>

Date of decision	<b>ANNEXURE A – CONDITIONS OF APPROVAL</b>
	condition 12.
Variation dated 20/4/2020	<p><b>Lowland rainforest offset requirements</b></p> <p>13. To compensate for the loss of 2 hectares of <b>Lowland rainforest</b>, the approval holder must submit an Offset Strategy prepared by a <b>suitably qualified person</b> in accordance with the <b>Environmental Management Plan Guidelines</b> and the principles of the <b>EPBC Act Environmental Offsets Policy</b>. The action must not <b>commence</b> until the Offset Strategy has been approved by the <b>Minister</b> in writing. The approved Offset Strategy must be implemented and published on the <b>website</b>. The Offset Strategy must:</p> <ul style="list-style-type: none"> <li>a. provide a written description and map that clearly defines the location and boundaries of the proposed offset area(s) for <b>Lowland rainforest</b> and includes <b>offset attributes</b> and <b>shapefiles</b>;</li> <li>b. include timelines and mechanisms for <b>legally securing</b> the offset area(s);</li> <li>c. demonstrate the presence of <b>Lowland rainforest</b> in the proposed offset area(s) and the <b>quality</b> of the <b>Lowland rainforest</b> in the proposed offset area(s), including evidence that it meets the <b>threshold criteria</b> for <b>Lowland rainforest</b>;</li> <li>d. commit to ecological outcomes and offset completion criteria for <b>Lowland rainforest</b> and the timeframes in which these will be achieved;</li> <li>e. include time bound performance and completion criteria for evaluating that ecological outcomes have been achieved and criteria for triggering remedial action;</li> <li>f. commit to a program to monitor and report on progress against the performance and completion criteria.</li> </ul>
Original dated 24/9/2019	<p><b>Corrective action requirements</b></p> <p>14. If, at any time during the life of the approval, the <b>Minister</b> is not satisfied that the outcomes required under conditions 3, 8 or 12 are likely to be achieved, or is not satisfied there is sufficient evidence that the outcomes required under conditions 3, 8 or 12 are likely to be achieved (including on the basis of information provided in compliance reports and or audit(s) under these conditions of approval), the <b>Minister</b> may require the approval holder to submit a corrective action plan for the <b>Minister’s</b> approval, to monitor, manage, avoid, mitigate, offset, record or report on, impacts to <b>Pineapple zamia</b>, <b>Lowland rainforest</b>, the <b>Black-breasted Button-quail</b> and/or the <b>Koala</b>.</p> <ul style="list-style-type: none"> <li>a. The <b>Minister</b> may set a timeframe in which the corrective action plan must be submitted, and may specify that the corrective action plan must be prepared or reviewed by a <b>suitably qualified person</b> (or another specified person).</li> <li>b. If the <b>Minister</b> approves the corrective action plan, the approval holder must implement the approved corrective action plan.</li> </ul>

Date of decision	<b>ANNEXURE A – CONDITIONS OF APPROVAL</b>
	<b>Part B – Standard administrative conditions</b>
Original dated 24/9/2019	<p><b>Commencement</b> of the action</p> <p>15. The approval holder must notify the <b>Department</b> in writing of the date of <b>commencement</b> within 10 <b>business days</b> after the date of <b>commencement</b>.</p>
Original dated 24/9/2019	<p><b>Compliance records</b></p> <p>16. The approval holder must maintain accurate and complete <b>compliance records</b>.</p>
Original dated 24/9/2019	<p>17. If the <b>Department</b> makes a request in writing, the approval holder must provide electronic copies of <b>compliance records</b> to the <b>Department</b> within the timeframe specified in the request.</p> <p>Note: <b>Compliance records</b> may be subject to audit by the <b>Department</b> or an independent auditor in accordance with section 458 of the <b>EPBC Act</b>, and or used to verify compliance with the conditions. Summaries of the result of an audit may be published on the <b>Department's</b> website or through the general media.</p>
Original dated 24/9/2019	<p><b>Preparation and publication of plans</b></p> <p>18. The approval holder must:</p> <ol style="list-style-type: none"> <li>a. submit <b>plans</b> electronically to the <b>Department</b> for approval by the <b>Minister</b>;</li> <li>b. publish each <b>plan</b> on the <b>website</b> within 20 <b>business days</b> of the date the <b>plan</b> is approved by the <b>Minister</b> or of the date a revised plan is submitted to the <b>Minister</b>, unless otherwise agreed to in writing by the <b>Minister</b>;</li> <li>c. exclude or redact <b>sensitive ecological data</b> from <b>plans</b> published on the <b>website</b> or provided to a member of the public; and</li> <li>d. keep <b>plans</b> published on the <b>website</b> until the end date of this approval.</li> </ol>
Original dated 24/9/2019	<p>19. The approval holder must ensure that any <b>monitoring data</b> (including <b>sensitive ecological data</b>), surveys, maps, and other spatial and metadata required the conditions of this approval, is prepared in accordance with the <b>Department's Guidelines for biological survey and mapped data</b> (2018) and submitted electronically to the <b>Department</b> with the relevant <b>plan</b>.</p>
Original dated 24/9/2019	<p><b>Annual compliance reporting</b></p> <p>20. The approval holder must prepare a <b>compliance report</b> for each 12 month period following the date of <b>commencement</b>, or as <u>otherwise agreed to in writing by the <b>Minister</b></u>. The approval holder must:</p> <ol style="list-style-type: none"> <li>a. publish each <b>compliance report</b> on the <b>website</b> within 60 <b>business days</b> following the relevant 12 month period;</li> <li>b. notify the <b>Department</b> by email that a <b>compliance report</b> has been published on the <b>website</b> within 5 <b>business days</b> of the date of publication;</li> <li>c. keep all <b>compliance reports</b> publicly available on the <b>website</b> until this approval expires;</li> </ol>

Date of decision	<b>ANNEXURE A – CONDITIONS OF APPROVAL</b>
	<p>d. <u>exclude</u> or redact <b>sensitive ecological data</b> from <b>compliance reports published on the website</b>; and</p> <p>e. where any <b>sensitive ecological data</b> has been excluded from the version published, submit the full <b>compliance report</b> to the <b>Department</b> within <b>5 business days</b> of publication.</p> <p>Note: <b>Compliance reports</b> may be published on the <b>Department's</b> website.</p>
Original dated 24/9/2019	<p><b>Reporting non-compliance</b></p> <p>21. The approval holder must notify the <b>Department</b> in writing of any: <b>incident</b>; non-compliance with the conditions; or non-compliance with the commitments made in <b>plans</b>. The notification must be given as soon as practicable, and no later than <b>5 business days</b> after becoming aware of the <b>incident</b> or non-compliance. The notification must specify:</p> <ol style="list-style-type: none"> <li>a. the condition which is or may be in breach; and</li> <li>b. a short description of the <b>incident</b> and or non-compliance.</li> </ol>
Original dated 24/9/2019	<p>22. The approval holder must provide to the <b>Department</b> the details of any <b>incident</b> or non-compliance with the conditions or commitments made in <b>plans</b> as soon as practicable and no later than <b>10 business days</b> after becoming aware of the <b>incident</b> or non-compliance, specifying:</p> <ol style="list-style-type: none"> <li>a. any corrective action or investigation which the approval holder has already taken or intends to take in the immediate future;</li> <li>b. the potential impacts of the <b>incident</b> or non-compliance; and</li> <li>c. the method and timing of any remedial action that will be undertaken by the approval holder.</li> </ol>
Original dated 24/9/2019	<p><b>Independent audit</b></p> <p>23. The approval holder must ensure that <b>independent audits</b> of compliance with the conditions are conducted as requested in writing by the <b>Minister</b>.</p>
Original dated 24/9/2019	<p>24. For each <b>independent audit</b>, the approval holder must:</p> <ol style="list-style-type: none"> <li>a. provide the name and qualifications of the independent auditor and the draft audit criteria to the <b>Department</b>;</li> <li>b. only commence the <b>independent audit</b> once the audit criteria have been approved in writing by the <b>Department</b>; and</li> <li>c. submit an audit report to the <b>Department</b> within the timeframe specified in the approved audit criteria.</li> </ol>
Original dated 24/9/2019	<p>25. The approval holder must publish the audit report on the <b>website</b> within <b>10 business days</b> of receiving the <b>Department's</b> approval of the audit report and keep the audit report published on the <b>website</b> until the end date of this approval.</p>
Original dated 24/9/2019	<p><b>Revision of plans</b></p> <p>26. The approval holder may choose to revise a <b>plan</b> or strategy approved by the <b>Minister</b> under condition 13, by submitting an application in accordance with the requirements of section 143A of the <b>EPBC Act</b>. If the <b>Minister</b></p>

<b>Date of decision</b>	<b>ANNEXURE A – CONDITIONS OF APPROVAL</b>
	approves the <b>plan</b> then, from the date specified, the approval holder must implement the <b>plan</b> in place of the previous <b>plan</b> .
Original dated 24/9/2019	<b>Completion of the action</b>  27. Within 20 <b>business days</b> after <b>completion</b> , the approval holder must notify the <b>Department</b> in writing and provide <b>completion data</b> .

<b>Date of decision</b>	<b>Definitions attached to approval</b>
	In these conditions, except where contrary intention is expressed, the following definitions are used.
Original dated 24/9/2019	<b>Adult Pineapple zamia</b> means <b>Pineapple zamia</b> plants that have an underground stem.
Original dated 24/9/2019	<b>Alternative sites</b> means a site or sites that support <b>Pineapple zamia plants</b> in a representative geographical region (as determined by a <b>suitably qualified person</b> ) to the <b>Pineapple zamia</b> plants within the <b>impact site</b> .
Original dated 24/9/2019	<b>Black-breasted Button-quail</b> means the Black-breasted Button-quail ( <i>Turnix melanogaster</i> ) listed as a threatened species under the <b>EPBC Act</b> .
Original dated 24/9/2019	<b>Black-breasted Button-quail habitat</b> means any areas of vegetation that provides habitat suitable for the <b>Black-breasted Button-quail</b> as described in the current conservation and/or recovery plan for the species approved by the <b>Minister</b> .
Variation dated 20/4/2020	<b>Black-breasted Button-quail offset area</b> means the coloured areas of the <b>Offset Properties</b> designated as 'Offset Lots' in the map at <u>Attachment F</u> .
Original dated 24/9/2019	<b>Black-breasted Button-quail presence</b> means number of Black-breasted Button-quail identified on the <b>Black-breasted Button-quail offset area</b> , including evidence of <b>Black-breasted Button-quail</b> foraging, sheltering or otherwise using available habitat within the <b>Black-breasted Button-quail offset area</b> .
Variation dated 20/4/2020	<b>Buffers</b> - Revoked
Original dated 24/9/2019	<b>Business day</b> means a day that is not a Saturday, a Sunday or a public holiday for the whole of Queensland.
As varied on the date this instrument was signed	<b>Cat's Claw Creeper</b> means the Cat's Claw Creeper ( <i>Dolichandra unguis-cati</i> ) listed as a Weed of National Significance.
As varied on the date this instrument was signed	<b>Cat's Claw Creeper Survey and Control Program</b> means the program to survey and control <b>Cat's Claw Creeper</b> developed and being implemented by the Gympie Regional Council and the Mary River Catchment Coordinating Committee.
Original dated 24/9/2019	<b>Commencement</b> means the first instance of the use of heavy duty equipment for the purpose of clearing vegetation or breaking the ground to construct roads



Date of decision	Definitions attached to approval
	<p>associated with the action. This does not include physical disturbance necessary to:</p> <ol style="list-style-type: none"> <li>a. undertake pre-clearance surveys or monitoring programs;</li> <li>b. install signage and or temporary fencing to prevent unapproved use or access to the <b>impact site</b> or the <b>translocation site</b>;</li> <li>c. protect environmental and property assets from fire, weeds and pests, including construction of fencing and maintenance of existing surface access tracks;</li> <li>d. undertake geotechnical investigations;</li> <li>e. relocate public utility plant (e.g. electricity transmission lines); or</li> <li>f. translocate <b>Pineapple Zamia</b> plants from the <b>impact site</b> to the <b>translocation site</b>.</li> </ol>
Original dated 24/9/2019	<b>Completion</b> means the time at which all conditions have been fully met.
Original dated 24/9/2019	<p><b>Completion data</b> means an environmental report and spatial data information clearly detailing how the outcomes required under the conditions of this approval have been met. The <b>Department's</b> preferred spatial data format is <b>shapefile</b>. This includes, but is not limited to information detailing:</p> <ol style="list-style-type: none"> <li>i. the date, location and extent of <b>protected matter</b> habitat cleared within the <b>impact site</b>;</li> <li>ii. the location, extent and <b>quality</b> of <b>protected matter</b> habitat within the <b>Koala offset areas</b> and <b>Black-breasted Button-quail offset area</b>;</li> <li>iii. the date, location and extent of <b>Lowland rainforest</b> cleared within the <b>impact site</b>;</li> <li>iv. the location, extent and <b>quality</b> of offsets for <b>Lowland rainforest</b> as required by the approved Offset Strategy; and</li> <li>v. the number of <b>Pineapple zamia</b> plants at the <b>translocation site</b>.</li> </ol>
Original dated 24/9/2019	<b>Compliance records</b> means all documentation or other material in whatever form required to demonstrate compliance with the conditions of approval. This includes any documentation in the approval holder's possession or that are within the approval holder's power to obtain lawfully.
Original dated 24/9/2019	<p><b>Compliance report(s)</b> means written reports:</p> <ol style="list-style-type: none"> <li>a. providing accurate and complete details of compliance, <b>incidents</b>, and non-compliance with the conditions and the <b>plans</b>;</li> <li>b. consistent with the <b>Department's Annual Compliance Report Guidelines (2014)</b>;</li> <li>c. including a <b>shapefile</b> of any clearance of any <b>protected matters</b>, or their habitat, undertaken within the relevant 12 month period; and</li> <li>d. annexing a schedule of all <b>plans</b> prepared and in existence in relation to the conditions during the relevant 12 month period.</li> </ol>
Original dated 24/9/2019	<b>Contract 2</b> means the Northern Contract of approximately 18 km in length that will extend from north of Sandy Creek Road to Curra as shown in the map at <u>Attachment A</u> .

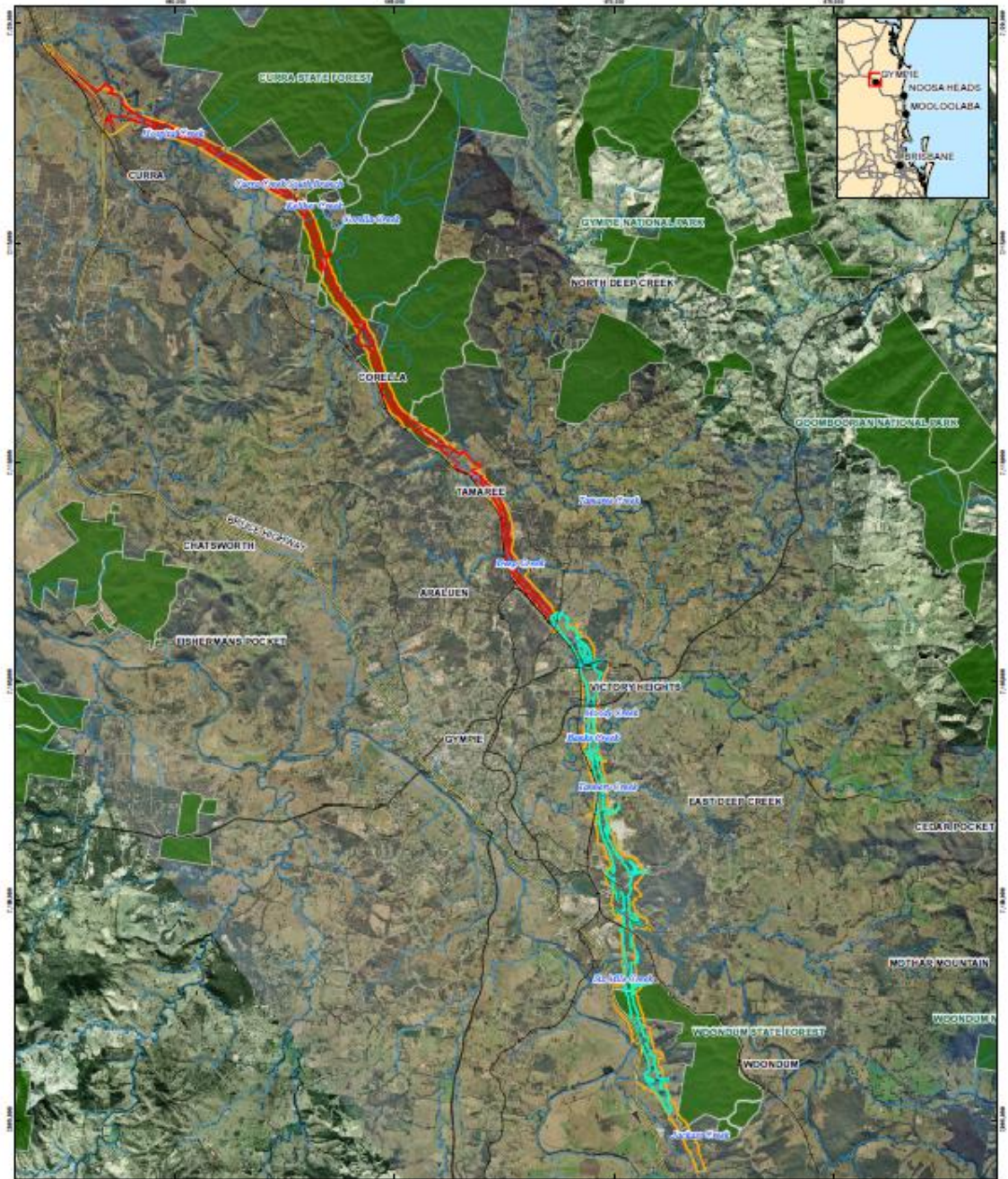
Date of decision	Definitions attached to approval
Original dated 24/9/2019	<b>Department</b> means the Australian Government agency responsible for administering the <b>EPBC Act</b> .
Original dated 24/9/2019	<b>Department's survey guidelines</b> means the relevant Survey Guidelines for Australia's threatened birds and Survey Guidelines for Australia's threatened mammals as published at <a href="http://www.environment.gov.au/epbc/publications#compliance">http://www.environment.gov.au/epbc/publications#compliance</a> , immediately prior to the undertaking of the relevant survey.
Original dated 24/9/2019	<b>EPBC Act</b> means the <i>Environment Protection and Biodiversity Conservation Act 1999</i> (Cth).
Original dated 24/9/2019	<b>EPBC Act Environmental Offsets Policy</b> means the <i>Environment Protection and Biodiversity Conservation Act 1999 Environmental Offsets Policy</i> (October 2012), or subsequent revision, including the Offsets Assessment Guide.
Original dated 24/9/2019	<b>EPBC Act listed threatened species and communities</b> includes the <b>Koala, Black-breasted Button-quail, Pineapple zamia</b> and <b>Lowland rainforest</b> .
Original dated 24/9/2019	<b>Environmental Management Plan Guidelines</b> means the <b>Department's Environmental Management Plan Guidelines</b> . Commonwealth of Australia (2014), or subsequent revision.
Original dated 24/9/2019	<b>Fauna connectivity structure</b> means a structure designed by a <b>suitably qualified person</b> capable of enabling safe passage of the <b>Black-breasted Button-quail</b> and the <b>Koala</b> under the road(s) constructed as a part of the action at the locations marked as 'Fauna Connectivity Structure' in the maps at <u>Attachments B1, B2, B3 and B4</u> .
Original dated 24/9/2019	<b>Fauna exclusion fencing</b> means a structure and tree and shrub free precinct, the design of which is certified by a <b>suitably qualified person</b> to be capable of preventing the <b>Black-breasted Button-quail</b> and the <b>Koala</b> from crossing the road(s), constructed as a part of the action, located where marked as 'Fauna Exclusion Fencing' in the maps at Attachments C1 and C2.
Original dated 24/9/2019	<b>Impact site</b> means the area marked as Contract 1 and Contract 2 in the map at <u>Attachment A</u> .
Original dated 24/9/2019	<b>Incident</b> means any event which has the potential to, or does, impact on <b>protected matter(s)</b> .
Original dated 24/9/2019	<b>Independent audit(s)</b> means an audit conducted by an independent and <b>suitably qualified person</b> as detailed in the <b>Department's Environment Protection and Biodiversity Conservation Act 1999 Independent Audit and Audit Report Guidelines</b> (2015).
Original dated 24/9/2019	<b>Koala</b> means the Koala (combined populations of Queensland, New South Wales and the Australian Capital Territory) ( <i>Phascolarctos cinereus</i> (combined populations of Qld, NSW and the ACT)) listed as a threatened species under the <b>EPBC Act</b> .
Original dated 24/9/2019	<b>Koala density</b> means the number and/or utilisation and distribution of <b>Koalas</b> per unit area as determined in field surveys over the entire <b>Koala offset areas</b> undertaken by a <b>suitably qualified person</b> using a scientifically robust and

Date of decision	Definitions attached to approval
	repeatable methodology over a timeframe that serves as a sound basis for comparison.
Original dated 24/9/2019	<b>Koala food tree</b> means a species of tree of genus <i>Angophera</i> , <i>Corymbia</i> , <i>Eucalyptus</i> , <i>Lophostemon</i> or <i>Melaleuca</i> , with a height of more than 4 metres or with a trunk circumference more than 31.5 centimetres at 1.3 metres above the ground, the leaves of which are known to be consumed by the <b>Koala</b> .
Original dated 24/9/2019	<b>Koala habitat</b> means any vegetation that contains Koala food trees and scores five or more using the habitat assessment tool in Table 4 of the <b>Koala referral guidelines</b> .
Variation dated 20/4/2020	<b>Koala offset areas</b> means the coloured areas of the <b>Offset Properties</b> designated as 'Offset Lots' in the maps at <a href="#">Attachments E1</a> , <a href="#">E2</a> and <a href="#">E3</a> .
Original dated 24/9/2019	<b>Koala referral guidelines</b> means <b>Department's EPBC Act referral guidelines for the vulnerable koala (combined populations of Queensland, New South Wales and the Australian Capital Territory)</b> , Commonwealth of Australia, 2014.
Original dated 24/9/2019	<b>Legally secure</b> means protect for conservation under a voluntary declaration under the <i>Vegetation Management Act 1999</i> (Qld) or as a nature refuge under the <i>Nature Conservation Act 1992</i> (Qld) or another enduring protection mechanism agreed to in writing by the <b>Department</b> .
Variation dated 20/4/2020	<b>Lowland rainforest</b> means vegetation that is determined by surveys undertaken by a <b>suitably qualified person</b> as conforming to the Lowland Rainforest of Subtropical Australia listed as a threatened ecological community under the <b>EPBC Act</b> and defined in accordance with the Threatened Species Scientific Committee (2011). <i>Commonwealth Listing Advice on Lowland Rainforest of Subtropical Australia</i> . Department of Sustainability, Environment, Water, Population and Communities, Canberra. This includes areas where threatened ecological communities are within 50m of cleared area.
Original dated 24/9/2019	<b>Minister</b> means the Australian Government Minister administering the <b>EPBC Act</b> including any delegate thereof.
Original dated 24/9/2019	<b>Monitoring data</b> means the data required to be recorded under the conditions of this approval.
Original dated 24/9/2019	<b>Offset attributes</b> means an '.xls' file capturing relevant attributes of the offset area, including: <ul style="list-style-type: none"> <li>i. EPBC Act reference number</li> <li>ii. Physical address of the offset area;</li> <li>iii. Coordinates of the boundary points in decimal degrees;</li> <li>iv. <b>EPBC Act</b> listed threatened species and communities that the offset compensates for;</li> <li>v. Any additional <b>protected matters</b> that are benefiting from the offset; and</li> <li>vi. Size of the offset in hectares.</li> </ul>
Variation dated 20/4/2020	<b>Offset Properties</b> means the following properties. The species being offset at each property is shown in parentheses. <ul style="list-style-type: none"> <li>• Lot 19SP299683 (Koala, <i>Phascolarctos cinereus</i>)</li> </ul>

Date of decision	Definitions attached to approval
	<ul style="list-style-type: none"> <li>• Lot 1MPH5670 (Koala, <i>Phascolarctos cinereus</i>)</li> <li>• Lot 1MPH23904 (Koala, <i>Phascolarctos cinereus</i>)</li> <li>• Lot 2SP302526 (Koala, <i>Phascolarctos cinereus</i>) (Black-breasted Button-quail, <i>Turnix melanogaster</i>)</li> <li>• Lot 4MPH23906 (Koala, <i>Phascolarctos cinereus</i>)</li> <li>• Lot 763MCH5342 (Koala, <i>Phascolarctos cinereus</i>)</li> <li>• Lot 102SP297908 (Koala, <i>Phascolarctos cinereus</i>) (Black-breasted Button-quail, <i>Turnix melanogaster</i>)</li> <li>• Lot 1MPH23906 (Koala, <i>Phascolarctos cinereus</i>)</li> <li>• Lot 3MPH23906 (Koala, <i>Phascolarctos cinereus</i>)</li> <li>• Lot 889CP864404 (Koala, <i>Phascolarctos cinereus</i>)</li> <li>• Lot 878MCH1061 (Koala, <i>Phascolarctos cinereus</i>)</li> <li>• Lot 2MPH14193 (Koala, <i>Phascolarctos cinereus</i>)</li> <li>• Lot 3SP302524 (Koala, <i>Phascolarctos cinereus</i>) (Black-breasted Button-quail, <i>Turnix melanogaster</i>)</li> </ul>
Original dated 24/9/2019	<b>Operation</b> means the first point at which public vehicles can traverse the roads constructed as a result of the action.
Original dated 24/9/2019	<b>Pest abundance</b> means the number, composition and distribution of non-native vertebrate animals known to predate on the <b>Black-breasted Button-quail</b> or the <b>Koala</b> , as determined in a field survey over the entire <b>Koala offset areas</b> and <b>Black-breasted Button-quail offset area</b> undertaken by a <b>suitably qualified person</b> using a scientifically robust and repeatable methodology over a timeframe that serves as a sound basis for comparison to data acquired to demonstrate achievement of the milestone required under condition 12.f.
Original dated 24/9/2019	<b>Pineapple zamia</b> means Pineapple zamia ( <i>Macrozamia pauli-guilielmi</i> ) listed as a threatened species under the <b>EPBC Act</b> .
Original dated 24/9/2019	<b>Plan(s)</b> means any of the documents required to be prepared, approved by the <b>Minister</b> , and/or implemented by the approval holder and published on the <b>website</b> in accordance with these conditions (includes action management plans and/or strategies).
Original dated 24/9/2019	<b>Protected matter(s)</b> means the following listed threatened species and ecological communities protected under a controlling provision in Part 3 of the <b>EPBC Act</b> for which this approval has effect: <ul style="list-style-type: none"> <li>• Koala (combined populations of Queensland, New South Wales and the Australian Capital Territory) (<i>Phascolarctos cinereus</i> (combined populations of Qld, NSW and the ACT));</li> <li>• Black-breasted Button-quail (<i>Turnix melanogaster</i>);</li> <li>• Pineapple zamia (<i>Macrozamia pauli-guilielmi</i>);</li> <li>• Lowland Rainforest of Subtropical Australia.</li> </ul>
Original dated 24/9/2019	<b>Quality</b> means a measure, as determined by a <b>suitably qualified person</b> , of site condition, site context and species individual or population persistence or species stocking rate calculated in accordance with the requirements of the <b>EPBC Act offsets assessment guide</b> or other biocondition assessment process agreed by the <b>Department</b> . The assessment process must use a scientifically robust and repeatable methodology over a timeframe that serves as

Date of decision	Definitions attached to approval
	a sound basis for comparison to baseline data acquired to demonstrate achievement of relevant milestones required in conditions 3, 12 and 13.
Original dated 24/9/2019	<b>Riparian area</b> means the areas of <b>Lowland rainforest</b> along Six Mile Creek as identified in the map at <u>Attachment G</u> .
Original dated 24/9/2019	<b>Seedling Pineapple zamia</b> means <b>Pineapple zamia</b> plants that are not <b>adult Pineapple zamia</b> plants.
Original dated 24/9/2019	<b>Sensitive ecological data</b> means data as defined in the <b>Department's Sensitive Ecological Data – Access and Management Policy V1.0</b> . (2016).
Original dated 24/9/2019	<b>Shapefile(s)</b> means an ESRI shapefile format used for storing location and attributes information of geographic features. <b>Shapefiles</b> must contain '.shp', '.shx', '.dbf' files and a '.prj' file that specifies the projection/geographic coordinate system used. <b>Shapefiles</b> should also include an '.xml' metadata file that describes the <b>shapefile</b> for discovery and identification purposes.
Original dated 24/9/2019	<b>Suitably qualified person</b> means a person who has professional qualifications, training, skills and at least three (3) years of relevant experience specific to locating, identifying and conserving the <b>protected matters</b> that are subject to this approval and can give authoritative independent assessment, advice and analysis specific to the <b>protected matters</b> using the relevant protocols, standards, methods and/or literature. If the person does not have appropriate professional qualifications, the person must have at least five (5) years of relevant experience specific to locating, identifying and conserving the <b>protected matters</b> that are subject to this approval and can give authoritative independent assessment, advice and analysis specific to the <b>protected matters</b> using the relevant protocols, standards, methods and/or literature.
Original dated 24/9/2019	<b>Threshold criteria</b> means the key diagnostic characteristics and condition thresholds used to define <b>Lowland rainforest</b> as described in the Threatened Species Scientific Committee (2011). <i>Commonwealth Listing Advice on Lowland Rainforest of Subtropical Australia</i> . Department of Sustainability, Environment, Water, Population and Communities, Canberra.
Original dated 24/9/2019	<b>Translocation site</b> means the area adjacent to Curra Creek South Branch as shown as 'MPG Translocation Site' in the map at <u>Attachment D</u> .
Original dated 24/9/2019	<b>Viable Pineapple zamia plant</b> means an <b>adult Pineapple zamia</b> plant or <b>seedling Pineapple zamia</b> plant deemed by a <b>suitably qualified person</b> to be suitable for translocation from the <b>impact site</b> to the <b>translocation site</b> .
Original dated 24/9/2019	<b>Website</b> means a set of related web pages located under a single domain name attributed to the approval holder and available to the public.
Original dated 24/9/2019	<b>Weed infestation</b> means the abundance, composition and distribution of non-native flora species known to restrict the movement or adversely impact on available habitat of the <b>Black-breasted Button-quail</b> and/or the <b>Koala</b> across the landscape, as determined by a field survey over the entire <b>Koala offset areas</b> and <b>Black-breasted Button-quail offset area</b> undertaken by a <b>suitably qualified person</b> using a scientifically robust and repeatable methodology over a timeframe that serves as a sound basis for comparison to data acquired to demonstrate achievement of the milestones required under condition 12.c.

Date of decision	<b>ATTACHMENTS</b>
Original dated 24/9/2019	<b>Attachment A — map of impact site</b>



LEGEND

Town	Secondary Road	Project Area	Protected Areas
Watercourse	Local Connector Road	Contract 1	
Railway	Street/Local Road	Contract 2	
Highway		Survey Area	

Based on an aerial data provided by the State of QLD (2016). 2016 is considered the date pertaining to use of the data you acknowledge and agree that the State gives no warranty in relation to the data (including accuracy, reliability, completeness, currency or suitability) and accepts no liability (including without limitation, liability in negligence) for any loss, damage or costs (including consequential damage) resulting in any use of the data. Data must not be used for marketing or be used in breach of the contract terms.



Department of Transport and Main Roads  
Bruce Highway – Cooroy to Curra  
(Section D: Woodlum to Curra)

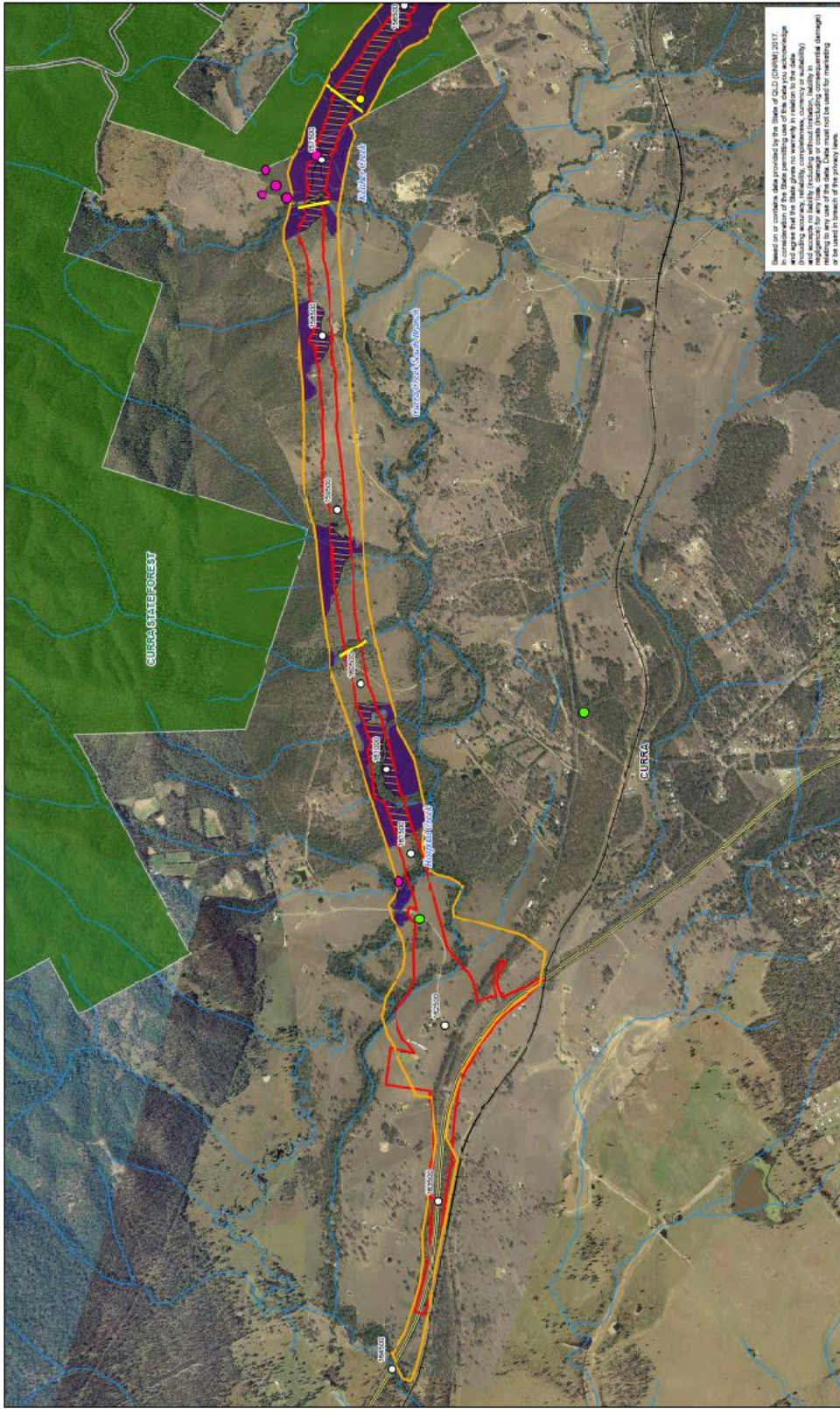
Job Number: 41-25914  
Revision: 0  
Date: 24 Mar 2017

Locality Plan

Appendix A

© 2017. While every care has been taken to prepare this map, GHD and DATA QUEST/DMR make no representations or warranties, explicit or implied, completeness or suitability for any particular purpose and accept no liability and responsibility of any kind (including in contract, tort or otherwise) for any errors, omissions, damages or other liabilities (including professional fees and consequential damages) which may be incurred by any party as a result of the map being inaccurate, incomplete or available in any way and for any reason. Data source: GA Town (2014); TMR; State of Queensland (2016); SMISS; Railways; Queensland (2014); Road (2016); GHD-Proprietary Data (2017). Created by: G2

Attachment B1 — fauna connectivity structures

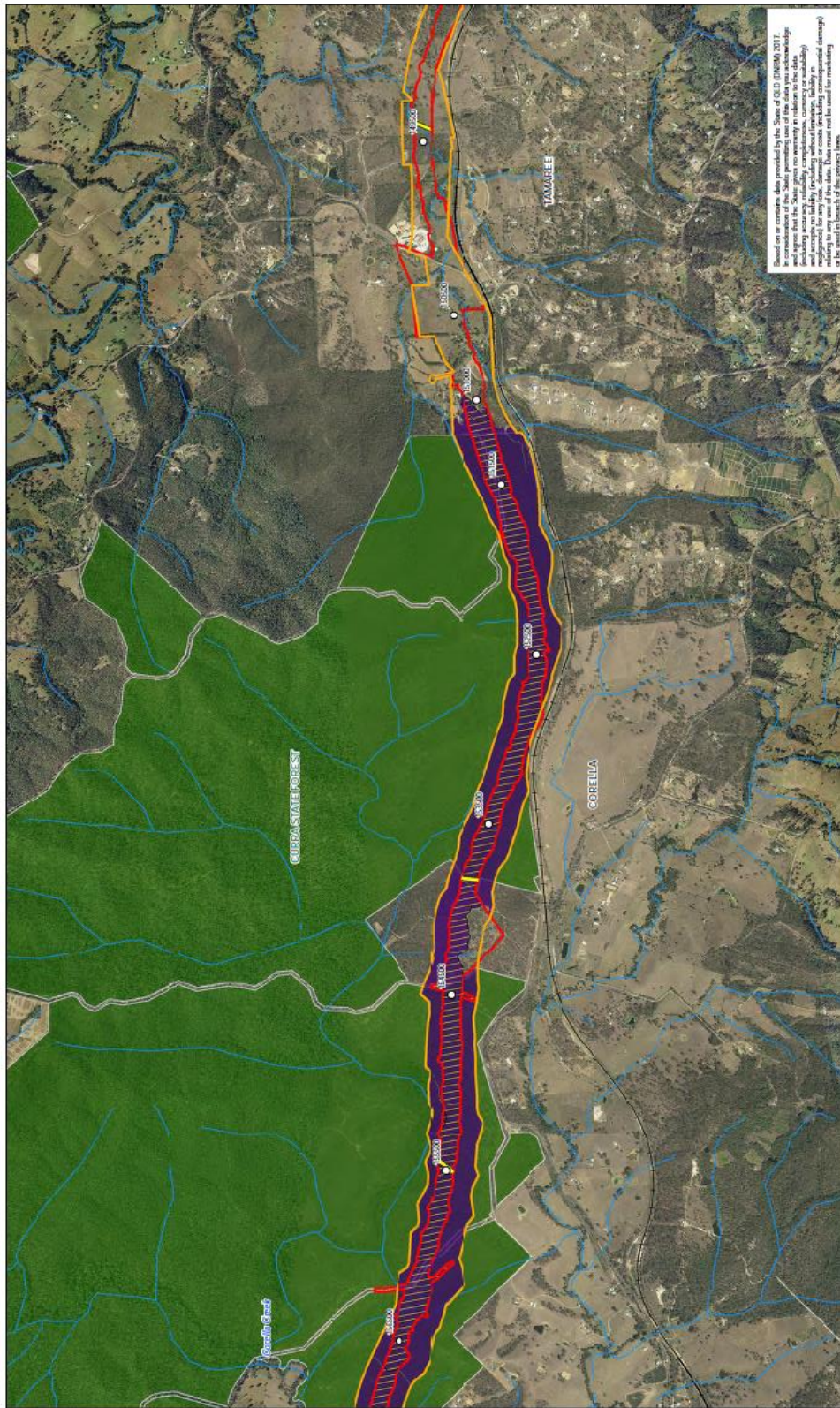



Department of Transport and Main Roads  
 Bruce Highway Corridor to Curra  
 (Section D, Woodrum to Curra)  
 Job Number 41-29914  
 Revision 0  
 Date 11 Aug 2020  
**Figure 3**  
**Sheet 1 of 4**















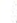



6 PROVISION PARKING BIRDCYS QLD-4575-AUR003  
 T 617 5413 8100 F 617 5413 8199 E 0801ma@ghd.com W www.ghd.com

6 PROVISION PARKING BIRDCYS QLD-4575-AUR003  
 T 617 5413 8100 F 617 5413 8199 E 0801ma@ghd.com W www.ghd.com

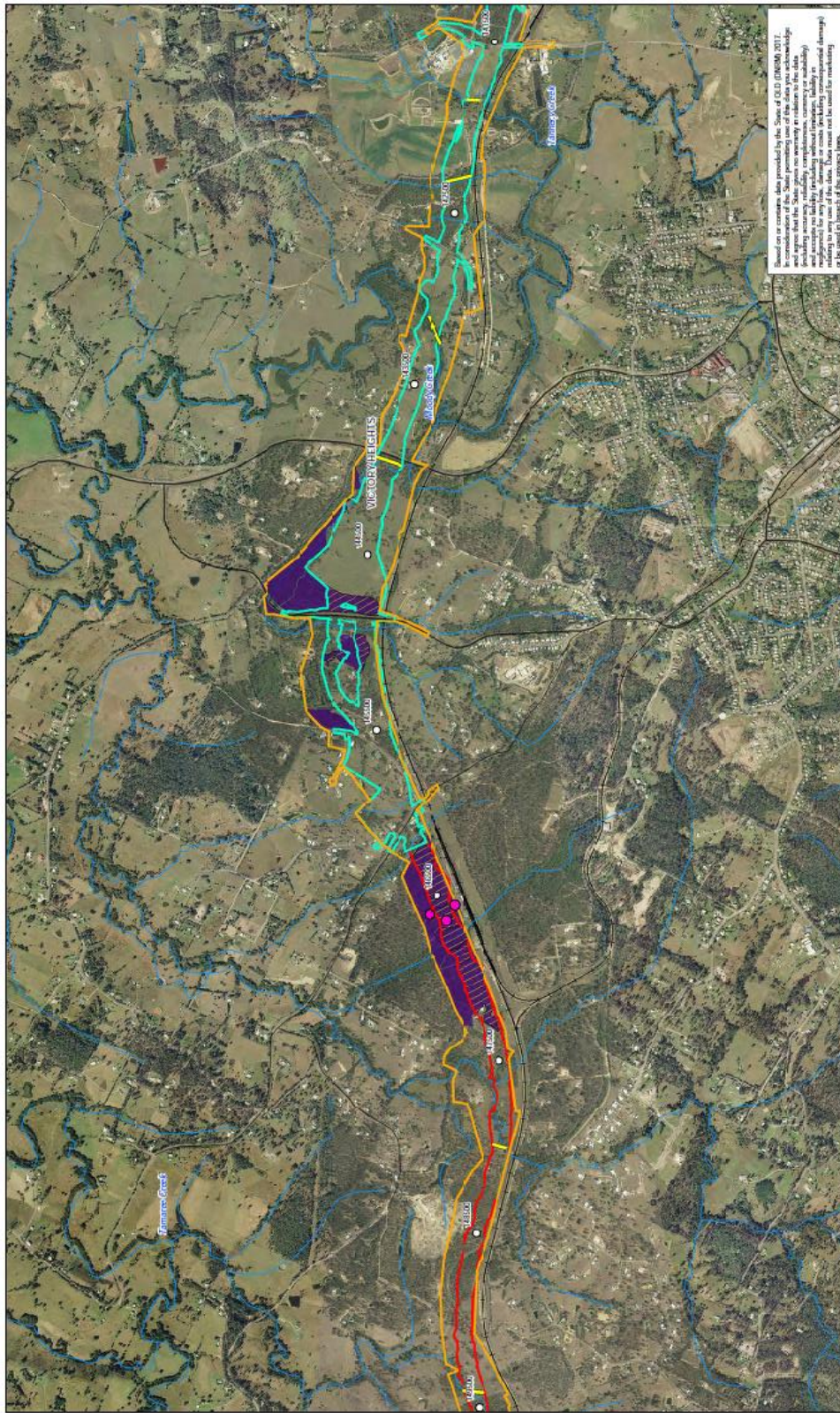


		Department of Transport and Main Roads Bruce Highway Corridor to Curra (Section D: Woodlum to Curra)	Job Number 41-29914 Revision 0 Date 11 Aug 2020
<p> <i>E. Innovation Parkway (itp)yo, QLD 4675, Australia T: 61 7 5413 8100 F: 61 7 5413 8100 E: itp@innovationhigh.com W: www.itp.com</i> </p>		Koala records and habitat	Figure 3 Sheet 2 of 4

<b>LEGEND</b>  North Arrow	 Town  1km Changeover  Railway  Watercourse	 Fauna Connectivity Structure  Survey Area  Protected Area	 Contract 1  Contract 2	 ERM/USCOTN Threatened Fauna Records  Koala (Record)  Koala (Scratch&Scop)  Koala Evidence Present (USC)	 Koala Habitat Critical to Survival  Habitat Critical to the Survival of the Koals
---	--	---	--	--	---





Based on or contains data provided by the State of Queensland (2017) in consideration of the State permitting use of these data you acknowledge that the State does not warrant the accuracy, reliability, completeness or suitability and accepts no liability (including without limitation, liability in negligence) arising in any use of this data. These records are not to be used for marketing or to be used in breach of the privacy laws.

Department of Transport and Main Roads  
Bruce Highway Corridor to Curra  
(Section D: Woodnum to Curra)

Job Number 41-29914  
Revision 0  
Date 11 Aug 2020

Figure 3  
Sheet 3 of 4

Koala records and habitat  
E: 84601msa@ghd.com W: www.ghd.com

GH D

6 Innovation Parkway Brisbane QLD 4015 Australia T: 61 7 5413 8100 F: 61 7 5413 8199 E: 84601msa@ghd.com W: www.ghd.com

**LEGEND**

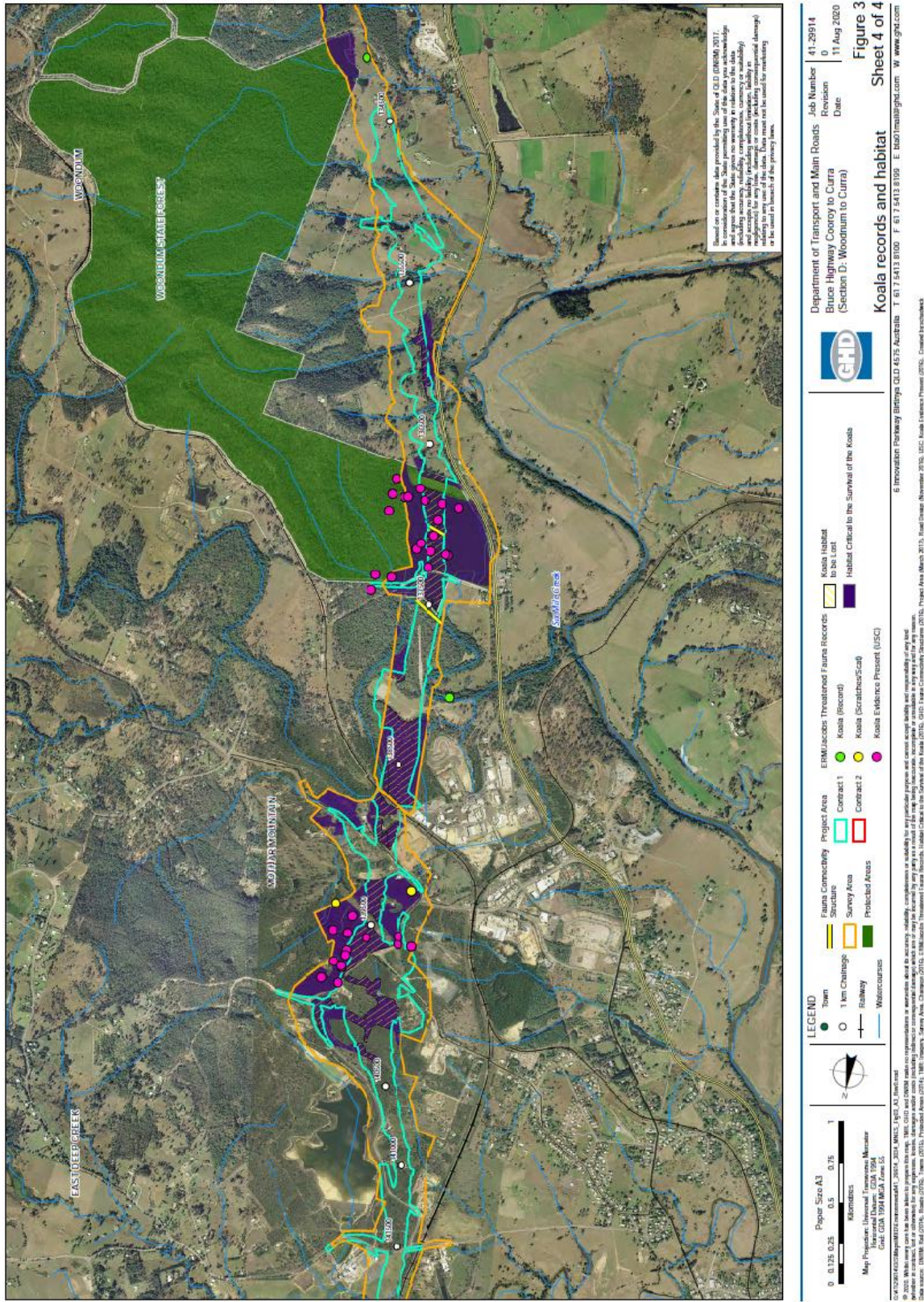
- Town
- 1 km Change
- Roadway
- Watercourse
- Fauna Connectivity Structure
- Survey Area
- Project Area
- Contract 1
- Contract 2
- Prohibited Areas
- ERM/Jacobs Threatened Fauna Records
- Koala Record
- Koala (Scratchpad)
- Koala Evidence Present (USC)
- Koala Habitat to be Lost
- Habitat Critical to the Survival of the Koals

Page Size A3  
0 0.125 0.25 0.5 1  
Kilometres

Map Projection: Universal Transverse Mercator  
Grid: GDA 1994 MGA Zone 55

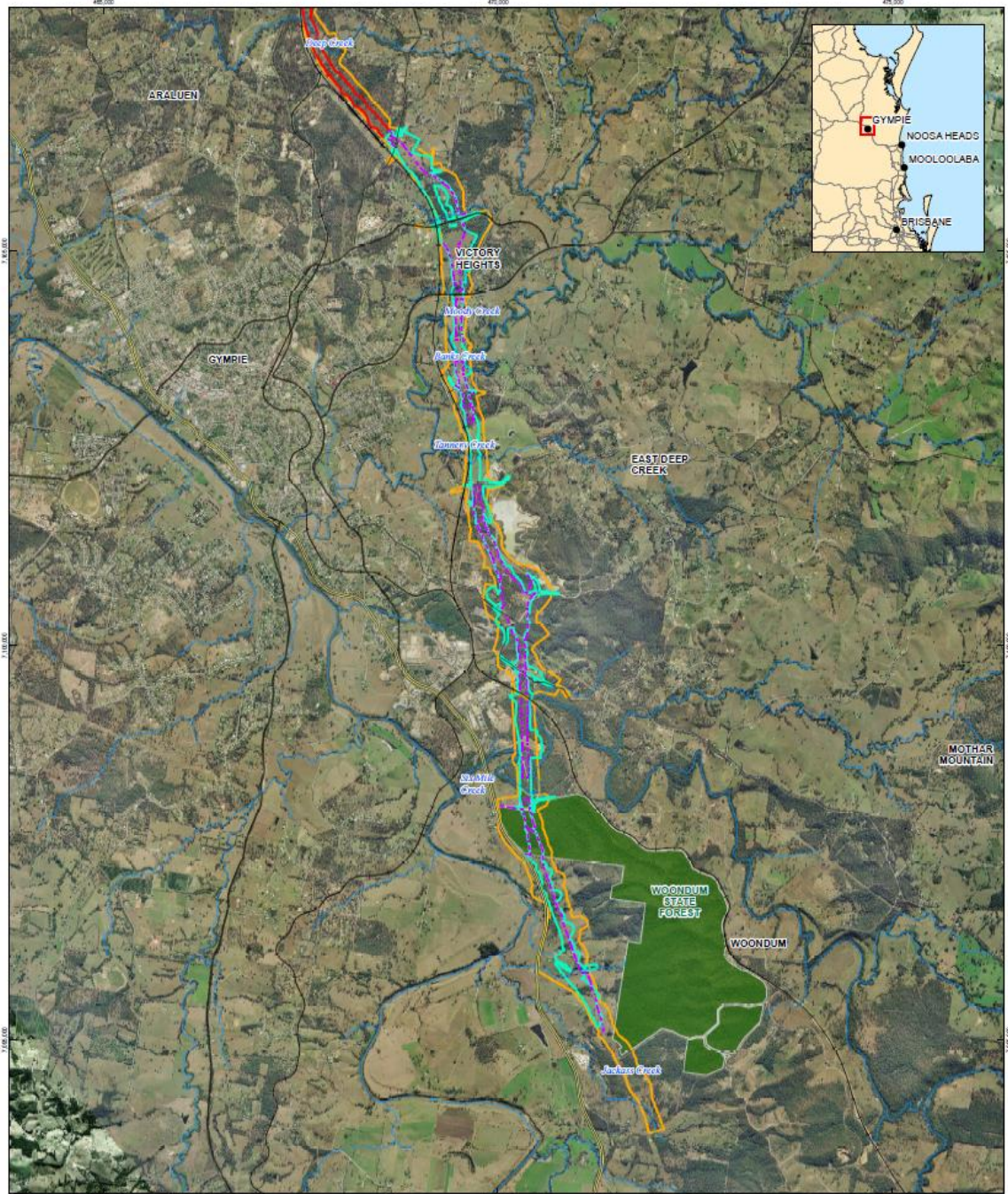
© 2020. While every care has been taken to prepare this map, MTR, GH D and ERM/Jacobs make no representations or warranties about the accuracy, reliability, completeness or suitability for any particular purpose and cannot accept liability (including without limitation, liability in negligence) arising in any use of this map. These records are not to be used for marketing or to be used in breach of the privacy laws.

State sources: DMNR, Road (2019), State (2017), Town (2017), Protected Areas (2014), MTR, Property, Survey Area, Change (2015), ERM/Jacobs Threatened Fauna Records, Habitat Critical to the Survival of the Koals (2015), GH D, ERM/Jacobs Scratchpad (2015), Project Area (March 2015), Road Change (November 2015), USC, Koala Evidence Present (2015), Created by roadwork



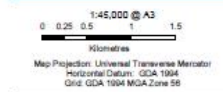
Original dated 24/9/2019

### Attachment C1 — fauna exclusion fencing



- LEGEND**
- Watercourse
  - Local Connector Road
  - Contract 2
  - Railway
  - Street/Local Road
  - Survey Area
  - Highway
  - Project Area
  - Protected Areas
  - Secondary Road
  - Contract 1
  - Fauna Exclusion Fencing

Based on or contains data provided by the State of QLD (DNRMP) 2018. In consideration of the State permitting use of this data you acknowledge and agree that the State gives no warranty in relation to the data (including accuracy, reliability, completeness, currency or suitability) and accepts no liability (including without limitation, liability in negligence) for any loss, damage or costs (including consequential damage) resulting in any use of the data. Data must not be used for marketing, or be used in breach of the privacy laws.



Department of Transport and Main Roads  
Bruce Highway – Cooroy to Curra  
(Section D: Woondum to Curra)

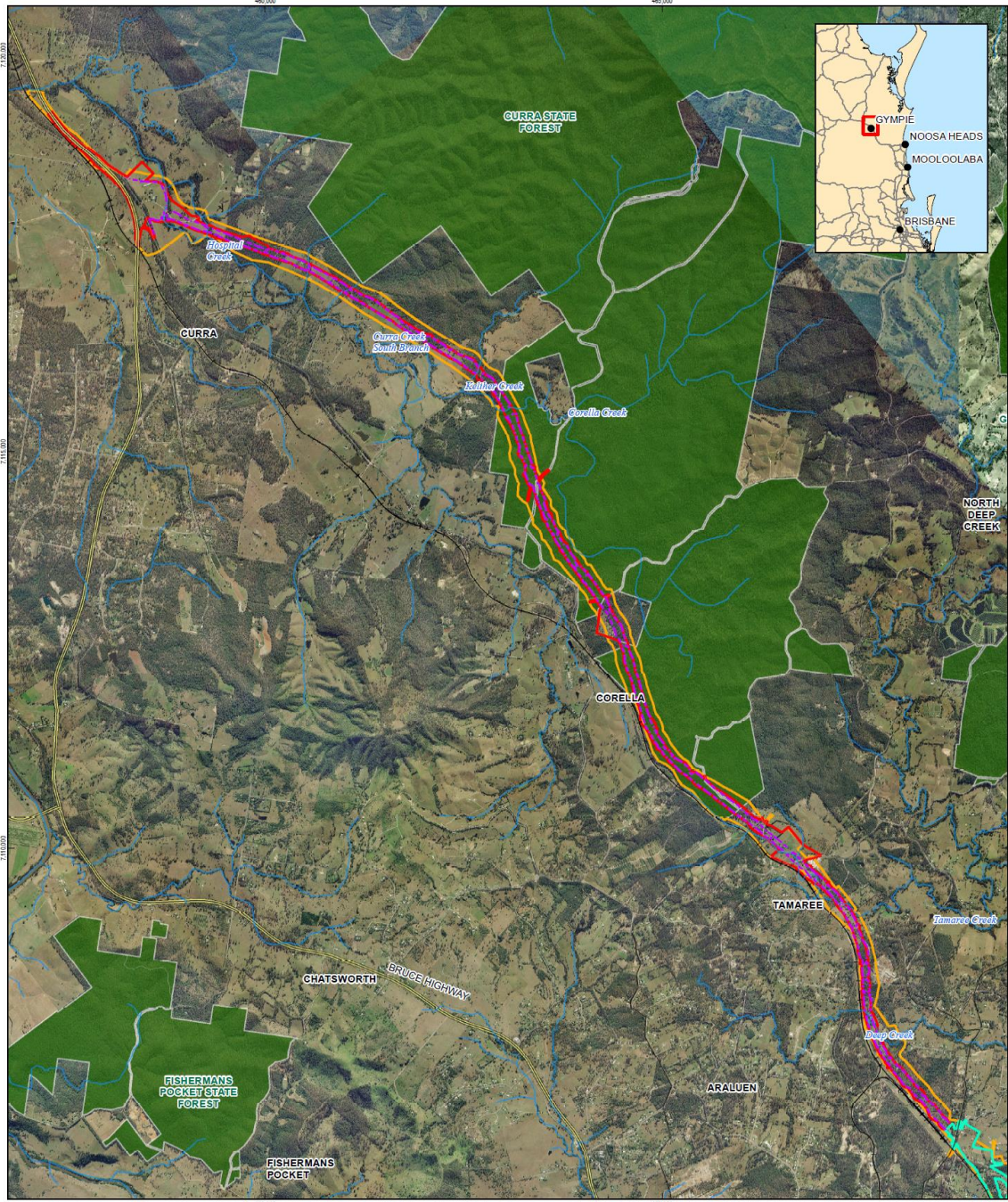
Job Number 41-29914  
Revision 0  
Date 21 Feb 2019

#### Contract 1 - Fauna Exclusion Fencing Figure 1-1

© 2019. Whilst every care has been taken to prepare this map, GHD and DATA CUSTODIAN make no representations or warranties about its accuracy, reliability, completeness or suitability for any particular purpose and cannot accept liability and responsibility of any kind whether in contract, tort or otherwise for any expenses, losses, damages and/or costs (including indirect or consequential damage, which are or may be incurred by any party as a result of the map) being inaccurate, incomplete or unusable in any way and for any reason.  
Data source: OA: Town (2014); TMR: Aerial Imagery (2015); Survey Area (2016); DNRMP: Railway, Watercourse (2014); Road (2018); GHD: Project Area (March 2017); Fauna Fence (2018). Created by: JN

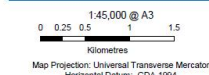
Original dated 24/9/2019

### Attachment C2 —fauna exclusion fencing



LEGEND			
	Watercourse		Contract 2
	Local Connector Road		Survey Area
	Street/Local Road		Protected Areas
	Highway		Contract 1
	Secondary Road		Fauna Exclusion Fencing

Based on or contains data provided by the State of QLD (DNRM) 2019. In consideration of the State permitting use of this data you acknowledge and agree that the State gives no warranty in relation to the data (including accuracy, reliability, completeness, currency or suitability) and accepts no liability (including without limitation, liability in negligence) for any loss, damage or costs (including consequential damage) relating to any use of the data. Data must not be used for marketing or be used in breach of the privacy laws.



Department of Transport and Main Roads  
Bruce Highway – Cooroy to Curra  
(Section D: Woondum to Curra)

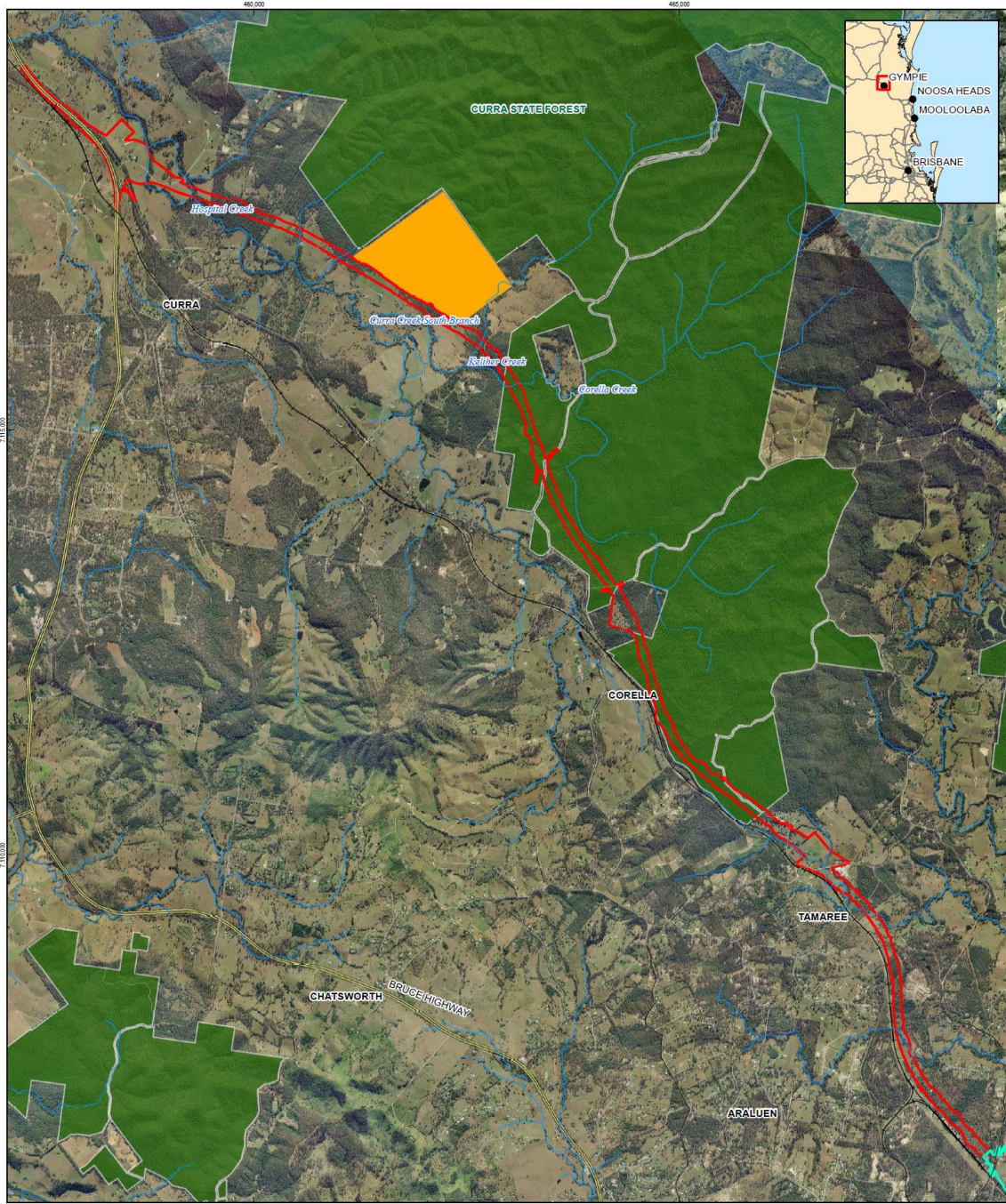
Job Number 41-29914  
Revision 0  
Date 20 Feb 2019

### Contract 2 - Fauna Exclusion Fencing Figure 1-2

© 2019. Whilst every care has been taken to prepare this map, GHD (and DATA CUSTODIAN) make no representations or warranties about its accuracy, reliability, completeness or suitability for any particular purpose and cannot accept liability and responsibility of any kind (whether in contract, tort or otherwise) for any losses, damages and/or costs (including indirect or consequential damage) which are or may be incurred by any party as a result of the map being inaccurate, incomplete or unsuitable in any way and for any reason.  
Data source: DA: Tm (2014); TM: Aerial Imagery (2016); Survey Area (2016); DNRM: Railway, Watercourse (2014); Road (2016); GHD: Project Area (March 2017); Fauna Fence (2019). Created by: VN  
6 Innovation Parkway Birtinya QLD 4575 Australia T 61 7 5413 8100 F 61 7 5413 8199 E bta01mail@ghd.com W www.ghd.com

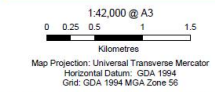
Original dated 24/9/2019

### Attachment D — map of translocation site



- LEGEND**
- Town
  - Watercourse
  - Railway
  - Highway
  - Secondary Road
  - Local Connector Road
  - Street/Local Road
  - Project Area
  - Contract 1
  - Contract 2
  - Protected Areas
  - MPG Translocation Site
  - MPG - *Macrozamia paull-guilelmi*

Based on or contains data provided by the State of QLD (DNRM) 2018. In consideration of the State permitting use of this data you acknowledge and agree that the State gives no warranty in relation to the data (including accuracy, reliability, completeness, currency or suitability) and accepts no liability (including without limitation, liability in negligence) for any loss, damage or costs (including consequential damage) resulting from any use of the data. Data must not be used for marketing or be used in breach of the privacy laws.



Department of Transport and Main Roads  
Bruce Highway – Cooroy to Curra  
(Section D: Woondum to Curra)

Job Number 41-29914  
Revision 0  
Date 10 Aug 2020

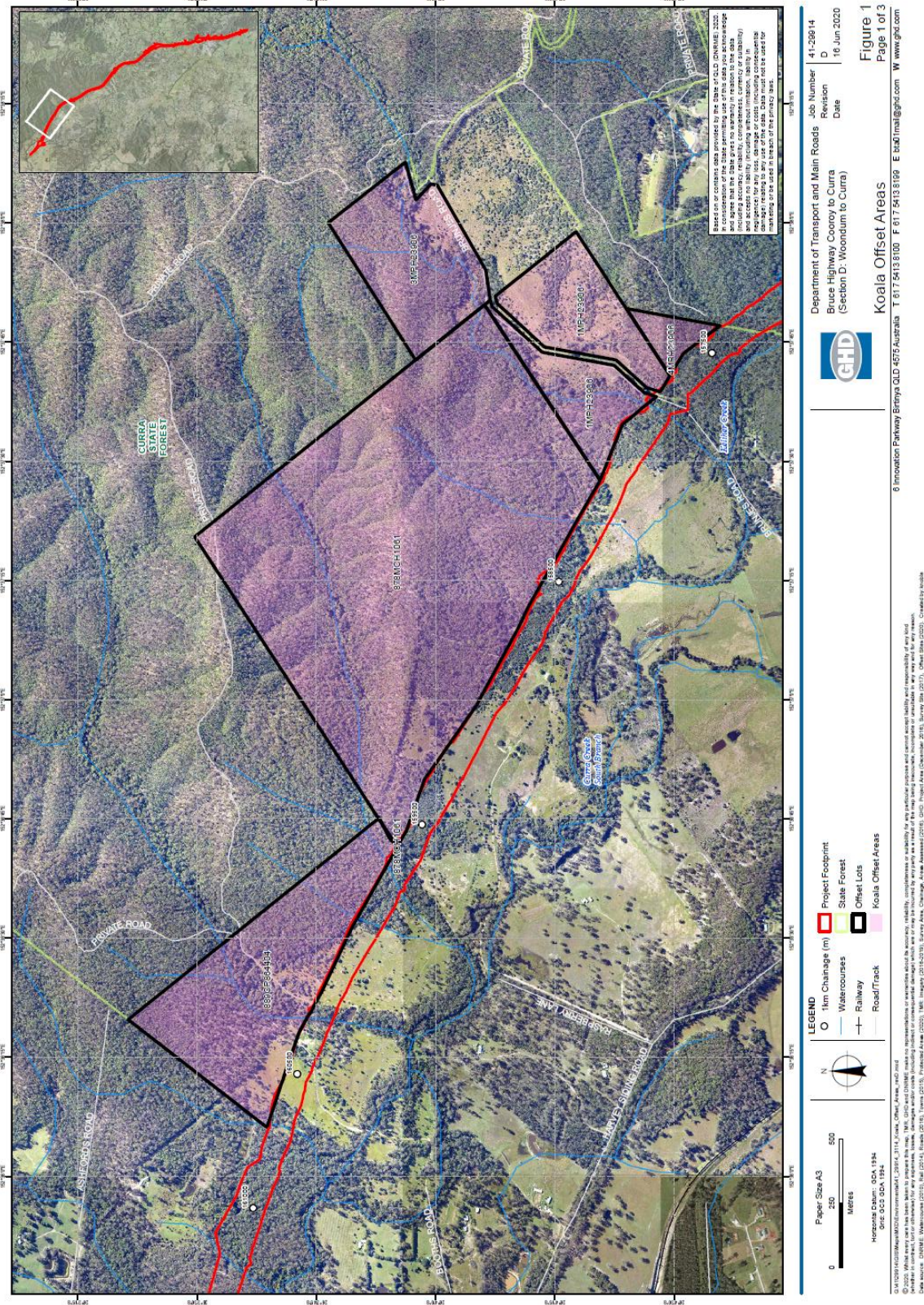
Locality Plan

Figure 1

© 2020. Whilst every care has been taken to prepare this map, GHD (and DNRM) make no representations or warranties about its accuracy, reliability, completeness or suitability for any particular purpose and cannot accept liability and responsibility of any kind (whether in contract, tort or otherwise) for any expenses, losses, damages and/or costs (including indirect or consequential damage) which are or may be incurred by any party as a result of the map being inaccurate, incomplete or unusable in any way and for any reason. Data source: GA, Town (2014), TMR, Aerial Imagery (2016), Survey Area (2016), DNRM, Railway, Watercourse (2014), Road (2016), GHD, Suitable Offset Sites (2016), Project Area (December 2016). Created by: SC

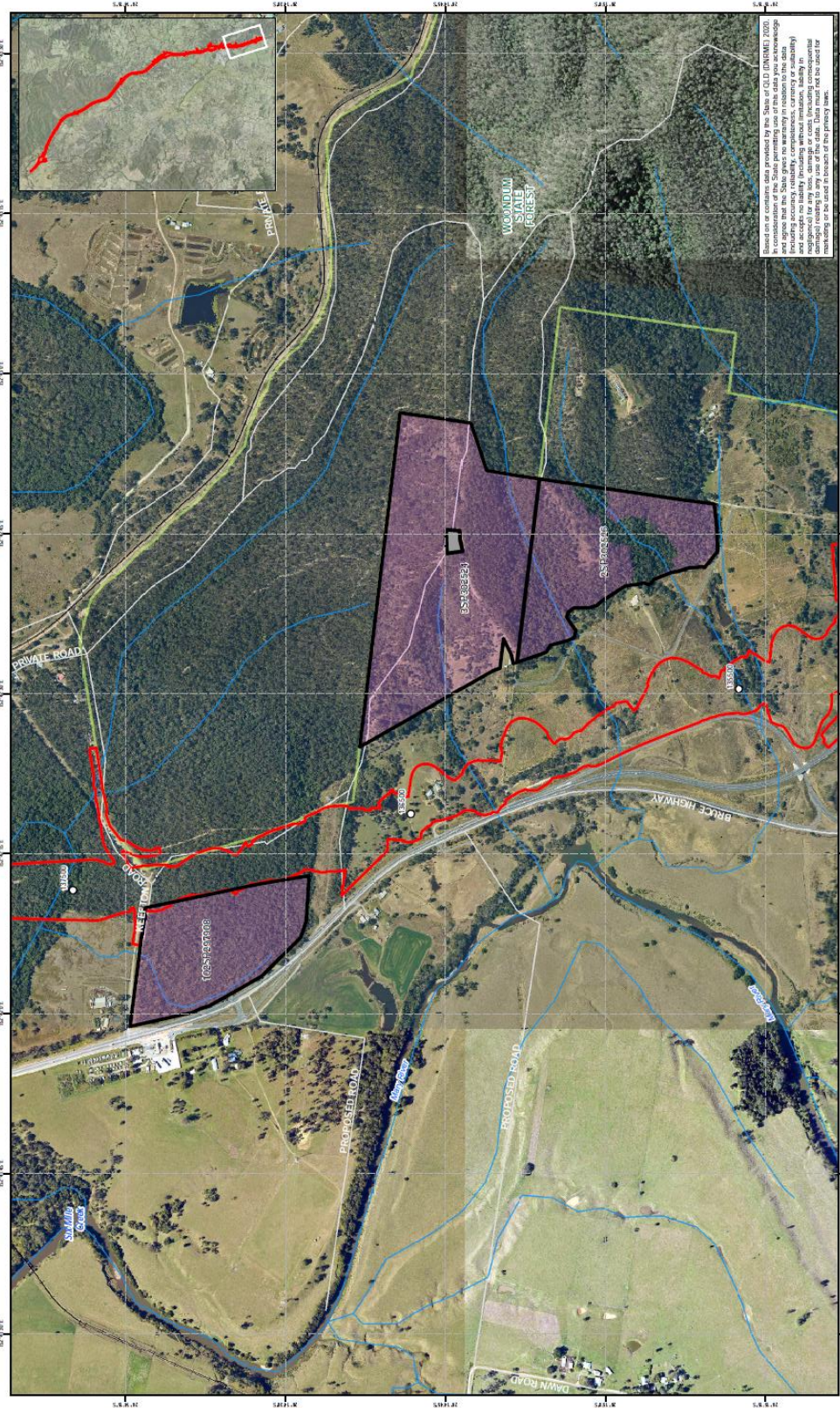
Variation dated 20/4/2020

### Attachment E1 —Koala offset areas



Variation  
dated  
20/4/2020

**Attachment E2 —Koala offset areas**



Department of Transport and Main Roads  
 Bruce Highway Corridor to Curra  
 (Section D: Woodmundy to Curra)

**GHD**

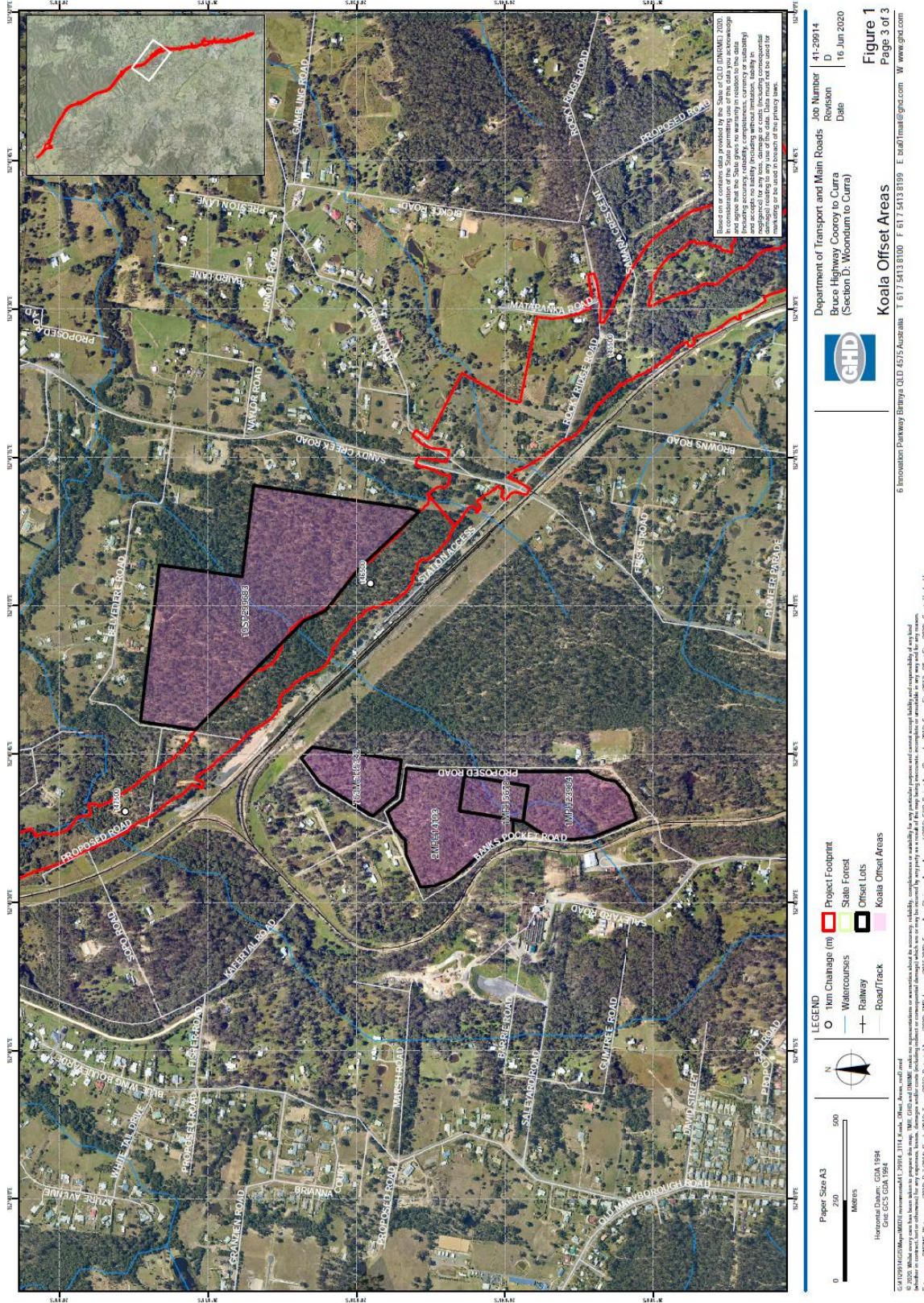
Job Number 41-20914  
 Revision D  
 Date 16 Jun 2020

**Figure 1**  
 Page 2 of 3

Koala Offset Areas  
 6 Innovation Parkway Brisbane QLD 4075 Australia T 61 7 5413 8100 F 61 7 5413 8199 E info@ghd.com W www.ghd.com

Variation dated 20/4/2020

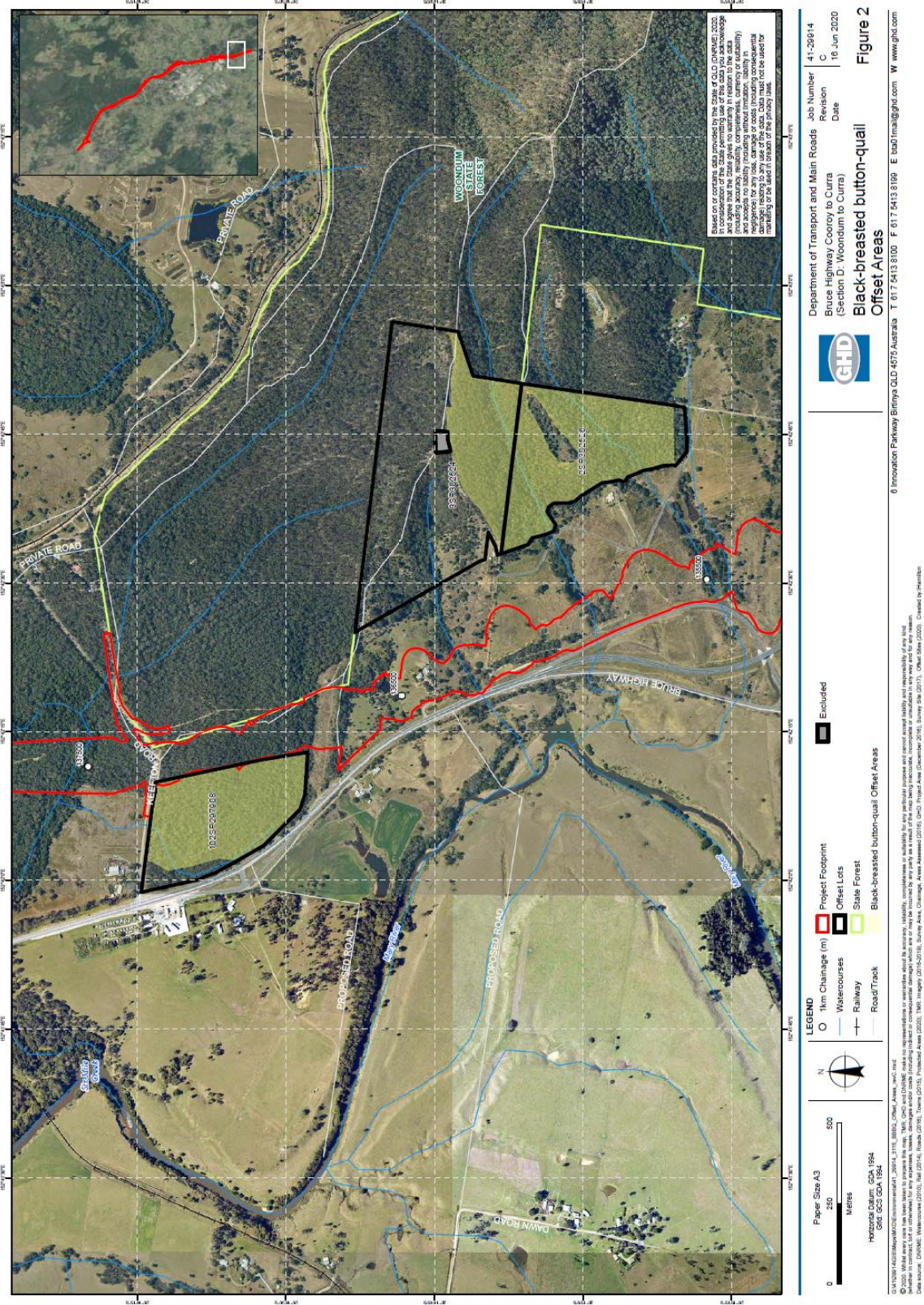
Attachment E3 —Koala offset areas





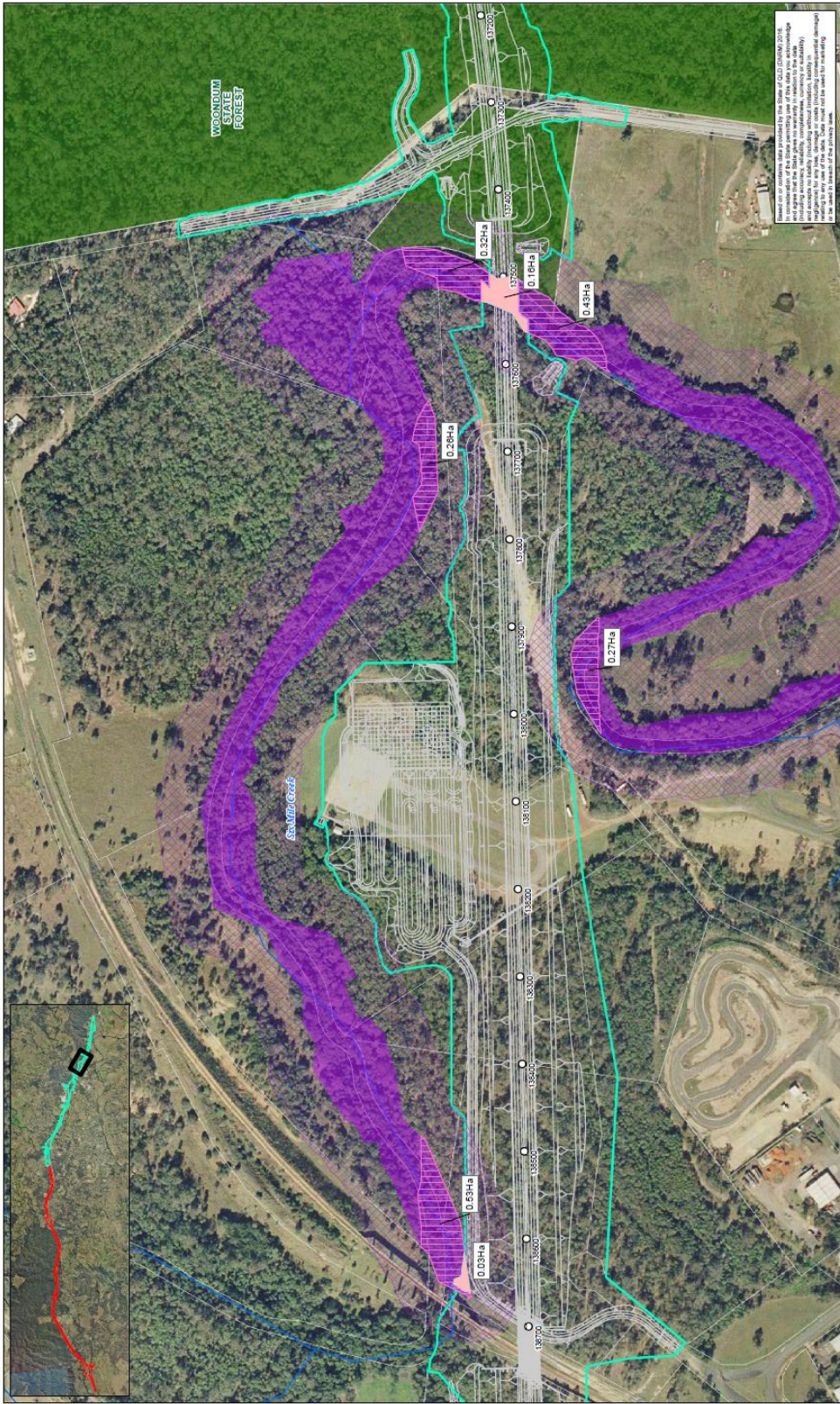
Variation dated 20/4/2020

### Attachment F – Black-breasted Button-quail offset areas



Variation dated 20/4/2020

### Attachment G –Six Mile Creek Lowland rainforest riparian area



**LEGEND**

- Highway
- Local Connector Road
- Street/Local Road
- Watercourse
- Cadastre Boundary
- Protected Areas
- Project Area
- Contract 1
- Contract 2
- EPBC Act Impact Areas
- TEC (GHD 2016)
- TEC Direct Impact
- TEC Indirect Impact
- TEC 50 m Buffer

**Scale:** 0, 25, 50, 100 Meters

**Map Projection:** Universal Transverse Mercator  
**CRS:** GDA 1984 MGA54  
**CRS Code:** EPSG:54036

**Job Number:** 41-28914  
**Revision:** E  
**Date:** 30 Mar 2020

**Department of Transport and Main Roads**  
 Bruce Highway Corridor to Curra  
 (Section D: Woondum to Curra)  
**Lowland Rainforest of Subtropical Australia TEC - Impacts**

**GHD**

6 Innovation Parkway, Brisbane QLD 4075 Australia T 617 543 8100 F 617 543 8199 E badi.mai@ghd.com W www.ghd.com

**Figure 1**