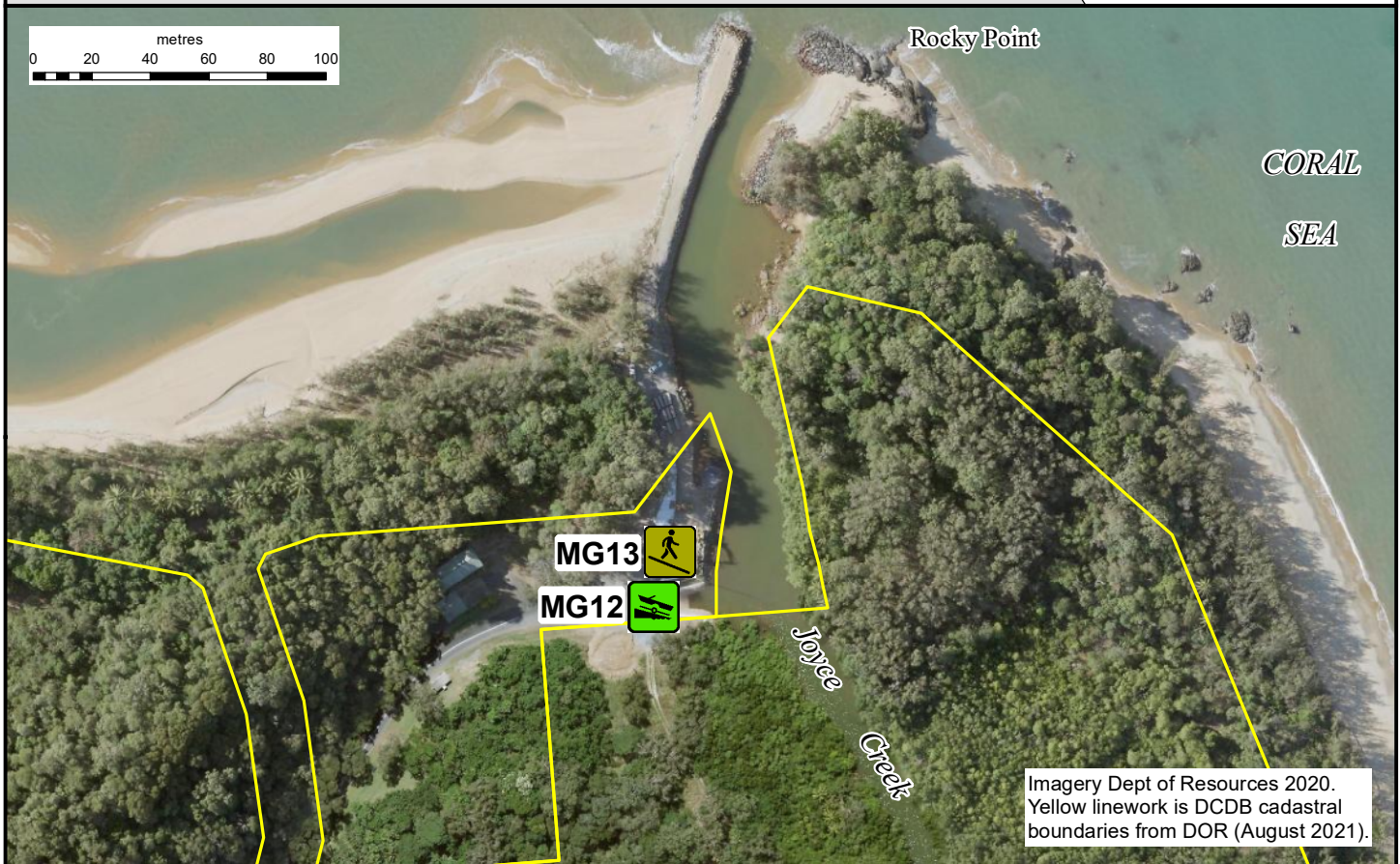
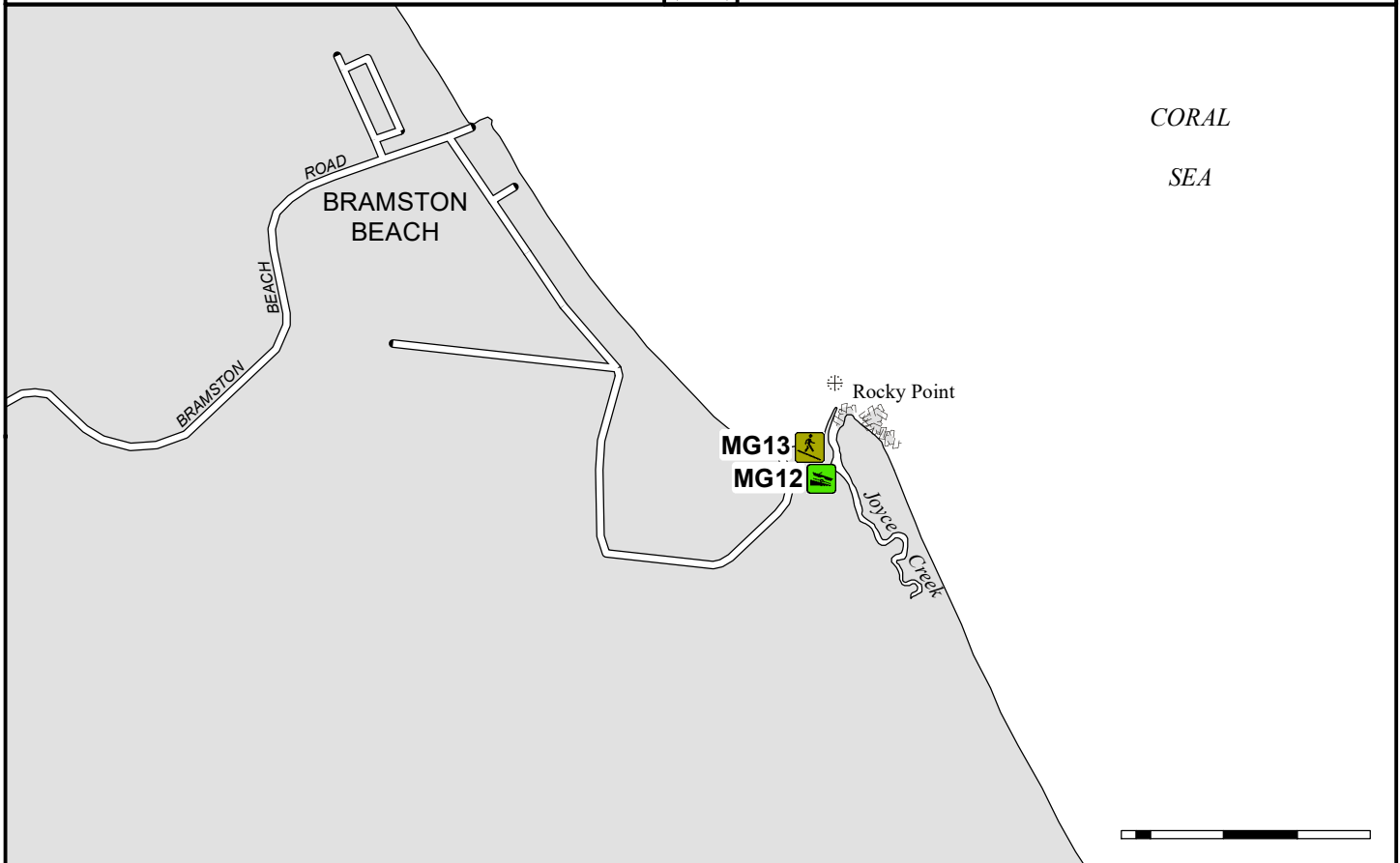




Public boat ramp with fixed sloping walkway



BRAMSTON BEACH (Joyce Creek)



© The State of Queensland
(Transport and Main Roads) 2021



Managing Authority

Facility code



Prepared 21 October 2021
Maritime Safety Queensland

**Cairns
Regional Council**

MG12 MG13

L-5-158-1A