

BUNDABERG AREA NORTH SECTION SOILS

SCALE 1 : 50 000

GRID VALUES ARE SHOWN IN FULL AT THE SOUTH-WEST CORNER OF THE MAP.
GREY NUMBERED GRID LINES ARE 1000 METRE INTERVALS OF THE AUSTRALIAN MAP GRID, ZONE 56, 4044.
UNIVERSAL TRANSVERSE MERCATOR PROJECTION

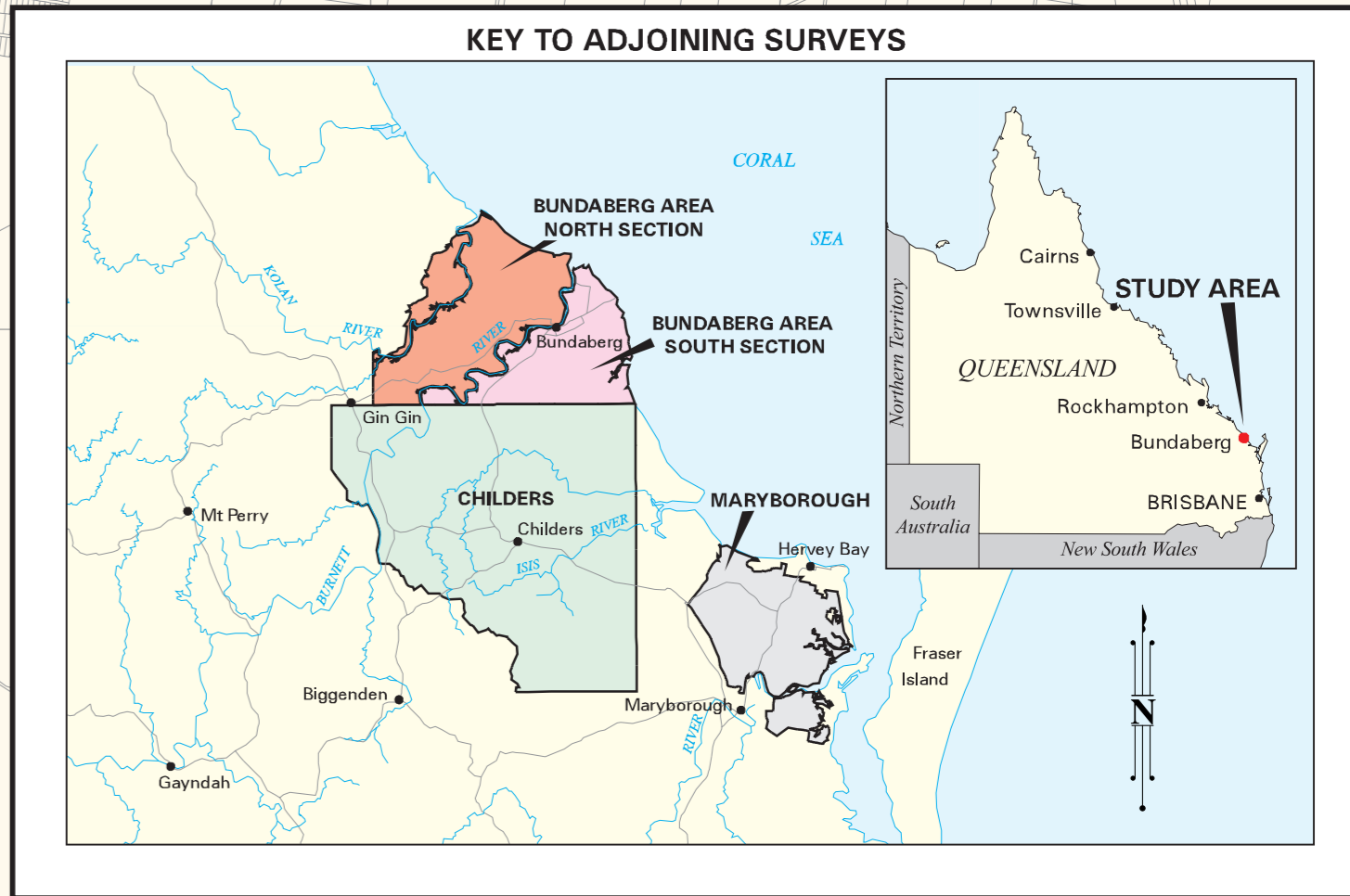
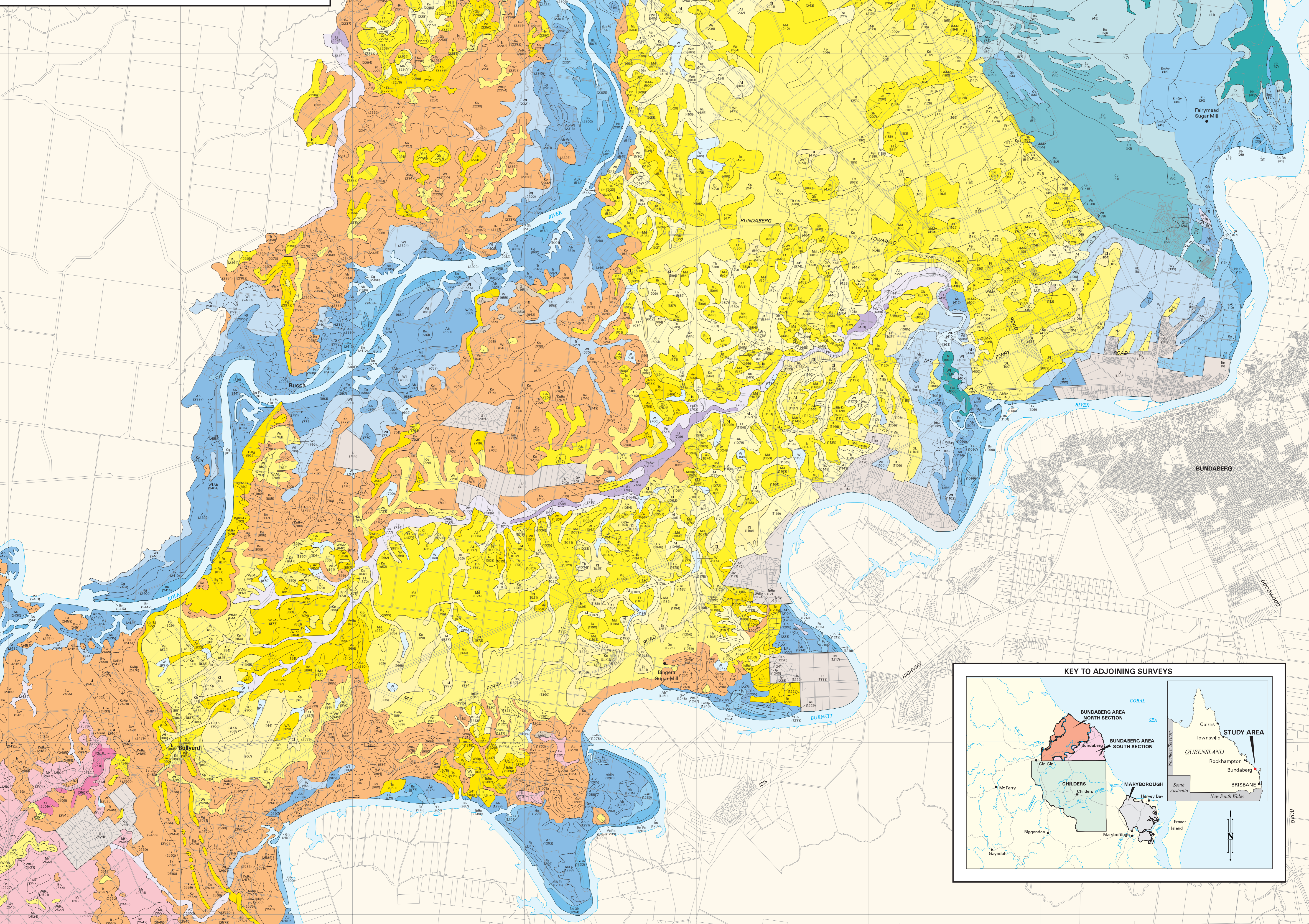
INTENSITY STATEMENT
This is a medium intensity survey. It is based on aerial photography interpretation and ground observations of the order of one observation to an area of 15 to 40 hectares.

ACCURACY STATEMENT
Due to varying sources of data sets, spatial locations may not coincide when overlaid.

DISCLAIMER
This map is compiled from information supplied to the Department of Natural Resources. While all care is taken in the preparation of this map, neither the Department nor its officers or staff accept any responsibility for any loss or damage which may result from the use of this map, or from any use of the information contained herein.

SURVEYED BY: Zund, T.E. Donnellan, R.R. Wilson and S.A. Irvine, Department of Natural Resources, Bundaberg.
CARTOGRAPHY BY: D.M. Brough, Department of Natural Resources, Bundaberg.
BASE MAP - Compiled from the Digital Cadastral Data Base, supplied by the Department of Natural Resources, Brisbane.

© The State of Queensland, Department of Natural Resources, 1988.



REFERENCE

Mapping Unit Code	Major Attributes of Dominant Soil	Australian Soil Classification	Great Soil Group	Principal Profile Form	Mapping Unit Code	Major Attributes of Dominant Soil	Australian Soil Classification	Great Soil Group	Principal Profile Form	Mapping Unit Code	Major Attributes of Dominant Soil	Australian Soil Classification	Great Soil Group	Principal Profile Form	Mapping Unit Code	Major Attributes of Dominant Soil	Australian Soil Classification	Great Soil Group	Principal Profile Form
SOILS OF THE ALLUVIAL PLAINS OF THE BURNETT AND KOLAN RIVERS																			
RECENT ALLUVIA																			
Leaves and scabbles																			
Bb	Bombilla	0.2 to 0.3m black to brown sandy loam A horizon over acid to neutral, mottled, brown sand to sandy loam (0.2 to 0.3m) over to 1.5m	Orthic Tenosol	Albivul soil	Ue3.11	Ue3.11				Bb	Bombilla	0.2 to 0.3m black to brown sandy loam A horizon over acid to neutral, mottled, brown sand to sandy loam (0.2 to 0.3m) over to 1.5m	Orthic Tenosol	Albivul soil	Ue3.11				
Bn	Burnett	0.15 to 0.35m brown to black sandy loam to clay loam (0.15 to 0.35m) over acid to neutral, mottled, brown sand to clay loam (0.15 to 0.35m) over to 1.5m	Orthic Tenosol	Albivul soil	Ue3.11	Ue3.11				Bn	Burnett	0.15 to 0.35m brown to black sandy loam to clay loam (0.15 to 0.35m) over acid to neutral, mottled, brown sand to clay loam (0.15 to 0.35m) over to 1.5m	Orthic Tenosol	Albivul soil	Ue3.11				
Fa, terraces, swales and scabbles																			
Fa	Fairfax	0.15 to 0.35m black to brown sandy loam to light clay A horizon over acid to neutral, mottled, brown sand to light clay (0.15 to 0.35m) over to 1.5m	Brown Dermosol	Phaeic soil	Ue3.12	Ue3.12				Fa	Fairfax	0.15 to 0.35m black to brown sandy loam to light clay A horizon over acid to neutral, mottled, brown sand to light clay (0.15 to 0.35m) over to 1.5m	Brown Dermosol	Phaeic soil	Ue3.12				
Gb	Gabon	0.15 to 0.4m black to brown sandy loam to light clay A horizon over acid to neutral, mottled, brown sand to light clay (0.15 to 0.4m) over to 1.5m	Brown Dermosol	Phaeic soil	Ue3.12	Ue3.12				Gb	Gabon	0.15 to 0.4m black to brown sandy loam to light clay A horizon over acid to neutral, mottled, brown sand to light clay (0.15 to 0.4m) over to 1.5m	Brown Dermosol	Phaeic soil	Ue3.12				
Gm	Gummit	0.15 to 0.4m black to brown sandy loam to light clay A horizon over acid to neutral, mottled, brown sand to light clay (0.15 to 0.4m) over to 1.5m	Brown Dermosol	Phaeic soil	Ue3.12	Ue3.12				Gm	Gummit	0.15 to 0.4m black to brown sandy loam to light clay A horizon over acid to neutral, mottled, brown sand to light clay (0.15 to 0.4m) over to 1.5m	Brown Dermosol	Phaeic soil	Ue3.12				
OLDER ALLUVIA																			
Leaves and scabbles																			
Bv	Boya	0.15 to 0.35m brown to grey loamy sand to clay, fine sandy clay. A horizon over acid to neutral, light to medium clay (0.15 to 0.35m) over to 1.5m	Red Dermosol	Non-saline brown soil	Dv3.12	Dv3.12				Bv	Boya	0.15 to 0.35m brown to grey loamy sand to clay, fine sandy clay. A horizon over acid to neutral, light to medium clay (0.15 to 0.35m) over to 1.5m	Red Dermosol	Non-saline brown soil	Dv3.12				
Plains and terraces																			
Ab	Auburn	0.1 to 0.3m black to grey loam to fine sandy clay A horizon (0.1 to 0.3m) over acid to alkaline, mottled, brown to grey medium clay (0.1 to 0.3m) over to 1.5m	Brown Sodosol	Solchic soil	Dv3.43	Dv3.43				Ab	Auburn	0.1 to 0.3m black to grey loam to fine sandy clay A horizon (0.1 to 0.3m) over acid to alkaline, mottled, brown to grey medium clay (0.1 to 0.3m) over to 1.5m	Brown Sodosol	Solchic soil	Dv3.43				
Cg	Crossing	0.1 to 0.35m black to grey loamy sand to fine sandy clay A horizon (0.1 to 0.35m) over acid to alkaline, mottled, brown to grey medium clay (0.1 to 0.35m) over to 1.5m	Brown Sodosol	Solchic soil	Dv3.43	Dv3.43				Cg	Crossing	0.1 to 0.35m black to grey loamy sand to fine sandy clay A horizon (0.1 to 0.35m) over acid to alkaline, mottled, brown to grey medium clay (0.1 to 0.35m) over to 1.5m	Brown Sodosol	Solchic soil	Dv3.43				
Mf	Moistland	0.2 to 0.35m brown sandy loam to light clay A horizon over bleached A2 horizon (0.2 to 0.35m) over to 1.5m	Red Dermosol	Solchic soil	Dv3.43	Dv3.43				Mf	Moistland	0.2 to 0.35m brown sandy loam to light clay A horizon over bleached A2 horizon (0.2 to 0.35m) over to 1.5m	Red Dermosol	Solchic soil	Dv3.43				
Pl	Picket	0.1 to 0.35m black to grey loam to fine sandy clay A horizon (0.1 to 0.35m) over acid to alkaline, mottled, brown to grey medium clay (0.1 to 0.35m) over to 1.5m	Red Dermosol	Red earth	Gv3.21	Gv3.21				Pl	Picket	0.1 to 0.35m black to grey loam to fine sandy clay A horizon (0.1 to 0.35m) over acid to alkaline, mottled, brown to grey medium clay (0.1 to 0.35m) over to 1.5m	Red Dermosol	Red earth	Gv3.21				
Plains and drainage depressions																			
Hk	Hecker	0.1 to 0.35m black to grey loam to fine sandy clay A horizon (0.1 to 0.35m) over acid to alkaline, mottled, brown to grey medium clay (0.1 to 0.35m) over to 1.5m	Black Vertisol	Black earth	Uq3.16	Uq3.16				Hk	Hecker	0.1 to 0.35m black to grey loam to fine sandy clay A horizon (0.1 to 0.35m) over acid to alkaline, mottled, brown to grey medium clay (0.1 to 0.35m) over to 1.5m	Black Vertisol	Black earth	Uq3.16				
Wf	Willa	A horizon over acid to alkaline, mottled, brown to grey medium clay (0.1 to 0.35m) over to 1.5m	Grey Vertisol	Grey clay	Uq3.24	Uq3.24				Wf	Willa	A horizon over acid to alkaline, mottled, brown to grey medium clay (0.1 to 0.35m) over to 1.5m	Grey Vertisol	Grey clay	Uq3.24				
SOILS OF THE ALLUVIAL PLAINS OF LOCAL STREAMS																			
Leaves and scabbles																			
Ls	Lindale	0.1 to 0.35m black to grey sandy loam to loam fine sandy clay loam over acid to neutral, mottled, brown sand to sandy loam (0.1 to 0.35m) over to 1.5m	Milva Kandosol	Milva earth	Uq3.25	Uq3.25				Ls	Lindale	0.1 to 0.35m black to grey sandy loam to loam fine sandy clay loam over acid to neutral, mottled, brown sand to sandy loam (0.1 to 0.35m) over to 1.5m	Milva Kandosol	Milva earth	Uq3.25				
Plains																			
Pp	Pep	0.05 to 0.15m black to grey loam to fine sandy clay A horizon (0.05 to 0.15m) over acid to alkaline, mottled, brown to grey medium clay (0.05 to 0.15m) over to 1.5m	Grey Sodosol	Solchic soil	Dv3.41	Dv3.41				Pp	Pep	0.05 to 0.15m black to grey loam to fine sandy clay A horizon (0.05 to 0.15m) over acid to alkaline, mottled, brown to grey medium clay (0.05 to 0.15m) over to 1.5m	Grey Sodosol	Solchic soil	Dv3.41				
Vh	Whithow	0.02 to 0.08m black to grey loam to fine sandy clay A horizon over acid to alkaline, mottled, brown to grey medium clay (0.02 to 0.08m) over to 1.5m	Black Vertisol	Black earth	Uq3.24	Uq3.24				Vh	Whithow	0.02 to 0.08m black to grey loam to fine sandy clay A horizon over acid to alkaline, mottled, brown to grey medium clay (0.02 to 0.08m) over to 1.5m	Black Vertisol	Black earth	Uq3.24				
Plains, drainage depressions of plains and lower slopes of rises																			
Al	Alloway	0.1 to 0.2m grey loam to fine sandy clay A horizon over acid to neutral, mottled, brown sand to sandy loam (0.1 to 0.2m) over to 1.5m	Red Dermosol	Clayed podsol soil	Gc3.04	Gc3.04				Al	Alloway	0.1 to 0.2m grey loam to fine sandy clay A horizon over acid to neutral, mottled, brown sand to sandy loam (0.1 to 0.2m) over to 1.5m	Red Dermosol	Clayed podsol soil	Gc3.04				
Kn	Kinross	0.15 to 0.35m black to grey loam over bleached A2 horizon (0.15 to 0.35m) over to 1.5m	Aplic Podsol	Podsol	Uc3.22	Uc3.22				Kn	Kinross	0.15 to 0.35m black to grey loam over bleached A2 horizon (0.15 to 0.35m) over to 1.5m	Aplic Podsol	Podsol	Uc3.22				
Mh	Maleny	0.1 to 0.2m grey loam to fine sandy clay A horizon over acid to neutral, mottled, brown sand to sandy loam (0.1 to 0.2m) over to 1.5m	Red Dermosol	No suitable group	Gc3.94	Gc3.94				Mh	Maleny	0.1 to 0.2m grey loam to fine sandy clay A horizon over acid to neutral, mottled, brown sand to sandy loam (0.1 to 0.2m) over to 1.5m	Red Dermosol	No suitable group	Gc3.94				
Rb	Robur	0.05 to 0.15m grey loam over acid to neutral, mottled, brown sand to sandy loam (0.05 to 0.15m) over to 1.5m	Red Dermosol	Solchic soil	Dv3.41	Dv3.41				Rb	Robur	0.05 to 0.15m grey loam over acid to neutral, mottled, brown sand to sandy loam (0.05 to 0.15m) over to 1.5m	Red Dermosol	Solchic soil	Dv3.41				
Th	Theobalds	0.05 to 0.15m grey loam over acid to neutral, mottled, brown sand to sandy loam (0.05 to 0.15m) over to 1.5m	Red Dermosol	Solchic soil	Dv3.41	Dv3.41				Th	Theobalds	0.05 to 0.15m grey loam over acid to neutral, mottled, brown sand to sandy loam (0.05 to 0.15m) over to 1.5m	Red Dermosol	Solchic soil	Dv3.41				
Wf	Winfield	0.05 to 0.15m grey loam over acid to neutral, mottled, brown sand to sandy loam (0.05 to 0.15m) over to 1.5m	Red Dermosol	Bleached earthy soil	Uc3.22	Uc3.22				Wf	Winfield	0.05 to 0.15m grey loam over acid to neutral, mottled, brown sand to sandy loam (0.05 to 0.15m) over to 1.5m	Red Dermosol	Bleached earthy soil	Uc3.22				
Wm	Walan	0.1 to 0.25m grey loam over acid to neutral, mottled, brown sand to sandy loam (0.1 to 0.25m) over to 1.5m	Aplic Podsol	(Fludimentary) Podsol	Uc3.21	Uc3.21				Wm	Walan	0.1 to 0.25m grey loam over acid to neutral, mottled, brown sand to sandy loam (0.1 to 0.25m) over to 1.5m	Aplic Podsol	(Fludimentary) Podsol	Uc3.21				
DEEPLY WEATHERED FINE GRAINED SEDIMENTARY ROCKS																			
Plains, and crests, upper and mid-slopes of rises																			
Cd	Cedars	0.1 to 0.25m black to brown loam to light clay A horizon over acid to neutral, mottled, brown sand to light clay (0.1 to 0.25m) over to 1.5m	Brown Dermosol	Xanthosol	Uq3.41	Uq3.41				Cd	Cedars	0.1 to 0.25m black to brown loam to light clay A horizon over acid to neutral, mottled, brown sand to light clay (0.1 to 0.25m) over to 1.5m	Brown Dermosol	Xanthosol	Uq3.41				
Gv	Gibson	0.15 to 0.35m black to brown loam to light clay A horizon over acid to neutral, mottled, brown sand to light clay (0.15 to 0.35m) over to 1.5m	Red Dermosol	Xanthosol	Uq3.53	Uq3.53				Gv	Gibson	0.15 to 0.35m black to brown loam to light clay A horizon over acid to neutral, mottled, brown sand to light clay (0.15 to 0.35m) over to 1.5m	Red Dermosol	Xanthosol	Uq3.53				
Hk	Keppock	0.05 to 0.15m grey loam over acid to neutral, mottled, brown sand to sandy loam (0.05 to 0.15m) over to 1.5m	Yellow Dermosol	No suitable group	Gc3.85	Gc3.85				Hk	Keppock	0.05 to 0.15m grey loam over acid to neutral, mottled, brown sand to sandy loam (0.05 to 0.15m) over to 1.5m	Yellow Dermosol	No suitable group	Gc3.85				
Nv	Narville	0.1 to 0.2m black to brown loam to light clay A horizon over acid to neutral, mottled, brown sand to light clay (0.1 to 0.2m) over to 1.5m	Brown Dermosol	Solchic soil	Dv3.43	Dv3.43				Nv	Narville	0.1 to 0.2m black to brown loam to light clay A horizon over acid to neutral, mottled, brown sand to light clay (0.1 to 0.2m) over to 1.5m	Brown Dermosol	Solchic soil	Dv3.43				
Ok	Oakwood	0.25 to 0.35m black to brown loam to light clay A horizon over acid to neutral, mottled, brown sand to light clay (0.25 to 0.35m) over to 1.5m	Red Dermosol	Red earth	Gv3.21	Gv3.21				Ok	Oakwood	0.25 to 0.35m black to brown loam to light clay A horizon over acid to neutral, mottled, brown sand to light clay (0.25 to 0.35m) over to 1.5m	Red Dermosol	Red earth	Gv3.21				
Ov	Otto	0.1 to 0.25m black to brown loam to light clay A horizon over acid to neutral, mottled, brown sand to light clay (0.1 to 0.25m) over to 1.5m	Red Dermosol	Red podsol soil	Gc3.51	Gc3.51				Ov	Otto	0.1 to 0.25m black to brown loam to light clay A horizon over acid to neutral, mottled, brown sand to light clay (0.1 to 0.25m) over to 1.5m	Red Dermosol	Red podsol soil	Gc3.51				
Vm	Volmer	0.05 to 0.15m grey loam over acid to neutral, mottled, brown sand to sandy loam (0.05 to 0.15m) over to 1.5m	Yellow Dermosol	Yellow podsol soil	Gc3.84	Gc3.84				Vm	Volmer	0.05 to 0.15m grey loam over acid to neutral, mottled, brown sand to sandy loam (0.05 to 0.15m) over to 1.5m	Yellow Dermosol	Yellow podsol soil	Gc3.84				
Vv	Vindgen	0.05 to 0.15m grey loam over acid to neutral, mottled, brown sand to sandy loam (0.05 to 0.15m) over to 1.5m	Red Dermosol	Red podsol soil	Gc3.51	Gc3.51				Vv	Vindgen	0.05 to 0.15m grey loam over acid to neutral, mottled, brown sand to sandy loam (0.05 to 0.15m) over to 1.5m	Red Dermosol	Red podsol soil	Gc3.51				
MODERATELY WEATHERED SEDIMENTARY ROCKS																			
Crests and hillslopes																			
Bc	Borcia	0.05 to 0.15m brown loam to medium clay A horizon (0.05 to 0.15m) over acid to neutral, mottled, brown sand to sandy loam (0.05 to 0.15m) over to 1.5m	Brown Vertisol	Brown day soil	Uq3.35	Uq3.35				Bc	Borcia	0.05 to 0.15m brown loam to medium clay A horizon (0.05 to 0.15m) over acid to neutral, mottled, brown sand to sandy loam (0.05 to 0.15m) over to 1.5m	Brown Vertisol	Brown day soil	Uq3.35				
Bv	Brownsmead	0.05 to 0.15m grey loam over acid to neutral, mottled, brown sand to sandy loam (0.05 to 0.15m) over to 1.5m	Brown Dermosol	No suitable group	Uc3.12	Uc3.12				Bv	Brownsmead	0.05 to 0.15m grey loam over acid to neutral, mottled, brown sand to sandy loam (0.05 to 0.15m) over to 1.5m	Brown Dermosol	No suitable group	Uc3.12				
Bw	Brownsmead	0.05 to 0.15m grey loam over acid to neutral, mottled, brown sand to sandy loam (0.05 to 0.15m) over to 1.5m	Brown Dermosol	No suitable group	Uc3.12	Uc3.12				Bw	Brownsmead	0.05 to 0.15m grey loam over acid to neutral, mottled, brown sand to sandy loam (0.05 to 0.15m) over to 1.5m	Brown Dermosol	No suitable group	Uc3.12				
Ca	Call	0.1 to 0.2m black to grey loam over acid to neutral, mottled, brown sand to light clay (0.1 to 0.2m) over to 1.5m	Grey Vertisol	Solchic soil	Dv3.41	Dv3.41				Ca	Call	0.1 to 0.2m black to grey loam over acid to neutral, mottled, brown sand to light clay (0.1 to 0.2m) over to 1.5m	Grey Vertisol	Solchic soil	Dv3.41				
Gv	Greenway	0.05 to 0.15m grey loam over acid to neutral, mottled, brown sand to sandy loam (0.05 to 0.15m) over to 1.5m	Brown Dermosol	No suitable group	Uc3.12	Uc3.12				Gv	Greenway	0.05 to 0.15m grey loam over acid to neutral, mottled, brown sand to sandy loam (0.05 to 0.15m) over to 1.5m	Brown Dermosol	No suitable group	Uc3.12				
Kc	Kellan	0.02 to 0.05m black to grey loam to fine sandy clay A horizon (0.02 to 0.05m) over acid to neutral, mottled, brown sand to sandy loam (0.02 to 0.05m) over to 1.5m	Grey Vertisol	Solchic soil	Dv3.41	Dv3.41				Kc	Kellan	0.02 to 0.05m black to grey loam to fine sandy clay A horizon (0.02 to 0.05m) over acid to neutral, mottled, brown sand to sandy loam (0.02 to 0.05m) over to 1.5m	Grey Vertisol	Solchic soil	Dv3.41				
Tm	Timon	0.05 to 0.15m black to grey loam over acid to neutral, mottled, brown sand to sandy loam (0.05 to 0.15m) over to 1.5m	Brown Dermosol	No suitable group	Uc3.12	Uc3.12				Tm	Timon	0.05 to 0.15m black to grey loam over acid to neutral, mottled, brown sand to sandy loam (0.05 to 0.15m) over to 1.5m	Brown Dermosol	No suitable group	Uc3.12				
SOILS OF THE RISES AND LOW HILLS ON BASIC VOLCANIC ROCKS																			
Crests and hillslopes																			
Bc	Beran	0.05 to 0.25m black to brown loam to light clay A horizon over acid to neutral, mottled, brown sand to light clay (0.05 to 0.25m) over to 1.5m	Brown Dermosol	Pairic soil	Uq3.31	Uq3.31				Bc	Beran	0.05 to 0.25m black to brown loam to light clay A horizon over acid to neutral, mottled, brown sand to light clay (0.05 to 0.25m) over to 1.5m	Brown Dermosol	Pairic soil	Uq3.31				
Ci	Cortfield	0.1 to 0.35m black to brown loam to light clay A horizon over acid to neutral, mottled, brown sand to light clay (0.1 to 0.35m) over to 1.5m	Brown Dermosol	Pairic soil	Uq3.21	Uq3.21				Ci	Cortfield	0.1 to 0.35m black to brown loam to light clay A horizon over acid to neutral, mottled, brown sand to light clay (0.1 to 0.35m) over to 1.5m	Brown Dermosol	Pairic soil	Uq3.21				