

Beacon to Beacon Guide

Noosa River



Noosa River and Weyba Creek





Published by

Maritime Safety Queensland
© Copyright The State of Queensland
(Department of Transport and Main Roads) 2024



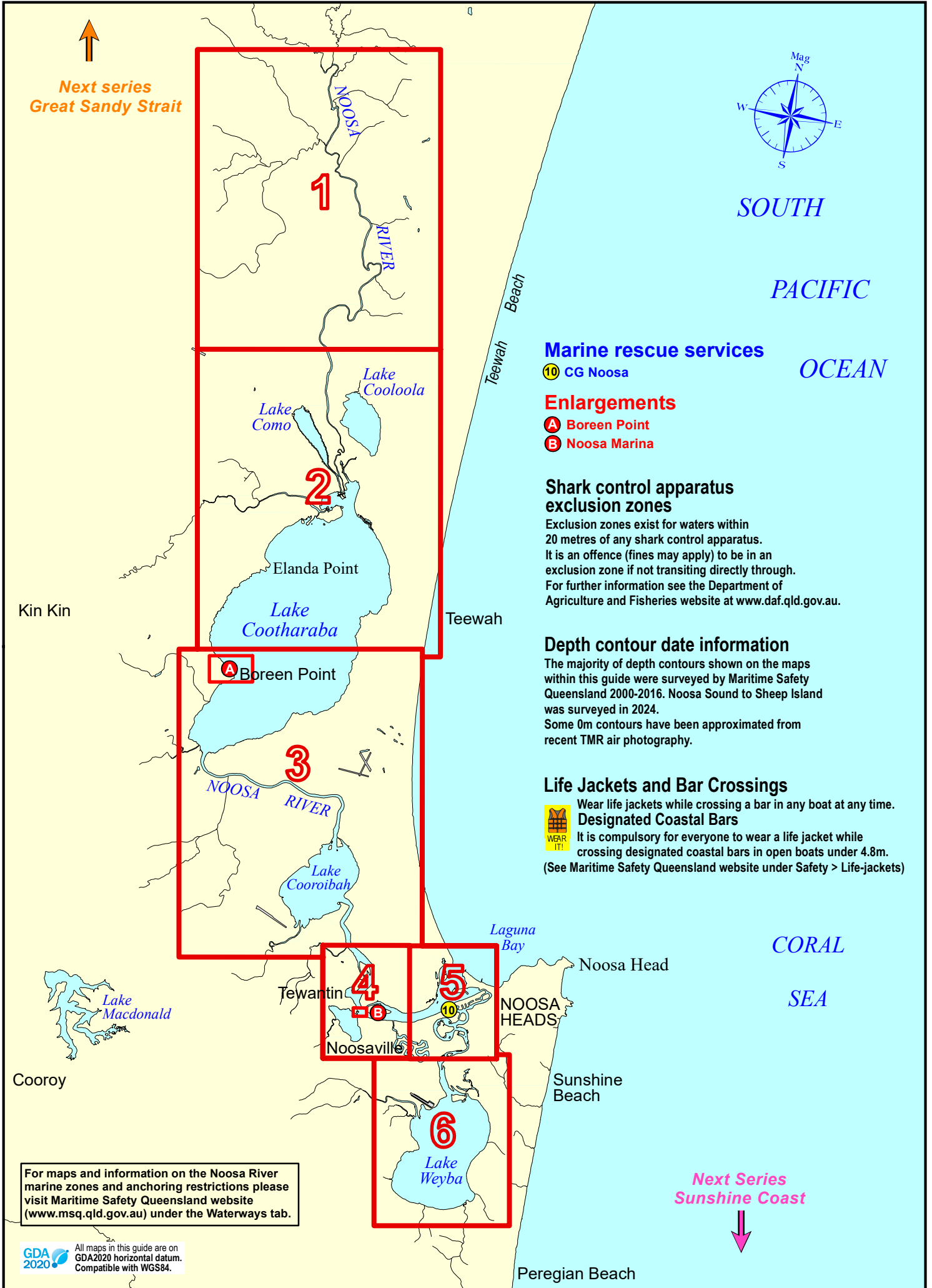
To view a copy of this licence, visit
<https://creativecommons.org/licenses/by/4.0/>

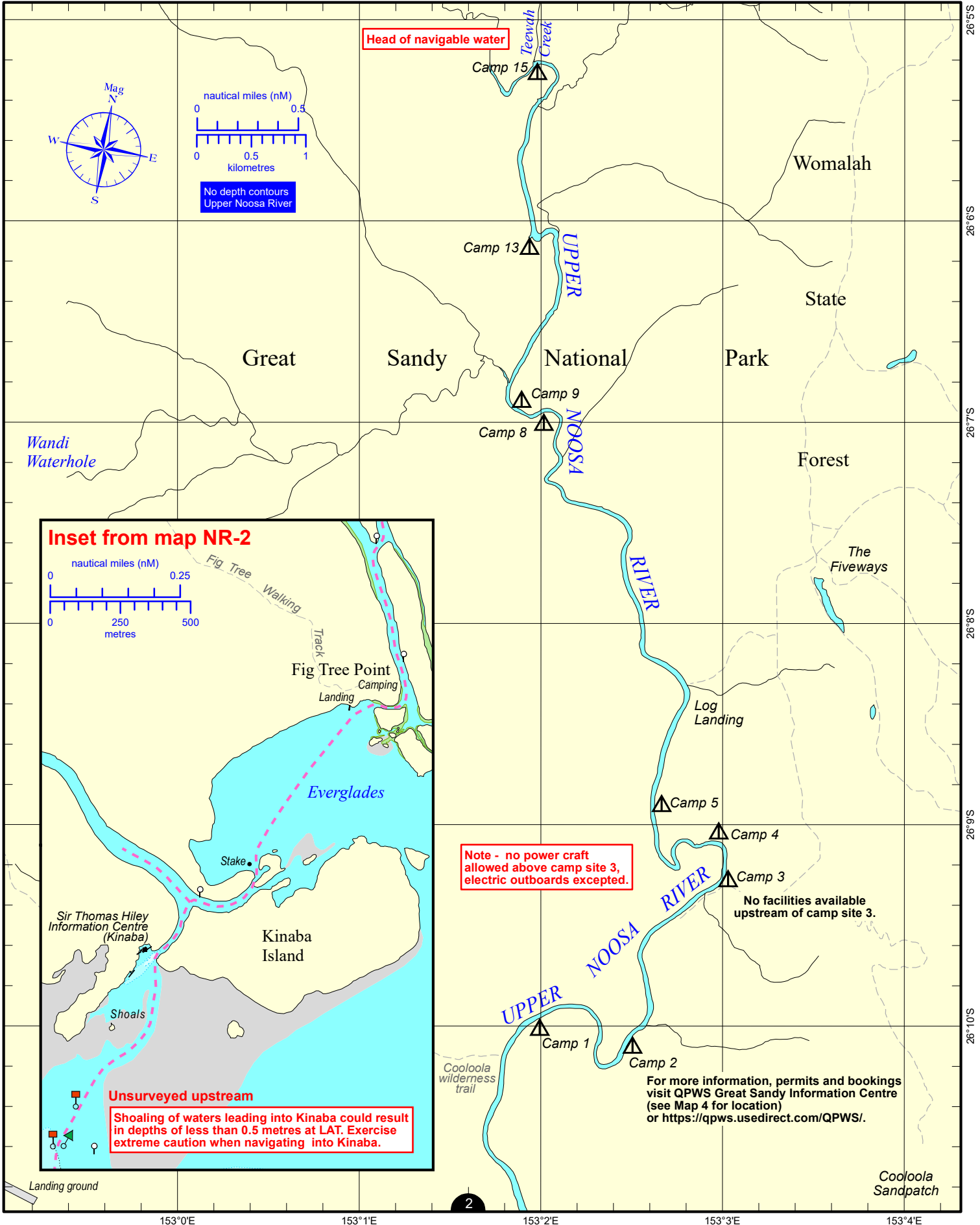
For commercial use terms and conditions

Please visit the Maritime Safety Queensland website at www.msq.qld.gov.au

‘How to’ use this guide



Use this Beacon to Beacon Guide with the ‘How to’ and legend booklet available from www.msq.qld.gov.au

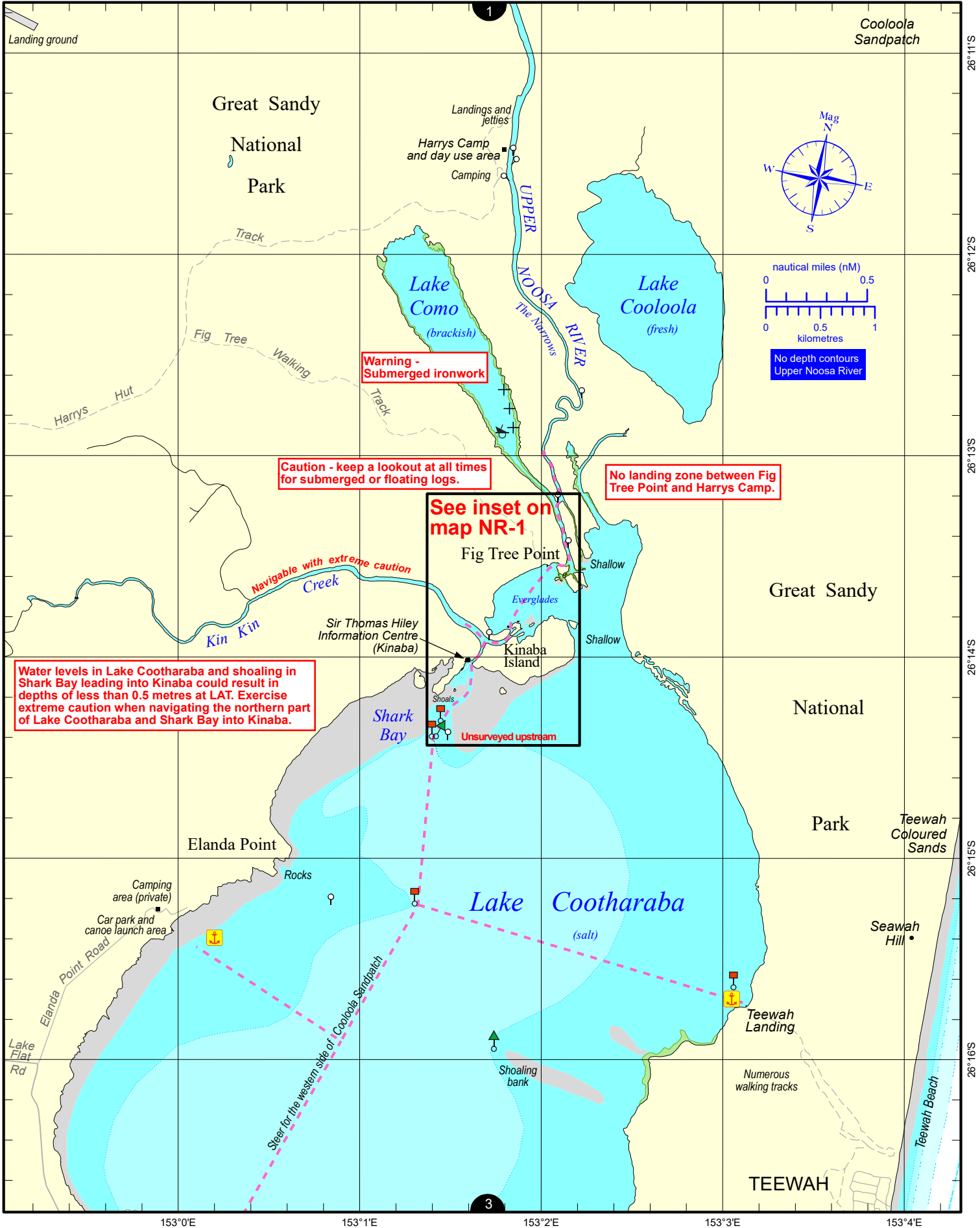




Always keep a proper lookout when boating. Exercise care at all times.
 Look up and live for power and cable crossings that may not be shown on these maps due to scale or recent construction.
CAUTION: Limited depth contour data is available for part of these waters. (Refer to the Key Sheet for this guide to determine date of survey information).
 Note that depths may change following floods.
Exercise care when travelling outside suggested navigation tracks.
 © Copyright The State of Queensland 2024
 Queensland Department of Transport and Main Roads - Maritime Safety Queensland.
 To reproduce any map within this series, see terms and conditions at Maritime Safety Queensland's website (www.msq.qld.gov.au)



Nautical information current to 28 August 2024

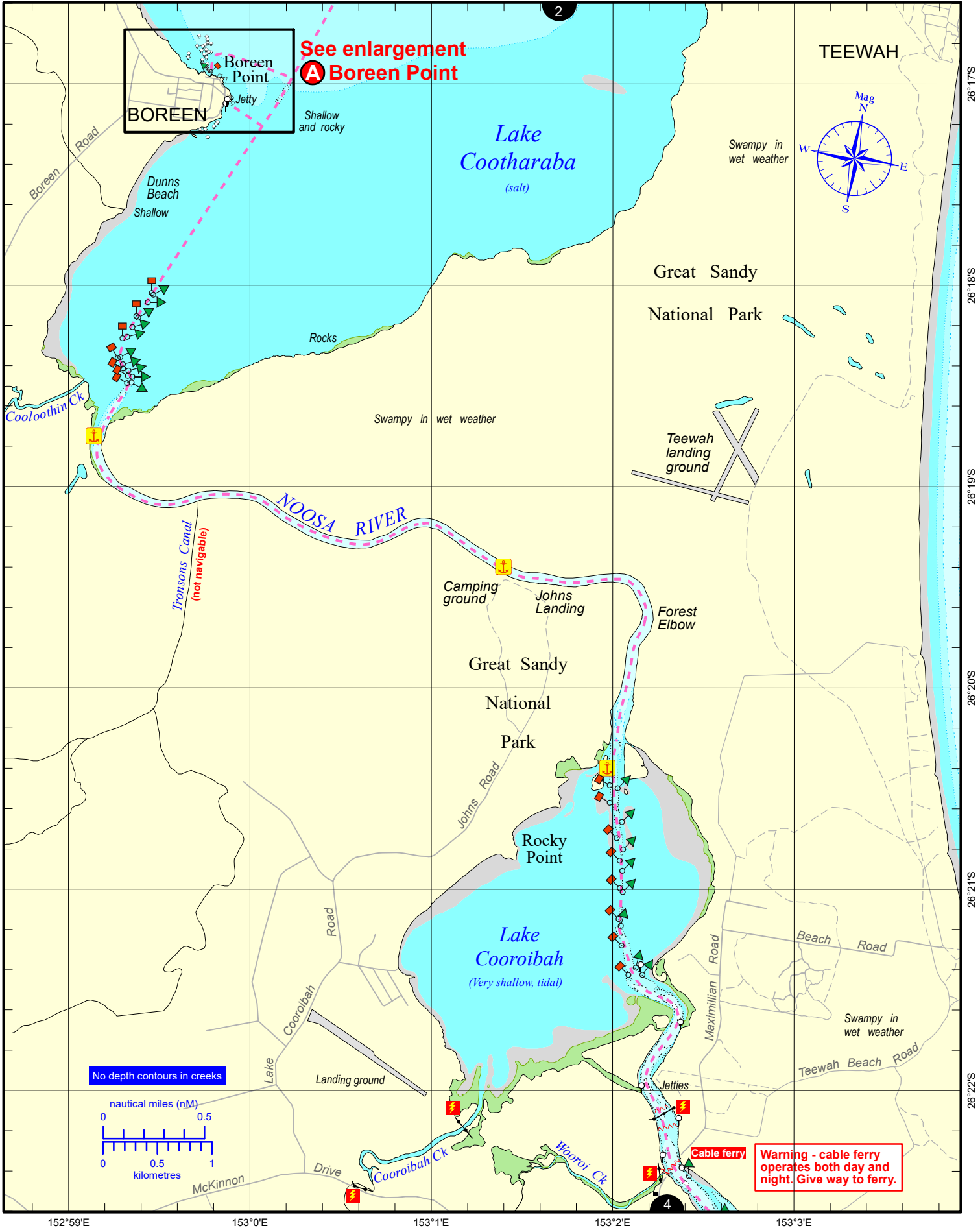





Always keep a proper lookout when boating. Exercise care at all times.
 Look up and live for power and cable crossings that may not be shown on these maps due to scale or recent construction.
CAUTION: Limited depth contour data is available for part of these waters. (Refer to the Key Sheet for this guide to determine date of survey information).
 Note that depths may change following floods.
Exercise care when travelling outside suggested navigation tracks.
 © Copyright The State of Queensland 2024
 Queensland Department of Transport and Main Roads - Maritime Safety Queensland.
 To reproduce any map within this series, see terms and conditions at Maritime Safety Queensland's website (www.msq.qld.gov.au)



Nautical information current to 28 August 2024

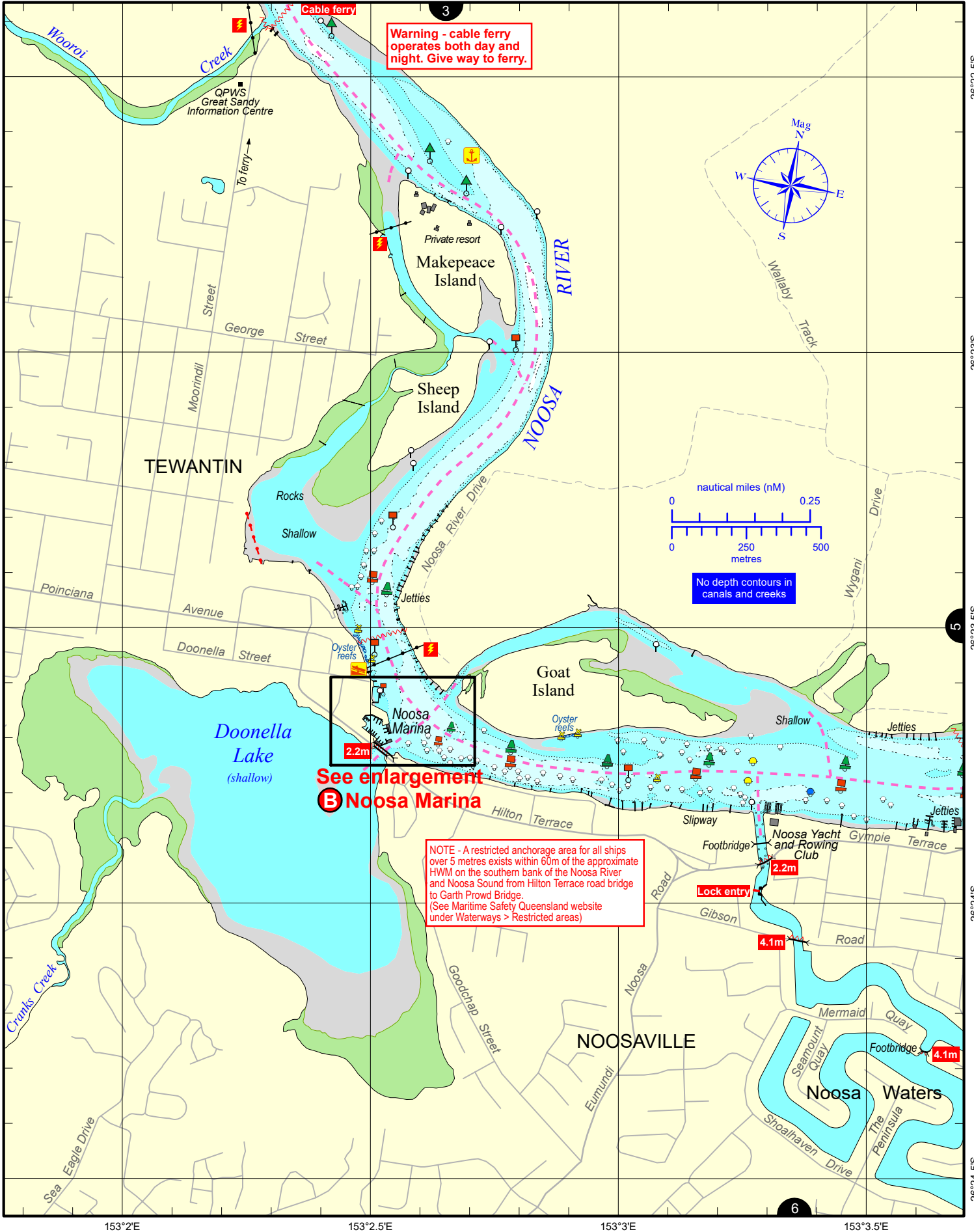





Always keep a proper lookout when boating. Exercise care at all times.
 Look up and live for power and cable crossings that may not be shown on these maps due to scale or recent construction.
CAUTION: Limited depth contour data is available for part of these waters. (Refer to the Key Sheet for this guide to determine date of survey information).
 Note that depths may change following floods.
Exercise care when travelling outside suggested navigation tracks.
 © Copyright The State of Queensland 2024
 Queensland Department of Transport and Main Roads - Maritime Safety Queensland.
 To reproduce any map within this series, see terms and conditions at Maritime Safety Queensland's website (www.msq.qld.gov.au)

Nautical information current to 28 August 2024


 **Queensland Government**



Warning - cable ferry operates both day and night. Give way to ferry.

See enlargement B Noosa Marina



NOTE - A restricted anchorage area for all ships over 5 metres exists within 60m of the approximate HWM on the southern bank of the Noosa River and Noosa Sound from Hilton Terrace road bridge to Garth Prowd Bridge. (See Maritime Safety Queensland website under Waterways > Restricted areas)

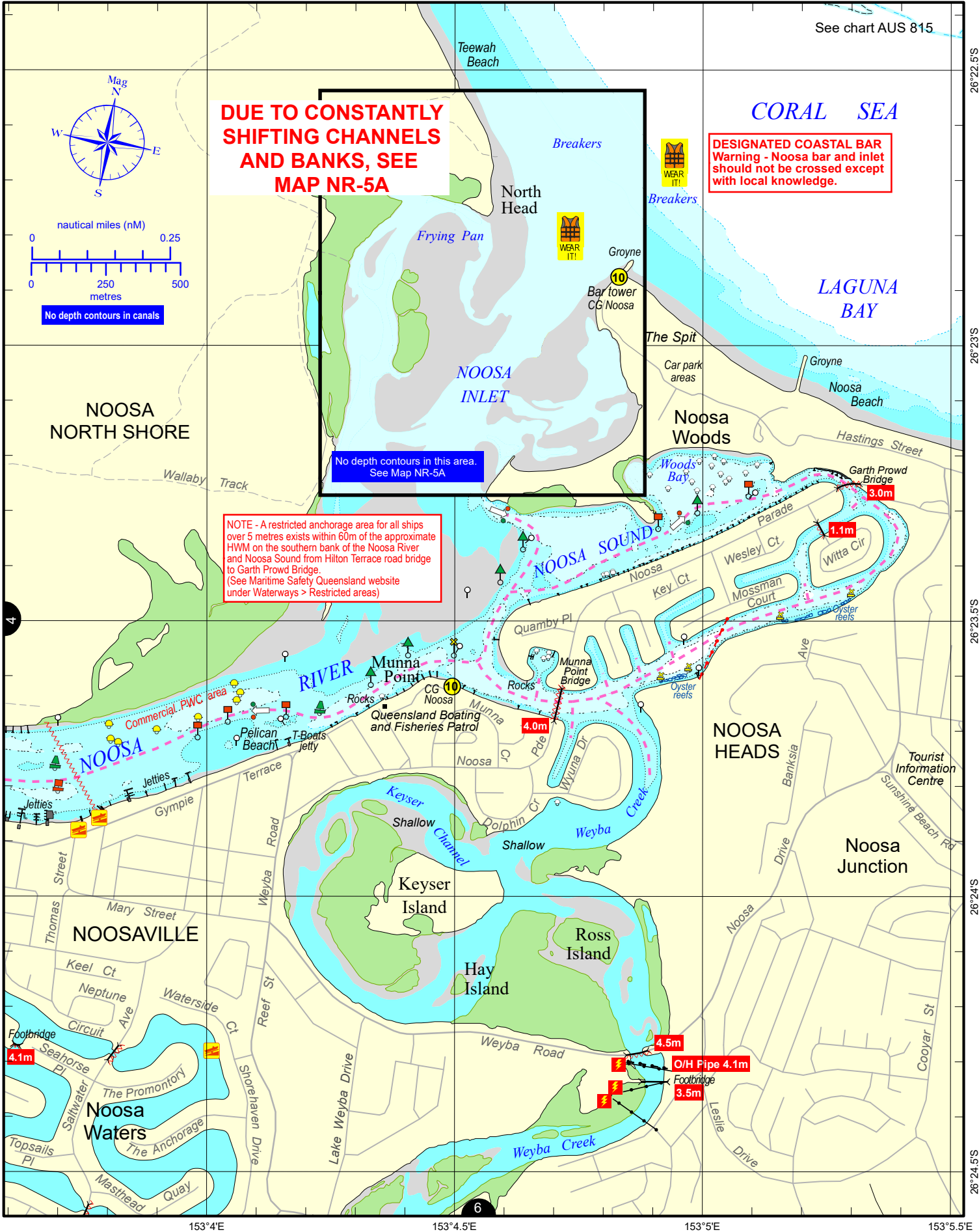


153°4.25'E 153°4.5'E 153°4.75'E 26°22.75'S 26°23'S 26°23.25'S

Always keep a proper lookout when boating. Exercise care at all times.
Look up and live for power and cable crossings that may not be shown on these maps due to scale or recent construction.
CAUTION: Limited depth contour data is available for part of these waters. (Refer to the Key Sheet for this guide to determine date of survey information).
 Note that depths may change following floods.
Exercise care when travelling outside suggested navigation tracks.
 © Copyright The State of Queensland 2024
 Queensland Department of Transport and Main Roads - Maritime Safety Queensland.
 To reproduce any map within this series, see terms and conditions at Maritime Safety Queensland's website (www.msq.qld.gov.au)


Nautical information current to 28 August 2024


 **Queensland Government**



Always keep a proper lookout when boating. Exercise care at all times.
 Look up and live for power and cable crossings that may not be shown on these maps due to scale or recent construction.
CAUTION: Limited depth contour data is available for part of these waters. (Refer to the Key Sheet for this guide to determine date of survey information).
 Note that depths may change following floods.
 Exercise care when travelling outside suggested navigation tracks.
 © Copyright The State of Queensland 2024
 Queensland Department of Transport and Main Roads - Maritime Safety Queensland.
 To reproduce any map within this series, see terms and conditions at Maritime Safety Queensland's website (www.msq.qld.gov.au)



Nautical information current to 28 August 2024

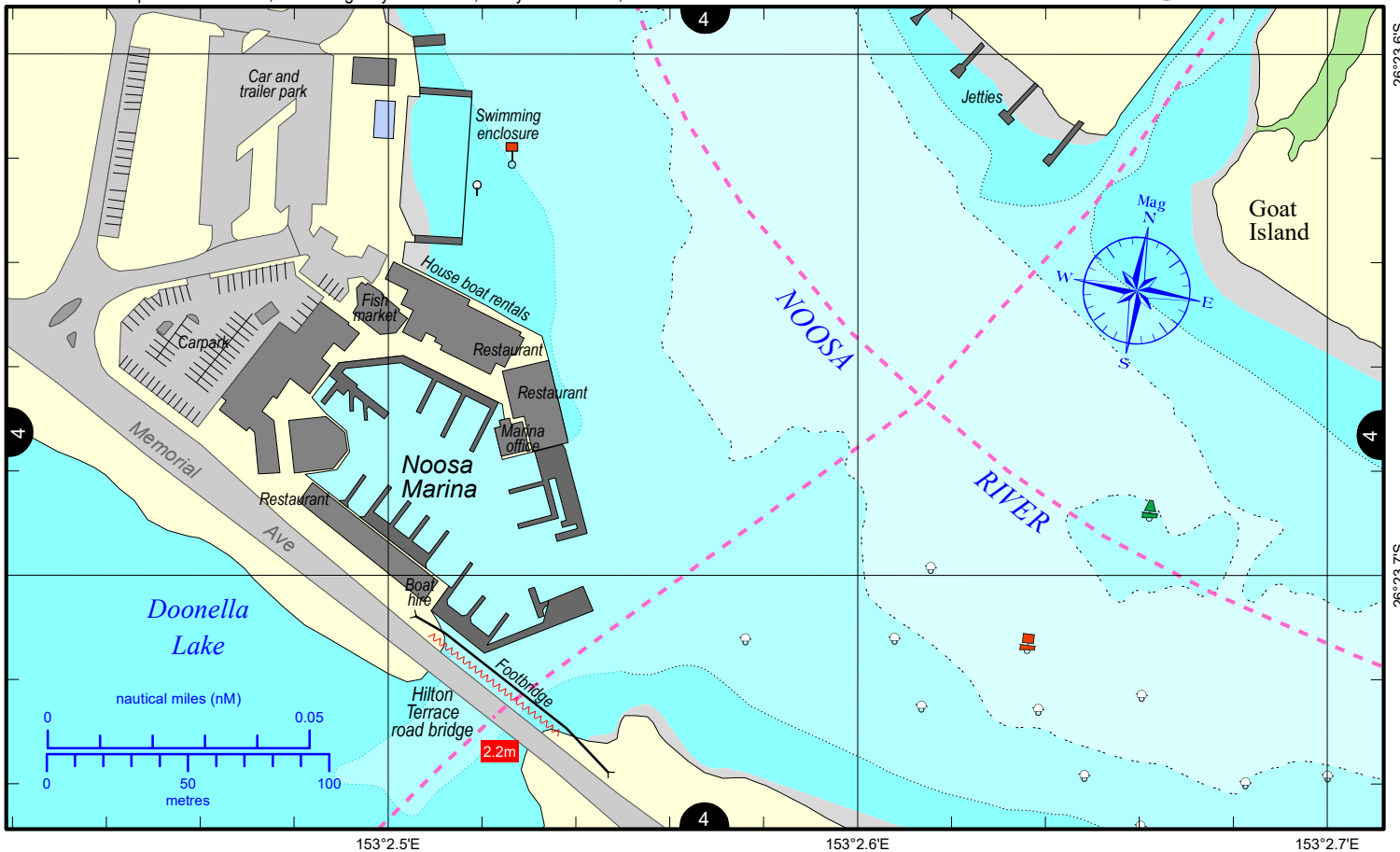
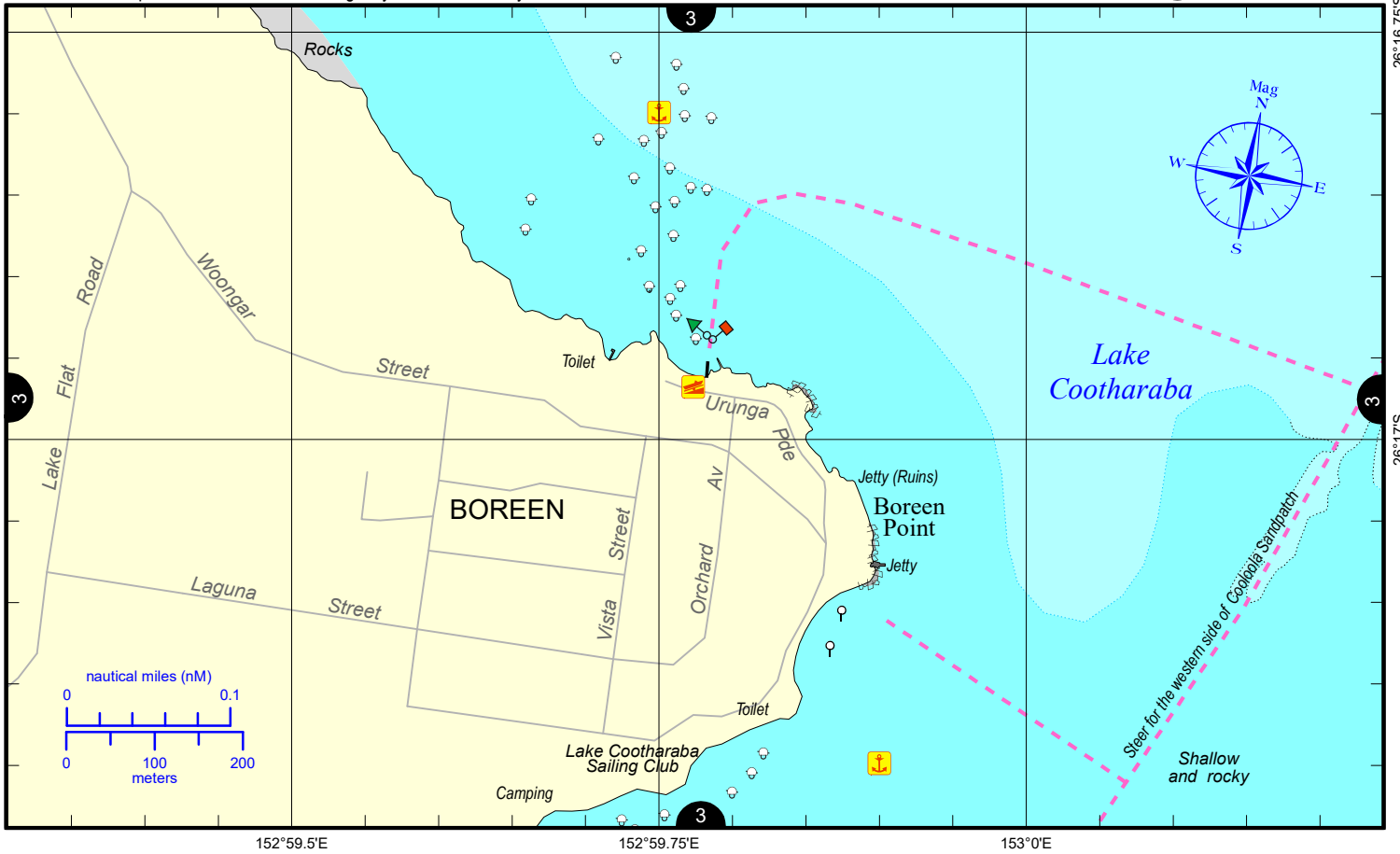

Queensland Government



Always keep a proper lookout when boating. Exercise care at all times.
Look up and live for power and cable crossings that may not be shown on these maps due to scale or recent construction.
CAUTION: Limited depth contour data is available for part of these waters. (Refer to the Key Sheet for this guide to determine date of survey information).
 Note that depths may change following floods.
Exercise care when travelling outside suggested navigation tracks.
 © Copyright The State of Queensland 2024
 Queensland Department of Transport and Main Roads - Maritime Safety Queensland.
 To reproduce any map within this series, see terms and conditions at Maritime Safety Queensland's website (www.msq.qld.gov.au)

Nautical information current to 28 August 2024


 **Queensland Government**



Always keep a proper lookout when boating. Exercise care at all times.
 Look up and live for power and cable crossings that may not be shown on these maps due to scale or recent construction.
CAUTION: Limited depth contour data is available for part of these waters. (Refer to the Key Sheet for this guide to determine date of survey information).
 Note that depths may change following floods.
Exercise care when travelling outside suggested navigation tracks.
 © Copyright The State of Queensland 2024
 Queensland Department of Transport and Main Roads - Maritime Safety Queensland.
 To reproduce any map within this series, see terms and conditions at Maritime Safety Queensland's website (www.msq.qld.gov.au)

Nautical information current to 28 August 2024

