

# Beacon to Beacon Guide

## Capricorn Coast



Great Keppel Island





### **Published by**

Maritime Safety Queensland  
© Copyright The State of Queensland  
(Department of Transport and Main Roads) 2024



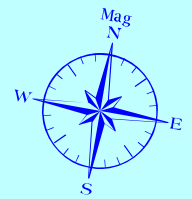
To view a copy of this licence, visit  
<https://creativecommons.org/licenses/by/4.0/>

### **For commercial use terms and conditions**

Please visit the Maritime Safety Queensland website at [www.msq.qld.gov.au](http://www.msq.qld.gov.au)

### **‘How to’ use this guide**

Use this Beacon to Beacon Guide with the ‘How to’ and legend booklet available from [www.msq.qld.gov.au](http://www.msq.qld.gov.au)



## Marine rescue services

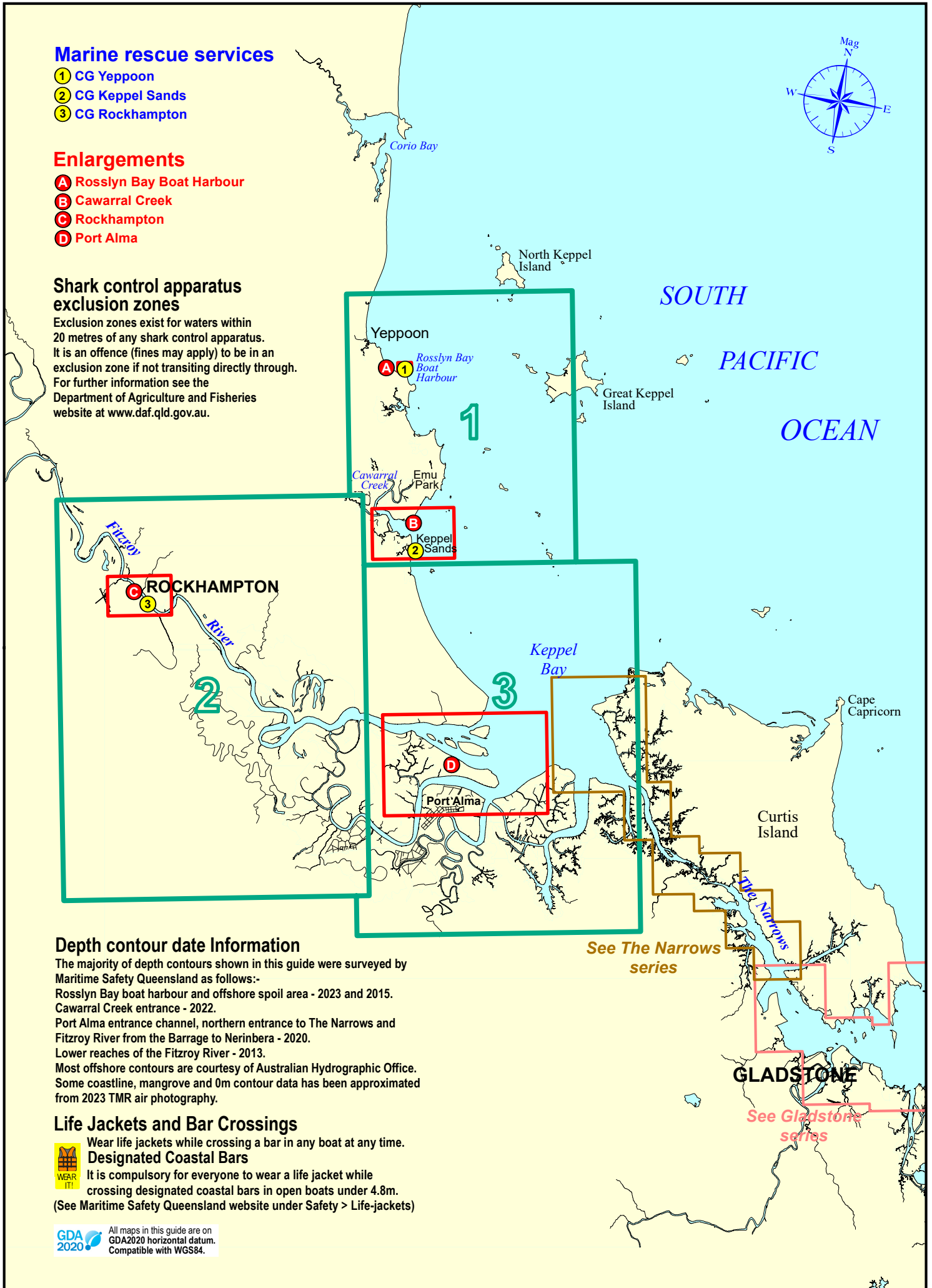
- ① CG Yeppoon
- ② CG Keppel Sands
- ③ CG Rockhampton

## Enlargements

- Ⓐ Rosslyn Bay Boat Harbour
- Ⓑ Cawarral Creek
- Ⓒ Rockhampton
- Ⓓ Port Alma

## Shark control apparatus exclusion zones

Exclusion zones exist for waters within 20 metres of any shark control apparatus. It is an offence (fines may apply) to be in an exclusion zone if not transiting directly through. For further information see the Department of Agriculture and Fisheries website at [www.daf.qld.gov.au](http://www.daf.qld.gov.au).



## Depth contour date Information

The majority of depth contours shown in this guide were surveyed by Maritime Safety Queensland as follows:-  
 Rosslyn Bay boat harbour and offshore spoil area - 2023 and 2015.  
 Cawarral Creek entrance - 2022.  
 Port Alma entrance channel, northern entrance to The Narrows and Fitzroy River from the Barrage to Nerinbera - 2020.  
 Lower reaches of the Fitzroy River - 2013.  
 Most offshore contours are courtesy of Australian Hydrographic Office. Some coastline, mangrove and 0m contour data has been approximated from 2023 TMR air photography.

## Life Jackets and Bar Crossings

Wear life jackets while crossing a bar in any boat at any time.

### Designated Coastal Bars

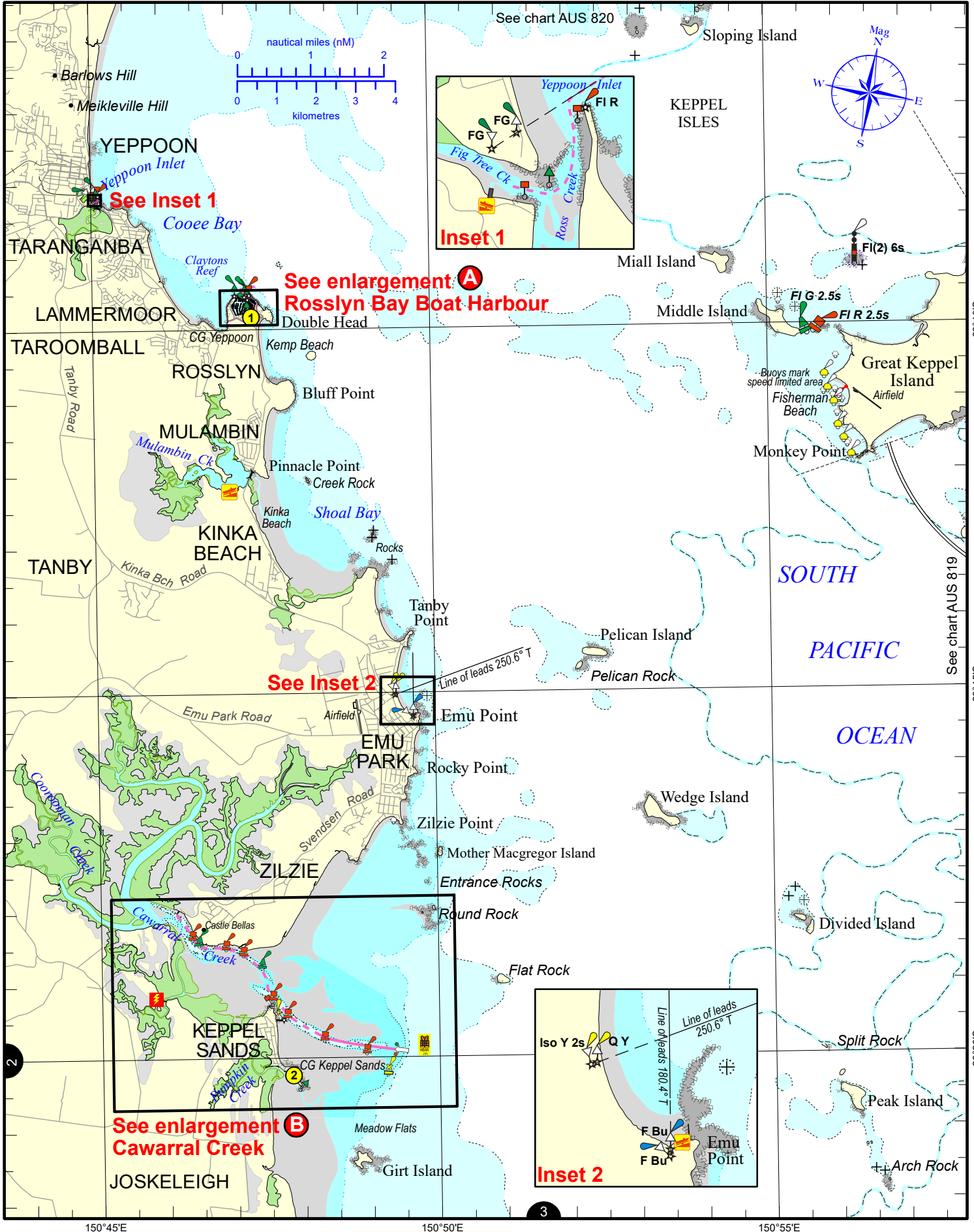
It is compulsory for everyone to wear a life jacket while crossing designated coastal bars in open boats under 4.8m.

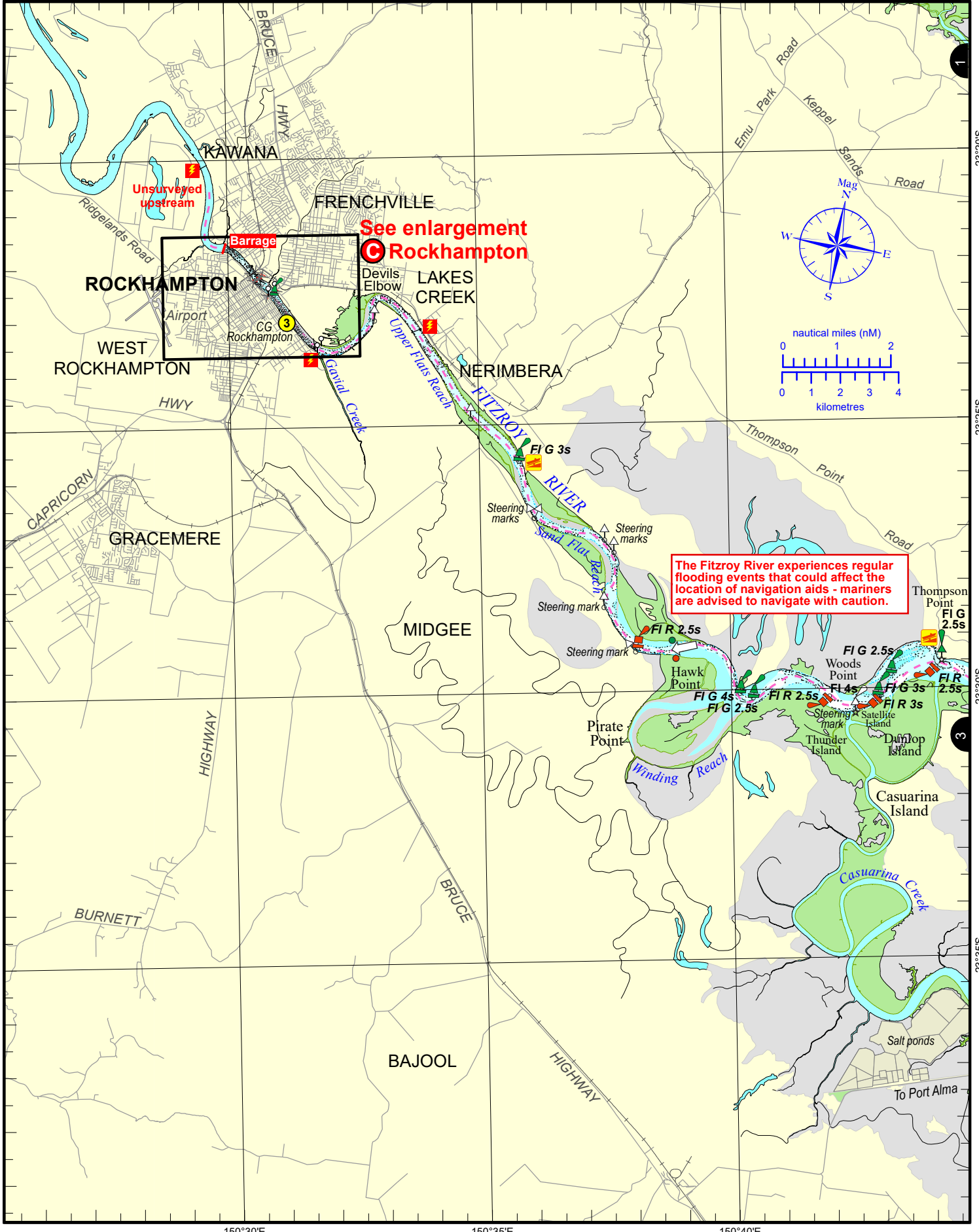
(See Maritime Safety Queensland website under Safety > Life-jackets)



See The Narrows series



See Gladstone series

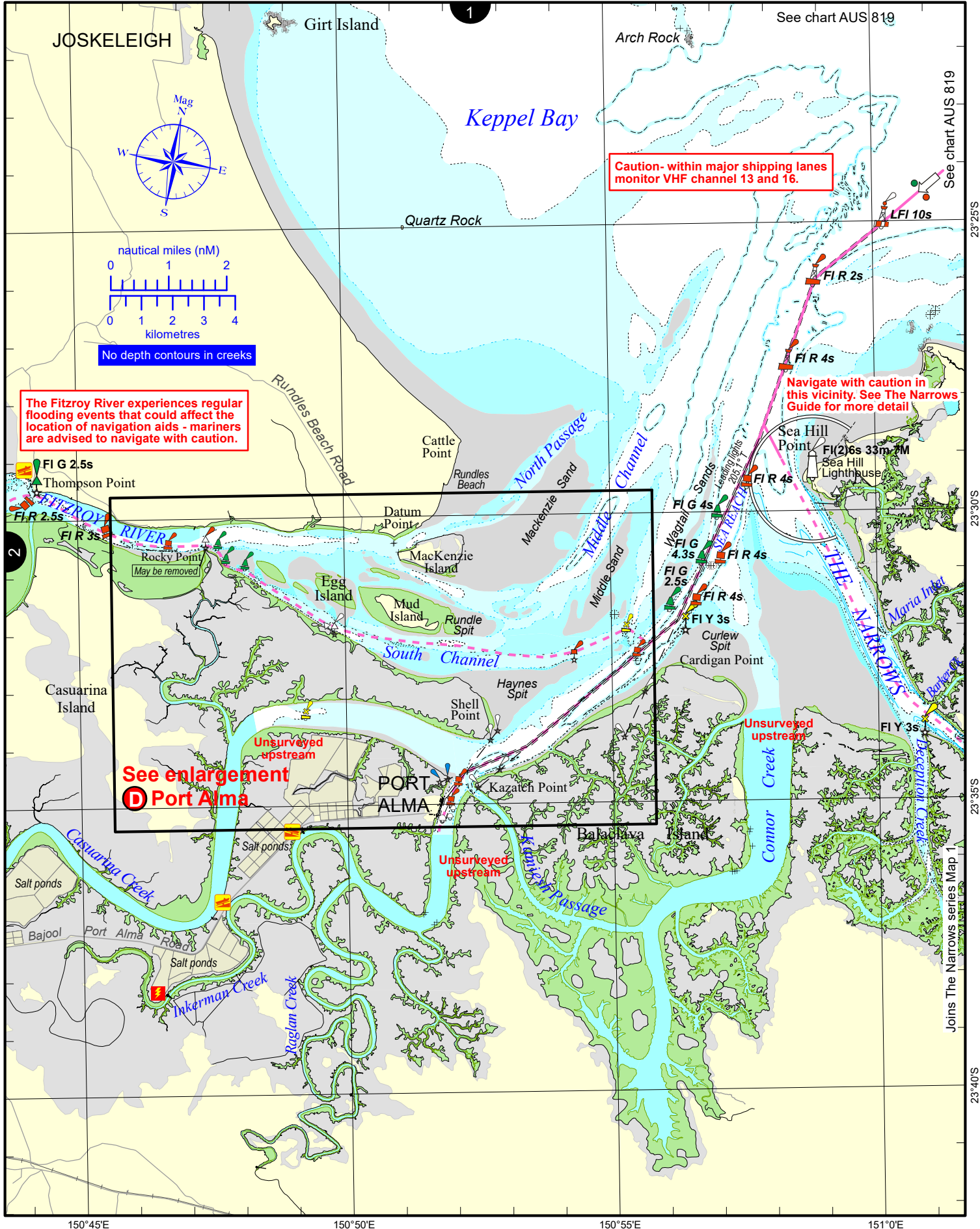




Always keep a proper lookout when boating. Exercise care at all times.  
 Look up and live for power and cable crossings that may not be shown on these maps due to scale or recent construction.  
**CAUTION:** Limited depth contour data is available for part of these waters. (Refer to the Key Sheet for this guide to determine date of survey information).  
 Note that depths may change following floods.  
 Exercise care when travelling outside suggested navigation tracks.  
 © Copyright The State of Queensland 2024  
 Queensland Department of Transport and Main Roads - Maritime Safety Queensland.  
 To reproduce any map within this series, see terms and conditions at Maritime Safety Queensland's website ([www.msq.qld.gov.au](http://www.msq.qld.gov.au))


Nautical information current to 2 September 2024



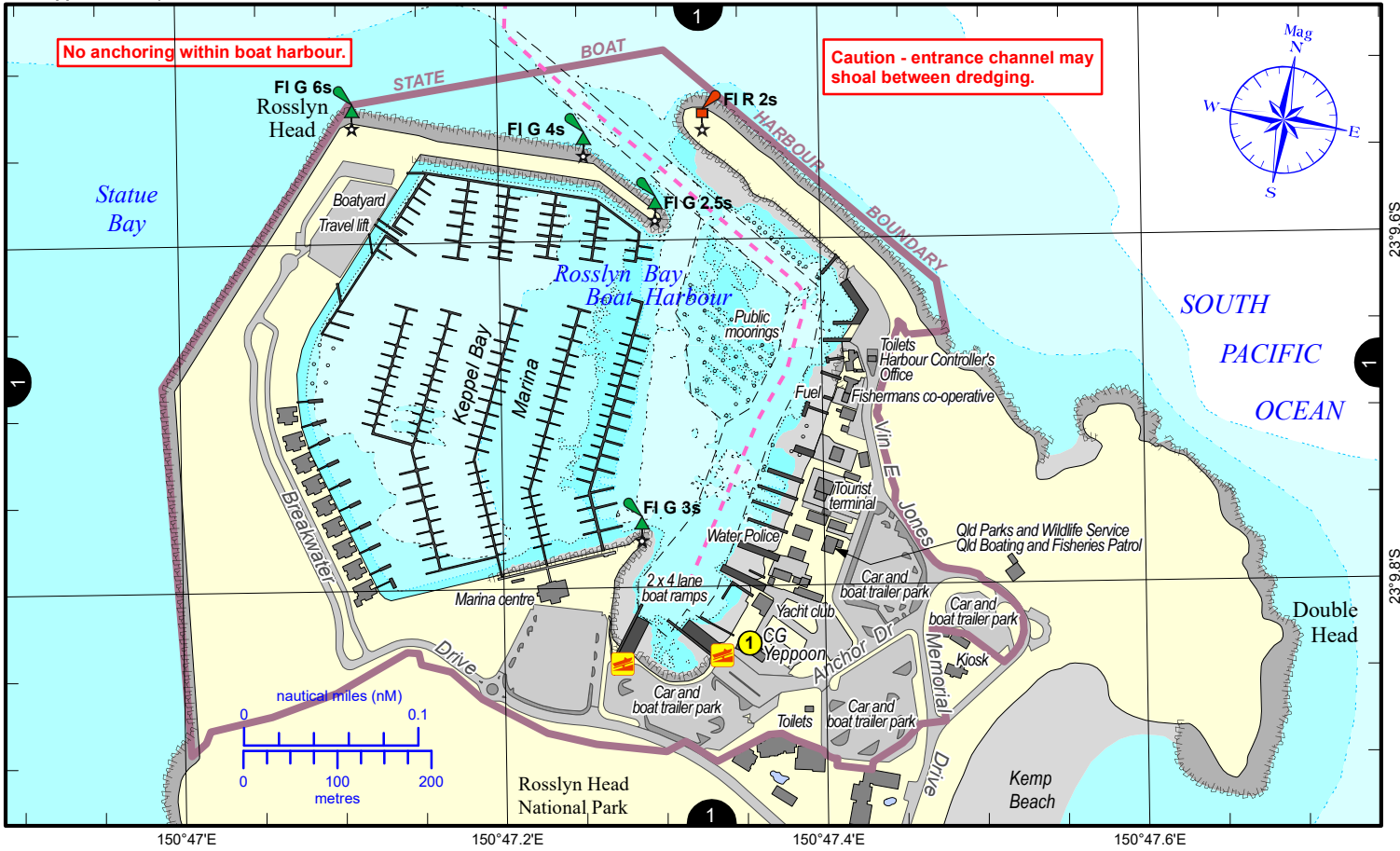
Always keep a proper lookout when boating. Exercise care at all times.  
 Look up and live for power and cable crossings that may not be shown on these maps due to scale or recent construction.  
**CAUTION:** Limited depth contour data is available for part of these waters. (Refer to the Key Sheet for this guide to determine date of survey information).  
 Note that depths may change following floods.  
 Exercise care when travelling outside suggested navigation tracks.  
 © Copyright The State of Queensland 2024  
 Queensland Department of Transport and Main Roads - Maritime Safety Queensland.  
 To reproduce any map within this series, see terms and conditions at Maritime Safety Queensland's website ([www.msq.qld.gov.au](http://www.msq.qld.gov.au))

Nautical information current to 30 September 2024

  
**Queensland Government**

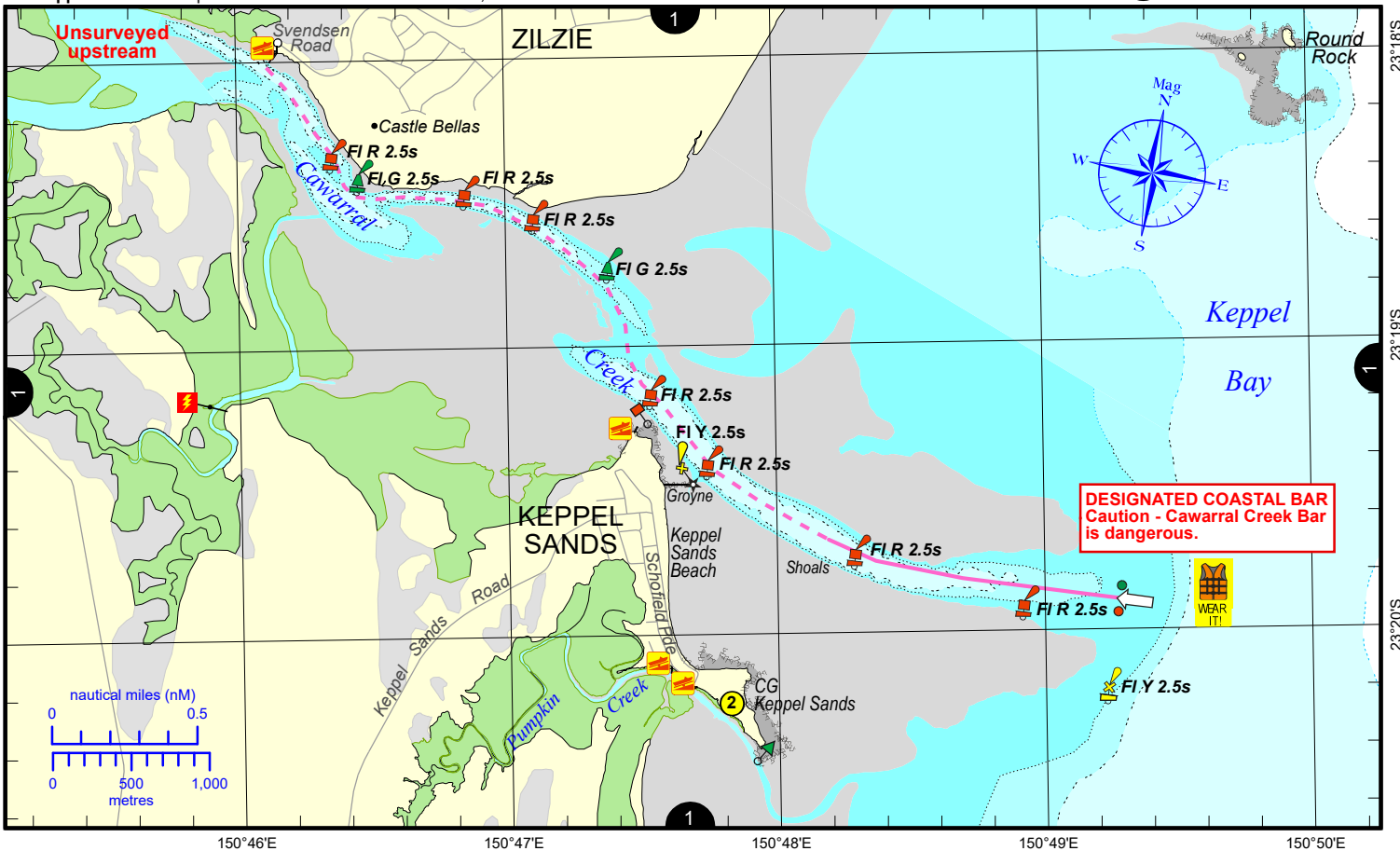
CG Yeppoon: base phone 4933 6600 Fri-Mon 0630-1800, 27MHz 88 86, VHF 16 21 22, MF/HF 2524.

## A Rosslyn Bay Boat Harbour



CG Keppel Sands: base phone 4934 4906 Tue-Thu 0600-1800, VHF 21 22 16 67.

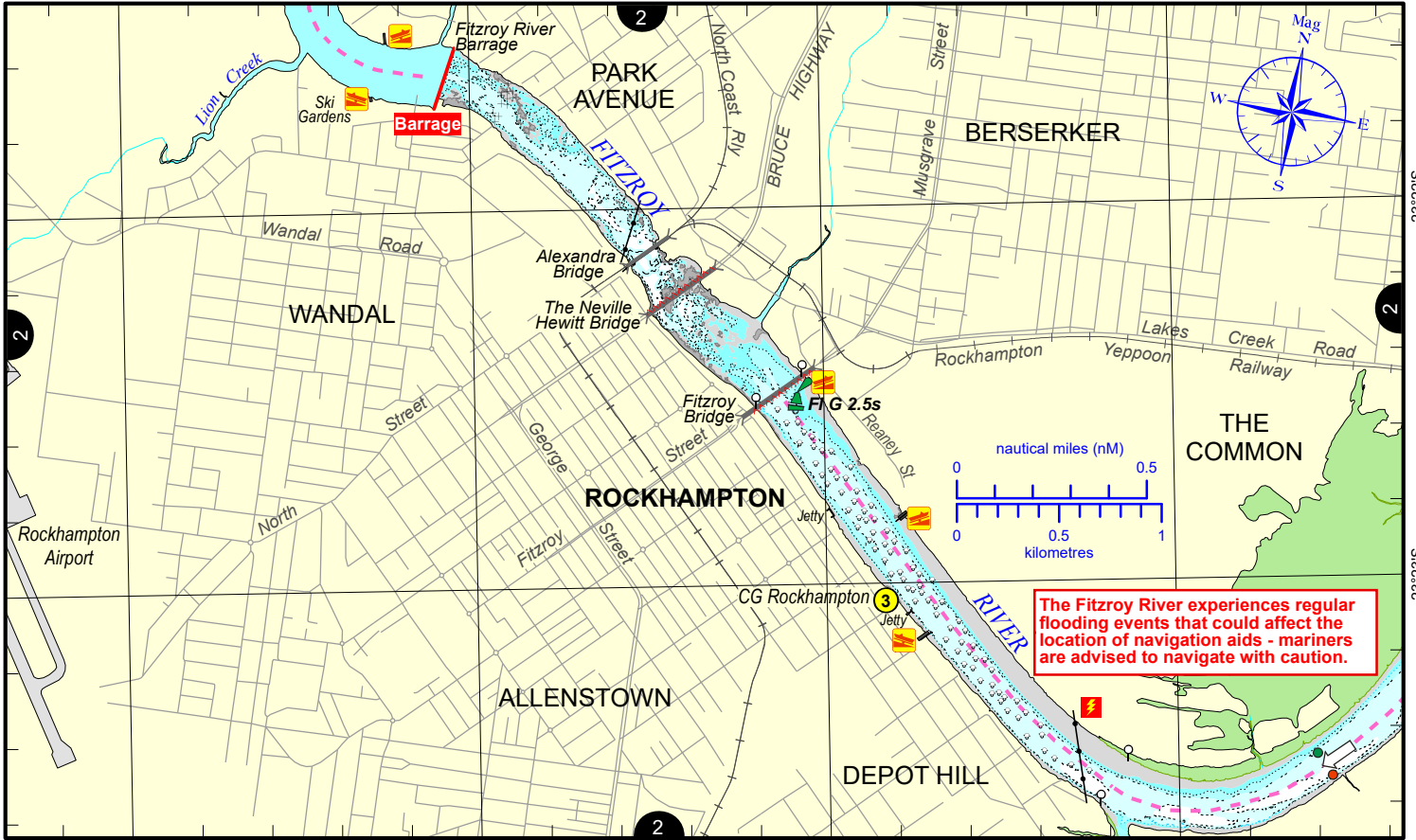
## B Cawarral Creek



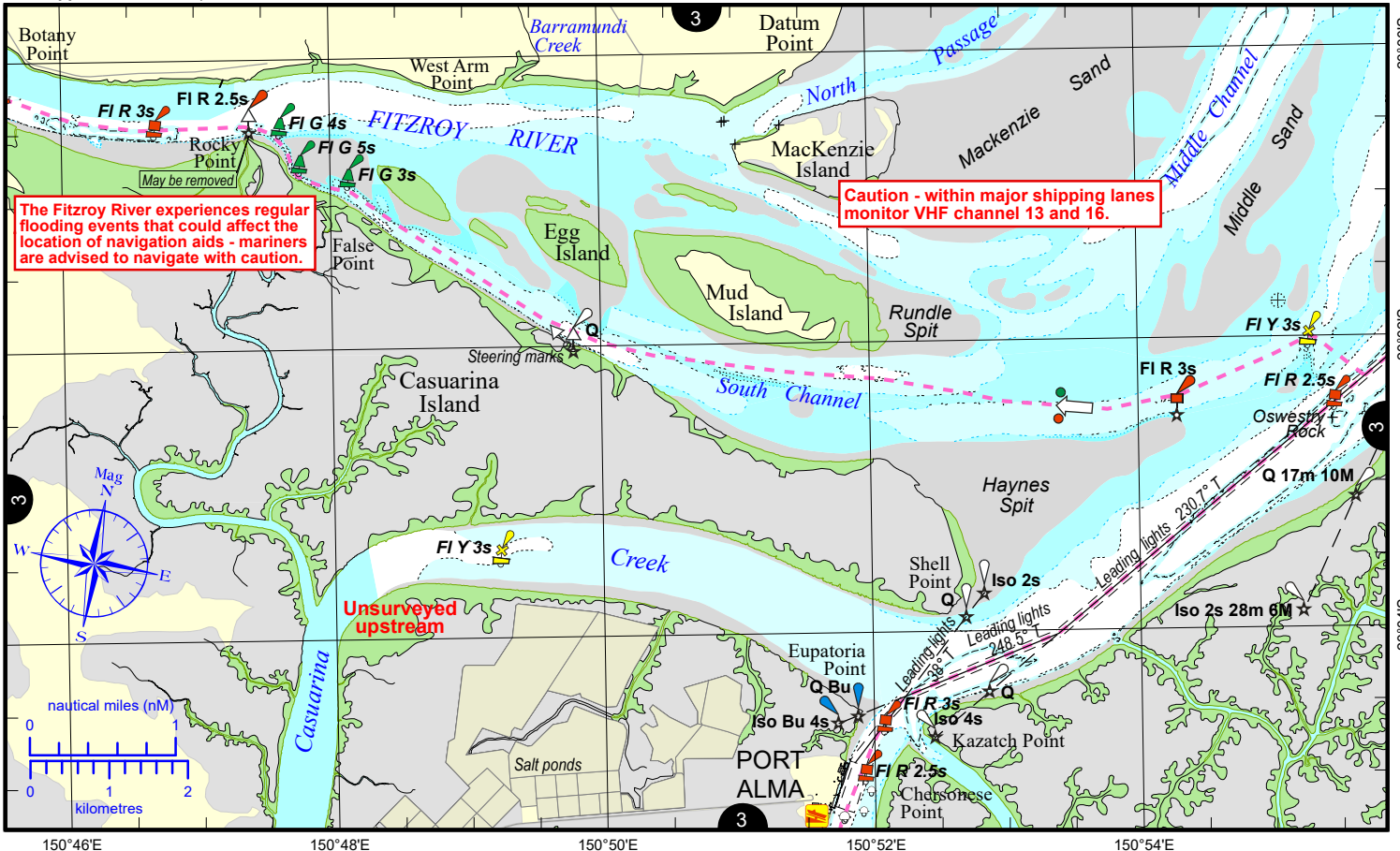
Always keep a proper lookout when boating. Exercise care at all times.  
 Look up and live for power and cable crossings that may not be shown on these maps due to scale or recent construction.  
**CAUTION:** Limited depth contour data is available for part of these waters. (Refer to the Key Sheet for this guide to determine date of survey information).  
 Note that depths may change following floods.  
 Exercise care when travelling outside suggested navigation tracks.  
 © Copyright The State of Queensland 2024  
 Queensland Department of Transport and Main Roads - Maritime Safety Queensland.  
 To reproduce any map within this series, see terms and conditions at Maritime Safety Queensland's website ([www.msq.qld.gov.au](http://www.msq.qld.gov.au))

Nautical information current to 2 September 2024





The Fitzroy River experiences regular flooding events that could affect the location of navigation aids - mariners are advised to navigate with caution.



The Fitzroy River experiences regular flooding events that could affect the location of navigation aids - mariners are advised to navigate with caution.

Caution - within major shipping lanes monitor VHF channel 13 and 16.