

# Beacon to Beacon Guide

## The Narrows



The Narrows, looking north from Graham Creek





**Published by**

Maritime Safety Queensland  
© Copyright The State of Queensland  
(Department of Transport and Main Roads) 2024



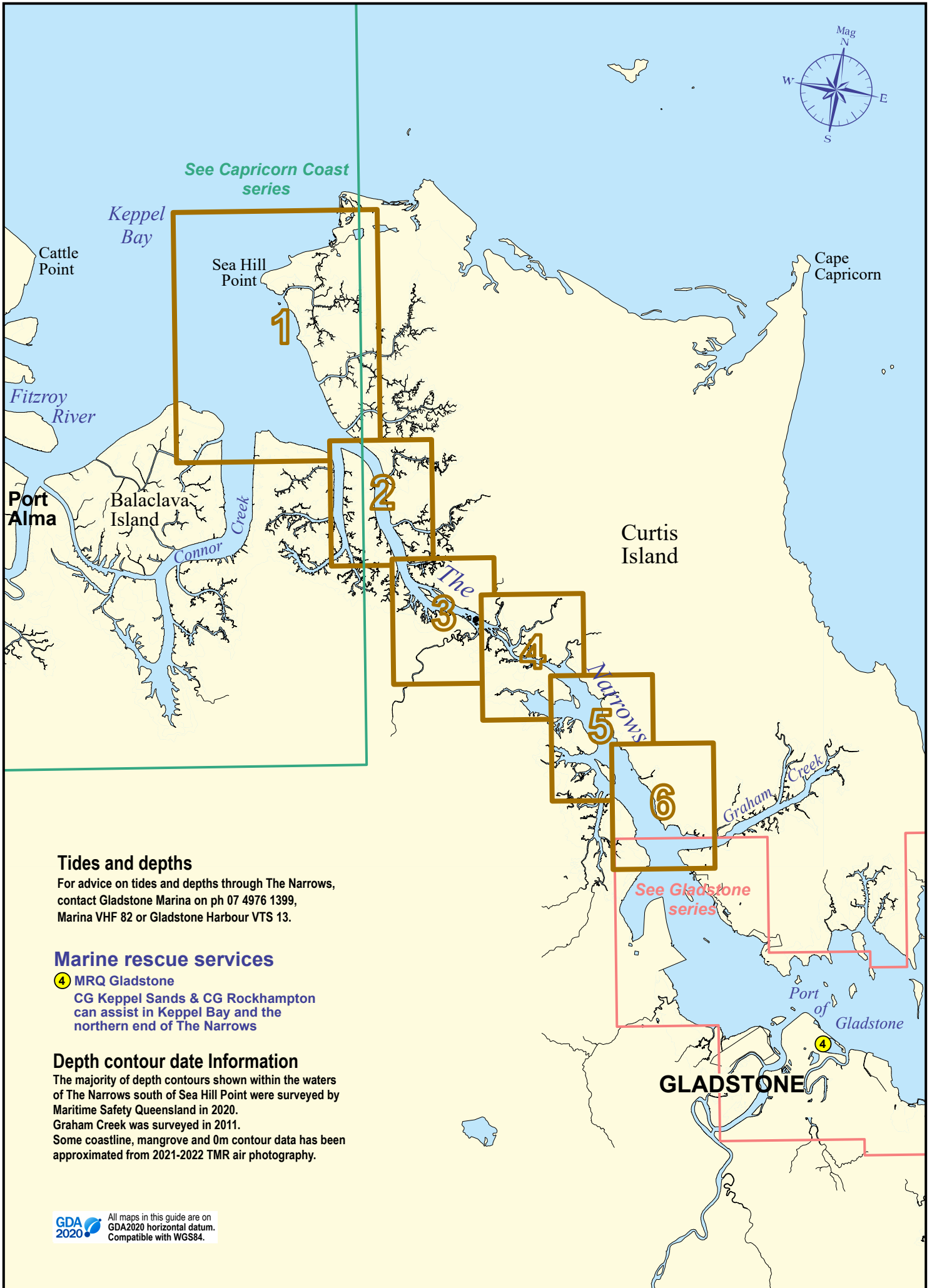
To view a copy of this licence, visit  
<https://creativecommons.org/licenses/by/4.0/>

**For commercial use terms and conditions**

Please visit the Maritime Safety Queensland website at [www.msq.qld.gov.au](http://www.msq.qld.gov.au)

**‘How to’ use this guide**

Use this Beacon to Beacon Guide with the ‘How to’ and legend booklet available from [www.msq.qld.gov.au](http://www.msq.qld.gov.au)



## Tides and depths

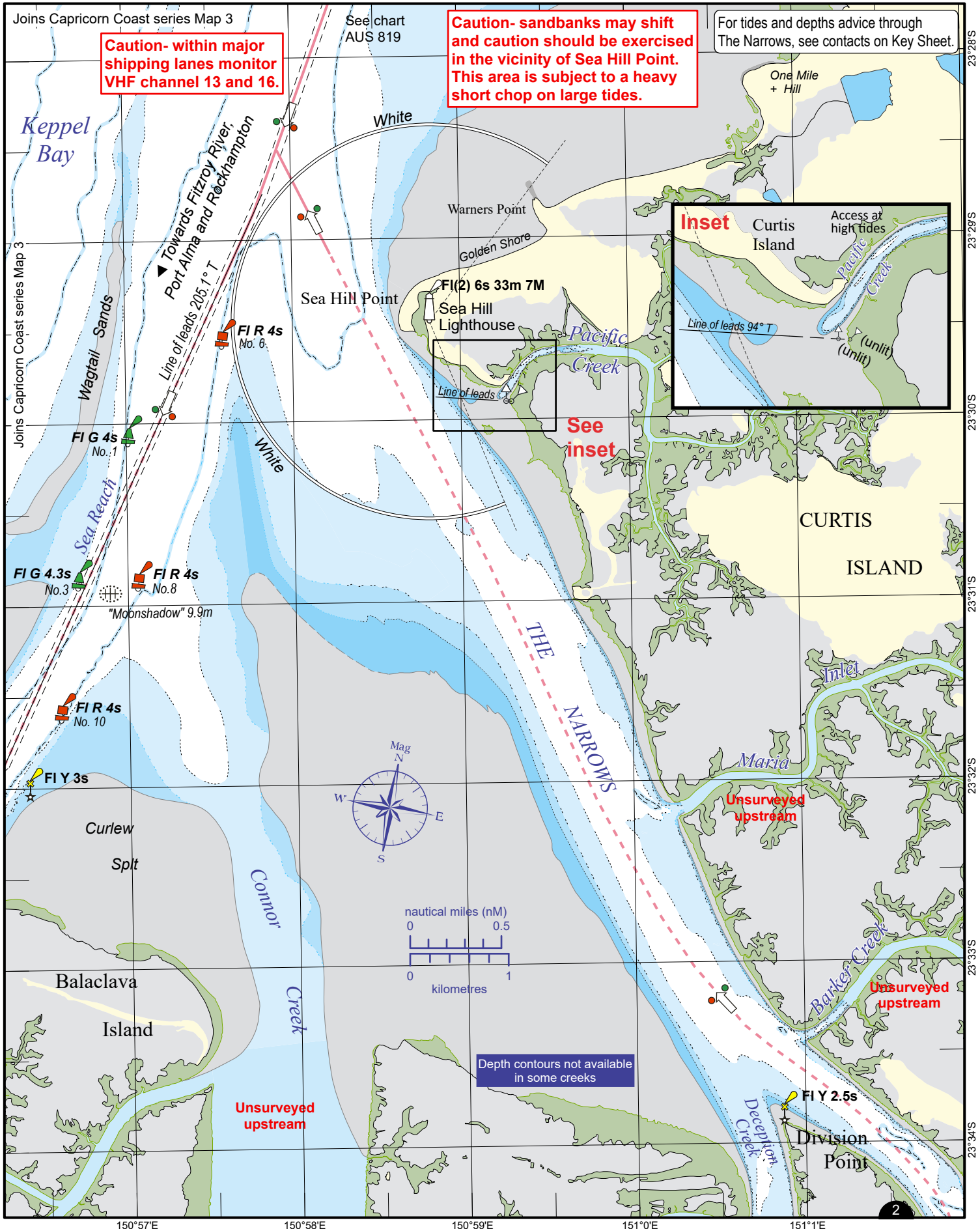
For advice on tides and depths through The Narrows, contact Gladstone Marina on ph 07 4976 1399, Marina VHF 82 or Gladstone Harbour VTS 13.

## Marine rescue services

- ④ MRQ Gladstone  
CG Keppel Sands & CG Rockhampton can assist in Keppel Bay and the northern end of The Narrows

## Depth contour date Information

The majority of depth contours shown within the waters of The Narrows south of Sea Hill Point were surveyed by Maritime Safety Queensland in 2020. Graham Creek was surveyed in 2011. Some coastline, mangrove and 0m contour data has been approximated from 2021-2022 TMR air photography.

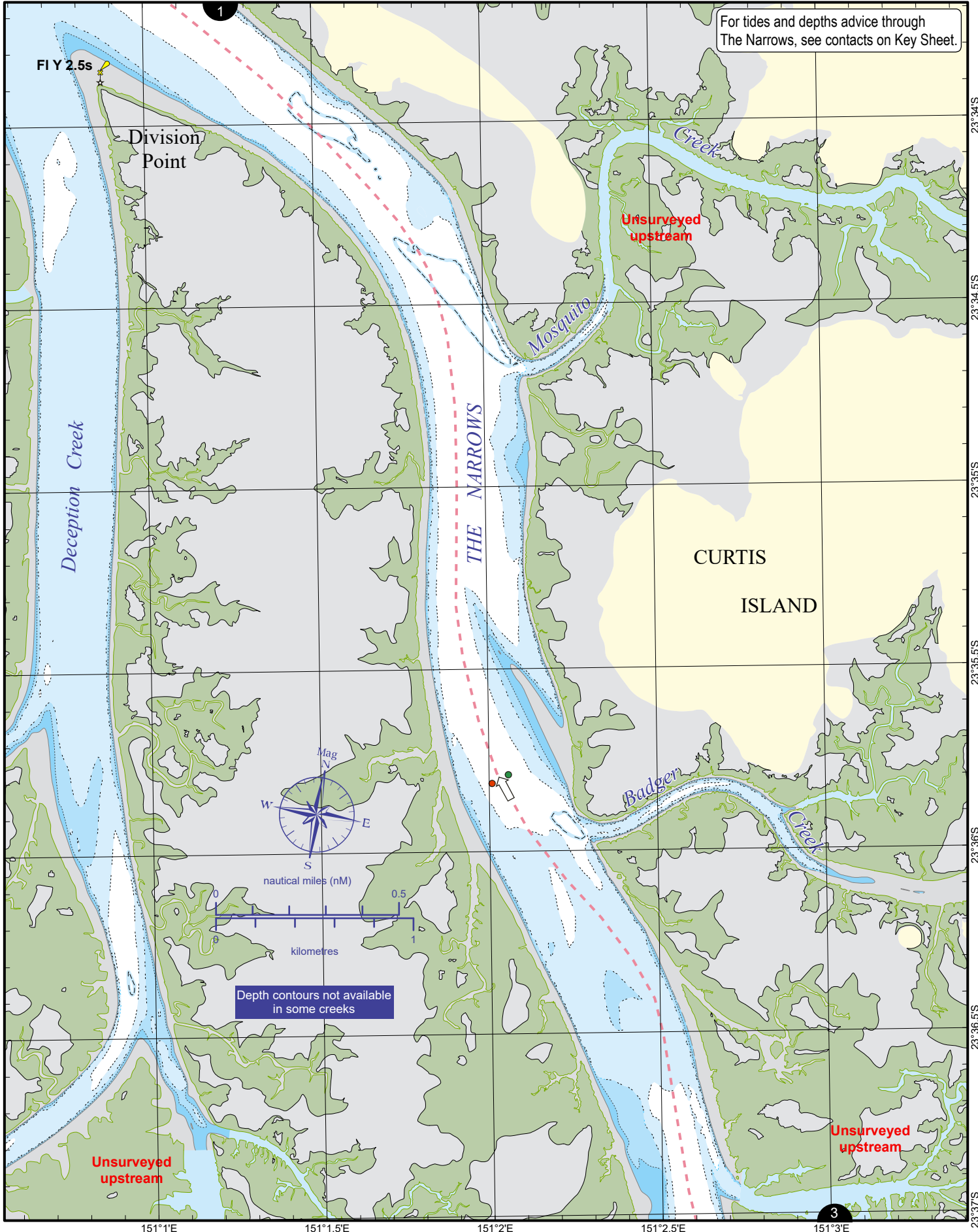


Always keep a proper lookout when boating. Exercise care at all times. Nautical information current to 02 October 2024

Look up and live for power and cable crossings that may not be shown on these maps due to scale or recent construction.

**CAUTION:** Limited depth contour data is available for part of these waters. (Refer to the Key Sheet in this guide to determine date of survey information). Note that depths may change following floods. Exercise care when travelling outside suggested navigation tracks.

© Copyright The State of Queensland 2024  
 Queensland Department of Transport and Main Roads - Maritime Safety Queensland.  
 To reproduce any map within this series, see terms and conditions at Maritime Safety Queensland's website ([www.msq.qld.gov.au](http://www.msq.qld.gov.au))



Always keep a proper lookout when boating. Exercise care at all times.

Nautical information current to 02 October 2024

Look up and live for power and cable crossings that may not be shown on these maps due to scale or recent construction.

**CAUTION:** Limited depth contour data is available for part of these waters. (Refer to the Key Sheet in this guide to determine date of survey information). Note that depths may change following floods. Exercise care when travelling outside suggested navigation tracks.

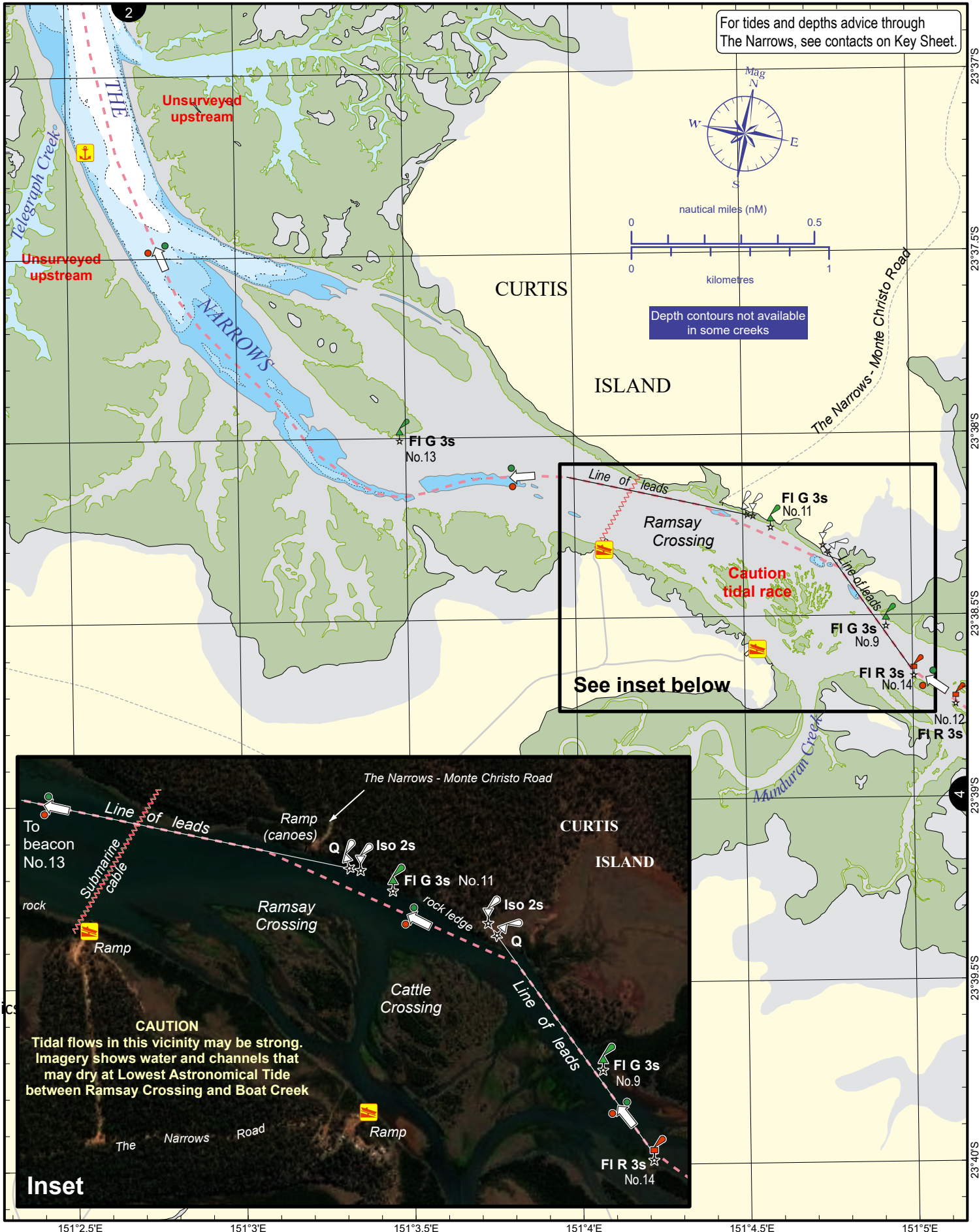


© Copyright The State of Queensland 2024

Queensland Department of Transport and Main Roads - Maritime Safety Queensland.

To reproduce any map within this series, see terms and conditions at Maritime Safety Queensland's website ([www.msq.qld.gov.au](http://www.msq.qld.gov.au))





For tides and depths advice through The Narrows, see contacts on Key Sheet.

Depth contours not available in some creeks

See inset below

**CAUTION**  
Tidal flows in this vicinity may be strong. Imagery shows water and channels that may dry at Lowest Astronomical Tide between Ramsay Crossing and Boat Creek

**Inset**

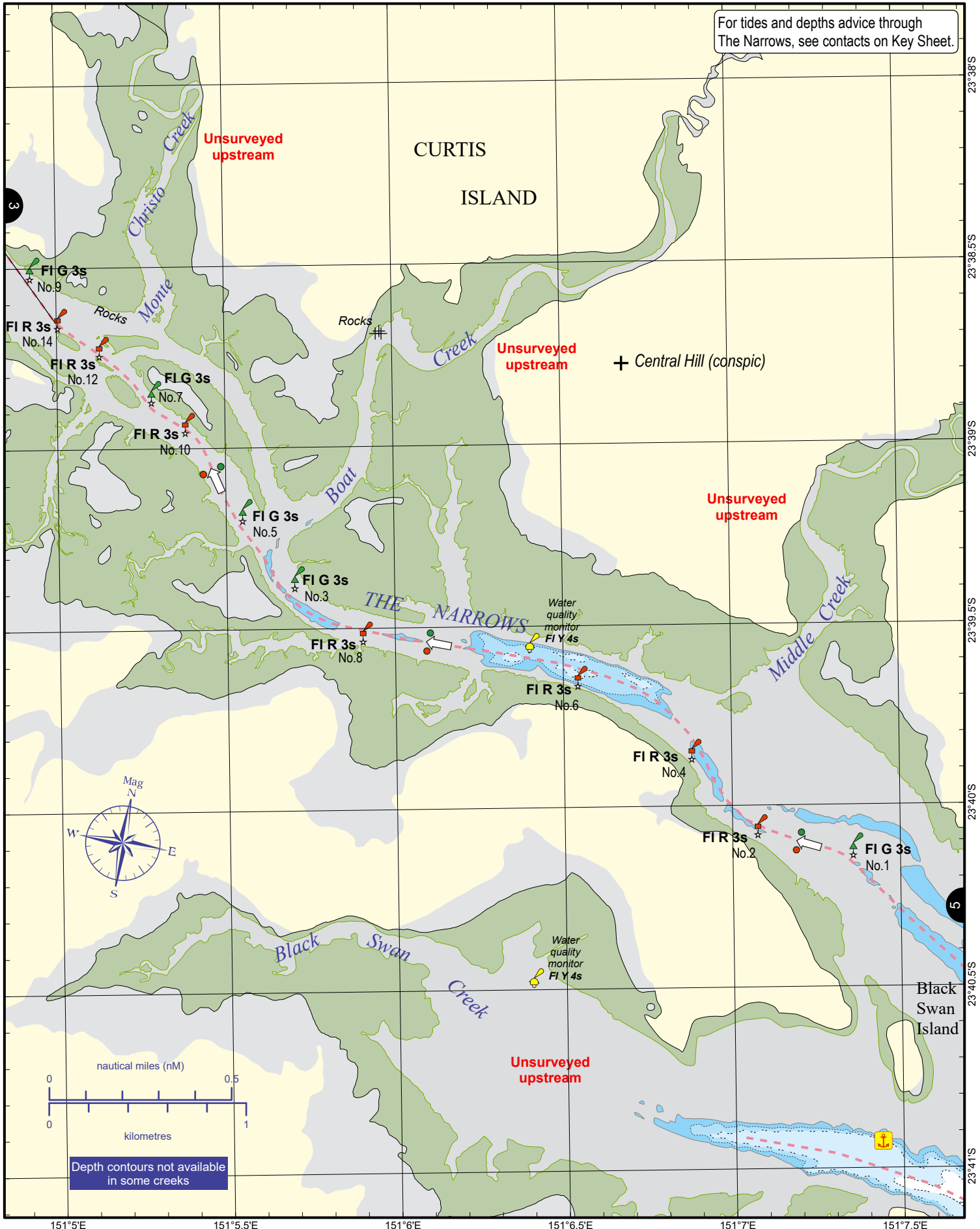
Always keep a proper lookout when boating. Exercise care at all times.

Nautical information current to 02 October 2024

Look up and live for power and cable crossings that may not be shown on these maps due to scale or recent construction.

**CAUTION:** Limited depth contour data is available for part of these waters. (Refer to the Key Sheet in this guide to determine date of survey information). Note that depths may change following floods. Exercise care when travelling outside suggested navigation tracks.





Always keep a proper lookout when boating. Exercise care at all times.

Nautical information current to 02 October 2024

Look up and live for power and cable crossings that may not be shown on these maps due to scale or recent construction.

**CAUTION:** Limited depth contour data is available for part of these waters. (Refer to the Key Sheet in this guide to determine date of survey information). Note that depths may change following floods. Exercise care when travelling outside suggested navigation tracks.



© Copyright The State of Queensland 2024  
Queensland Department of Transport and Main Roads - Maritime Safety Queensland.  
To reproduce any map within this series, see terms and conditions at Maritime Safety Queensland's website ([www.msq.qld.gov.au](http://www.msq.qld.gov.au))





Always keep a proper lookout when boating. Exercise care at all times.

Nautical information current to 02 October 2024

Look up and live for power and cable crossings that may not be shown on these maps due to scale or recent construction.

**CAUTION:** Limited depth contour data is available for part of these waters. (Refer to the Key Sheet in this guide to determine date of survey information). Note that depths may change following floods. Exercise care when travelling outside suggested navigation tracks.

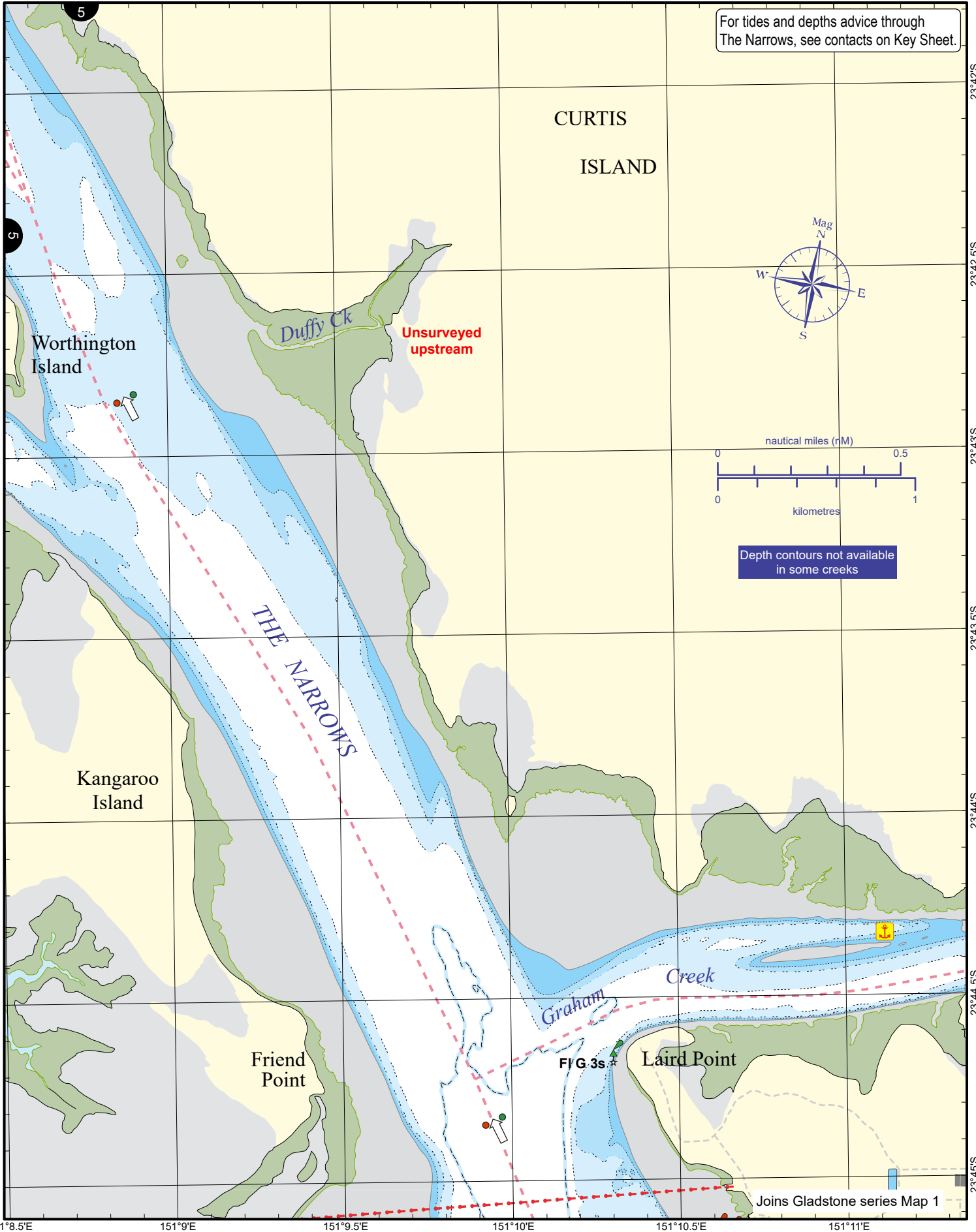


© Copyright The State of Queensland 2024  
Queensland Department of Transport and Main Roads - Maritime Safety Queensland.  
To reproduce any map within this series, see terms and conditions at Maritime Safety Queensland's website ([www.msq.qld.gov.au](http://www.msq.qld.gov.au))





For tides and depths advice through The Narrows, see contacts on Key Sheet.



Always keep a proper lookout when boating. Exercise care at all times. Nautical information current to 02 October 2024

Look up and live for power and cable crossings that may not be shown on these maps due to scale or recent construction.

**CAUTION:** Limited depth contour data is available for part of these waters. (Refer to the Key Sheet in this guide to determine date of survey information). Note that depths may change following floods. Exercise care when travelling outside suggested navigation tracks.

© Copyright The State of Queensland 2024  
 Queensland Department of Transport and Main Roads - Maritime Safety Queensland.  
 To reproduce any map within this series, see terms and conditions at Maritime Safety Queensland's website ([www.msq.qld.gov.au](http://www.msq.qld.gov.au))

Joins Gladstone series Map 1