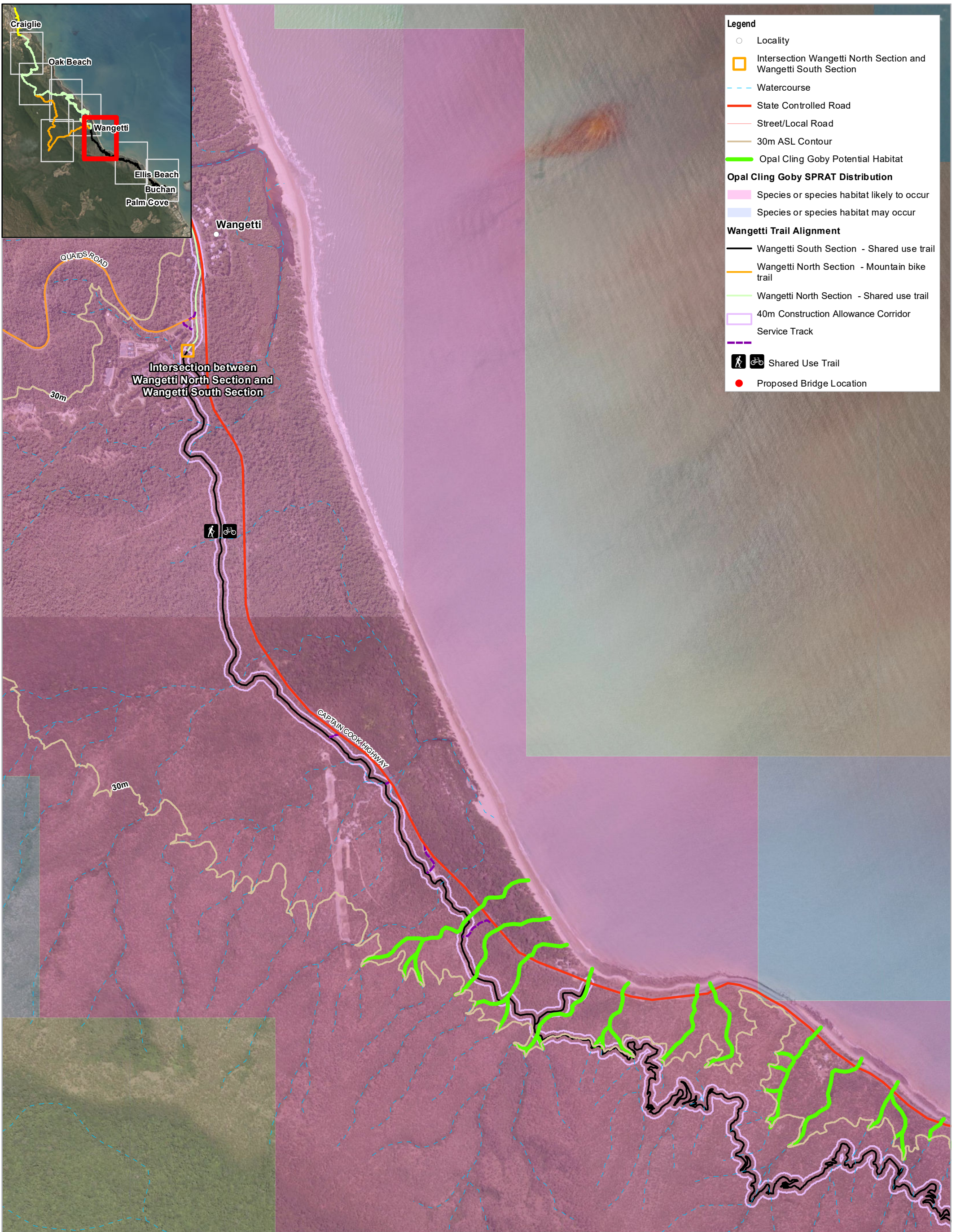
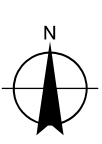
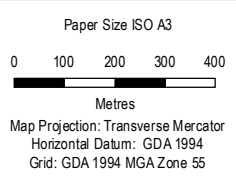


Appendix C – Potential habitat for the opal cling goby (*Stiphodon semoni*) in the vicinity of the Wangetti South Section Trail



Based on or contains data provided by the State of QLD (DNRME) 2020. In consideration of the State permitting use of this data you acknowledge and agree that the State gives no warranty in relation to the data (including accuracy, reliability, completeness, currency or suitability) and accepts no liability (including without limitation, liability in negligence) for any loss, damage or costs (including consequential damage) relating to any use of the data. Data must not be used for marketing or be used in breach of the privacy laws.

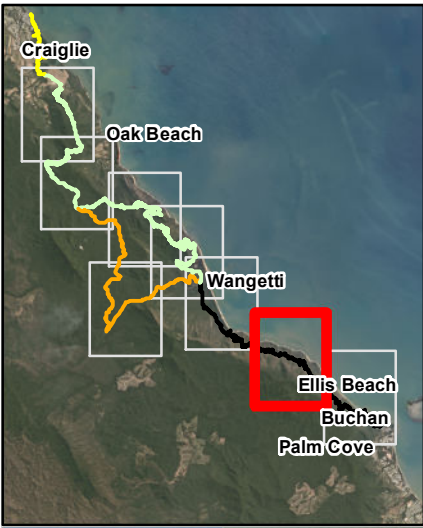


DITID
Environment Assessment Stage 2 Wangetti Trail

**Potential Modelled Habitat for the
opal cling goby (*Stiphodon semoni*)
in the vicinity of the Wangetti Trail - South**

Project No. 41-32458
Revision No. B
Date 1/12/2020

**APPENDIX C
(Sheet 1 of 3)**



Legend

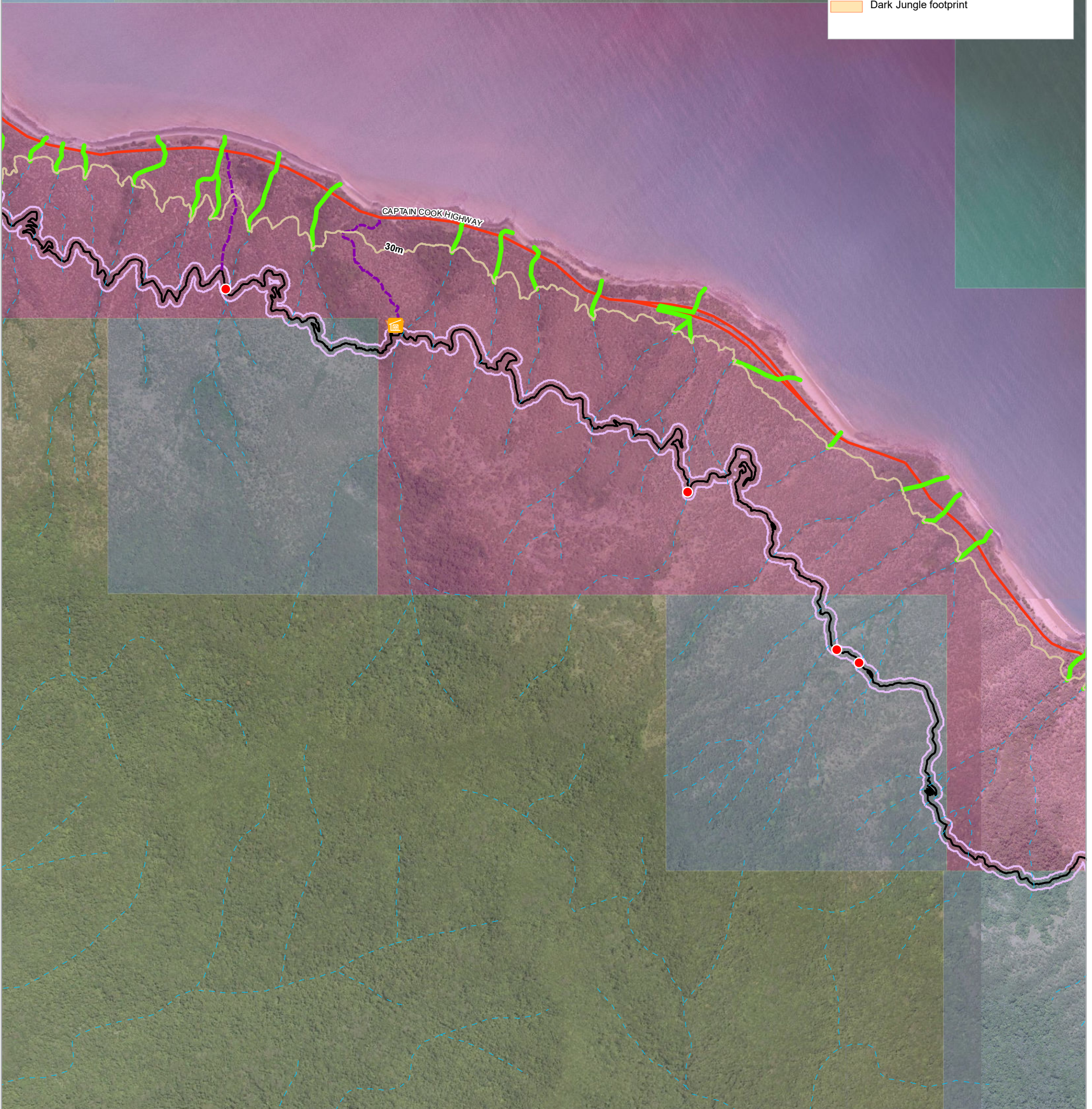
- Watercourse
- State Controlled Road
- 30m ASL Contour
- Opal Cling Goby Potential Habitat

Opal Cling Goby SPRAT Distribution

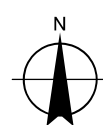
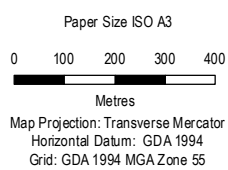
- Species or species habitat likely to occur
- Species or species habitat may occur

Wangetti Trail Alignment

- Wangetti South Section - Shared use trail
- 40m Construction Allowance Corridor
- Service Track
- Proposed Bridge Location
- Dark Jungle footprint



Based on or contains data provided by the State of QLD (DNRME) 2020. In consideration of the State permitting use of this data you acknowledge and agree that the State gives no warranty in relation to the data (including accuracy, reliability, completeness, currency or suitability) and accepts no liability (including without limitation, liability in negligence) for any loss, damage or costs (including consequential damage) relating to any use of the data. Data must not be used for marketing or be used in breach of the privacy laws.

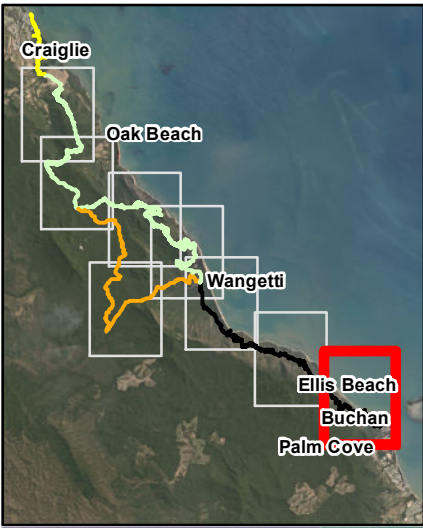


DITID
Environment Assessment Stage 2 Wangetti Trail

**Potential Modelled Habitat for the
opal cling goby (*Stiphodon semoni*)
in the vicinity of the Wangetti Trail - South**

Project No. 41-32458
Revision No. B
Date 1/12/2020

**APPENDIX C
(Sheet 2 of 3)**



Legend

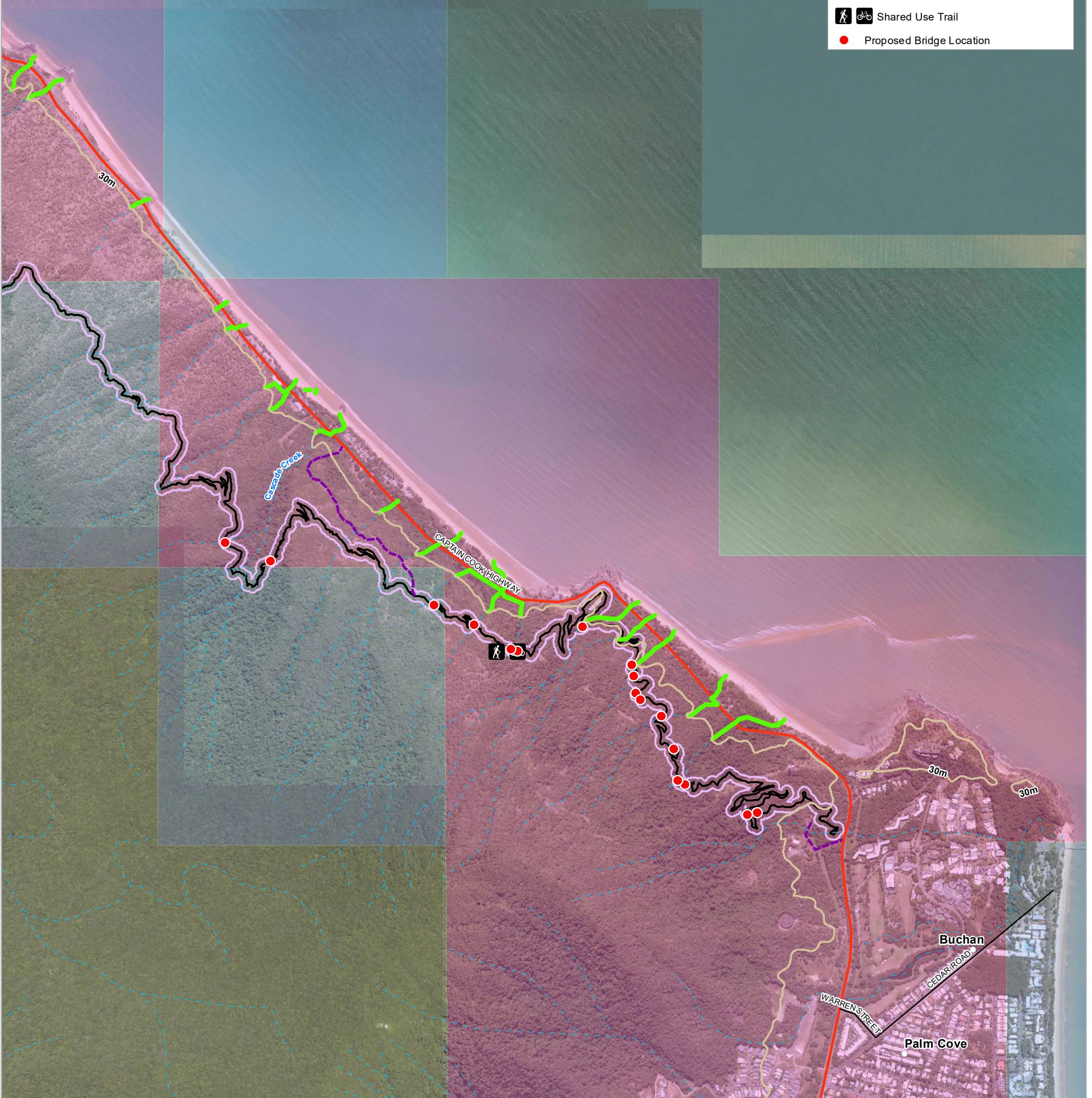
- Locality
- Watercourse
- State Controlled Road
- Local Connector Road
- 30m ASL
- Opal Cling Goby Potential Habitat

Opal Cling Goby SPRAT Distribution

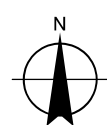
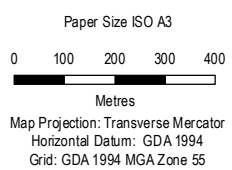
- Species or species habitat likely to occur
- Species or species habitat may occur

Wangetti Trail Alignment

- Wangetti South Section - Shared use trail
- 40m Construction Allowance Corridor
- Service Track
- Shared Use Trail
- Proposed Bridge Location



Based on or contains data provided by the State of QLD (DNRME) 2020. In consideration of the State permitting use of this data you acknowledge and agree that the State gives no warranty in relation to the data (including accuracy, reliability, completeness, currency or suitability) and accepts no liability (including without limitation, liability in negligence) for any loss, damage or costs (including consequential damage) relating to any use of the data. Data must not be used for marketing or be used in breach of the privacy laws.



DITID
Environment Assessment Stage 2 Wangetti Trail

Potential Modelled Habitat for the
opal cling goby (*Stiphodon semoni*)
in the vicinity of the Wangetti Trail - South

Project No. 41-32458
Revision No. B
Date 1/12/2020

APPENDIX C
(Sheet 3 of 3)