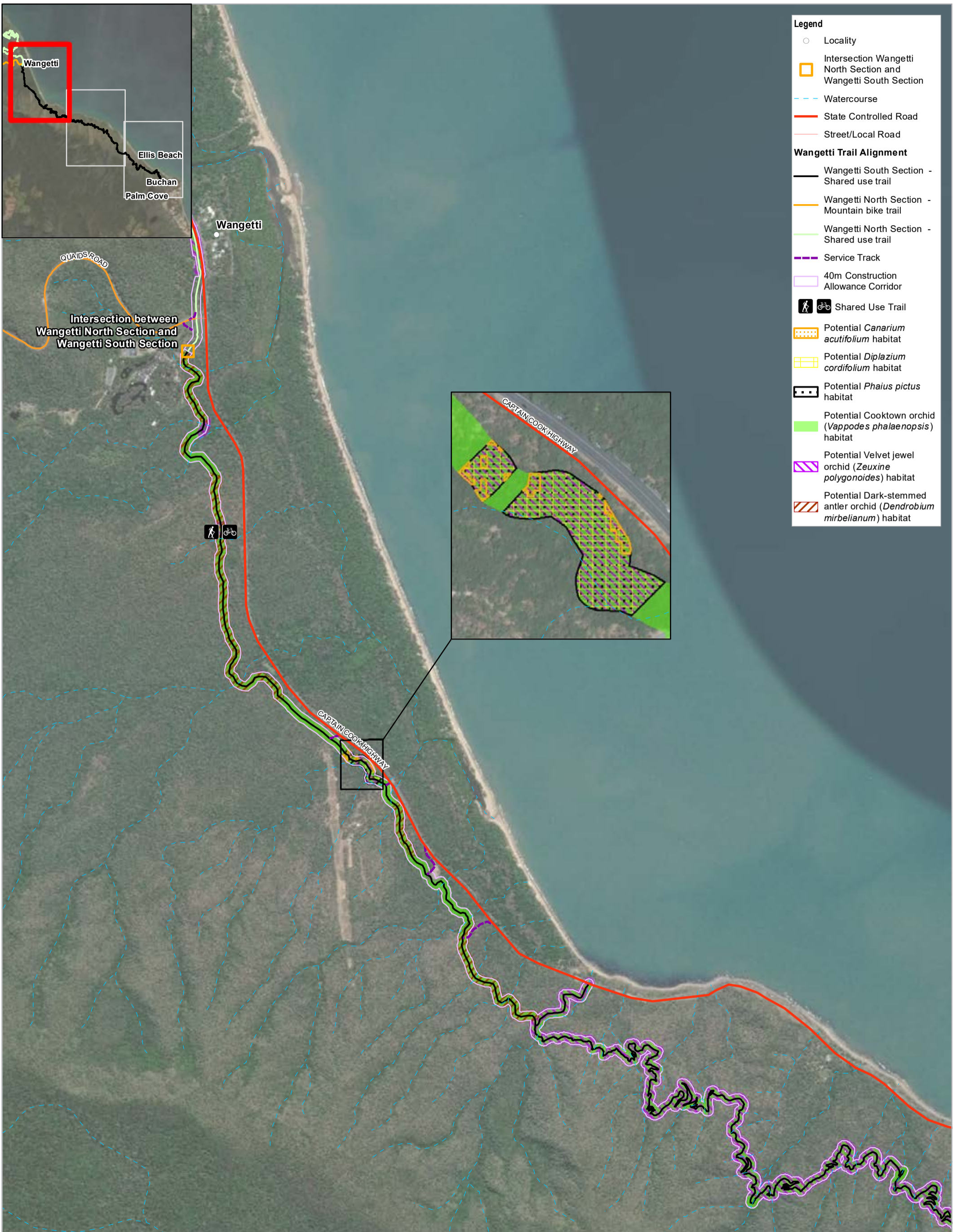
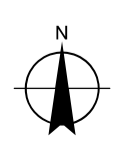
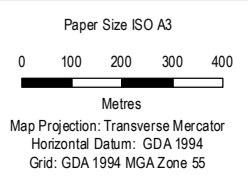


# **Appendix A** – Mapping of the preferred habitat for MNES flora species within Wangetti South Section



- Legend**
- Locality
  - Intersection Wangetti North Section and Wangetti South Section
  - Watercourse
  - State Controlled Road
  - Street/Local Road
- Wangetti Trail Alignment**
- Wangetti South Section - Shared use trail
  - Wangetti North Section - Mountain bike trail
  - Wangetti North Section - Shared use trail
  - Service Track
  - 40m Construction Allowance Corridor
  - 🚶🚴 Shared Use Trail
  - ▨ Potential *Canarium acutifolium* habitat
  - ▨ Potential *Diplazium cordifolium* habitat
  - ▨ Potential *Phaius pictus* habitat
  - ▨ Potential Cooktown orchid (*Vappodes phalaenopsis*) habitat
  - ▨ Potential Velvet jewel orchid (*Zeuxine polygonoides*) habitat
  - ▨ Potential Dark-stemmed antler orchid (*Dendrobium mirbelianum*) habitat

Based on or contains data provided by the State of QLD (DNRME) 2020. In consideration of the State permitting use of this data you acknowledge and agree that the State gives no warranty in relation to the data (including accuracy, reliability, completeness, currency or suitability) and accepts no liability (including without limitation, liability in negligence) for any loss, damage or costs (including consequential damage) relating to any use of the data. Data must not be used for marketing or be used in breach of the privacy laws.

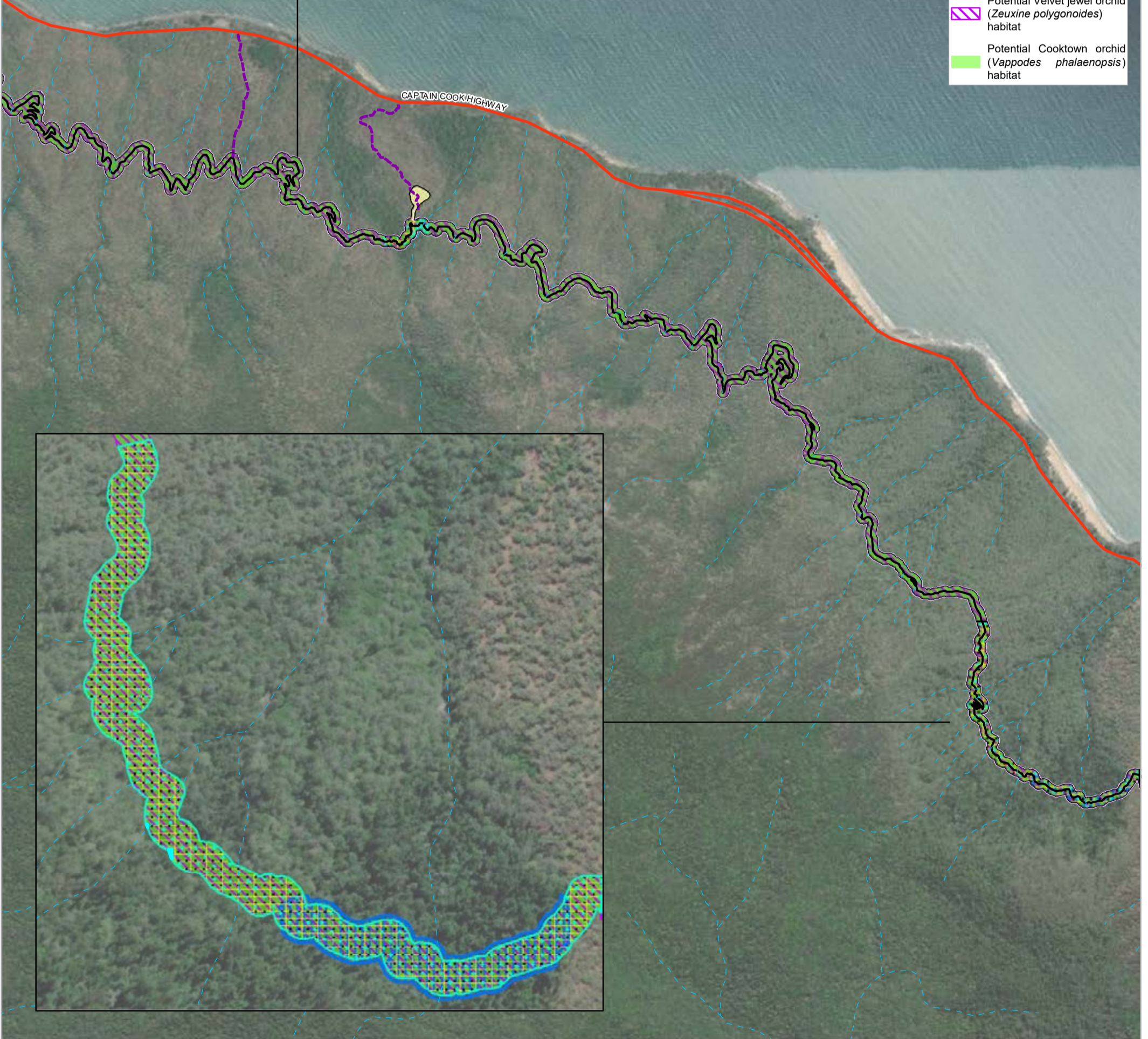
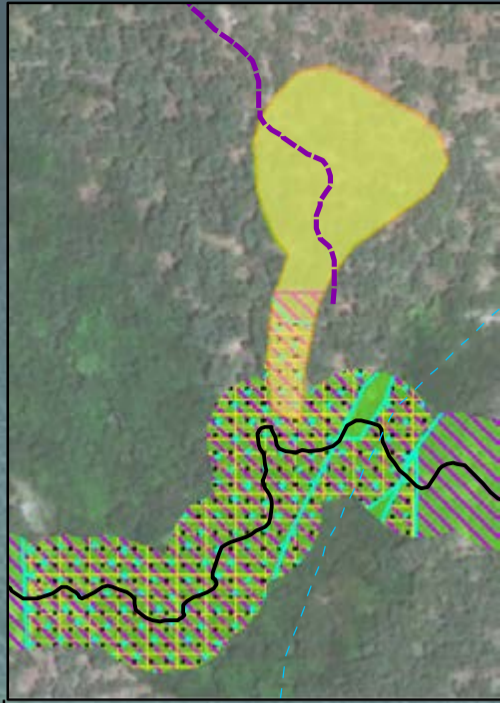
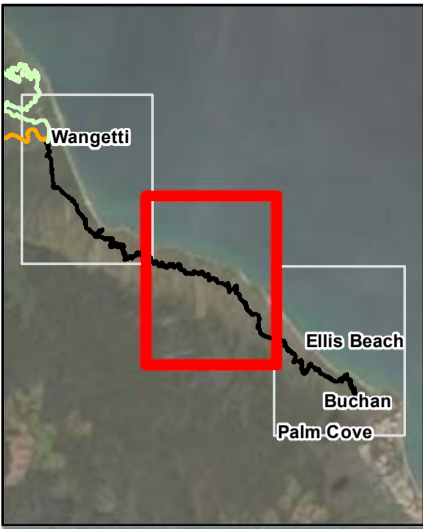


DITID  
Environment Assessment Stage 2 Wangetti Trail

**Wangetti Trail South Section -  
Wangetti to Palm Cove Potential habitat  
for threatened flora species**

Project No. 41-32458  
Revision No. B  
Date 30/04/2021

**Appendix A  
(Sheet 1 of 3)**

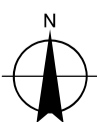


- Legend**
- Watercourse
  - State Controlled Road
- Wangetti Trail Alignment**
- Wangetti South Section - Shared use trail
  - Service Track
  - 40m Construction Allowance Corridor
  - Dark Jungle Footprint
  - Potential Native moth orchid (*Phalaenopsis amabilis* subsp. *rosenstromii*) habitat
  - Potential *Canarium acutifolium* habitat
  - Potential *Phaius pictus* habitat
  - Potential *Diplazium cordifolium* habitat
  - Potential Dwarf butterfly orchid (*Vappodes lithocola*) habitat
  - Potential Velvet jewel orchid (*Zeuxine polygonoides*) habitat
  - Potential Cooktown orchid (*Vappodes phalaenopsis*) habitat



Based on or contains data provided by the State of QLD (DNRME) 2021. In consideration of the State permitting use of this data you acknowledge and agree that the State gives no warranty in relation to the data (including accuracy, reliability, completeness, currency or suitability) and accepts no liability (including without limitation, liability in negligence) for any loss, damage or costs (including consequential damage) relating to any use of the data. Data must not be used for marketing or be used in breach of the privacy laws.

Paper Size ISO A3  
 0 100 200 300 400  
 Metres  
 Map Projection: Transverse Mercator  
 Horizontal Datum: GDA 1994  
 Grid: GDA 1994 MGA Zone 55

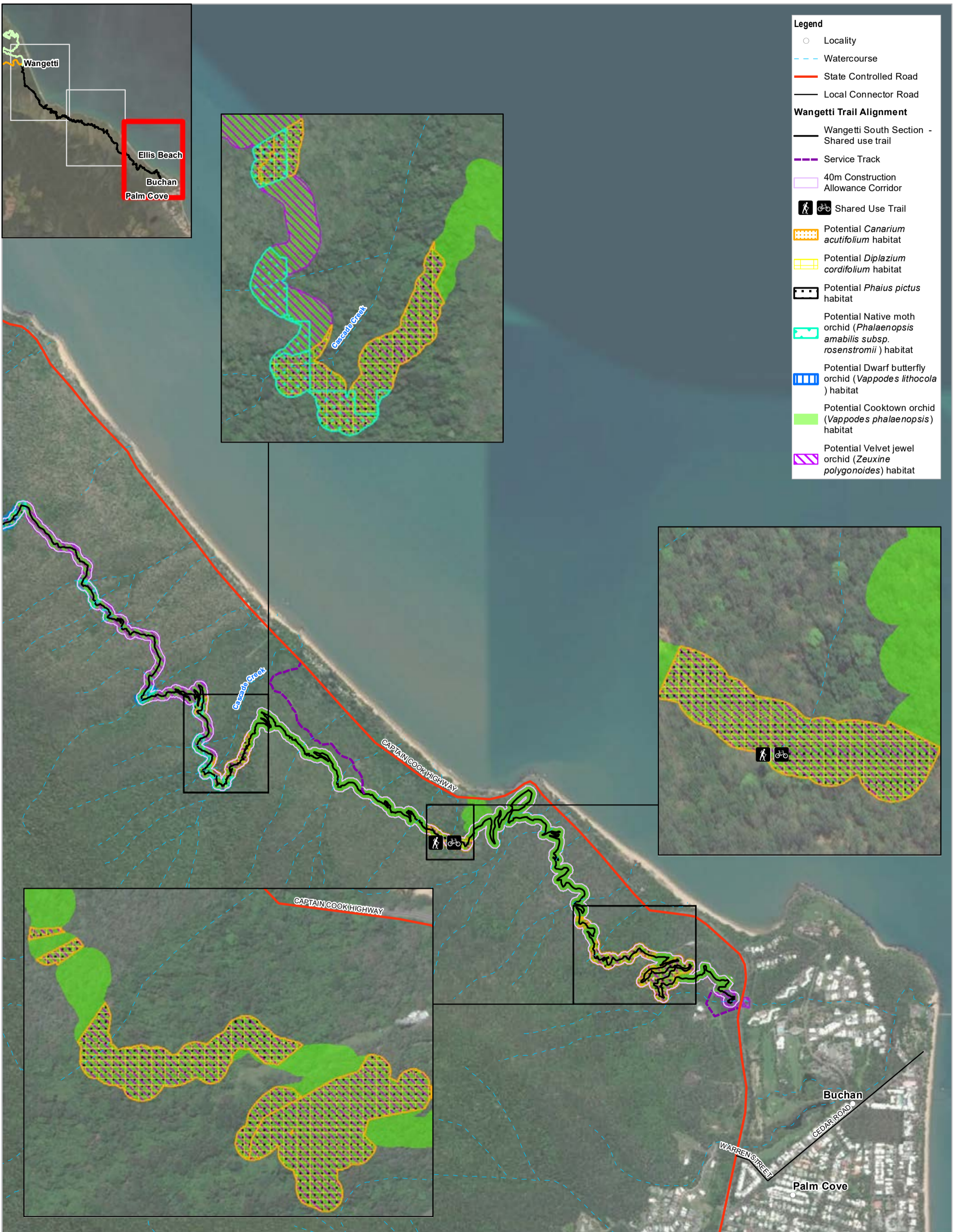


DITID  
 Environment Assessment Stage 2 Wangetti Trail

**Wangetti Trail South Section -  
 Wangetti to Palm Cove Potential habitat  
 for threatened flora species**

Project No. 41-32458  
 Revision No. B  
 Date 30/04/2021

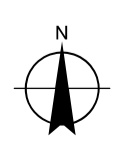
**Appendix A  
 (Sheet 2 of 3)**



- Legend**
- Locality
  - Watercourse
  - State Controlled Road
  - Local Connector Road
- Wangetti Trail Alignment**
- Wangetti South Section - Shared use trail
  - Service Track
  - 40m Construction Allowance Corridor
  - 🚶🚲 Shared Use Trail
  - ▨ Potential *Canarium acutifolium* habitat
  - ▨ Potential *Diplazium cordifolium* habitat
  - ▨ Potential *Phaius pictus* habitat
  - ▨ Potential Native moth orchid (*Phalaenopsis amabilis* subsp. *rosenstromii*) habitat
  - ▨ Potential Dwarf butterfly orchid (*Vappodes lithocola*) habitat
  - ▨ Potential Cooktown orchid (*Vappodes phalaenopsis*) habitat
  - ▨ Potential Velvet jewel orchid (*Zeuxine polygonoides*) habitat

Based on or contains data provided by the State of QLD (DNRME) 2020. In consideration of the State permitting use of this data you acknowledge and agree that the State gives no warranty in relation to the data (including accuracy, reliability, completeness, currency or suitability) and accepts no liability (including without limitation, liability in negligence) for any loss, damage or costs (including consequential damage) relating to any use of the data. Data must not be used for marketing or be used in breach of the privacy laws.

Paper Size ISO A3  
 0 100 200 300 400  
 Metres  
 Map Projection: Transverse Mercator  
 Horizontal Datum: GDA 1994  
 Grid: GDA 1994 MGA Zone 55



DITID  
 Environment Assessment Stage 2 Wangetti Trail  
**Wangetti Trail South Section -  
 Wangetti to Palm Cove Potential habitat  
 for threatened flora species**

Project No. 41-32458  
 Revision No. B  
 Date 30/04/2021

**Appendix A  
 (Sheet 3 of 3)**