

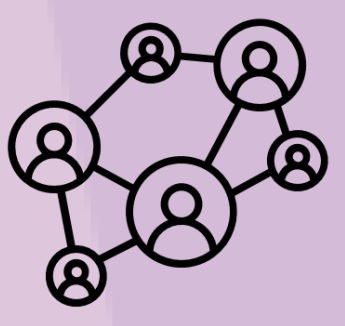
Domestic and Family Violence Common Risk and Safety Framework (CRASF)

The CRASF is a whole-of-system framework which underpins the delivery of integrated service responses for people impacted by domestic and family violence (DFV). It facilitates a shared understanding and common approach to DFV across all elements of the integrated service system.

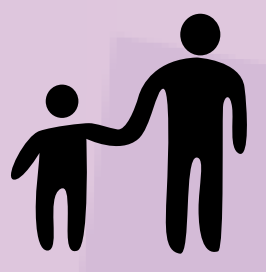
Guiding principles



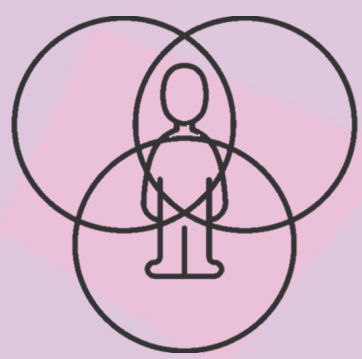
We are committed to a shared understanding of risk.



We support the self-determination of victim-survivors.



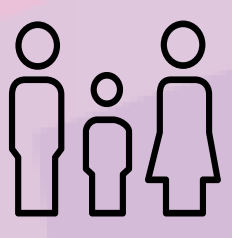
We recognise children and young people as victim-survivors in their own right and commit to meeting their unique needs.



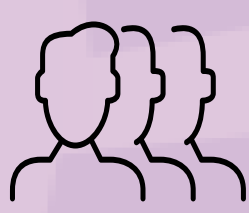
We adopt a culturally appropriate and intersectional approach



We recognise DFV as a pattern of abuse.



We account for broader types of family violence.



We adopt an integrated approach to risk assessment and management.

Risk assessment and safety planning tools

Level 1 - Screening Tool

- Designed to be used by any person who may come into contact with someone who may have experienced or be experiencing DFV.
- Includes an Adult DFV Routine Screening Tool and a Child DFV Routine Screening Tool.
- Provides three simple steps for identifying whether DFV may be occurring and how to respond:
 - 1) Scan for signs.
 - 2) Ask questions to identify if DFV is occurring.
 - 3) Act to support referrals and immediate safety.

Level 2 - Risk Assessment Tool

- Designed to be used by specialist DFV practitioners, selected government workers, and other professionals with a role in responded to DFV.
- Includes Risk Assessment and Safety Planning.
- Supports users to assess the level of risk to a victim-survivor and manage the risk posed.

Level 3 - Dynamic Risk Assessment and Safety Management Tool

- Designed specifically for use by multi-agency response teams who have a strong understanding of DFV-informed practice and experience working in DFV.
- Supports agencies participating in the multi-agency team to bring information together to build a more detailed view of the risk presented to a victim-survivor.

Where to from here?



A series of online learning resources have been developed to support your learning of the CRASF. You may visit the Integrated Service Systems Training Hub (the Hub) for more information.

The Training Hub is available at <https://www.publications.qld.gov.au/dataset/iss-training-hub>.

Why was the CRASF reviewed?

Version 1 of the CRASF was developed in 2017, as part of the Queensland Government's response to the *Not Now, Not Ever* report. Version 1 of the CRASF was initially only available in funded integrated service response or High Risk Team locations, and developed with the intention that it would be reviewed and amended over time to incorporate new learning and reflect contemporary best practice.

The revised CRASF, published in 2022, incorporates new learning and findings from relevant reports, including the independent evaluation undertaken by Griffith University's Griffith Criminology Institute in 2019. The revised CRASF reflects contemporary understandings of DFV, including risks and guidance around coercive control and other factors such as technology-facilitated abuse. It has a greater focus on the victim-survivor's voice, and provides guidance on working with victim-survivors from priority population groups.

The CRASF review process

In 2021, the Office for Women and Violence Prevention (OWVP), Department of Justice and Attorney-General (DJAG), engaged Ernst and Young to lead the CRASF review. This included a comprehensive research and evaluation process in consultation with leading DFV academics.

An extensive consultation process was undertaken with the DFV sector and integrated service response stakeholders, which included focus group sessions with practitioners, interviews with victim survivors, and a series of consults and drop-in sessions. In addition, a Virtual Practice Reference Group was established, consisting of a broad range of practitioners and managers from across the DFV system. Validation testing was undertaken, and data was gathered from practitioners using the tools against closed case files and assessing practitioners' views.

This thorough and extensive review process led to a number of enhancements to the revised CRASF, reflecting contemporary understandings, best practice and an evidence-based approach for DFV risk assessments and safety planning.

What are the benefits of using the revised CRASF?

The revised CRASF is designed for use across all elements of the service system, and is a best practice, validated tool, developed through a co-design process with stakeholders across Queensland's DFV integrated service system.

As identified in the Women's Safety and Justice Taskforce report, *Hear Her Voice - Report 1: Addressing coercive control and domestic and family violence in Queensland*, Queensland's integrated service response will be strengthened by the use of a consistent, whole-of-system risk assessment framework, with all parts of the DFV and justice system aligned with the framework.

The CRASF guides practice across all three levels of response, which is vital for a strong and cohesive integrated service system. Specifically for multi-agency high risk response teams, the Level 3 tools have been designed to facilitate structured multi-agency meetings and information sharing.

What training is available?

The Integrated Service Systems Training Hub (the Hub) is a one-stop hub for all training and resources relating to the CRASF and integrated service responses. The Hub includes a series of resources to support users to adopt the CRASF and deliver good practice integrated service responses to DFV.

Resources include videos and self-paced, interactive training modules, fact sheets, frequently asked questions, a CRASF introduction webinar, and video on information sharing.

Access the Integrated Service Systems Training Hub at <https://www.publications.qld.gov.au/dataset/iss-training-hub>.

For further information on the revised CRASF, please visit www.justice.qld.gov.au/dfvcommonrisksafetyframework or email DFVintegratedservices@justice.qld.gov.au.