

ACID SULFATE HAZARD BAJOOL - PORT ALMA AREA

Scale 1:50 000



Projection: Universal Transverse Mercator (MGA Zone 56)
Horizontal Datum: Geocentric Datum of Australia (GDA94)
Note: This map is GDA compliant

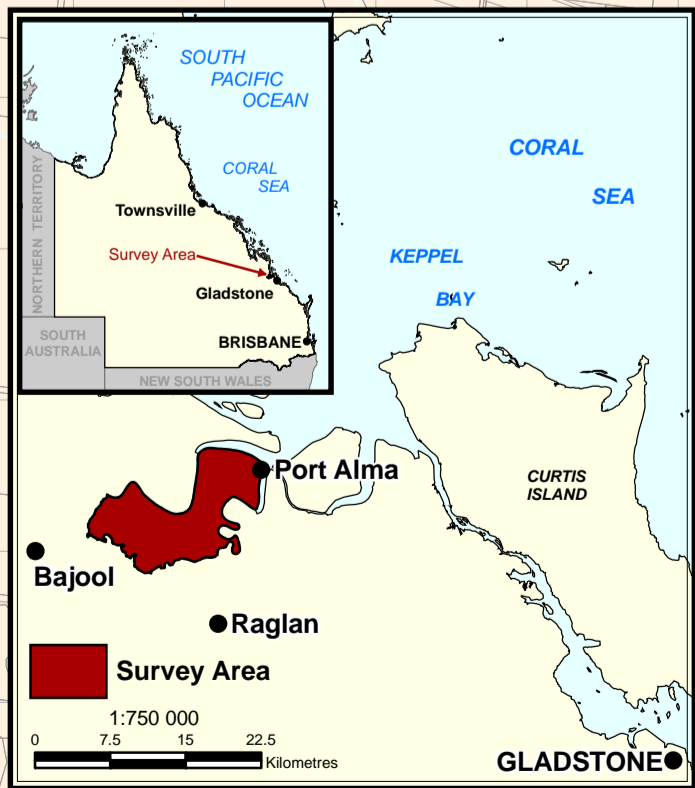
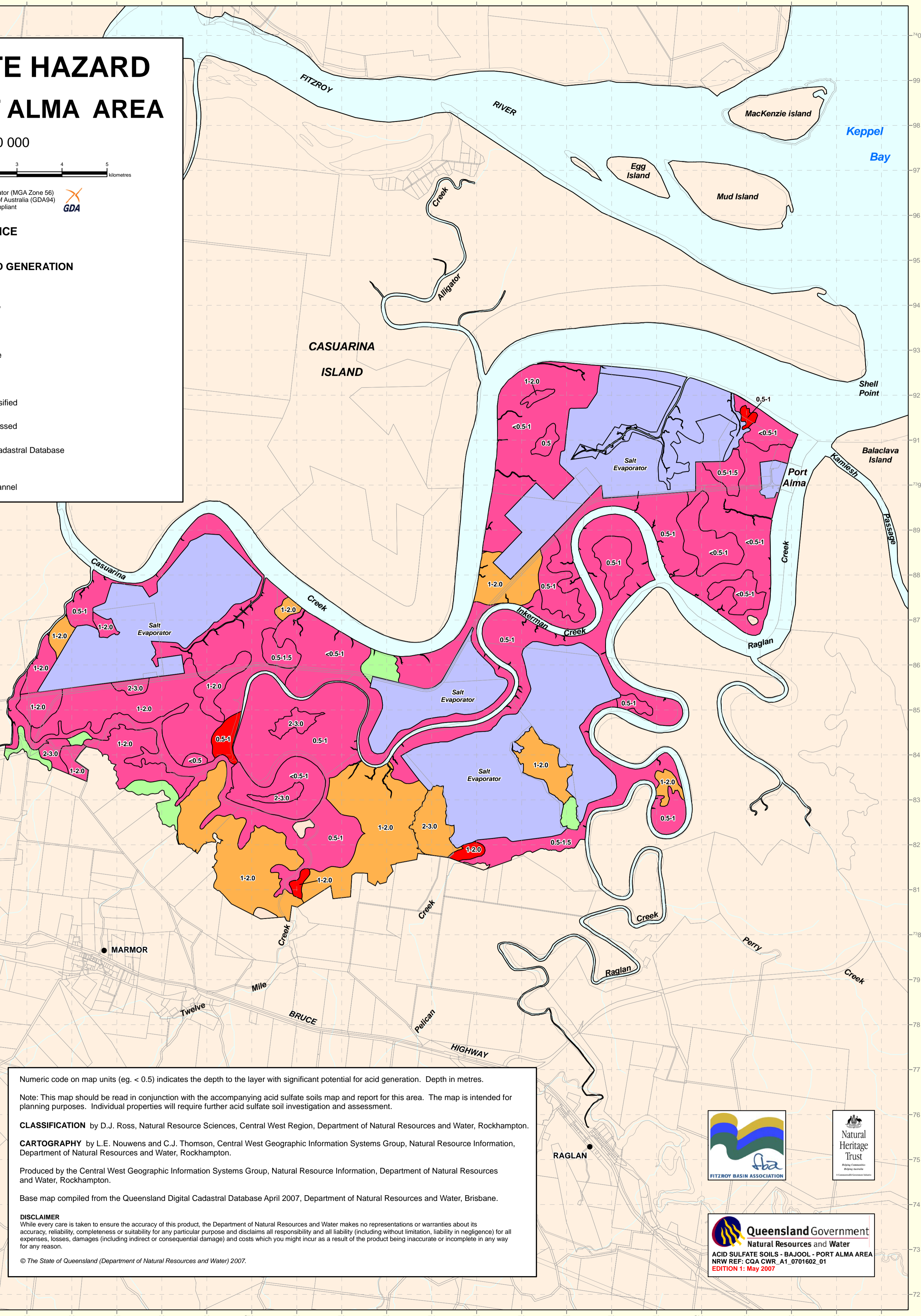
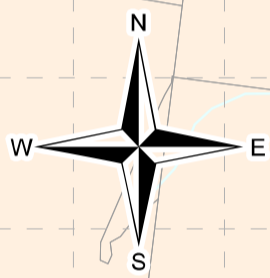


REFERENCE

POTENTIAL FOR ACID GENERATION

CODE	CLASS
	Very Low
	Low
	Moderate
	High
	Not Classified
	Not Assessed

	Digital Cadastral Database
	Creek
	Tidal Channel



Numerical code on map units (eg. < 0.5) indicates the depth to the layer with significant potential for acid generation. Depth in metres.

Note: This map should be read in conjunction with the accompanying acid sulfate soils map and report for this area. The map is intended for planning purposes. Individual properties will require further acid sulfate soil investigation and assessment.

CLASSIFICATION by D.J. Ross, Natural Resource Sciences, Central West Region, Department of Natural Resources and Water, Rockhampton.

CARTOGRAPHY by L.E. Nouwens and C.J. Thomson, Central West Geographic Information Systems Group, Natural Resource Information, Department of Natural Resources and Water, Rockhampton.

Produced by the Central West Geographic Information Systems Group, Natural Resource Information, Department of Natural Resources and Water, Rockhampton.

Base map compiled from the Queensland Digital Cadastral Database April 2007, Department of Natural Resources and Water, Brisbane.

DISCLAIMER
While every care is taken to ensure the accuracy of this product, the Department of Natural Resources and Water makes no representations or warranties about its accuracy, reliability, completeness or suitability for any particular purpose and disclaims all responsibility and all liability (including without limitation, liability in negligence) for all expenses, losses, damages (including indirect or consequential damage) and costs which you might incur as a result of the product being inaccurate or incomplete in any way for any reason.

© The State of Queensland (Department of Natural Resources and Water) 2007.

Queensland Government
Natural Resources and Water
ACID SULFATE SOILS - BAJOOL - PORT ALMA AREA
NRW REF: CQA CWR_A1_0701602_01
EDITION 1: May 2007