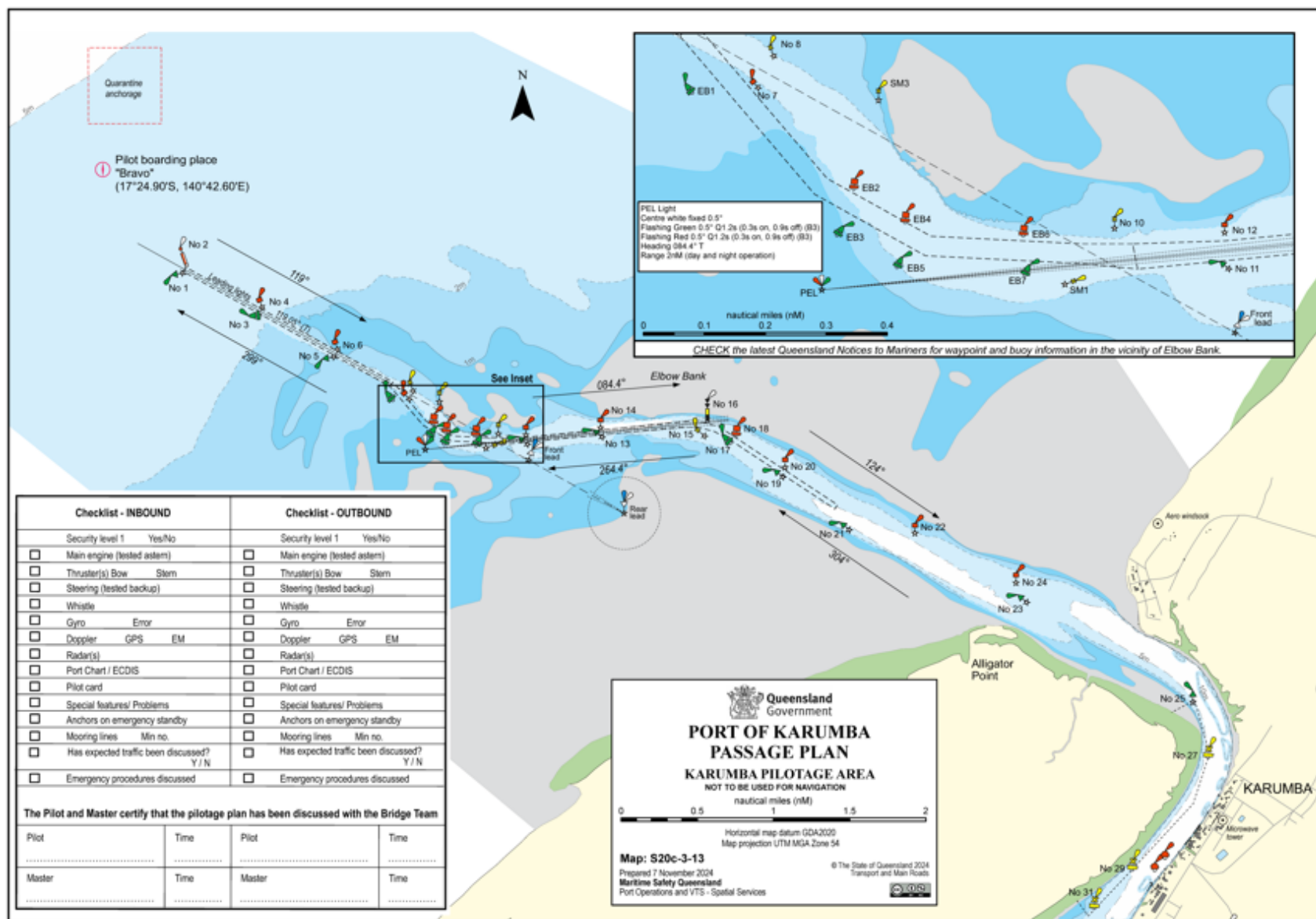


## 16. Appendices

<u>16.1</u>	<u>Port of Karumba Passage Plan</u>	66
<u>16.2</u>	<u>Port of Karumba Passage Plan Reverse</u>	67
<u>16.3</u>	<u>Port of Karumba</u>	68
<u>16.4</u>	<u>Pilot Boarding Ground</u>	69
<u>16.5</u>	<u>Karumba Berth Layout</u>	70
<u>16.6</u>	<u>Pilotage area</u>	71
<u>16.7</u>	<u>Port and pilotage areas</u>	72
<u>16.8</u>	<u>Permission to Immobilise Main Engines (at berth or anchor)</u>	73

# 16.1 Port of Karumba Passage Plan

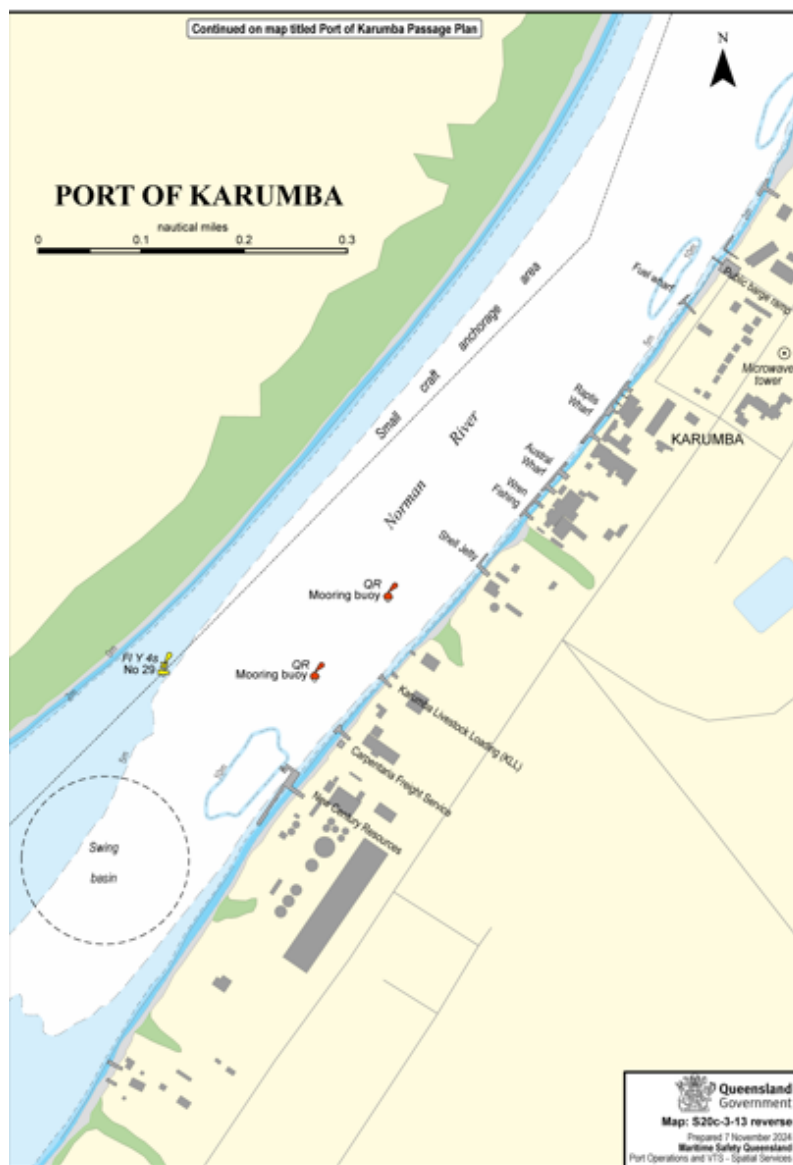
For a high resolution map please visit [Section 16.1 - Karumba Port Procedures and Information for Shipping - Karumba: Port Procedures and Information and Information for Shipping - Publications | Queensland Government](#)



Hard copies of this document are considered uncontrolled. Please refer to the Maritime Safety Queensland website for the latest version. Port Procedures and Information for Shipping – Port of Karumba, August 2024.

## 16.2 Port of Karumba Passage Plan Reverse

For a high resolution map please visit [Section 16.2 - Karumba Port Procedures and Information for Shipping - Karumba: Port Procedures and Information and Information for Shipping - Publications | Queensland Government](#)



### PORT OF KARUMBA

Vessel .....

#### PILOTAGE PLAN - ARRIVAL

Karumba Harbour listens continuously on VHF 16.  
Should any emergency arise, call Karumba Harbour for assistance.  
The bridge team will be required to plot vessel's position as required by Maritime Safety Queensland and International Regulations.  
The pilotage passage will be monitored by Karumba Harbour.

Pilot				Pilot card	yes	no
Date				Defects	yes	no
Passage				Bar	Harbour	
Channels (VHF)				LAT		
Berth				+ Tide		
Draft	in metres	F	A	Avl Water		
Tide	Time	Height		- Draft		
Tide	Time	Height		UKC		
Wind	DIR	SP		Minimum UKC		
Remarks:						

### PORT OF KARUMBA

Vessel .....

#### PILOTAGE PLAN - REMOVAL/DEPARTURE

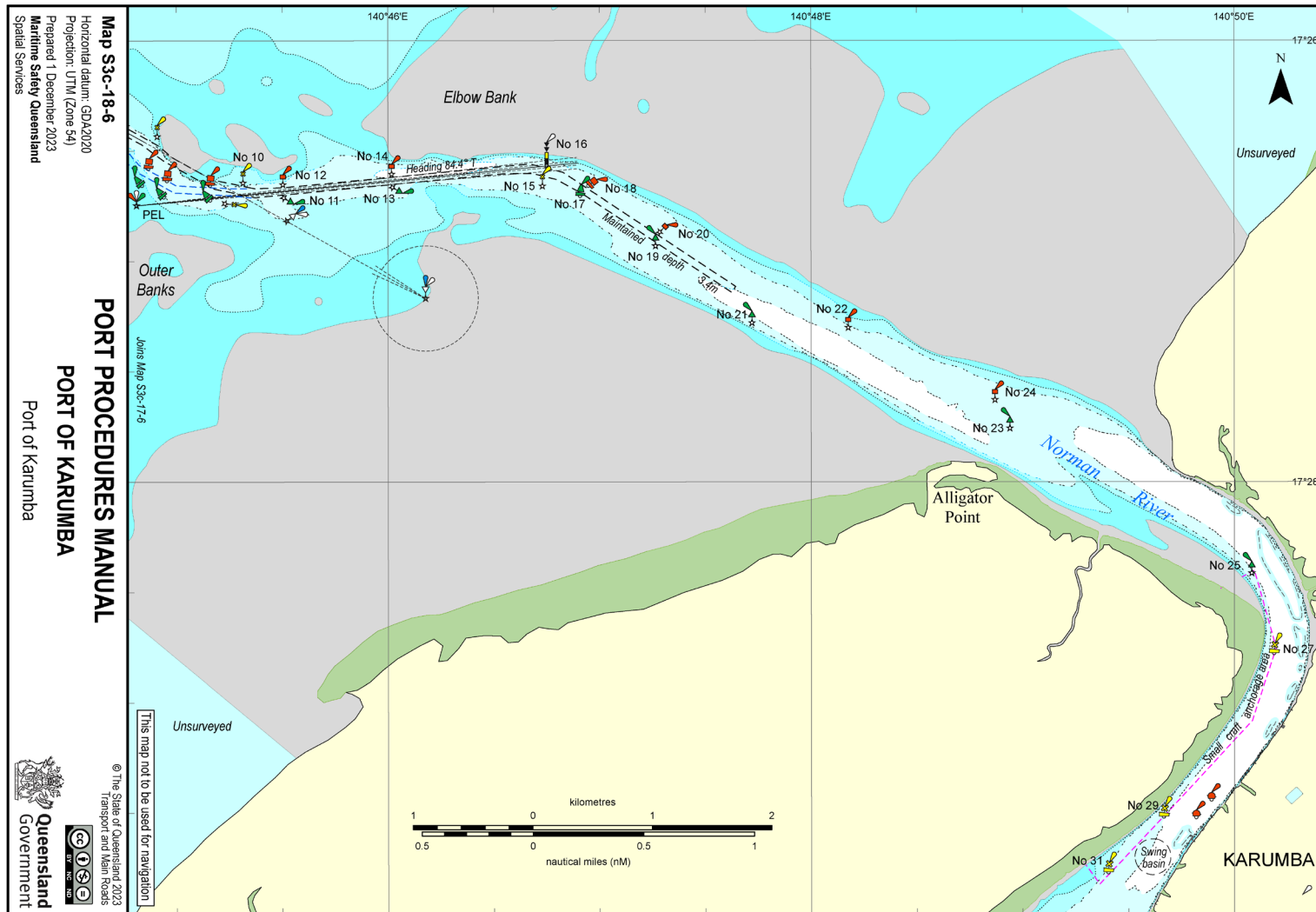
Karumba Harbour listens continuously on VHF 16.  
Should any emergency arise, call Karumba Harbour for assistance.  
The bridge team will be required to plot vessel's position as required by Maritime Safety Queensland and International Regulations.  
The pilotage passage will be monitored by Karumba Harbour.

Pilot				Pilot card	yes	no
Date				Defects	yes	no
Passage				Harbour	Bar	
Channels (VHF)				LAT		
Berth				+ Tide		
Draft	in metres	F	A	Avl Water		
Tide	Time	Height		- Draft		
Tide	Time	Height		UKC		
Wind	DIR	SP				
Remarks:						

Hard copies of this document are considered uncontrolled. Please refer to the Maritime Safety Queensland website for the latest version.  
Port Procedures and Information for Shipping – Port of Karumba, August 2024.

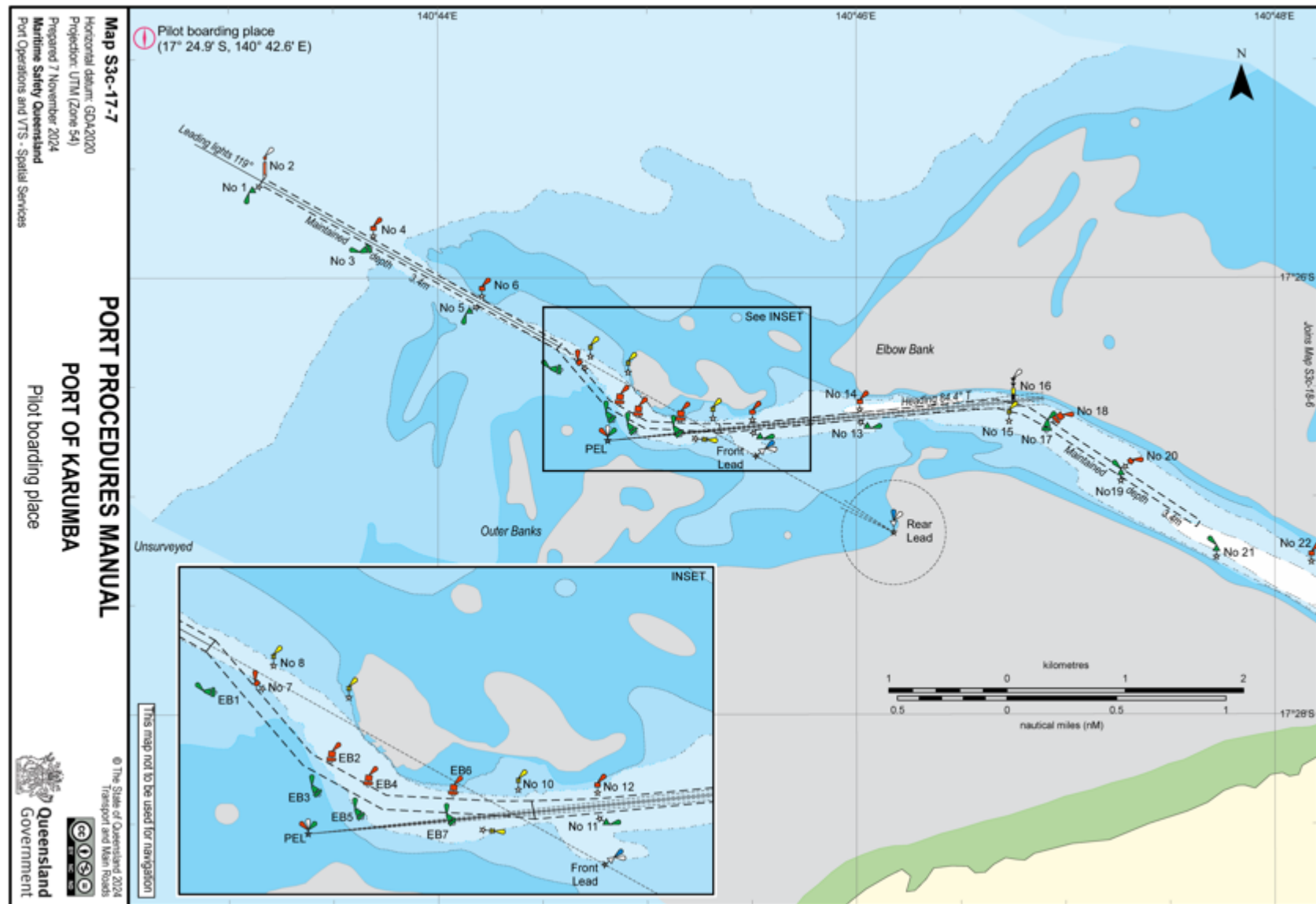
## 16.3 Port of Karumba

For a high resolution map please visit [Section 16.3 - Karumba Port Procedures and Information for Shipping - Karumba: Port Procedures and Information and Information for Shipping - Publications | Queensland Government](#)



## 16.4 Pilot Boarding Ground

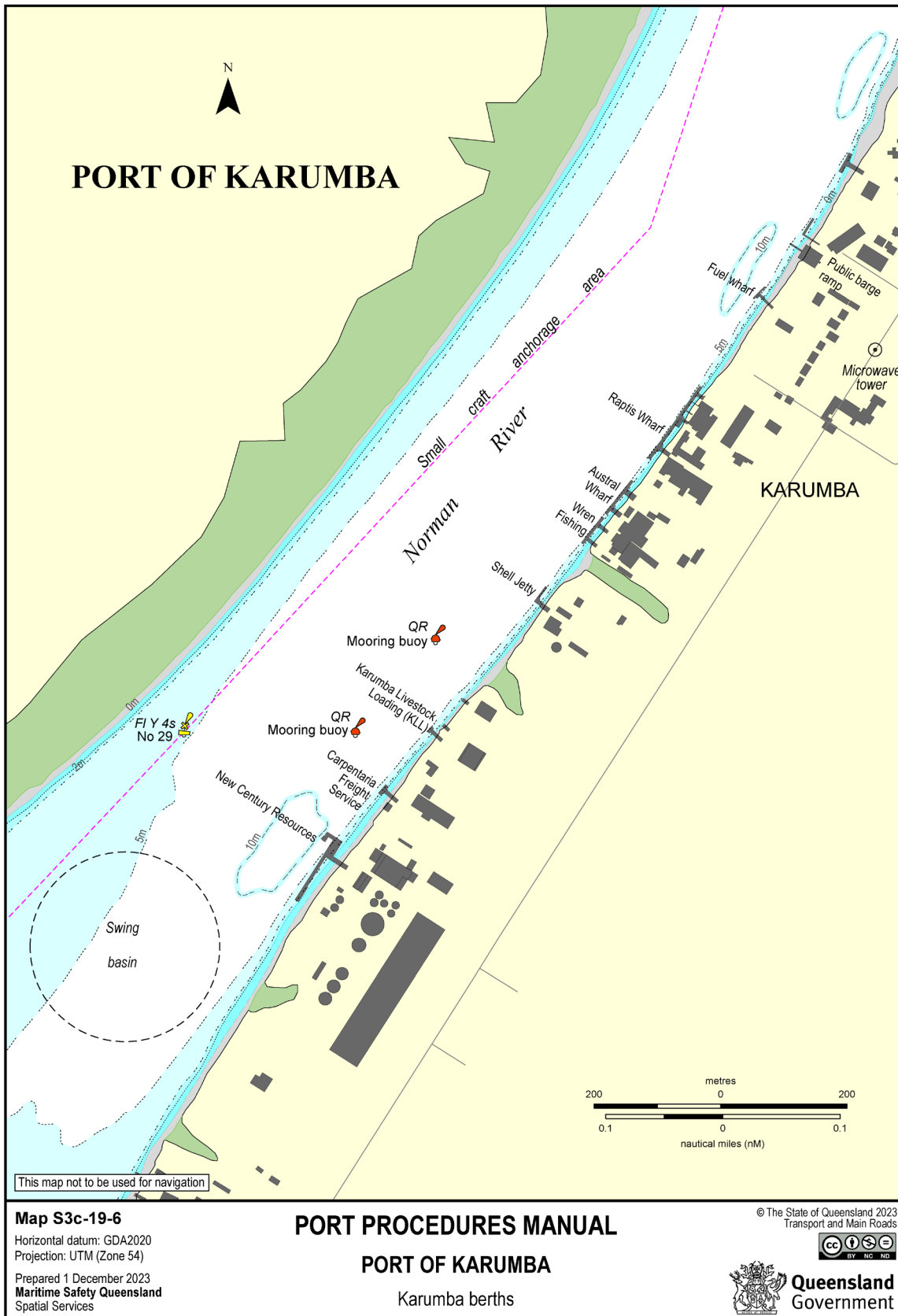
For a high resolution map please visit [Section 16.4 - Karumba Port Procedures and Information for Shipping - Karumba: Port Procedures and Information and Information for Shipping - Publications | Queensland Government](#)



Hard copies of this document are considered uncontrolled. Please refer to the Maritime Safety Queensland website for the latest version.  
Port Procedures and Information for Shipping – Port of Karumba, August 2024.

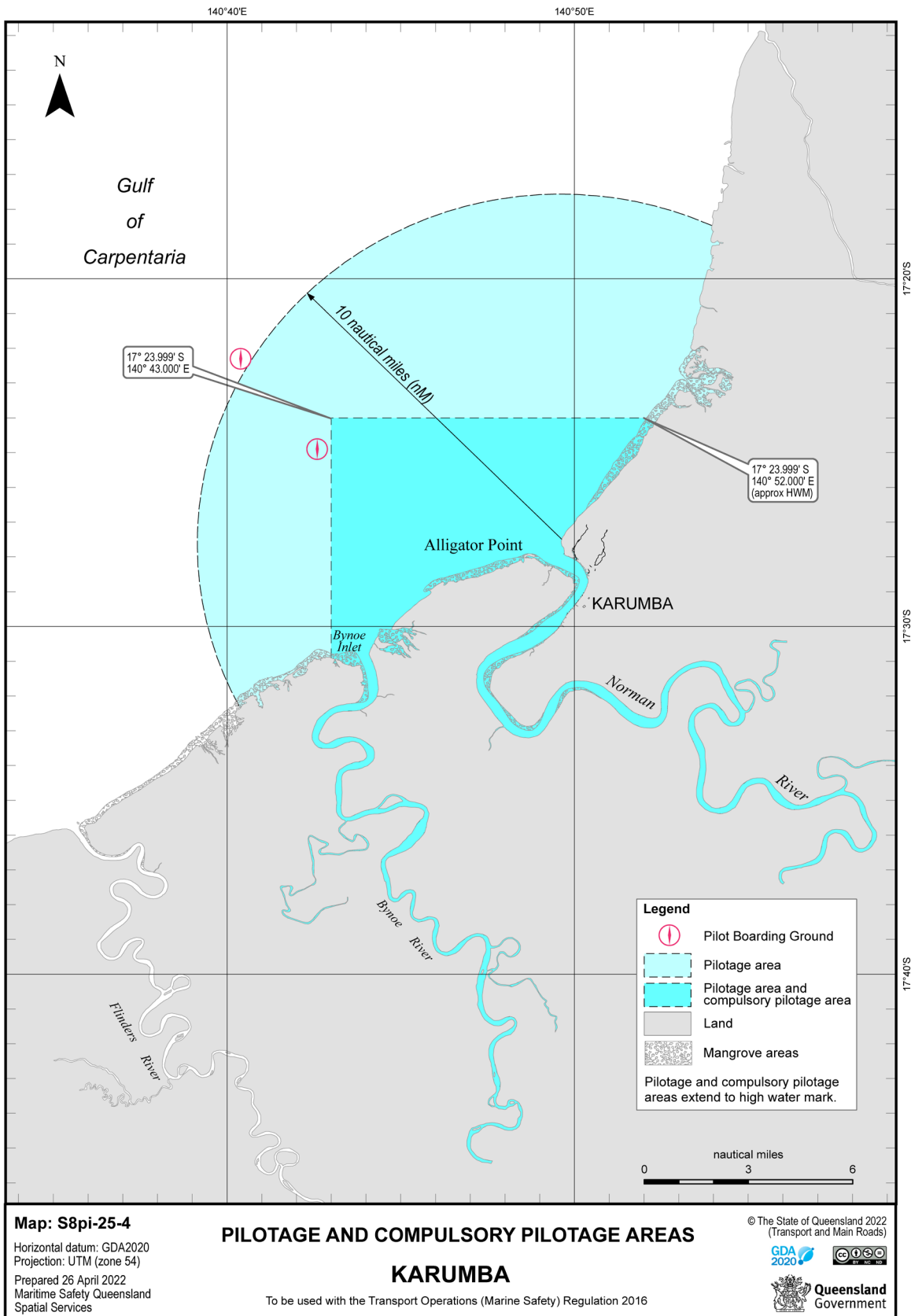
# 16.5 Karumba Berth Layout

For a high resolution map please visit [Section 16.5 - Karumba Port Procedures and Information for Shipping - Karumba: Port Procedures and Information for Shipping - Publications | Queensland Government](#)



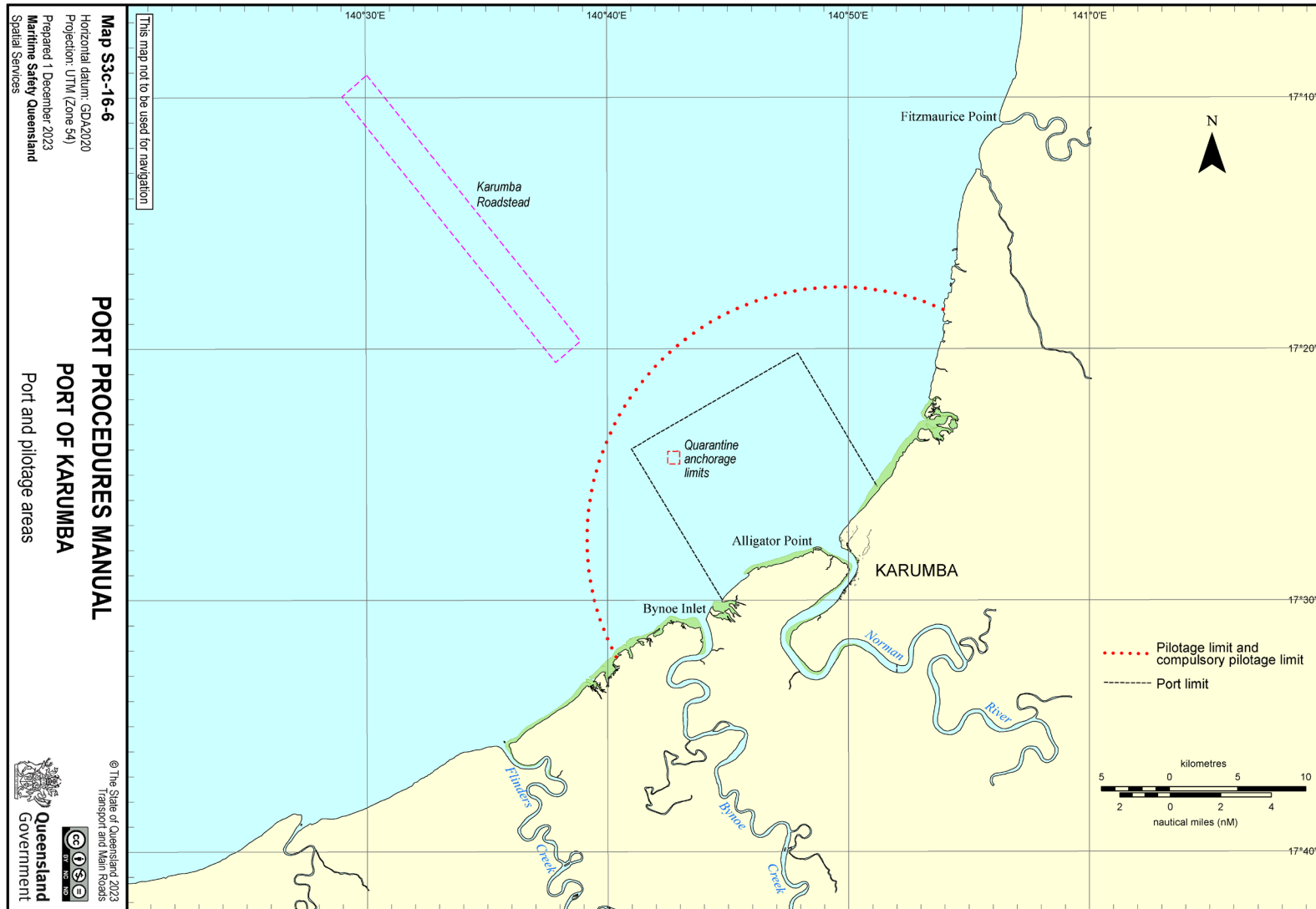
# 16.6 Pilotage area

For a high resolution map please visit [Section 16.6 - Karumba Port Procedures and Information for Shipping - Karumba: Port Procedures and Information and Information for Shipping - Publications | Queensland Government](#)



# 16.7 Port and pilotage areas

For a high resolution map please visit [Section 16.4 - Karumba Port Procedures and Information for Shipping - Karumba: Port Procedures and Information and Information for Shipping - Publications | Queensland Government](#)






## 16.8 Permission to Immobilise Main Engines (at berth or anchor)

Please follow this link to access the official fillable PDF form: [F5199 - Permission to Immobilise Main Engines - Cairns Region](#)

This is a replica of the form and is not intended to be used.

**(THIS FORM IS ONLY TO BE USED IF THE REQUEST CANNOT BE SUBMITTED BY THE AGENT WITHIN QSHIPS)**

 **Queensland Government**

### Permission to Immobilise Main Engines - Cairns Region

Before operations are carried out this form should be filled out by ship's agents/masters and forwarded to the Regional Harbour Master for approval on:  
Fax: 07 4052 7460 or  
Email: [vtsc Cairns@msq.qld.gov.au](mailto:vtsc Cairns@msq.qld.gov.au)

**Location:** Cairns  Karumba  Thursday Island  Mourilyan   
Cairns anchorage  Karumba anchorage  Thursday Island anchorage  Mourilyan anchorage   
Weipa  Amrun  Cape Flattery  Skardon River   
Weipa anchorage  Amrun anchorage  Other

Vessel name  Agent

**Permission is sought to immobilise main engines - master to complete noting the conditions below:**  
From  hrs  /  /  To  hrs  /  /

Scope of repairs (if appropriate)

Time required to mobilise in emergency situation

**Subject to the following conditions:**

1. Prior to immobilising, advise VTS on port working channel.
2. For vessels alongside moorings, to be tended throughout.
3. For vessels at anchorage, anchored position to be monitored at all times.
4. During daylight hours, fly signal flags 'R' over 'Y'.
5. On completion, advise VTS on port working channel.

For vessels at anchor, this permission is only valid whilst weather conditions are suitable.  
Masters are requested not to conduct prolonged engine trials whilst berthed at Cairns Port Authority wharves.

Approved/Not approved  Date  /  /

**Privacy Statement:** The Department of Transport and Main Roads is collecting the information on this form under the provisions of the Transport Operations (Marine Safety) Act 1994. The department may disclose this information to authorised departmental officers and officers of Queensland port authorities. Your personal information will not be disclosed to a third party without your consent unless required or authorised to do so by law.

TRB Forms Area Form F5199 CFD V01 Feb 2019