

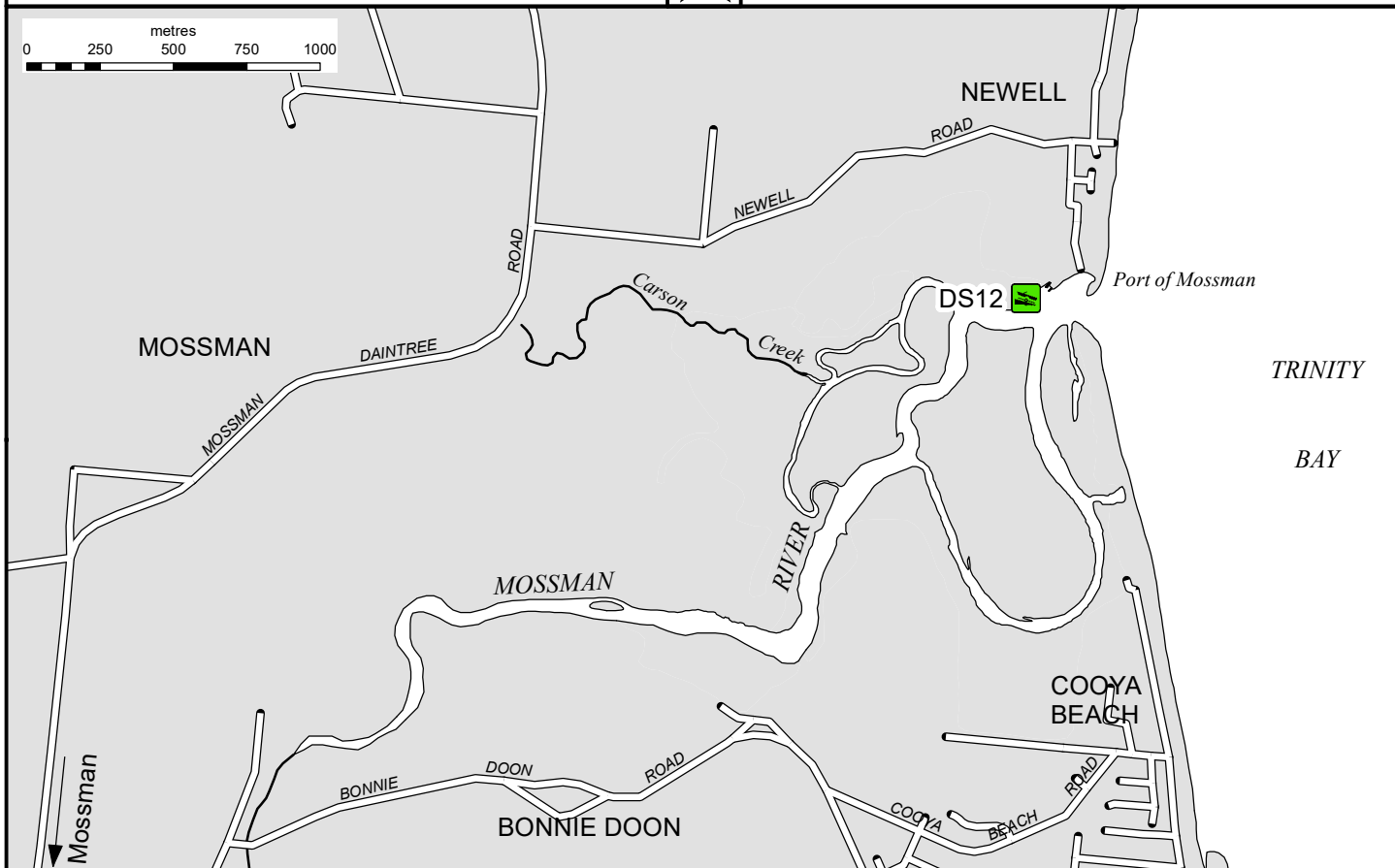


Public boat ramp

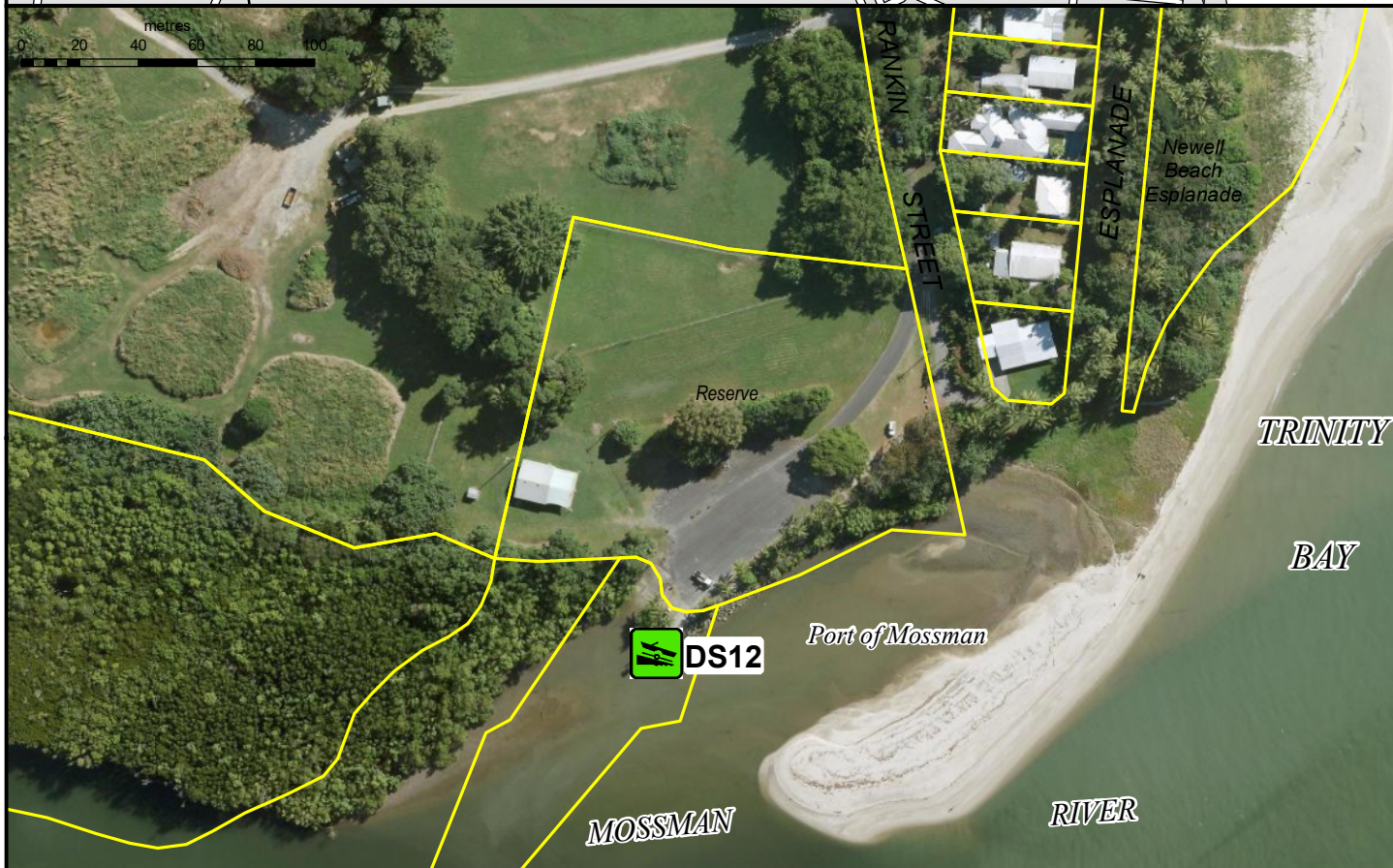


NEWELL
(Rankin Street)

0 250 500 750 1000 metres



0 20 40 60 80 100 metres



© The State of Queensland
(Transport and Main Roads) 2021



Managing Authority

Facility code

**Douglas Shire
Council**

DS12



Prepared 21 October 2021
Maritime Safety Queensland

L-5-45-2B