

# LAND SUITABILITY FOR SORGHUM, MAIZE AND SUNFLOWERS

ALBERT RIVER  
CHARDONS BRIDGE - BOYLANDS AREA

Compiled by D T Malcolm, J K Loi and J V Armbruster August 1995  
Map Projection Universal Transverse Mercator Zone 56

SCALE 1 : 50 000



## REFERENCE

- Class 2 Suitable land with minor limitations
- Class 3 Suitable land with moderate limitations
- Class 4 Marginal land - presently unsuitable
- Class 5 Unsuitable land
- Stream Channels
- Swamps
- Study boundary
- Shire boundary
- Creek Reserves
- Cadastral boundaries



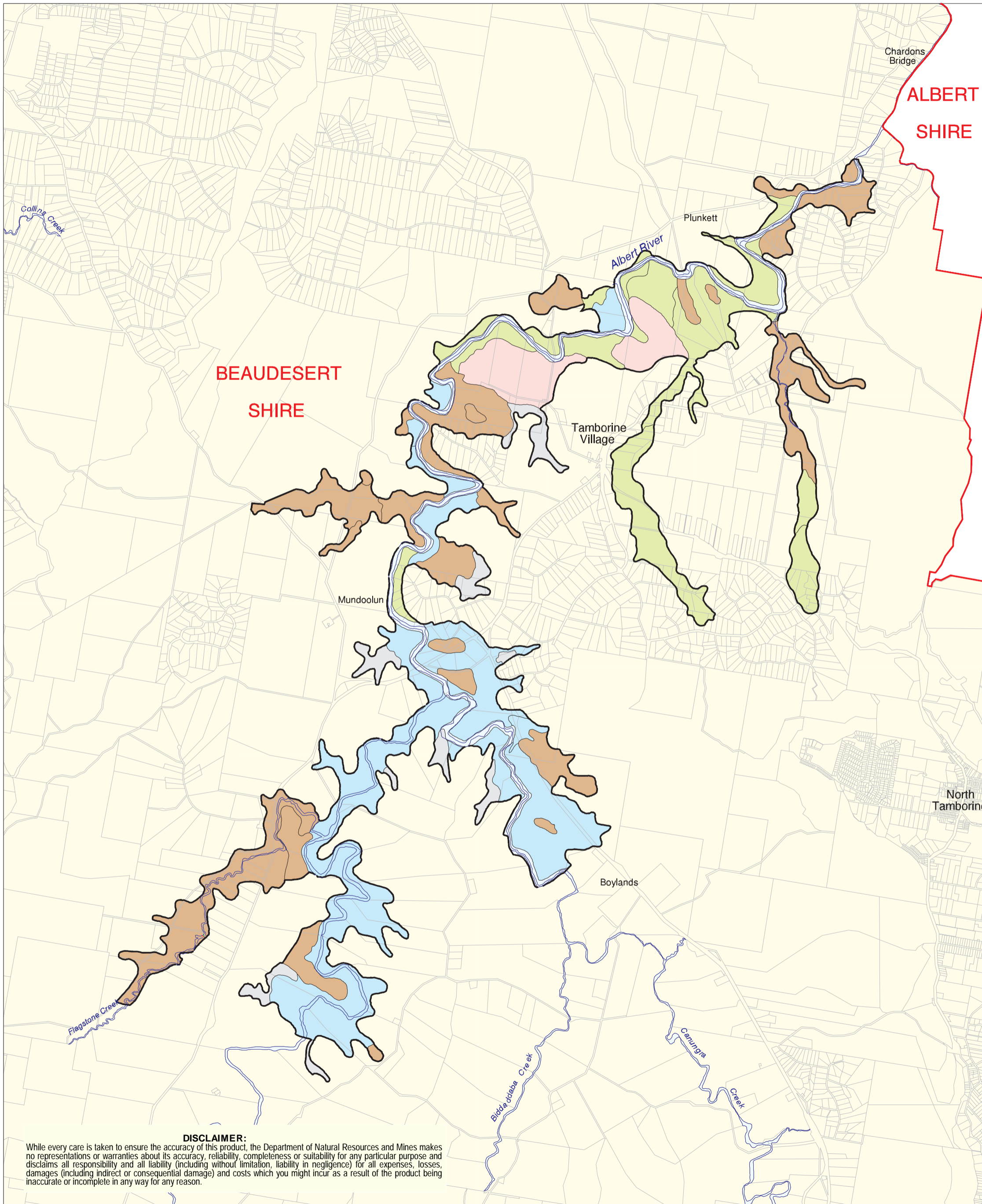
## INTENSITY STATEMENT:

This assessment uses the results of a medium intensity soils survey. The soil survey was based on aerial photograph interpretation and ground observations of the order of one observation to an area of 33 hectares.

## NOTES:

Land is classified on the basis of a specified land use which allows optimum production with minimal degradation to the land resource in the long term. Current technology and management are assumed and the land was assessed as it was found at the time of the survey.

It is assumed that potential irrigation is available for alluvial soils.



## DISCLAIMER:

While every care is taken to ensure the accuracy of this product, the Department of Natural Resources and Mines makes no representations or warranties about its accuracy, reliability, completeness or suitability for any particular purpose and disclaims all responsibility and all liability (including without limitation, liability in negligence) for all expenses, losses, damages (including indirect or consequential damage) and costs which you might incur as a result of the product being inaccurate or incomplete in any way for any reason.